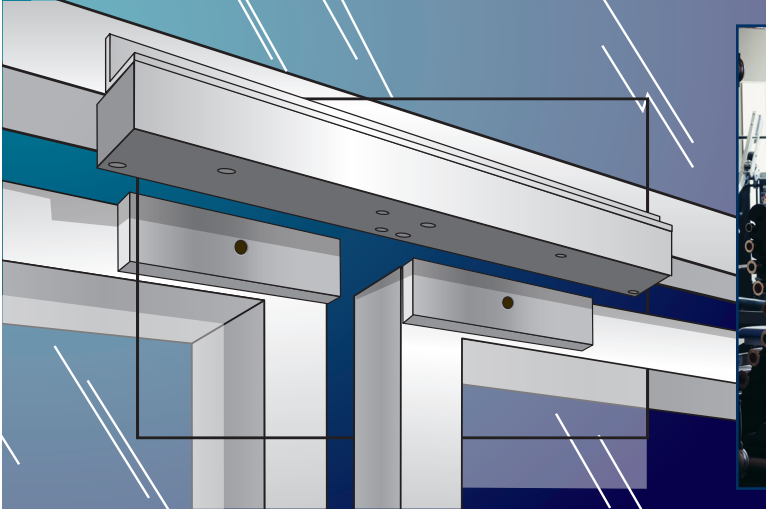


# 24 Hour Facility Access

Convenient and Monitored 24 Hour Visitor Access

- Fitness Facilities • Campus Centers
- Mail Rooms • Laundry Rooms



**PREVENT DOOR PROPPING, TAILGATING, AND KEEP SECURE DOORS LOCKED-** with the EA Series Door Prop Alarm

## 1 1512V Electromagnetic Door Lock

- Double Housing- Pair of Doors
- Holding Force- 1650 lbs.
- UL Listed, 12/24 VDC
- Clear Anodized Aluminum
- Optional Monitoring



1512V

## 2 423U "PUSH TO EXIT" Switch

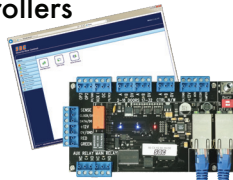
- 2" Square Button
- "PUSH TO EXIT" with Integrated Timer
- Adjustable 1-60 Seconds
- 12/24VDC, 2A DPDT Contact
- 1-Gang, 20 Gauge Faceplate



423U

## 3 IP-based Single Door Access Controllers

- Expandable Up to 100 Doors
- Manage from any PC/Web Browser
- Enterprise Door Security Without Network Vulnerability
- IT-Friendly, PoE Flexibility- create a customized Access System Solution



IPDCE

## 4 EntryCheck™ 920PW

- 26 Bit, Wiegand Output
- LED Status
- Weather and Vandal Resistant
- Backlit Keys



920PW  
With Prox Reader

## 5 MD31D Request-to-Exit PIR Motion Detector

- 1-60 Sec. Adjustable Timer
- White or Black
- Field Selectable, Failsafe or Failsecure
- Frame Header, Wall or Ceiling Mounted



MD-31DOW

## 6 EA Series Door Prop Alarm

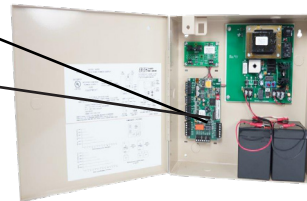
- Double Gang with Integral Status LED
- Key Reset/Bypass Switch
- Configurable Volume Control
- Audible Alarm 85dB, Automatic or Manual Reset with Keyswitch



EA-708

## 7 632RF Power Supply/Charger

- 12/24VDC, 2 Amp
- Emergency Release
- 12" x 12" Cabinet
- UL, Class 2



RB12V4-2  
Optional Backup Batteries  
12V/5Ah



602RF x IPDCE x 12VR

## 8 Concealed Switch 15-2



- Counter Mount
- SPDT, Momentary

## WRC Transmitter & Receiver



WRC-R2

WRC-2B

- Wireless Fob Transmitter
- Two Buttons
- Two Channel Receiver



The lock behind your system