

# HANDS FREE DOOR SOLUTIONS™

NO  
TOUCH



Touchless Door Applications

*the lock behind the system*

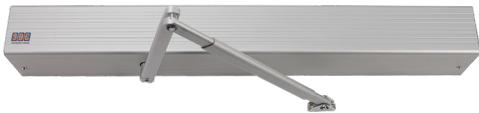


# NEVER TOUCH A DOOR AGAIN

SDC's Hands Free Door Solution™ meets the need for health, fire & life safety or ADA compliance. No need to ever touch a door again on the way in or out of a facility, office or bathroom. A wave of the hand in front of the 474 touchless switch activates the Auto EntryControl™ low energy, swing door operator for entry or egress.



## 1 AUTO ENTRYCONTROL™ Low Energy Swing Door Operator



Imagine offering a hands-free hygiene system by simply pairing touchless switches with the Auto EntryControl™ low energy, swing door operator.

## 2 474 TOUCHLESS SWITCH No Touch Wave-To-Open Switch



By placing a touchless exit switch on the inside and outside of the doorway, the door operator can be activated by the wave of a hand for access and egress while still meeting fire & life safety requirements.



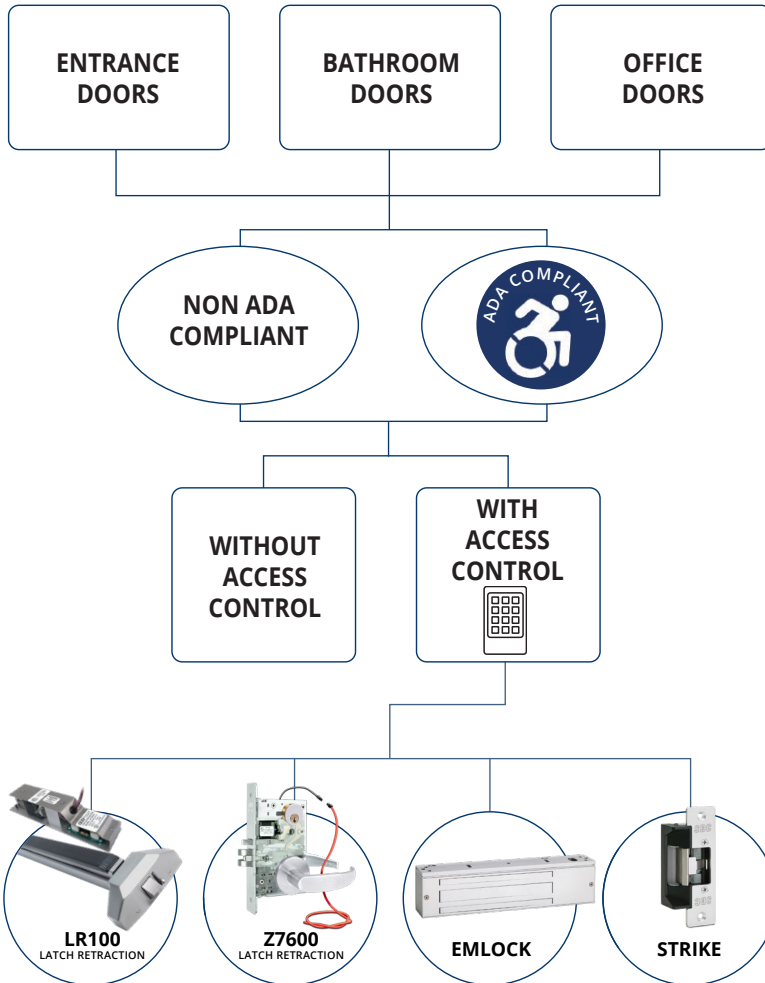
## TOUCHLESS TECHNOLOGY AND CONTAMINATION CONTROL

SDC's Hands Free Door Solutions™ use touchless technology to minimize the spread of infection or contaminants so that no one ever has to touch a door again. They're ideal for retrofitting a business facility or campus to help meet government guidance and requirements as recommended by OSHA, CDC, state, county, local and other agencies.

These solutions are also great for hospitals, labs, cleanrooms, food processors, schools, public venues and other facilities worldwide where contamination control is required.

# BUILD YOUR OWN HANDS FREE DOOR SOLUTION™

Use AutoEntryControl™ and Wave-To-Open switches to create your own touchless, hands free door solution with or without access control for flexible solution applications to meet fire & life safety or ADA compliance.\*



- 1 Qualify high touch, high traffic doors
- 2 Confirm if the door opening needs to meet requirements for ADA compliance
- 3 If the door opening does not require access and egress control, simply order:  
 (1) Auto EntryControl™  
 (2) 474 Touchless Switches
- 4 If access and egress control is required, identify the type of locking hardware needed for your door application before ordering

## NO NEED FOR A SEPARATE POWER SUPPLY!

Auto EntryControl™ comes with its own 1Amp + Power Output and Sequencer

[www.sdcsecurity.com/handsfree](http://www.sdcsecurity.com/handsfree)

\* Even with national ANSI and ADA standards, building code enforcement relating to automatic doors and switch placement varies across the country. Consult your local Authority Having Jurisdiction (AHJ) for compliance requirements.

# TOUCHLESS DOOR APPLICATIONS

Our Hands Free Door Solution™ is a simple, straightforward and common-sense answer to meeting the need for health and safety in single and double-door applications across a variety of door types – for bathrooms, offices, storefronts, meeting rooms and more.

Regardless of the need, building your own Hands Free Door Solution™ provides many benefits:

- Hands Free Convenience
- Hands Free Code Compliance
- Hands Free Hygiene and Contamination Control
- Reduced Liability
- Customer and Employee Safety
- Easy to Install



# NEED HELP BUILDING YOUR SOLUTION?

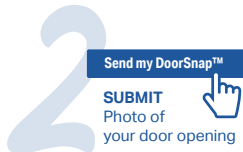
Use DoorSnap™ and the free SDC App for your touchless, hands free door projects.



Ask for a "Hands Free Solution" when submitting



OPEN SDC App



Download the FREE SDCSecurity App now!

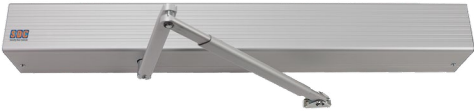
SDC has added a new, labor-saving SOLUTION FUNCTION to our award winning SDCSecurity App. SDC will recommend a cost effective solution with product information links to retrofit the opening for access & egress control locking hardware.



# Hands Free Door Solution™

## ADA Compliant Latch Retraction Exit Device Application

### 1 AUTOS1 Low Energy Swing Door Operator



- Easy, One-Man Installation
- Single Button, Self-Tuning Setup
- Built-in 1 Amp Power Supply
- On-board Lock Sequencing
- Hold Open Feature

### 2 474 Touchless Switch



- WAVE-TO-OPEN
- IR Sensing Technology
- Wave Activation Up to 5"
- Illuminated Dual LED Sensor (RED/GREEN)

### 3 480 ADA Actuators



- PUSH-TO-OPEN Plates
- Single or Double Gang
- Round and Narrow Options
- Recessed, Surface and Bollard Mounting

### 4 920P Access Control Keypad



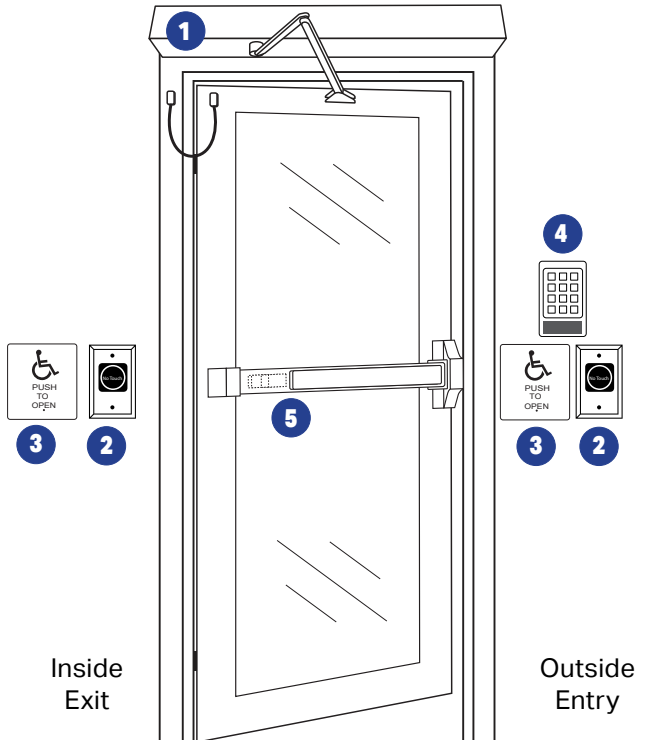
- Built-in Prox Reader
- Indoor/Outdoor Use
- Surface or Single Gang Mount
- Heavy Cast Vandal Resistant Housing

### 5 LR100 ELR Retrofit Kit



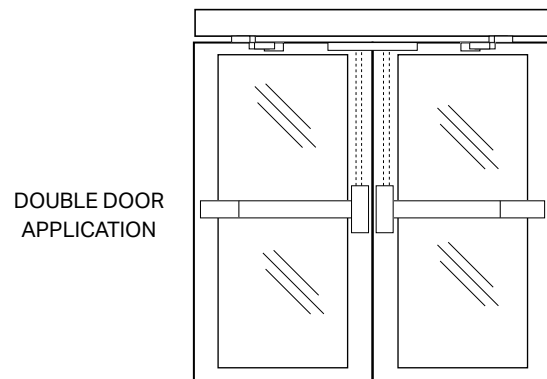
- Motorized Latch Retraction and Dogging
- Eliminates Costly Replacement of Existing Device
- Available for over 30 Major Brands

*Requires Power Transfer Device such as our PT-3*



### The Hands Free Door Solution™ Provides:

- Hands Free Convenience
- Hands Free Code Compliance
- Hands Free Hygiene and Contamination Control

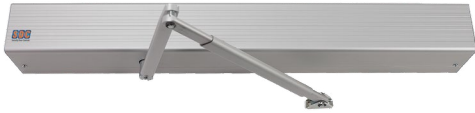




# Hands Free Door Solution™

## ADA Compliant Latch Retraction Mortise Lockset Application

### 1 AUTOS1 Low Energy Swing Door Operator



- Easy, One-Man Installation
- Single Button, Self-Tuning Setup
- Built-in 1 Amp Power Supply
- On-board Lock Sequencing
- Hold Open Feature

### 2 474 Touchless Switch



- WAVE-TO-OPEN
- IR Sensing Technology
- Wave Activation Up to 5"
- Illuminated Dual LED Sensor (RED/GREEN)

### 3 480 ADA Actuators



- PUSH-TO-OPEN Plates
- Single or Double Gang
- Round and Narrow Options
- Recessed, Surface and Bollard Mounting

### 4 923P Access Control Keypad



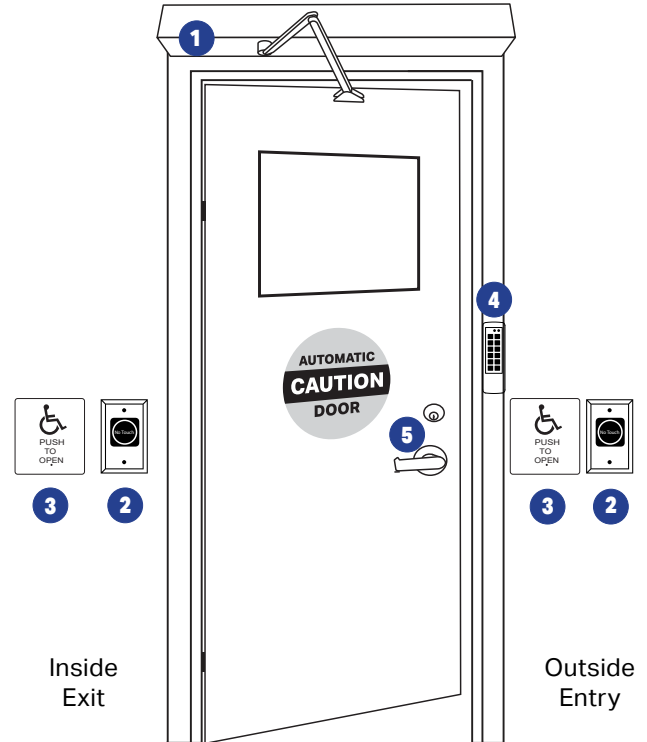
- Built-in Prox Reader
- Narrow, Indoor/Outdoor Use
- Surface, Mullion or Single Gang Mount
- Heavy Cast Vandal Resistant Housing

### 5 Z7600 Electrified Mortise Lockset



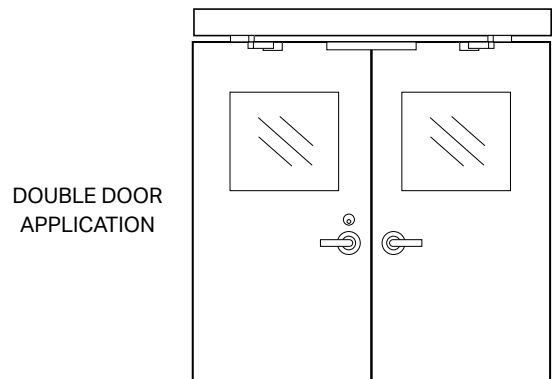
Requires Power Transfer Device such as our PTH-4

- Motorized Latch Retraction and Dogging
- 620mA Inrush, 160mA Continuous @24VDC
- New Construction or Retrofit
- Field Selectable Handing
- Order With or Without Trim
- Full Monitoring Capability
- Key Cylinder Latch Retraction



#### The Hands Free Door Solution™ Provides:

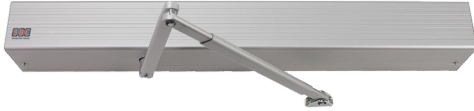
- Hands Free Convenience
- Hands Free Code Compliance
- Hands Free Hygiene and Contamination Control



# Hands Free Door Solution™

## ADA Compliant Magnetic Lock Application

### 1 AUTOS1 Low Energy Swing Door Operator



- Easy, One-Man Installation
- Single Button, Self-Tuning Setup
- Built-in 1 Amp Power Supply
- On-board Lock Sequencing
- Hold Open Feature

### 2 474 Touchless Switch



- WAVE-TO-OPEN
- IR Sensing Technology
- Wave Activation Up to 5"
- Illuminated Dual LED Sensor (RED/GREEN)

### 3 480 ADA Actuators



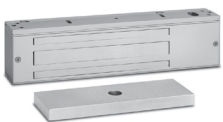
- PUSH-TO-OPEN Plates
- Single or Double Gang
- Round and Narrow Options
- Recessed, Surface and Bollard Mounting

### 4 920P Access Control Keypad

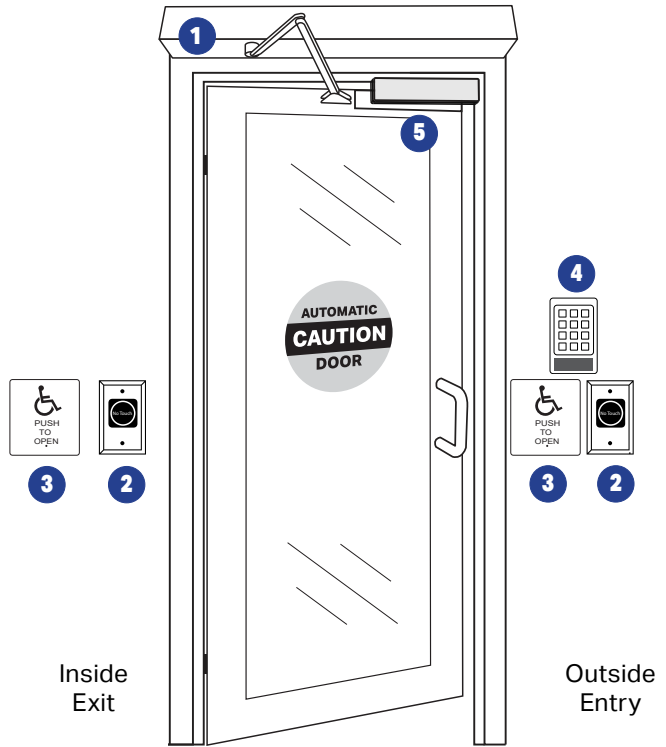


- Built-in Prox Reader
- Narrow, Indoor/Outdoor Use
- Surface, Mullion or Single Gang Mount
- Heavy Cast Vandal Resistant Housing

### 5 1511 Magnetic Lock



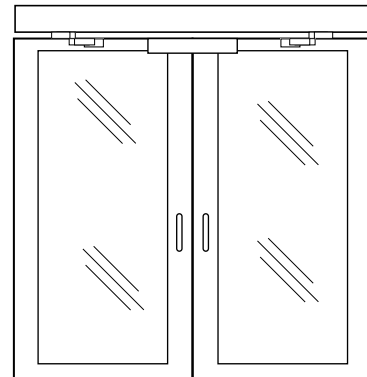
- Single Door
- 1650 lb Holding Force
- UL Listed 12/24 VDC
- Clear Anodized Aluminum
- Optional Monitoring



### The Hands Free Door Solution™ Provides:

- Hands Free Convenience
- Hands Free Code Compliance
- Hands Free Hygiene and Contamination Control

DOUBLE DOOR APPLICATION

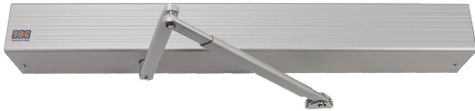




# Hands Free Door Solution™

## ADA Compliant Electric Strike Application

### 1 AUTOS1 Low Energy Swing Door Operator



- Easy, One-Man Installation
- Single Button, Self-Tuning Setup
- Built-in 1 Amp Power Supply
- On-board Lock Sequencing
- Hold Open Feature

### 2 474 Touchless Switch



- WAVE-TO-OPEN
- IR Sensing Technology
- Wave Activation Up to 5"
- Illuminated Dual LED Sensor (RED/GREEN)

### 3 480 ADA Actuators



- PUSH-TO-OPEN Plates
- Single or Double Gang
- Round and Narrow Options
- Recessed, Surface and Bollard Mounting

### 4 923P Access Control Keypad

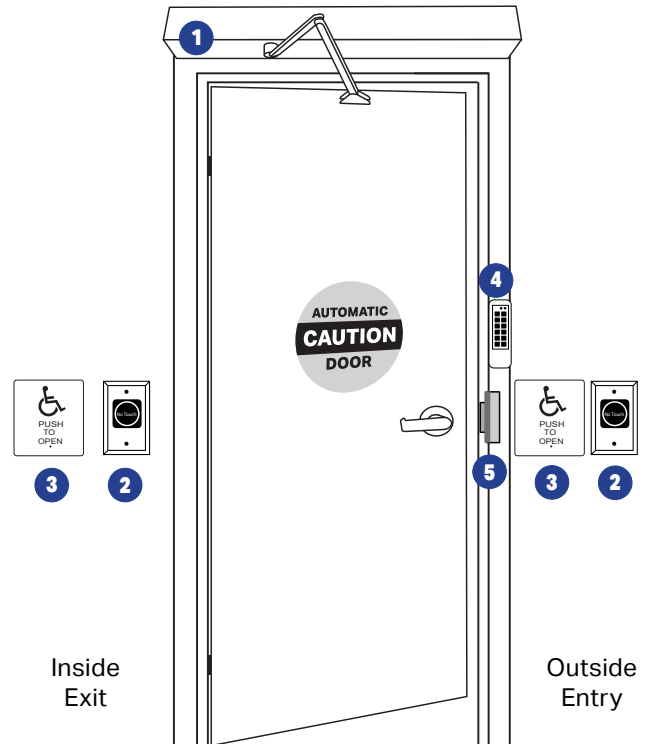


- Built-in Prox Reader
- Narrow, Indoor/Outdoor Use
- Surface, Mullion or Single-Gang Mount
- Heavy Cast Vandal Resistant Housing

### 5 45-4SU Electric Strike

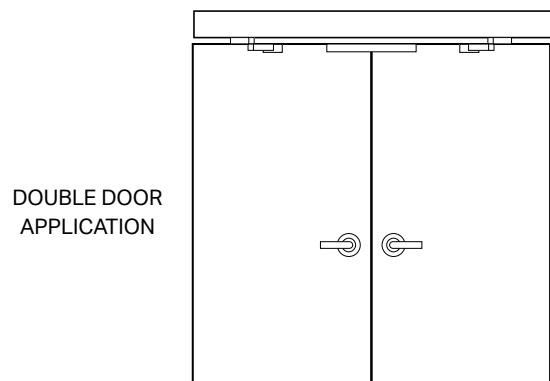


- For 5/8" or 3/4" Latch with 1/8" Door Gap
- Latch Position and Keeper Closed Status
- Field Selectable Failsecure/Failsafe
- Field Selectable Voltage
- Low Profile, 13/16"



### The Hands Free Door Solution™ Provides:

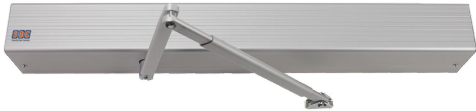
- Hands Free Convenience
- Hands Free Code Compliance
- Hands Free Hygiene and Contamination Control



# Hands Free Door Solution™

## ADA Compliant Electrified Storefront Exit Device Application

### 1 AUTOS1 Low Energy Swing Door Operator



- Easy, One-Man Installation
- Single Button, Self-Tuning Setup
- Built-in 1 Amp Power Supply
- On-board Lock Sequencing
- Hold Open Feature

### 2 474 Touchless Switch



- WAVE-TO-OPEN
- IR Sensing Technology
- Wave Activation Up to 5"
- Illuminated Dual LED Sensor (RED/GREEN)

### 3 480 ADA Actuators



- PUSH-TO-OPEN Plates
- Single or Double Gang
- Round and Narrow Options
- Recessed, Surface and Bollard Mounting

### 4 920P Access Control Keypad



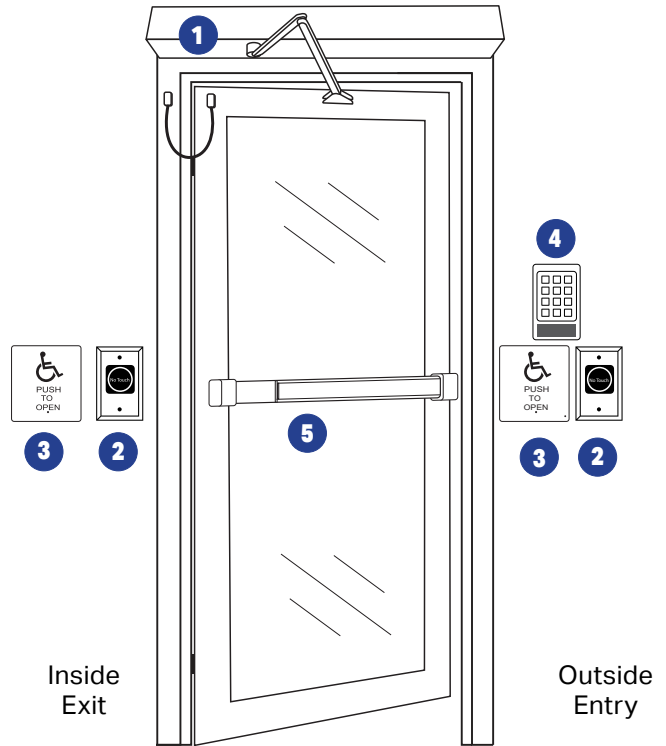
- Built-in Prox Reader
- Narrow, Indoor/Outdoor Use
- Surface, Mullion or Single-Gang Mount
- Heavy Cast Vandal Resistant Housing

### 5 S5000 Electrified Exit Device



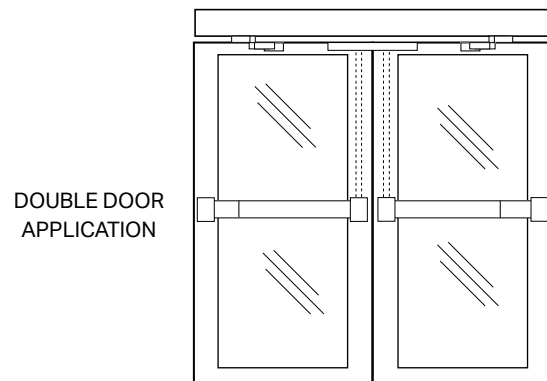
- Motorized Electric Latch Retraction and Dogging
- Request-To-Exit REX Monitoring Optional
- Aluminum Glass Door Applications

Requires Power Transfer Device Such as our PT-3



### The Hands Free Door Solution™ Provides:

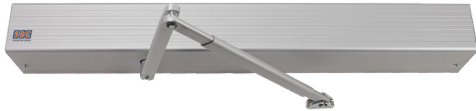
- Hands Free Convenience
- Hands Free Code Compliance
- Hands Free Hygiene and Contamination Control



# Hands Free Door Solution™

## ADA Compliant Electrified Exit Device Application

### 1 AUTOS1 Low Energy Swing Door Operator



- Easy, One-Man Installation
- Single Button, Self-Tuning Setup
- Built-in 1 Amp Power Supply
- On-board Lock Sequencing
- Hold Open Feature

### 2 474 Touchless Switch



- WAVE-TO-OPEN
- IR Sensing Technology
- Wave Activation Up to 5"
- Illuminated Dual LED Sensor (RED/GREEN)

### 3 480 ADA Actuators



- PUSH-TO-OPEN Plates
- Single or Double Gang
- Round and Narrow Options
- Recessed, Surface and Bollard Mounting

### 4 920P Access Control Keypad



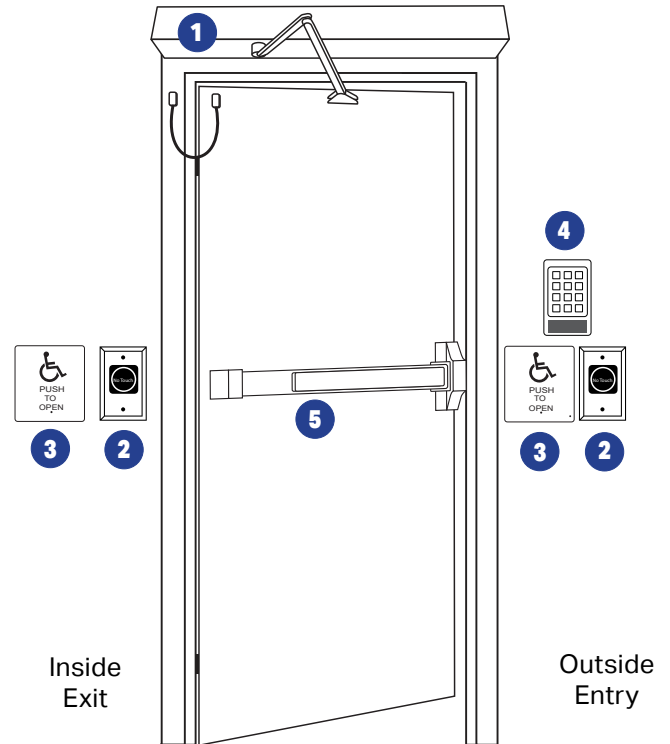
- Built-in Prox Reader
- Narrow, Indoor/Outdoor Use
- Surface, Mullion or Single-Gang Mount
- Heavy Cast Vandal Resistant Housing

### 5 S4000 Electrified Exit Device



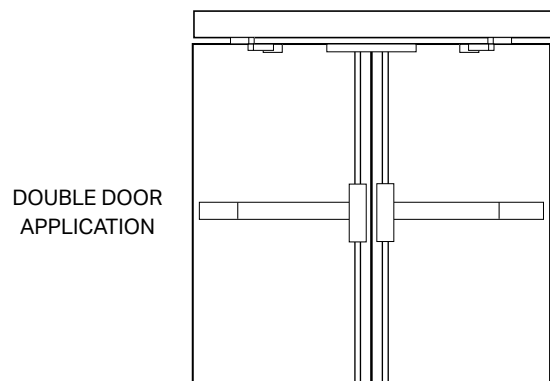
- Pre-Installed Electric Latch Retraction
- Stainless Steel Construction – Corrosion Resistant
- Grade 1 Exit Device for Durability
- Hollow Metal, Wood and Mineral Core Door Applications

*Requires Power Transfer Device such as our PT-3*



#### The Hands Free Door Solution™ Provides:

- Hands Free Convenience
- Hands Free Code Compliance
- Hands Free Hygiene and Contamination Control



# Check Out **SDC Online** For All Your Project Needs

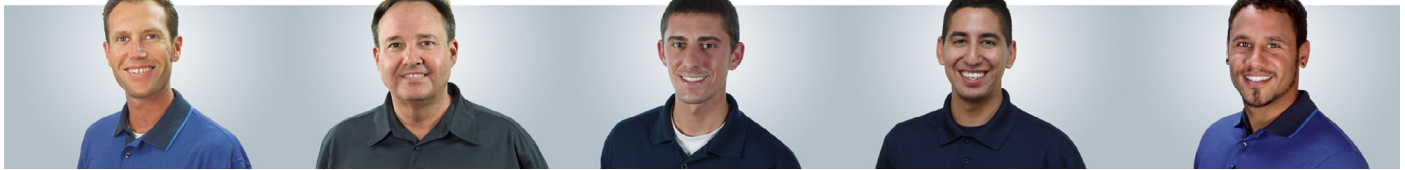
Our fully featured website has all the information, solutions and tools you'll need, including:

- Data Sheets
- Installation Instructions
- Videos
- Priceshets
- Comparison Charts
- Document Library
- Solution Flyers
- UL Listings
- Image Library
- Cool Tools
- 3 Part Specs
- And More!

[www.sdcsecurity.com](http://www.sdcsecurity.com)



# We're Here To Help



**Kelly Boyce**  
Tech Support

**Michael Lawrence**  
Tech Support

**Taylor Chmelsky**  
Customer Support

**Andrew Moyer**  
Customer Support

**Hunter VanHulzen**  
Sales Facilitator

Our fully staffed customer service department, technicians and engineers are available to assist with your design, discuss an application and coordinate all phases of your order.

- Product, Application and Installation Assistance
- Ordering Assistance
- Price and Delivery Quotation
- Purchase Order Status

## Customer Support Hours:

Monday – Friday, Pacific Standard Time	
Technical Support	6:30am – 4:30pm
Return Authorizations	8:00am – 4:30pm
Sales	8:00am – 4:30pm
Invoices	8:00am – 4:30pm

## Contact us by Mail:

Factory Mailing Address  
P.O. Box 3670 Camarillo, CA 93011-3670, USA

Factory Shipping Address  
801 Avenida Acaso, Camarillo, CA 93012, USA

## Contact us by Phone:

(805) 494-0622  
(800) 413-8783                      USA Toll Free

## Contact us by Email:

[service@sdsecurity.com](mailto:service@sdsecurity.com)

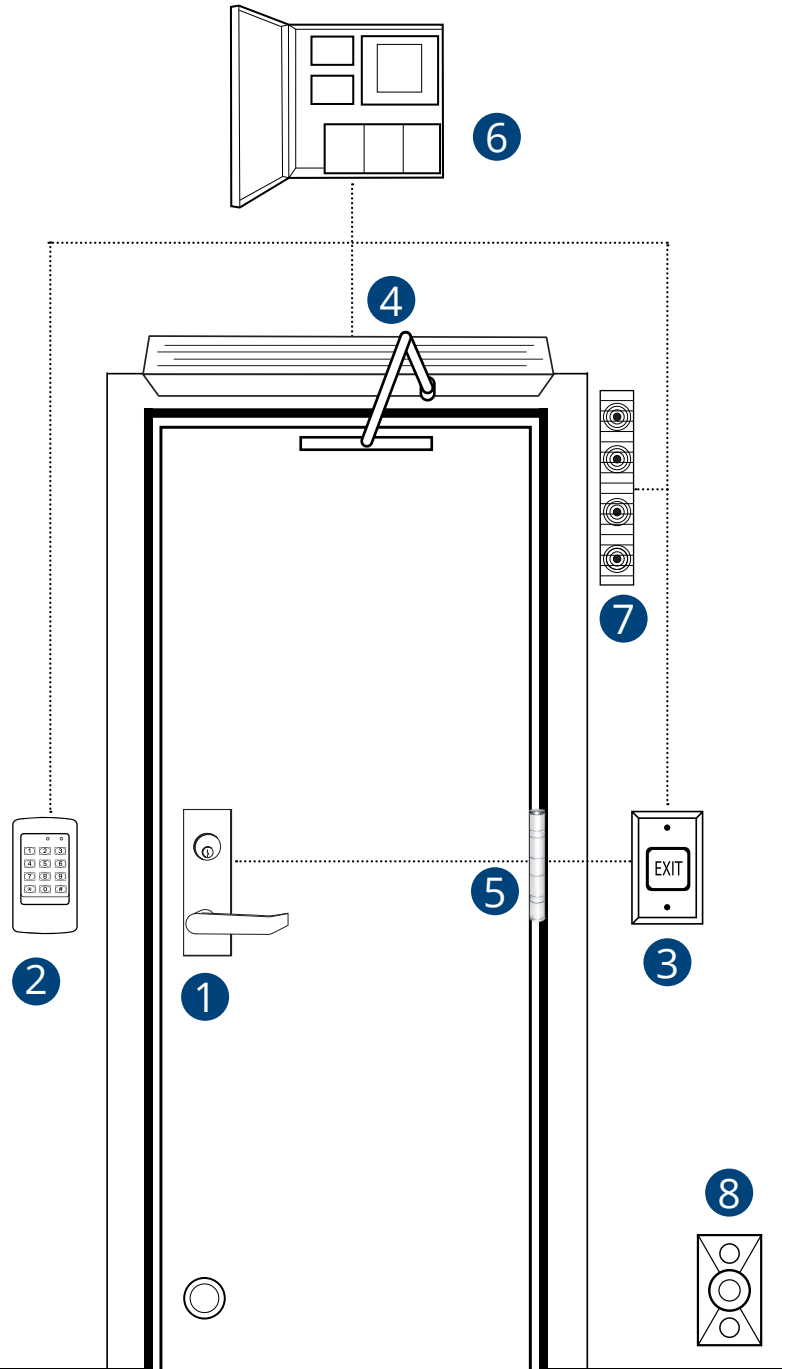
# COMPLETE COMPONENT CONSIDERATIONS

With a robust toolbox of over 35,000 SDC access & egress control components at your fingertips, you can assemble turnkey solutions to address both market-specific and application-specific requirements for almost any door opening imagined – while addressing a variety of factors, including:

- Level of Security
- Budget Restrictions
- Type of Door or Frame
- Life Safety Codes
- Aesthetics
- Retrofit or New Construction

## BASIC COMPONENT CONSIDERATIONS FOR CONTROLLED DOOR SYSTEMS

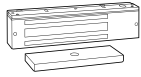
- 1 LOCKING DEVICES
- 2 ACCESS CONTROLS
- 3 EGRESS CONTROLS
- 4 ADA CONTROLS
- 5 POWER TRANSFER DEVICES
- 6 POWER SUPPLY & DOOR CONTROLS
- 7 REMOTE CONTROLS & ANNUNCIATORS
- 8 ACCESSORIES & MISC



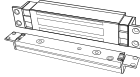
*Components not to scale*



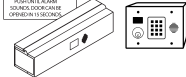
## 1 LOCKING DEVICES



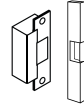
Electromagnetic Locks



Electromagnetic Shear Locks



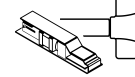
Delayed Egress Locks



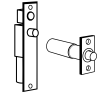
Electric Strikes



Electrified Locksets



Exit Devices & Retrofit ELR Kits

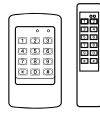


Electric Bolt Locks

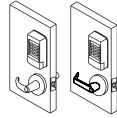
## 2 ACCESS CONTROLS



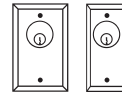
IP-Based Controllers



Keypads & Readers



Standalone Locksets

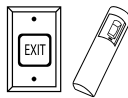


Key Switches

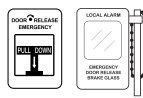
## 3 EGRESS CONTROLS



Egress Devices



Exit Switches & Sensors

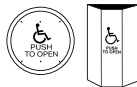


Emergency Door Releases

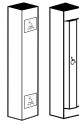
## 4 ADA CONTROLS



Low Energy Operators

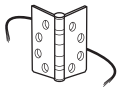


Push Plates & Panels



Bollards

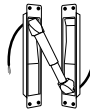
## 5 POWER TRANSFER DEVICES



Hinges



Loops

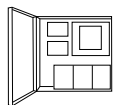


Mortise Transfer

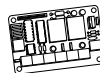


Wireless Transfer

## 6 POWER SUPPLY & DOOR CONTROLS



Power Controllers

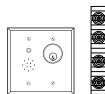


Door Controllers

## 7 REMOTE CONTROLS & ANNUNCIATORS



Remote Control Consoles



Door Prop Alarms & Annunciators

## 8 ACCESSORIES & MISC



Electromagnetic Door Holders



Door Position Monitoring



Latch & Deadbolt Monitoring Strikes

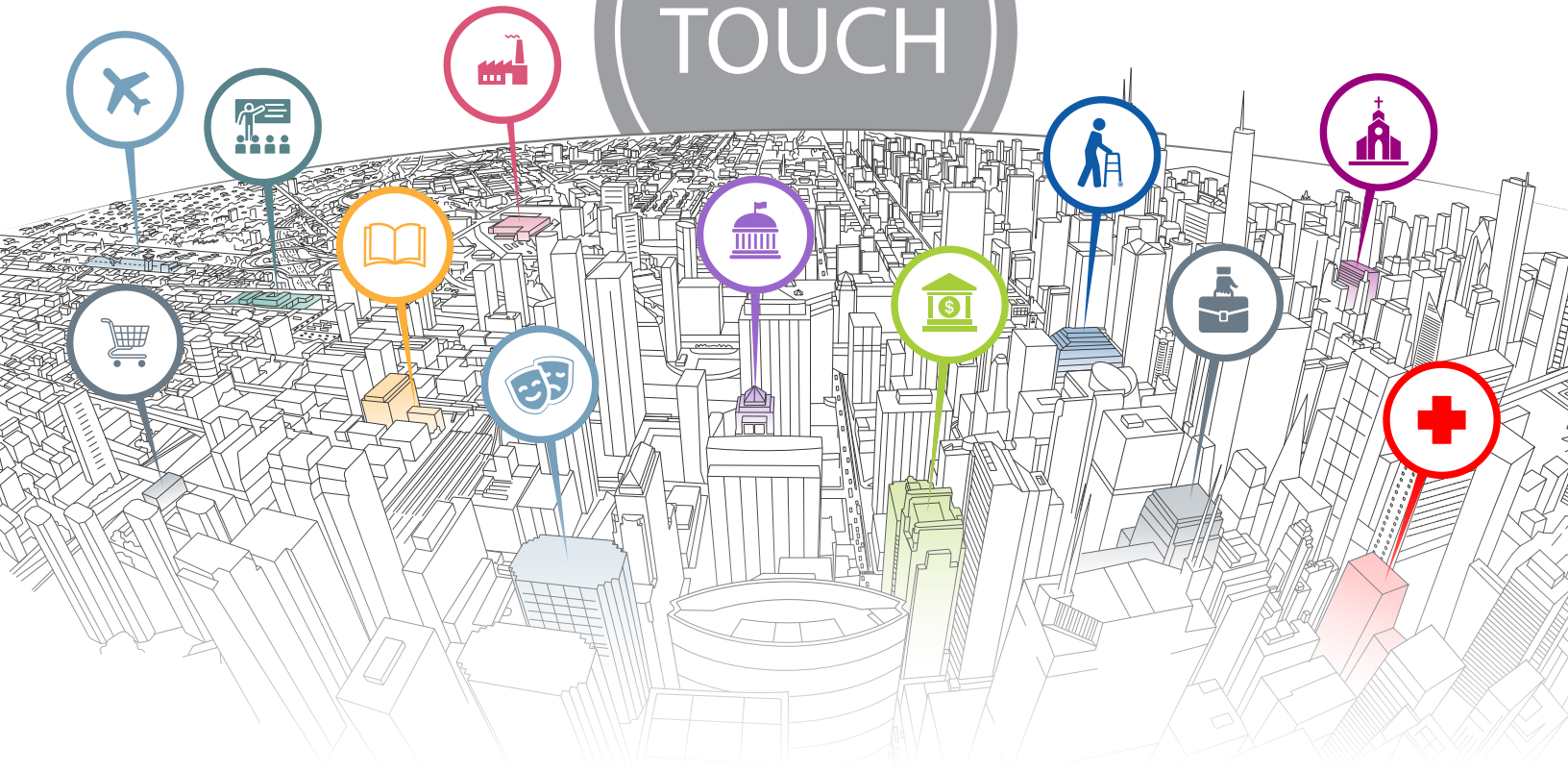


Wireless Transmitters & Receivers



Communicating Bathroom Controls

NO TOUCH



*Hands Free*

IT'S A NEW  WORLD