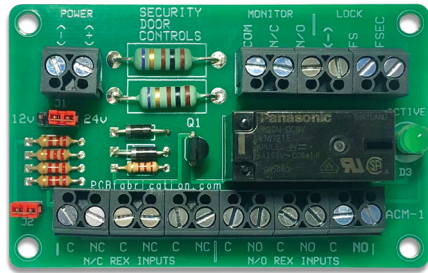


ACM-1

Six Input Control Relays



Door control relay modules ensure compatibility of access hardware components and simplify system installation and troubleshooting. Modules may be ordered with or without power supplies. Different modules may be specified for one power supply.

SDC's ACM-1 series allows for control of a single electrified locking device from up to six activation devices. LED visual status indicators provide relay activation status.



MODELS

ACM-1 Six Input Control Relay



STANDARD FEATURES

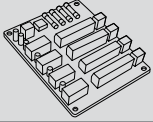
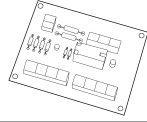
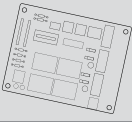
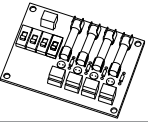
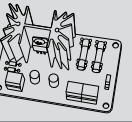
- Six trigger inputs
- Field selectable dual voltage
- Visual status indicators (LED)



APPLICATIONS

Control one lock with up to six activation devices.

CROSS REFERENCE


	CR4	ACM-1	EMC	FB-4	12VR
					
Description	Four station control relays	Six input control relays	Dual channel exit device sequencers	Four output power distribution modules	Voltage power converters
Application	Individual control of four locks	Control one lock with up to six activation devices	Sequence electrified panic device and operator for single or pair of doors	Distribute a single voltage output to four devices	Convert 24 VDC to regulated 12 VDC output
Inputs	(4) N/O, Dry	(3) N/O, Dry (3) N/C, Dry	(2) N/O, Dry	(1) Power, 12/24 VDC	(1) Power, 24 VDC
Outputs	(4) SPDT, Fused, Wet or Dry (4) SPDT, Unfused, Wet or Dry	(1) SPDT, Wet (1) SPDT, Dry	(4) N/O, Dry	(4) Fused Class 2, On/Off, 12/24VDC (Matches input)	(1) Fused Class 2, 12 VDC (1) Fused Class 2, 24 VDC
	CLICK TO VIEW	CLICK TO VIEW	CLICK TO VIEW	CLICK TO VIEW	CLICK TO VIEW

SPECIFICATIONS

	ACM-1
Input	12/24 VDC ± 10%
Input Current (Max)	75 mA
Input Configuration	(3) Normally Closed (N/C) (3) Normally Open (N/O)
Dimensions	3¼" x 2"
Contact	5 Amp @ 30 VDC Resistive
Output Configuration	(1) SPDT, Dry (1) SPDT, Voltage

HOW TO ORDER

FOLLOW STEPS FOR ORDERING

 Designates optional step

1| SPECIFY MODEL

ACM-1 Six Input Control Relay

STEP NUMBER: 1

ORDERING EXAMPLE: **ACM-1**