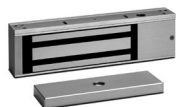
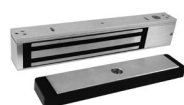


Value & Specialty Electromagnetic Locks

**E1200****E6200****350****1591****1575****E300**

MODEL		LIST \$
E1200	Value Single Magnetic Lock, 1200lbs, 628, DPS, BAS, LED	304.00
E600	Value Single Magnetic Lock, 600lbs, 628, DPS, BAS, LED	257.00
E6200	Industrial Single Magnetic Lock, 1200lbs, Weatherized, 630, DPS, BAS	507.00
350V	Narrow Single Magnetic Lock, 1200lbs, 628, DPS, BAS, LED	448.00
352V	Narrow Double Magnetic Lock, 1200lbs, 628, DPS, BAS, LED	893.00
1591U	Sliding Door Single Magnetic Lock, 850lbs, 630	425.00
1591UDPS	Sliding Door Single Magnetic Lock, 850lbs, 630, DPS	492.00
1575U	Gate Single Magnetic Lock, 1200lbs, Weatherized, 630, DPS, BAS	523.00
1576U	Gate Single Magnetic Lock, Face-Drilled, 1200lbs, Weatherized, 630, DPS, BAS	523.00
E300	Cabinet Single Magnetic Lock, 300lbs, 628, BAS	203.00

RELATED PRODUCTS

When you order any SDC products in this section, there are a number of related or complementary products that have proven to work well with your selection.

E12F01*	E1200 Filler Plate, 5/8" x 3/4" x 10 1/2"	26.00
E12F02*	E1200 Filler Plate, 3/4" x 3/4" x 10 1/2"	26.00
E12L*	E1200 Angle Bracket, 1 1/2" x 3/4" x 10 1/2"	32.00
E12Z	E1200 Top Jamb Mounting Kit	103.00
E12U	E1200 Glass Door Mounting Kit, 2 1/2" x 1 1/2" x 8 1/2"	147.00
E1200-DF	E1200 Heavy Duty Drill Fixture	184.00
E6Z	E600 Top Jamb Mounting Kit	103.00
E6U	E600 Glass Door Mounting Kit, 2 1/2" x 1 1/4" x 7 1/4"	147.00
TJ62V	E6200 Top Jamb Mounting Kit	147.00
TJ350V	350 Top Jamb Mounting Kit	160.00
TJ352V	352 Top Jamb Mounting Kit	280.00
HDB350V	350 Glass Door Mounting Kit, 2 1/2" x 1 1/2" x 9 7/8"	208.00
HDB352V	352 Glass Door Mounting Kit, 2 1/2" x 1 1/2" x 9 7/8", Qty 2	437.00
LAB	1591U Sliding Door Angle Bracket, 2" x 2" x 8"	68.00
AMP	1591U Sliding Door Armature Mounting Plate, 1 1/2" x 5/16" x 6 5/16"	56.00
1575-BK	1575 Angle Bracket, 2" x 2 3/8" x 8 1 1/16"	123.00
1576-AB	1576 Armature Mounting Bracket, 2 3/4" x 3 1/4" x 10 7/8"	98.00
1576-BK	1576 Angle Bracket, 1 3/16" x 2 3/4" x 8 1 1/16"	98.00
1576-MP	1576 Lock Body Mounting Plate, 1/4" x 2 1/2" x 8 1 1/16"	68.00
1576-ZBV**	1576 Z Bracket, 5 1/16" x 3 3/8" x 10 7/8"	194.00

* May be field cut for use with E600.

** Includes 1576-MP mounting plate.