

1490 / 2490 Spacesaver® Bolt Locks



The Spacesaver® Extra Narrow is fully concealed and easily installed in 1.5" (38.1mm) frame or door stile. First designed and patented by SDC, the Spacesaver® is a fundamental innovation in electric locking technology for access control applications.

The stainless steel bolt projects at right angles to the lock mechanism, allowing installation of Spacesaver® locks, by means of a simple cutout, in virtually any standard 1.5" frame, or in most door lock stiles. With the entire lock concealed, esthetic acceptability is complete, security is greater and installation in old or new construction is fast, easy and economical.



FEATURES

SOLID STAINLESS STEEL BOLT

Greater security is provided by the .625" diameter stainless steel bolt. The bolt rotates freely, making attempts to tamper or cut extremely difficult.

SPECIFICATION GRADE SOLENOIDS

All Spacesaver® lock solenoids are manufactured by SDC to precision specifications. SDC solenoids are capable of superior overall performance in both force and longevity, providing years of service.

FIELD ADJUSTABLE AUTO-RELOCK SWITCH

The automatic relock switch keeps the bolt retracted while the door is open. The door depresses the ball switch assembly on closure, causing the bolt to project automatically locking the door. In addition, the ball switch assembly is bi-directional, permitting the locks to be used on swinging and sliding doors.

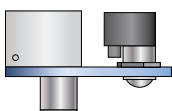


Fig. 1

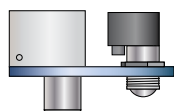


Fig. 2

The auto relock assembly is field adjustable to compensate for wide door gap. See Figure 1 & 2



MODELS



1490AI

Fail-safe, 24VDC only

2490AH

Fail-secure, 24VDC only



LOCK FUNCTION

1490A FAILSAFE

The 1490A is locked when energized. Recommended for safety applications, it is intended that the door unlock automatically when power is interrupted by the access control, power failure or signal from a fire life safety system.

- Bolt Throw 1/2" (12.7mm)

2490A FAILSECURE

The 2490A is locked when de-energized and unlocked when energized. Recommended for security applications only, it is intended that the door automatically locks when power is interrupted by the access control or power failure.

- Bolt Throw 1/2" (12.7 mm)



Figure 3A, 3B, 3C, 3D: Typical Frame Header or Side Jamb Installation

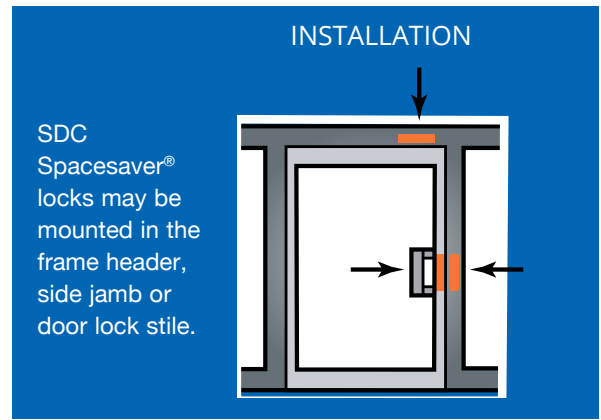
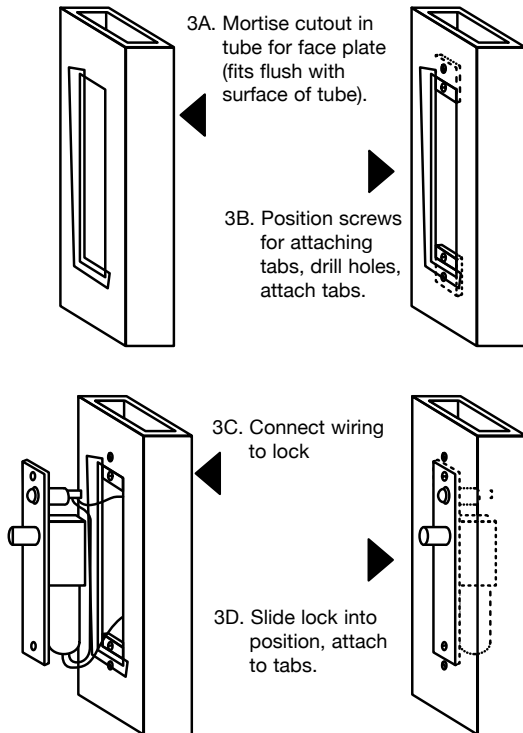
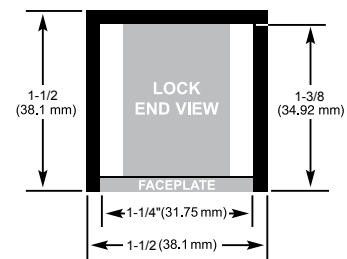


Figure 4



PRODUCT SKU SAMPLE: **1490AI C D B**



HOW TO ORDER

1| SPECIFY MODEL

1490AI Failsafe, 24VDC
2490AH Failsecure, 24VDC

2| SPECIFY FINISH

V 628 Clear Anodized Aluminum (Standard)

SPECIAL FINISHES:

C 605 Bright Brass
D 606 Dull Brass
F 611 Bright Bronze
G 612 Dull Bronze
H 613 Oil Rubbed Bronze
P 625 Bright Chrome
Q 626 Dull Chrome
U 630 Satin Stainless Steel
Y 335 Black Anodized

3| SPECIFY OPTIONS

B Bolt Position Sensor, SPDT
D Door Position Sensor, SPDT



SPECIFICATIONS

Face Plate	8"L x 1-1/4"W x 1/8"D
Strike	4"L x 1-1/2"W x 1/8"D
Frame Inner Dimension Requirements	8"L x 1-1/4"W x 1-3/8"D See figure4
Bolt Material	Stainless Steel
Bolt Diameter	5/8"
Bolt Throw	1/2"
Mounting Tabs	Two aluminum mounting tabs are provided for easy lock installation. See figure 3B
1490 Failsafe	0.45 Amp @ 24VDC Continuous Duty 0.9 Amp @ 12VDC Continuous Duty
2490 Failsecure	0.45 Amp @ 24VDC Continuous Duty 0.9 Amp @ 12VDC Continuous Duty