

602RF(A)(L) and 631RF(A)(L) tested according to UL Standard 1481, listing includes:

Access Control Systems Unit ALVY Burglar Alarm Systems Power Supply APHV
 Releasing Device Accessory SYSW Fire and Burglar Alarm Power Supply URTZ

632RF(A)(L) Access Control Systems Unit ALVY

632RF(A)(L), 634RF and 636RF UL listed as:
 General Purpose QQFU/QQFU7 Power Supply

BATTERIES SOLD SEPARATELY

STANDARD FEATURES:

- Modular design
- Filtered and regulated output
- Field selectable 12/24VDC
- Fire/Emergency release input
- Field selectable manual reset input (n/a with 631RF(A))
- Input, output and battery LED status indicators
- Thermal and short circuit protection with auto reset
- Battery charger
- Low battery disconnect



602RFL



631RFL



632RFL



602RF / 631RF



632RF
with optional power cord
and 2 - CR4 modules



631RFA
632RFA



634RF
636RF



12VR

FIELD SELECTABLE 12VDC OR 24VDC OUTPUTS

LIST

602RFL	1 Amp, class 2 output, less box	218.00
602RF	1 Amp, class 2 output, 12" W x 12" H x 3.75" D box	270.00
602RFA	1 Amp, class 2 output, 16" W x 14" H x 6.5" D box	383.00
631RFL	1.5 Amp, class 2 output, less box	270.00
631RF	1.5 Amp, class 2 output, 12" W x 12" H x 3.75" D box	363.00
631RFA	1.5 Amp, class 2 output, 16" W x 14" H x 6.5" D box	435.00
632RFL	2 Amp, class 2 output, less box	321.00
632RF	2 Amp, class 2 output, 12" W x 12" H x 3.75" D box	414.00
632RFA	2 Amp, class 2 output, 16" W x 14" H x 6.5" D box	477.00
634RF	4 Amp, field select one 4 Amp output, or two 2 Amp class 2 outputs	621.00
636RF	6 Amp, field select one 6 Amp output, or three 2 Amp class 2 outputs	725.00

DUAL 12VDC AND 24VDC OUTPUT CAPABILITY

Add to List

12VR	500mA, 12VDC regulated and filtered output module With the power supply output set at 24VDC for locking devices and components, the addition of the 12VR provides a separate 12VDC 500 mA output for access controls or other 12VDC devices	52.00
-------------	--	--------------

OPTIONS

Add to List

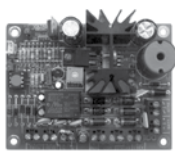
MR	Cover mounted manual reset switch for Fire/Emergency release <i>(not available on 631RF)</i>	38.00
PS-1	System On-Off push switch inside power supply enclosure	38.00
PS-1A	System On-Off push switch on enclosure cover	38.00
14-2	7 day - skip a day programmable timer. Automatically unlocks and locks all doors or specific doors on programmed days only.	249.00
PC	6 ft. power cord. Recommended for 1 Amp and 1.5 Amp, eliminating the need for AC conduit	38.00
KL	Key lock cover	38.00
220V/230V	230VAC, 50/60Hz	N/C



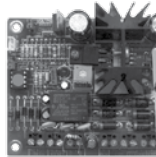
SECURITY DOOR CONTROLS
 801 Avenida Acaso • Camarillo, CA 93012
 Email: Service@sdgsecurity.com • www.sdgsecurity.com

Price List Effective February 1, 2017

Price List Effective February 1, 2017



621B



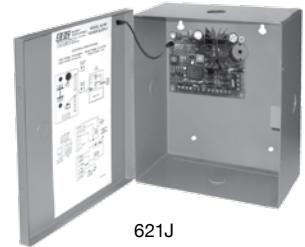
621P



2 Control Relays Standard



621PJ



621J



621P-UME

FEATURES

- 12VDC or 24VDC field selectable output
- 1 Amp maximum, filtered and regulated output
 - 1 power limited or lock control relay output
 - 1 power limited unswitched access control output
- Two control inputs
 - 1 lock control trigger input, normally open (NO)
 - 1 supervised emergency release input (latching w/reset or non-latching)
- Short circuit and thermal overload protection
- Battery charger output
- Automatically switched to battery back-up when AC fails
- Board equipped with AC input, DC output and battery status LED indicator
- Enclosure equipped with AC input, DC output and battery status LED indicator

Dimensions

Power Supply Board: 3.95" W x 3" H x 1.625" D
 Enclosure: 7.25" W x 8.375" H x 3.625" D

SECURITY DOOR CONTROLS
 801 Avenida Acaso • Camarillo, CA 93012
 Email: Service@sdsecurity.com • www.sdsecurity.com



RB12V4
4 Amp Hour



RB12V7
7 Amp Hour

MODEL	LIST
621PJ Power supply module and cabinet, door mount LED system status indicator UL Listed 24VAC, 40 VA plug-in transformer	202.00
621J Power supply module, cabinet with door mounted LED system status indicator	182.00
621P Power supply module, retrofit mounting hardware includes flush mount standoffs or Velcro. UL Listed 24VAC, 40 VA plug-in transformer	145.00
621B Power supply module only, retrofit mounting hardware includes flush mount standoffs or Velcro	125.00

BATTERIES

RB12V4 12V/4Ah Battery. 621PJ accommodates two.	42.00
RB12V7 12V/7Ah Battery. 621PJ accommodates one.	63.00

UME Universal Module Enclosure

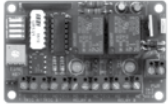
NK



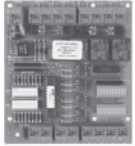
Universal Module Enclosure for single modules
 Universal mounting standoffs will accommodate
 FB-4, UR-1, 12VR, ACM-1, PB-16, PB-8, PSM, 621B, or LR100EM boards.
 Box Dimensions: 5-5/8"H x 7-11/16"W x 3-3/8"D

UME Single module enclosure	32.00
------------------------------------	--------------

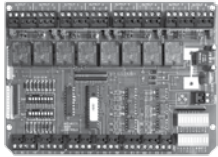
Power Supply & Door Controllers



UR-1



UR2-4



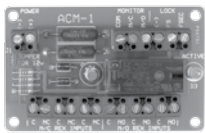
UR4-8



"Security Industry Finest"
ISC Expo



FB-4



ACM-1



CR4



PB-8



PSM



RB12V4
4 Amp Hour



RB12V7
7 Amp Hour

UNIVERSAL CONTROLLER & MANTRAP MODULES

LIST

- UR-1** Universal Controller for up to 2 doors. 12 Selectable Relay & System Logic Modes. 2 form "A" SPST, N.O. Inputs, 2 form "C" SPST outputs 5 Amps, 12/24 @ 120/175mA. **100.00**
- UR2-4** Universal Controller for 2 doors. Field select TD, LR, TD/LR, mantrap A, B, C interlock. Two fused SPDT outputs, 5 Amp @ 30VDC. Two SPDT outputs, 5 Amp @ 30VDC. Two inputs per station, four auxiliary inputs. **228.00**
- UR4-8** Universal Controller for 4 doors. Field select TD, LR, CR, TD/LR, mantrap A, B interlock. Four fused SPDT outputs, 5 Amp @ 30VDC. Four SPDT outputs, 5 Amp @ 30VDC. Two inputs per station, four auxiliary inputs. **321.00**

DOOR CONTROL MODULES

LIST

Modules may be ordered with or without power supplies. Different function modules may be used in the same power supply or cabinet. Contacts: 2.5 Amps inductive, 5 Amps resistive @ 30VDC unless specified otherwise.

- FB-4** Fused terminal board. 4 individually fused outputs **42.00**
- ACM-1** Access Control Module. One SPDT voltage output, one SPDT status output, eight trigger inputs, (3N/C, 3N/O), LED status indicator. **94.00**
- CR4** Control Board with four relays. Four fused SPDT field selectable wet or dry outputs, four non-fused SPDT outputs, 2 Amps @ 30VDC, four dry contact trigger inputs. **171.00**
- PB-8** Power booster for high inrush electric panic devices and locks. 1 Amp continuous @ 24VDC, 8 Amp surge output. **125.00**
- PB-16** Power booster for high inrush electric panic devices and locks. 1 Amp continuous @ 24VDC, 16 Amp surge output. **156.00**

POWER SUPPLY MONITORING

LIST

- PSM** Power Supply Monitoring Module **228.00**
For remote monitoring of power supply AC input, DC output and battery backup On/Off status. 2 SPDT Relay Outputs, 1 Amp @ 12/24VDC

EXIT DEVICE SEQUENCER

LIST

- EMC** Sequencer Module required for pair of doors and automatic doors. 12/24 VDC For use with SDC 602RF and 632RF Power Supplies. **156.00**

BATTERIES

LIST

- RB12V4** 12V/4Ah Battery. Specify in pairs for 24V. 600RF accommodates four. **42.00**
- RB12V7** 12V/7Ah Battery. Specify in pairs for 24V. 600RFA accommodates six **63.00**

Cabinet Control Module Capacity

	Number of Batteries	ACM-1	CR	CR-4	FB-4	LR	PB	UR	PSM
12x12	0-2	2	4	2	4	4	2	0	1
	3-4	1	2	1	2	2	2	0	1
16x14	0-2	4	8	4	4	8	6	2	1
	3-6	2	6	2	2	4	4	1	1



SECURITY DOOR CONTROLS
801 Avenida Acaso • Camarillo, CA 93012
Email: Service@sdccsecurity.com • www.sdccsecurity.com

Price List Effective February 1, 2017

DC Regulated Power Supplies



Distributor Discount Code **V LIST**



TR12 1 Amp 12VDC Regulated Plug-In Power Supply

75.00

- Thermal overload protection
- LED Power status indicator
- Secondary connection: Screw terminals
- Primary Input: 120VAC
- UL Listed, Class 2



TR24 1 Amp 24VDC Regulated Plug-In Power Supply

77.00

- Thermal overload protection
- Secondary connection: 6ft wire leads
- Primary Input: 120VAC
- UL Listed, Class 2

Transformers



Distributor Discount Code **V LIST**



TP1220 1.6 Amp 12VAC Plug-In Transformer

21.00

- Thermal overload protection
- Secondary connection: Screw terminals
- Thermal overload protection
- Primary Input: 120VAC
- UL Listed, Class 2



TP2440 1.6 Amp 24VAC Plug-In Transformer

38.00

- Thermal overload protection
- Secondary connection: Screw terminals
- Thermal overload protection
- Primary Input: 120VAC
- UL Listed, Class 2



BR64XL Bridge Rectifier, 6" wire leads. Converts AC transformer output to DC

26.00

Price List Effective February 1, 2017

SDC
SECURITY DOOR CONTROLS
 801 Avenida Acaso • Camarillo, CA 93012
 Email: Service@sdsecurity.com • www.sdsecurity.com



Power Supply & Door Controllers

Power Supply Capacity Chart

EMLOCK ELECTROMAGNETIC LOCKS	VOLTS	AMPS	602RF 621 1 AMP	631RF 631RFA 1.5 AMP	632RF 632RFA 2 AMP	634RF 4 AMP	636RF 6 AMP
1511 SINGLE	12VDC 24VDC	.70A .35A	1 2	2 4	2 5	5 11	8 17
1512 DOUBLE	12VDC 24VDC	1.40A .70A	0 1	1 2	1 2	3 5	4 8
1561, 1562	12VDC 24VDC	.65A .35A	1 2	2 4	3 5	6 11	9 17
1565, 1566	12VDC 24VDC	.80A .40A	1 2	1 3	2 5	5 10	7 15
1571 ENERGY SAVER	12VDC 24VDC	.25A .125A	4 8	6 12	8 16	16 31	24 48
1572 ENERGY SAVER	12VDC 24VDC	.50A .25A	2 4	3 6	4 8	8 16	12 24
1575, 1576	12VDC 24VDC	.45A .225A	2 4	3 6	4 8	8 16	12 24
1581 SINGLE	12VDC 24VDC	.44A .22A	2 4	3 6	4 6	9 18	13 27
1582 DOUBLE	12VDC 24VDC	.88A .44A	1 2	1 3	2 4	4 9	6 13
EXIT CHECK INTEGRATED DELAYED EGRESS EMLOCKS							
1581S	12VDC 24VDC	.50A .32A	2 3	3 4	4 6	8 11	12 18
1511S	12VDC 24VDC	.83A .45A	1 2	1 3	2 4	4 8	6 12
1511T	12VDC 24VDC	1.56A .92A	0 1	0 1	1 2	2 4	3 6
1511S With (E) Energy Saver Option	12VDC 24VDC	.40A .275A	2 3	3 5	5 7	10 14	15 21
1511T With (E) Energy Saver Option	12VDC 24VDC	.65A .40A	1 2	2 3	4 5	6 10	9 15
EXIT CHECK EMLOCK WITH WALL MOUNT CONTROLLER							
101-DE x 1511DE	12VDC 24VDC	.85A .53A	1 1	1 2	2 3	4 7	7 11
ENERGY SAVER 101-DE x 1571DE	12VDC 24VDC	.43A .31A	2 3	3 4	4 6	9 12	13 19
101-DE x 1581DE	12VDC 24VDC	.62A .40A	1 2	2 3	3 5	6 10	9 15



SECURITY DOOR CONTROLS
801 Avenida Acaso • Camarillo, CA 93012
Email: Service@sdcsecurity.com • www.sdcsecurity.com

Price List Effective February 1, 2017

Power Supply Capacity Chart (continued)

HITOWER ELECTRIC LOCKS	VOLTS	AMPS	602RF 621 1 AMP	631RF 631RFA 1.5 AMP	632RF 632RFA 2 AMP	634RF 4 AMP	636RF 6 AMP
7200	12VDC 24VDC	.60A .30A	1 2	2 5	3 6	6 13	10 21
7500 FAIL SAFE	24VDC	.50A	2	3	4	8	12
7500 FAIL SECURE	24VDC	.80A	1	1	3	5	7
7800	12VDC 24VDC	.60A .30A	1 2	2 5	3 6	6 13	10 20
SPACESAVER ELECTRIC BOLT LOCKS							
100,1000, FS	12VDC 24VDC	.90A .45A	1 2	1 3	2 4	4 8	6 12
1100	24VDC	.50A	2	3	4	8	12
1200	12VDC 24VDC	.90A .45A	1 2	1 3	2 4	4 8	6 12
2000	24VDC	2.5A InRush .4A Cont.	1 1X-PB	*2 1XPB-8	*4 2XPB-8	*6 3XPB-8	*8 4XPB-8
ELECTRIC STRIKES							
15	12VDC	.20A	4	7	10	20	30
25	12VDC 24VDC	.30A .15A	3 6	5 10	6 13	13 26	20 40
30	12VDC 24VDC	.51A .25A	1 4	2 6	3 8	7 16	11 24
45	12VDC 24VDC	.28A .14A	3 6	5 10	6 13	13 26	20 40
EXIT DEVICES							
E Electric Latch Retraction with 1 EMC Sequencer with 2 EMC Sequencers	24VDC	.7A	1 1	2 2	4 4	8	12
B Exit Alarm	12VDC 24VDC	.100A .100A	10 10				
M Electric Mortise Device	12VDC 24VDC	.6A .3A	1 3	2 5	3 6	6 13	10 20

Price List Effective February 1, 2017

SDC SECURITY DOOR CONTROLS
801 Avenida Acaso • Camarillo, CA 93012
Email: Service@sdsecurity.com • www.sdsecurity.com

