

**602RF(A)(L) and 631RF(A)(L) tested according to UL Standard 1481, listing includes:**

Access Control Systems Unit ALVY      Burglar Alarm Systems Power Supply APHV  
 Releasing Device Accessory SYSW      Fire and Burglar Alarm Power Supply URTZ

**632RF(A)(L)** Access Control Systems Unit ALVY

**632RF(A)(L), 634RF and 636RF UL listed as:**  
 General Purpose QQFU/QQFU7 Power Supply

**BATTERIES SOLD SEPARATELY**

**STANDARD FEATURES:**

- Modular design
- Filtered and regulated output
- Field selectable 12/24VDC
- Fire/Emergency release input
- Field selectable manual reset input (n/a with 631RF(A))
- Input, output and battery LED status indicators
- Thermal and short circuit protection with auto reset
- Battery charger
- Low battery disconnect



602RFL



631RFL



632RFL



602RF / 631RF



632RF  
 with optional power cord  
 and 2 - CR4 modules



631RFA  
 632RFA



634RF  
 636RF



12VR

**FIELD SELECTABLE 12VDC OR 24VDC OUTPUTS**

LIST

<b>602RFL</b>	1 Amp, class 2 output, less box	<b>218.00</b>
<b>602RF</b>	1 Amp, class 2 output, 12" W x 12" H x 3.75" D box	<b>270.00</b>
<b>602RFA</b>	1 Amp, class 2 output, 16" W x 14" H x 6.5" D box	<b>383.00</b>
<b>631RFL</b>	1.5 Amp, class 2 output, less box	<b>270.00</b>
<b>631RF</b>	1.5 Amp, class 2 output, 12" W x 12" H x 3.75" D box	<b>363.00</b>
<b>631RFA</b>	1.5 Amp, class 2 output, 16" W x 14" H x 6.5" D box	<b>435.00</b>
<b>632RFL</b>	2 Amp, class 2 output, less box	<b>321.00</b>
<b>632RF</b>	2 Amp, class 2 output, 12" W x 12" H x 3.75" D box	<b>414.00</b>
<b>632RFA</b>	2 Amp, class 2 output, 16" W x 14" H x 6.5" D box	<b>477.00</b>
<b>634RF</b>	4 Amp, field select one 4 Amp output, or two 2 Amp class 2 outputs	<b>621.00</b>
<b>636RF</b>	6 Amp, field select one 6 Amp output, or three 2 Amp class 2 outputs	<b>725.00</b>

**DUAL 12VDC AND 24VDC OUTPUT CAPABILITY**

Add to List

<b>12VR</b>	500mA, 12VDC regulated and filtered output module With the power supply output set at 24VDC for locking devices and components, the addition of the 12VR provides a separate 12VDC 500 mA output for access controls or other 12VDC devices	<b>52.00</b>
-------------	--	--------------

**OPTIONS**

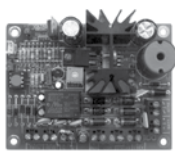
Add to List

<b>MR</b>	Cover mounted manual reset switch for Fire/Emergency release <i>(not available on 631RF)</i>	<b>38.00</b>
<b>PS-1</b>	System On-Off push switch inside power supply enclosure	<b>38.00</b>
<b>PS-1A</b>	System On-Off push switch on enclosure cover	<b>38.00</b>
<b>14-2</b>	7 day - skip a day programmable timer. Automatically unlocks and locks all doors or specific doors on programmed days only.	<b>249.00</b>
<b>PC</b>	6 ft. power cord. Recommended for 1 Amp and 1.5 Amp, eliminating the need for AC conduit	<b>38.00</b>
<b>KL</b>	Key lock cover	<b>38.00</b>
<b>220V/230V</b>	230VAC, 50/60Hz	<b>N/C</b>

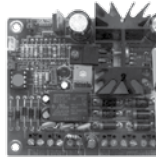


**SECURITY DOOR CONTROLS**  
 801 Avenida Acaso • Camarillo, CA 93012  
 Email: Service@sdgsecurity.com • www.sdgsecurity.com

Price List Effective February 1, 2017



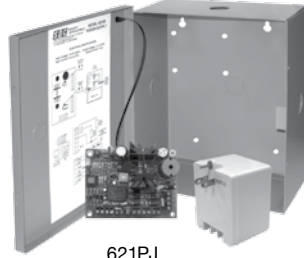
621B



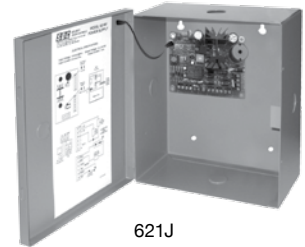
621P



**2 Control Relays Standard**



621PJ



621J



621P-UME

**FEATURES**

- 12VDC or 24VDC field selectable output
- 1 Amp maximum, filtered and regulated output
  - 1 power limited or lock control relay output
  - 1 power limited unswitched access control output
- Two control inputs
  - 1 lock control trigger input, normally open (NO)
  - 1 supervised emergency release input (latching w/reset or non-latching)
- Short circuit and thermal overload protection
- Battery charger output
- Automatically switched to battery back-up when AC fails
- Board equipped with AC input, DC output and battery status LED indicator
- Enclosure equipped with AC input, DC output and battery status LED indicator

**Dimensions**

Power Supply Board: 3.95" W x 3" H x 1.625" D  
 Enclosure: 7.25" W x 8.375" H x 3.625" D

MODEL		LIST
<b>621PJ</b>	Power supply module and cabinet, door mount LED system status indicator UL Listed 24VAC, 40 VA plug-in transformer	<b>202.00</b>
<b>621J</b>	Power supply module, cabinet with door mounted LED system status indicator	<b>182.00</b>
<b>621P</b>	Power supply module, retrofit mounting hardware includes flush mount standoffs or Velcro. UL Listed 24VAC, 40 VA plug-in transformer	<b>145.00</b>
<b>621B</b>	Power supply module only, retrofit mounting hardware includes flush mount standoffs or Velcro	<b>125.00</b>



RB12V4  
4 Amp Hour



RB12V7  
7 Amp Hour

**BATTERIES**

<b>RB12V4</b>	12V/4Ah Battery. 621PJ accommodates two.	<b>42.00</b>
<b>RB12V7</b>	12V/7Ah Battery. 621PJ accommodates one.	<b>63.00</b>

**UME Universal Module Enclosure**

**NK**



Universal Module Enclosure for single modules  
 Universal mounting standoffs will accommodate  
 FB-4, UR-1, 12VR, ACM-1, PB-16, PB-8, PSM, 621B, or LR100EM boards.  
 Box Dimensions: 5-5/8"H x 7-11/16"W x 3-3/8"D

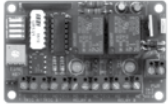
<b>UME</b>	Single module enclosure	<b>32.00</b>
------------	-------------------------	--------------

Price List Effective February 1, 2017

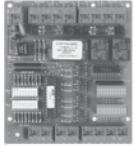
**SDC SECURITY DOOR CONTROLS**  
 801 Avenida Acaso • Camarillo, CA 93012  
 Email: Service@sdsecurity.com • www.sdsecurity.com



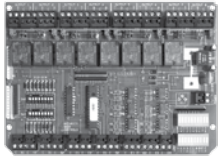
Power Supply & Door Controllers



UR-1



UR2-4



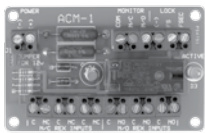
UR4-8



"Security Industry Finest"  
ISC Expo



FB-4



ACM-1



CR4



PB-8



PSM



RB12V4  
4 Amp Hour



RB12V7  
7 Amp Hour

## UNIVERSAL CONTROLLER & MANTRAP MODULES

LIST

- UR-1** Universal Controller for up to 2 doors. 12 Selectable Relay & System Logic Modes. 2 form "A" SPST, N.O. Inputs, 2 form "C" SPST outputs 5 Amps, 12/24 @ 120/175mA. **100.00**
- UR2-4** Universal Controller for 2 doors. Field select TD, LR, TD/LR, mantrap A, B, C interlock. Two fused SPDT outputs, 5 Amp @ 30VDC. Two SPDT outputs, 5 Amp @ 30VDC. Two inputs per station, four auxiliary inputs. **228.00**
- UR4-8** Universal Controller for 4 doors. Field select TD, LR, CR, TD/LR, mantrap A, B interlock. Four fused SPDT outputs, 5 Amp @ 30VDC. Four SPDT outputs, 5 Amp @ 30VDC. Two inputs per station, four auxiliary inputs. **321.00**

## DOOR CONTROL MODULES

LIST

**Modules may be ordered with or without power supplies. Different function modules may be used in the same power supply or cabinet. Contacts: 2.5 Amps inductive, 5 Amps resistive @ 30VDC unless specified otherwise.**

- FB-4** Fused terminal board. 4 individually fused outputs **42.00**
- ACM-1** Access Control Module. One SPDT voltage output, one SPDT status output, eight trigger inputs, (3N/C, 3N/O), LED status indicator. **94.00**
- CR4** Control Board with four relays. Four fused SPDT field selectable wet or dry outputs, four non-fused SPDT outputs, 2 Amps @ 30VDC, four dry contact trigger inputs. **171.00**
- PB-8** Power booster for high inrush electric panic devices and locks. 1 Amp continuous @ 24VDC, 8 Amp surge output. **125.00**
- PB-16** Power booster for high inrush electric panic devices and locks. 1 Amp continuous @ 24VDC, 16 Amp surge output. **156.00**

## POWER SUPPLY MONITORING

LIST

- PSM** Power Supply Monitoring Module **228.00**  
For remote monitoring of power supply AC input, DC output and battery backup On/Off status. 2 SPDT Relay Outputs, 1 Amp @ 12/24VDC

## EXIT DEVICE SEQUENCER

LIST

- EMC** Sequencer Module required for pair of doors and automatic doors. 12/24 VDC For use with SDC 602RF and 632RF Power Supplies. **156.00**

## BATTERIES

LIST

- RB12V4** 12V/4Ah Battery. Specify in pairs for 24V. 600RF accommodates four. **42.00**
- RB12V7** 12V/7Ah Battery. Specify in pairs for 24V. 600RFA accommodates six **63.00**

### Cabinet Control Module Capacity

	Number of Batteries	ACM-1	CR	CR-4	FB-4	LR	PB	UR	PSM
<b>12x12</b>	0-2	2	4	2	4	4	2	0	1
	3-4	1	2	1	2	2	2	0	1
<b>16x14</b>	0-2	4	8	4	4	8	6	2	1
	3-6	2	6	2	2	4	4	1	1



**SECURITY DOOR CONTROLS**  
801 Avenida Acaso • Camarillo, CA 93012  
Email: Service@sdccsecurity.com • www.sdccsecurity.com

Price List Effective February 1, 2017

## DC Regulated Power Supplies



Distributor Discount Code **V LIST**



### TR12 1 Amp 12VDC Regulated Plug-In Power Supply

75.00

- Thermal overload protection
- LED Power status indicator
- Secondary connection: Screw terminals
- Primary Input: 120VAC
- UL Listed, Class 2



### TR24 1 Amp 24VDC Regulated Plug-In Power Supply

77.00

- Thermal overload protection
- Secondary connection: 6ft wire leads
- Primary Input: 120VAC
- UL Listed, Class 2

## Transformers



Distributor Discount Code **V LIST**



### TP1220 1.6 Amp 12VAC Plug-In Transformer

21.00

- Thermal overload protection
- Secondary connection: Screw terminals
- Thermal overload protection
- Primary Input: 120VAC
- UL Listed, Class 2



### TP2440 1.6 Amp 24VAC Plug-In Transformer

38.00

- Thermal overload protection
- Secondary connection: Screw terminals
- Thermal overload protection
- Primary Input: 120VAC
- UL Listed, Class 2



### BR64XL Bridge Rectifier, 6" wire leads. Converts AC transformer output to DC

26.00

Price List Effective February 1, 2017

**SDC**  
**SECURITY DOOR CONTROLS**  
801 Avenida Acaso • Camarillo, CA 93012  
Email: Service@sdsecurity.com • www.sdsecurity.com

Power Supply & Door Controllers

## Power Supply Capacity Chart

EMLOCK ELECTROMAGNETIC LOCKS	VOLTS	AMPS	602RF 621 1 AMP	631RF 631RFA 1.5 AMP	632RF 632RFA 2 AMP	634RF 4 AMP	636RF 6 AMP
1511 SINGLE	12VDC 24VDC	.70A .35A	1 2	2 4	2 5	5 11	8 17
1512 DOUBLE	12VDC 24VDC	1.40A .70A	0 1	1 2	1 2	3 5	4 8
1561, 1562	12VDC 24VDC	.65A .35A	1 2	2 4	3 5	6 11	9 17
1565, 1566	12VDC 24VDC	.80A .40A	1 2	1 3	2 5	5 10	7 15
1571 ENERGY SAVER	12VDC 24VDC	.25A .125A	4 8	6 12	8 16	16 31	24 48
1572 ENERGY SAVER	12VDC 24VDC	.50A .25A	2 4	3 6	4 8	8 16	12 24
1575, 1576	12VDC 24VDC	.45A .225A	2 4	3 6	4 8	8 16	12 24
1581 SINGLE	12VDC 24VDC	.44A .22A	2 4	3 6	4 6	9 18	13 27
1582 DOUBLE	12VDC 24VDC	.88A .44A	1 2	1 3	2 4	4 9	6 13
<b>EXIT CHECK INTEGRATED DELAYED EGRESS EMLOCKS</b>							
1581S	12VDC 24VDC	.50A .32A	2 3	3 4	4 6	8 11	12 18
1511S	12VDC 24VDC	.83A .45A	1 2	1 3	2 4	4 8	6 12
1511T	12VDC 24VDC	1.56A .92A	0 1	0 1	1 2	2 4	3 6
1511S With (E) Energy Saver Option	12VDC 24VDC	.40A .275A	2 3	3 5	5 7	10 14	15 21
1511T With (E) Energy Saver Option	12VDC 24VDC	.65A .40A	1 2	2 3	4 5	6 10	9 15
<b>EXIT CHECK EMLOCK WITH WALL MOUNT CONTROLLER</b>							
101-DE x 1511DE	12VDC 24VDC	.85A .53A	1 1	1 2	2 3	4 7	7 11
ENERGY SAVER 101-DE x 1571DE	12VDC 24VDC	.43A .31A	2 3	3 4	4 6	9 12	13 19
101-DE x 1581DE	12VDC 24VDC	.62A .40A	1 2	2 3	3 5	6 10	9 15



**SECURITY DOOR CONTROLS**  
801 Avenida Acaso • Camarillo, CA 93012  
Email: Service@sdcsecurity.com • www.sdcsecurity.com

Price List Effective February 1, 2017

## Power Supply Capacity Chart ( continued )

HITOWER ELECTRIC LOCKS	VOLTS	AMPS	602RF 621 1 AMP	631RF 631RFA 1.5 AMP	632RF 632RFA 2 AMP	634RF 4 AMP	636RF 6 AMP
7200	12VDC 24VDC	.60A .30A	1 2	2 5	3 6	6 13	10 21
7500 FAIL SAFE	24VDC	.50A	2	3	4	8	12
7500 FAIL SECURE	24VDC	.80A	1	1	3	5	7
7800	12VDC 24VDC	.60A .30A	1 2	2 5	3 6	6 13	10 20
<b>SPACESAVER ELECTRIC BOLT LOCKS</b>							
100,1000, FS	12VDC 24VDC	.90A .45A	1 2	1 3	2 4	4 8	6 12
1100	24VDC	.50A	2	3	4	8	12
1200	12VDC 24VDC	.90A .45A	1 2	1 3	2 4	4 8	6 12
2000	24VDC	2.5A InRush .4A Cont.	1 1X-PB	*2 1XPB-8	*4 2XPB-8	*6 3XPB-8	*8 4XPB-8
<b>ELECTRIC STRIKES</b>							
15	12VDC	.20A	4	7	10	20	30
25	12VDC 24VDC	.30A .15A	3 6	5 10	6 13	13 26	20 40
30	12VDC 24VDC	.51A .25A	1 4	2 6	3 8	7 16	11 24
45	12VDC 24VDC	.28A .14A	3 6	5 10	6 13	13 26	20 40
<b>EXIT DEVICES</b>							
E Electric Latch Retraction with 1 EMC Sequencer with 2 EMC Sequencers	24VDC	.7A	1 1	2 2	4 4	8	12
B Exit Alarm	12VDC 24VDC	.100A .100A	10 10				
M Electric Mortise Device	12VDC 24VDC	.6A .3A	1 3	2 5	3 6	6 13	10 20

Price List Effective February 1, 2017

**SDC SECURITY DOOR CONTROLS**  
801 Avenida Acaso • Camarillo, CA 93012  
Email: Service@sdsecurity.com • www.sdsecurity.com

