



# UniFLEX™ 45 Series Universal Electric Strike

## UniFLEX™ Series Multi-Application Electric Strike

- Centerline Electric Strike
- 4 Interchangeable Application Faceplates
- Full Monitoring is Standard, Including:  
Latched and Unlatched Status  
Keeper Closed and Deadlocked or Unlocked
- Keeper Open Status Optional
- Reversible Failsafe/Failsecure, no disassembly
- 1/4" Horizontal Alignment Adjustment
- Plated Architectural Finishes Available

The SDC UniFLEX electric strike is designed for use with locksets with up to 3/4" latchbolts\*. The quality construction makes the 45 series ideal for high traffic applications. The compact low profile design enables quick and easy installation where jamb space is limited.

### Features

- For 5/8" latch or 3/4" latch with 1/8" door gap
- Latch position status standard
- Keeper closed & deadlocked/unlocked status standard
- Field selectable failsecure - failsafe
- Field selectable voltage, 12/24V AC/DC
- 1/4" Horizontal alignment adjustment
- Low profile, 1-3/16" deep
- Plug-in wire connectors
- Mounting tabs
- Non-handed
- All stainless steel parts with durable die cast body for corrosion resistance
- Fewer moving parts for maximum life
- Stainless steel standard with square corner faceplate
- Aluminum standard with radius corner faceplate
- ANSI/ BHMA A156.31, Grade 2



US Patent: 7,540,542



45-4S

45-4R

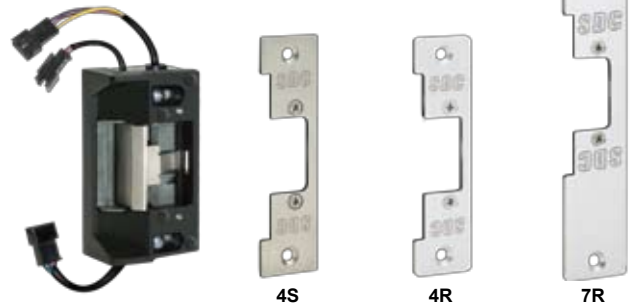
45-6R

45-7R

SDC Patented

### UniFLEX™ 45-A

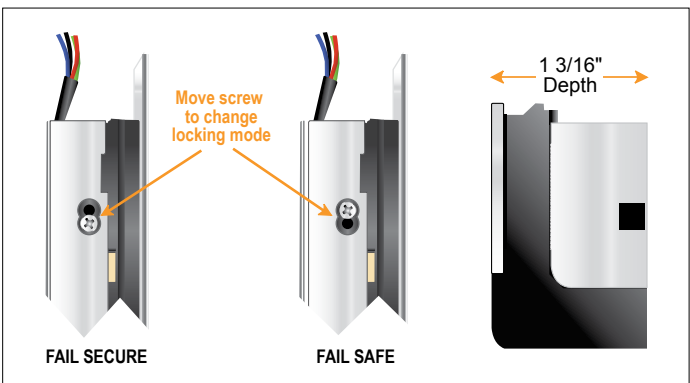
Multi-Application strike with three faceplates for wood, aluminum and hollow metal frames



4S

4R

7R



FAIL SECURE

FAIL SAFE

SECURITY DOOR CONTROLS

sdsecurity.com service@sdsecurity.com



## Uni-Flex 45 Series Electric Strike

### How to Order

**Model**

--	--	--	--	--	--	--	--

- 45-4S** 4-7/8" x 1-1/4" square corner faceplate
- 45-4R** 4-7/8" x 1-1/4" radius corner faceplate
- 45-6R** 6-7/8" x 1-1/4" radius corner faceplate
- 45-7R** 7-15/16" x 1-7/16" radius corner faceplate
- 45-A** Included: One 4-7/8" square corner faceplate  
One 4-7/8" radius corner faceplate  
One 7-15/16" radius corner faceplate

Latch Position Status Standard  
Keeper Closed and Deadlocked/Unlocked Status Standard

**Finish**

--	--	--	--	--	--	--	--

- U** 630 Dull Stainless Steel (standard with 45-4S)
- V** 628 Dull Aluminum (standard with 45-4R, 45-6R and 45-7R)
- Y** 335 Black Anodized
- D** 606 Dull Brass
- H** 613 Oil Rubbed Bronze

**Options**

--	--	--	--	--	--	--	--

- K** Keeper open/closed status
- RMB** Buzzer 12/24V AC/DC operation

**Electrical Specifications**

**Dual Voltage Coil:** 280/140mA @ 12/24V DC  
170/85mA @ 12/24V AC  
**Latch Position Status (std):** SPDT, Dry 3Amp @ 30V  
**Keeper Closed & Locked Status (std):** SPDT, Dry 3Amp @ 30V  
**Keeper Open/Closed Status (optional):** SPDT, Dry 3Amp @ 30V

**Dimensions**

- 45-4S / 45-4R:** 1-1/4" W x 4-7/8" H x 1-3/16" D  
(31.8 W x 124 H x 30.1 D mm)
- 45-6R:** 1-1/4" W x 6-7/8" H x 1-3/16" D  
(31.8 W x 175 H x 30.1 D mm)
- 45-7R:** 1-7/16" W x 7-15/16" H x 1-3/16" D  
(36.5 W x 201.6 H x 30.1 D mm)

