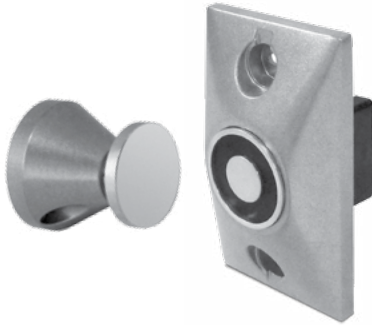


## EH Series Magnetic Door Holder & Releasing Device

Distributor  
Discount Code **V**



**SDC EH Series Magnetic Door Holders**, are designed to hold doors open and release the door by remote switch or fire life safety command center activation. Primary application includes holding and releasing of fire rated doors that are required to provide a barrier for fire and smoke in an emergency or the convenience of door closure by remote control.



### SPECIFICATIONS

<b>Materials</b>	Zinc alloy
<b>Voltage</b>	Standard dual voltage AC or DC inputs of 12&24V, 24&120V, 24&220V models
<b>Holding Force</b>	Typical holding force of 25-40 pounds; field selectable high holding force
<b>Mount</b>	Single or double floor, surface, flush, and recessed mount

<b>Total Projection</b>	Flush mount: 2-11/32" (60mm)
	Semi-Flush mount: 3-1/16" (78mm)
	Surface mount: 4-5/8" (117mm)
	Floor mount (single door): 5" (127mm) Floor mount (double door): 9-5/8" (244mm)
<b>Fasteners</b>	Hardware package, mounting bracket

### Performance Data

Model	Voltage	DC/mA	AC/mA	Terminals	LB.	KG.
<b>1224</b>	12V	40	38	C&L	30	13.6
	24V	40	36	C&H	30	13.6
<b>24120</b>	24V	20	19	C&L	40	18.1
	120V	—	20	C&H	35	15.8
<b>24220</b>	24V	20	19	C&L	40	18.1
	220V	—	15	C&H	25	11.3

### HIGH HOLDING FORCE / SPECIAL APPLICATIONS

Model	Voltage	DC/mA	AC/mA	Terminals	LB.	KG.
<b>1224</b>	24V	85	81	C&L	75	34.0
<b>24120</b>	120V	—	100	C&L	110	49.8

To obtain performance values in high holding force table above apply high listed voltage to low voltage terminals (C & L). NOTE: This configuration can only be applied to models 1224 & 24120.



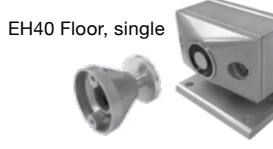
SPECIFY MODEL    LIST

Model	Description	Price
<b>EH10</b>	Flush Mount	<b>135.00</b>
<b>EH20</b>	Semi-Flush Mount	<b>104.00</b>
<b>EH30</b>	Surface Mount	<b>151.00</b>
<b>EH40</b>	Floor Mount, Single	<b>195.00</b>
<b>EH42</b>	Floor Mount, Double	<b>244.00</b>



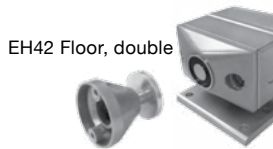
SPECIFY VOLTAGE    Add to List

Voltage	Description	Price
<b>1224</b>	12/24VAC/DC	<b>N/C</b>
<b>24120</b>	24VAC/DC/120VAC	<b>N/C</b>
<b>24220</b>	24VAC/DC/220VAC	<b>N/C</b>



SPECIFY FINISH    Add to List

Finish	Description	Price
<b>A</b>	Chrome Powder Coat	<b>N/C</b>
<b>P</b>	625 Chrome Plated	<b>P.O.A.</b>
<b>C</b>	605 Brass Plated	<b>21.00</b>



**Example: EH20 24120A**

**SDC**  
**SECURITY DOOR CONTROLS**  
 801 Avenida Acaso • Camarillo, CA 93012  
 Email: Service@sdcsecurity.com • www.sdcsecurity.com

Price List Effective February 1, 2017