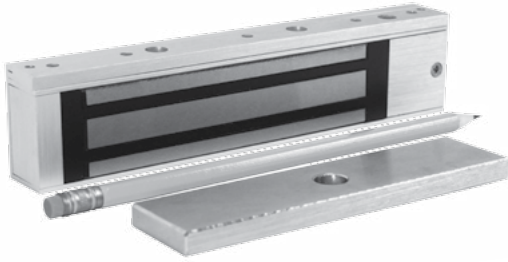


## Excel™ E300 Architectural Series Micro Cabinet Lock

Distributor Discount Code **GK LIST**



- Lock status
- Interlocking quick mount assembly
- Self drilling and tapping mounting screws and machine screws
- Adjustable mounting bracket
- Wire access chamber with terminal block
- Dual voltage 12/24VDC
- 628 Clear anodized aluminum

### MODEL

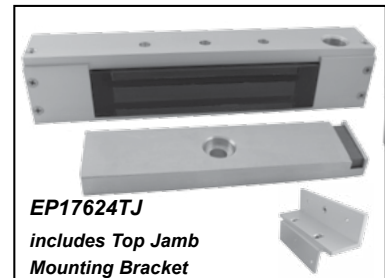
**E300** 300 lb / 136 kg with door status, locked status and LED **176.00**

## EP17624 Explosion Proof EMLock®

Distributor Discount Code **GK**



**EP17624**



**EP17624TJ**

*includes Top Jamb Mounting Bracket*

### SPECIFICATIONS

**Holding Force** 600 lbs  
**Input Voltage** 24 VDC  
**Current** 250mA @ 24VDC

### DIMENSIONS

**EP17624 lock** 10.5"L x 2"H x 1.75"D  
**EP17624TJ lock** 10.5"L x 2.25"H x 1.75"D  
**Armature** 7.125"L x 1.75"H x 0.75"D  
**Door Status Sensor** SPDT contact, 100mA max. @ 30VDC max

MODEL	DESCRIPTION	LIST
<b>EP17624</b>	Single Explosion Proof Magnetic Lock, side conduit location, 628 Aluminum, for use on push-side of door, conduit on side block	<b>2484.00</b>
<b>EP17624TJ</b>	Single Explosion Proof Magnetic Lock, top conduit location, 628 Aluminum, includes Top Jamb mounting bracket, for use on pull-side of door, conduit on top	<b>2588.00</b>

This unit is intended to be used in the following atmospheres: Acetone, Ammonium Hydroxide, ATSM fuel C, Benzene, Methyl-Ethylketone, Diethyl-Ether, 2-Nitropropane, Ethyl-Acetate, Furfural, Normal Hexane, Methyl Alcohol. Operating temperature for the magnetic lock will not exceed 185° F (85° C). Maximum ambient temperature is not to exceed 104° F (40° C). For supply connections, use a suitable wire with a minimum insulation temperature rating of 167° F (75° C). This unit must be connected to a NEC (National Electric Code, NFPA 70) Class 2 Supply Circuit rated for 24 VDC with a minimum current output of 0.5 amperes and output power of 12 watts. A UL Listed SDC 600 Series Power Controller is recommended.

## 1591 MORTISE EMLock® for Sliding Doors



Distributor Discount Code **GK LIST**



**1591**

**Holding Power 850lbs.**  
**Selectable Voltage:** 12VDC @ 700 mA, 24VDC @ 350 mA  
**Finish:** U 630 Stainless Steel  
**Dimensions:** 10"L x 1-7/16"H x 1-1/4"D

### MODEL

**1591U** Single EMLock® for sliding doors **363.00**

### ACCESSORIES

Add to List

**LAB** Surface mount armature angle bracket for 1591 on sliding doors **57.00**

**AMP** Armature mounting plate for leading edge of door **47.00**

**DPS** Door position sensor for 1591 EMLock® **57.00**

**BR64XL** Rectifier for less leads **26.00**