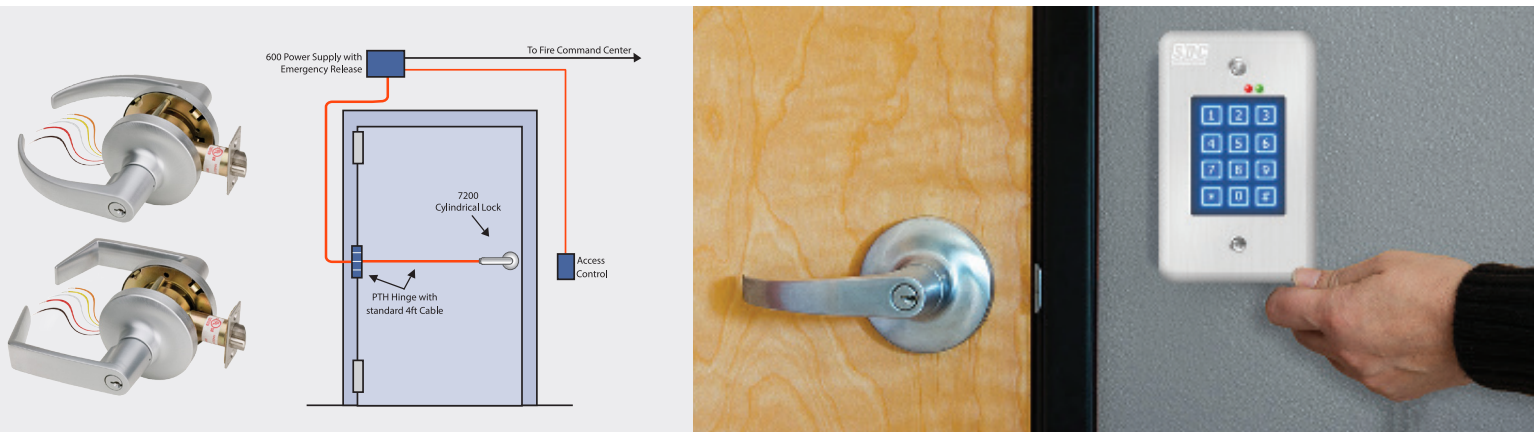


ELECTRIFIED COMPLIANCE FOR ACCESS CONTROL



Compatible Access & Egress Solutions

Electrified Cylindrical - Eclipse Style Lever

Z7252EQ - Failsafe

Z7250EQ - Failsecure

- » Rex Output Included
- » Dual Voltage, 12/24VDC
- » "C" Keyway, keys included



Electrified Cylindrical - Galaxy Style Lever

Z7252GQ - Failsafe

Z7250GQ - Failsecure

- » Rex Output Included
- » Dual Voltage, 12/24VDC
- » "C" Keyway, keys included



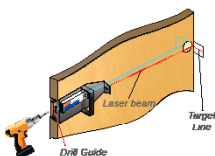
Keypad - 918U

- » 500 Users, 1-6 digit PIN codes
- » LED Status: Access, lockout
- » Timed anti-passback
- » Keypad tamper lockout
- » Request-to-Exit/Enter input



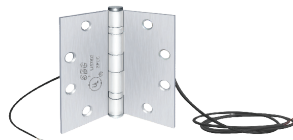
Core Drill Fixture Kit - 7000DGK

- » Laser Guide
- » Includes 6" Pilot Drill Bit
- » Evacuator 50" Raceway Drill Bit
- » Door Wedge, Wire Pull, Carry Case



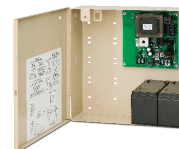
Power Transfer Hinge - PTH4Q

- » 4 1/2" x 4 1/2" Size
- » 4 Wire, 626 Finish
- » 5ft. Cable



Output Designed for Locking Hardware - 602RF

- » Field selectable 12 or 24VDC, regulated and filtered
- » Emergency input release
- » Optional Battery Back-up RB12V4



The lock behind your system

(800) 413-8783 | WWW.SDCSECURITY.COM