

# Excel™ Series

## Value Engineered Access Hardware



Excel™ E1200

Economically Priced Alternative to Low Cost Imports Quality and Flexibility for Commercial Applications. The Excel™ product line is designed for system integrators, distributors, installers and building owners presently using low cost import or private label brand access control hardware.

### MAGNETIC LOCKS

The value priced Excel™ Architectural Series full featured magnetic locks are easier to install and provide superior, less obtrusive appearance compared to stainless steel epoxy sealed magnetic locks. Full monitoring is standard. The quick mount assembly reduces installation time compared to epoxy sealed magnetic locks.

The value priced Excel™ Commercial Series full featured magnetic lock is made of an epoxy sealed satin stainless steel housing and utilizes the same mounting template as major competitive brands. Full monitoring is standard. Recommended for interior doors or outdoor gate applications.

### ELECTRIC STRIKES

Value Priced Excel™ 15 Series electric strikes are for centerline latch entry applications for locksets with up to 3/4" latchbolts.

The Value Price Excel™ 25 Series are compatible with up to 5/8" latchbolts. Standard features include a latch status output and 12/24V AC/DC input.

### MODULAR POWER SUPPLY/CHARGER

The value priced Excel™ 621 Modular Power Supply is a full featured, 1 Amp Class 2 Power Supply available in 4 different configurations.

Patent 5,376,910



Excel™ E600



Excel™ E300



Excel™ E6200



Excel™ 15 & 25 Strike



Spacesaver® Bolt Lock



Exit Switch Bar



Exit Switches



Power Supplies



**EXCEL™ E6200 - MAGNETIC LOCK**



**EXCEL™ E1200 - MAGNETIC LOCK**

## FEATURES

- Retrofits Securitron M62 and Locknetics 70 locks
- Magnetic Bond Sensor indicates door locked with full holding power
- Door Status indicates door open or closed
- Epoxy sealed electronics, tamper resistant and weatherized for indoor and outdoor use
- Stainless steel machine screws and blind nuts
- 10 ft jacketed, stranded conductor cable
- Dual voltage 12/24VDC
- Architectural stainless steel housing, US32/630

## APPLICATION

**Security Access Control, & Mantraps, Indoor/Outdoor**  
1200 lb / 545 kg holding force magnetic lock for exterior, perimeter and interior door security and access control. Magnetic bond sensor and door status outputs are included for remote monitoring, mantraps and system application needs.

## SPECIFICATIONS

### Mechanical Specifications

<b>Holding Force</b>	1200 lbs / 545 kg
<b>Housing</b>	Stainless steel epoxy filled housing. All internal components sealed and weatherized
<b>Lock</b>	8" L x 3" H x 1.764" D
<b>Armature</b>	6" L x .8125" H x 2.6875" D

### Electrical Specifications

<b>Wiring</b>	10' jacketed, stranded conductor cable for power input and status outputs
<b>Circuitry</b>	Voltage and current spike protection and instant release anti-residual magnetism circuitry
<b>Voltage</b>	12/24VDC, field selectable
<b>Magnetic Bond Sensor</b>	SPDT, 250 mA @ 30VDC
<b>Door Status Contact</b>	SPDT, 250 mA @ 30VDC

## FEATURES

- Door status, lock status and Bi-color LED
- Interlocking quick mount assembly
- Adjustable mounting bracket with choice of self drilling and tapping mounting screws or machine screws
- Wire access chamber with terminal block
- Dual voltage 12/24VDC
- 628 Clear anodized aluminum

## APPLICATION

**Security Access Control & Mantraps**  
1200 lb / 545 kg holding force magnetic lock for perimeter and interior door security and access control. Door and lock status outputs included for remote monitoring, mantraps and system application needs.

## SPECIFICATIONS

### Mechanical Specifications

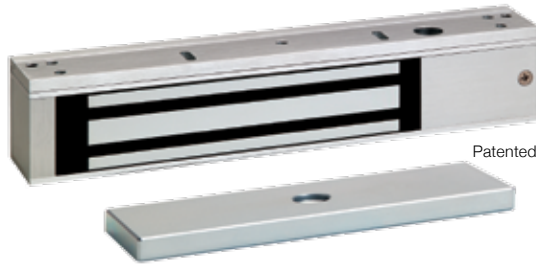
<b>Holding Force</b>	1200 lbs / 545 kg
<b>Lock</b>	10.5" L x 2.875" H x 1.625" D
<b>Armature</b>	7.3125" L x 2.375" H x .625" D

### Electrical Specifications

<b>Circuitry and Wiring</b>	PC board with voltage and current spike protection, instant release anti-residual magnetism circuit, terminal block for power input and status outputs
<b>Voltage</b>	12/24VDC, field selectable
<b>Current</b>	500 mA @ 12VDC; 250 mA @ 24VDC
<b>Lock Status Contact</b>	SPDT, 2 Amp @ 30VDC
<b>Door Status Contact</b>	SPDT, 250 mA @ 30VDC



ANSI/BHMA-A156.23  
Grade 1 Compliant



**EXCEL™ E600 - MAGNETIC LOCK**

### FEATURES

- Door status, lock status and Bi-color LED
- Interlocking quick mount assembly
- Adjustable mounting bracket with choice of self drilling and tapping mounting screws or machine screws
- Wire access chamber with terminal block
- Dual voltage 12/24VDC
- 628 Clear anodized aluminum

### APPLICATION

**Traffic Control, Air-Locks & Communicating Bathrooms** 600 lb / 272 kg holding force magnetic lock for interior door traffic control where physical attack is not a concern. Door and lock status outputs included for remote monitoring, mantraps and system application needs.

### SPECIFICATIONS

#### Mechanical Specifications

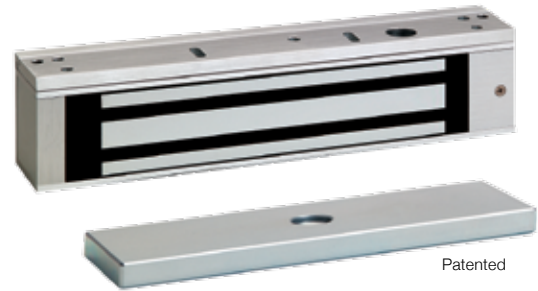
<b>Holding Force</b>	600 lbs / 272 kg
<b>Lock</b>	9.875" L x 2" H x 1.125" D
<b>Armature</b>	7.9375" L x 1.5" H x .5" D

#### Electrical Specifications

<b>Circuitry and Wiring</b>	PC board with voltage and current spike protection, instant release anti-residual magnetism circuit, terminal block for power input and status outputs
<b>Voltage</b>	12/24VDC, field selectable
<b>Current</b>	500 mA @ 12VDC; 250 mA @ 24VDC
<b>Lock Status Contact</b>	SPDT, 2 Amp @ 30VDC
<b>Door Status Contact</b>	SPDT, 250 mA @ 30VDC



ANSI/BHMA-A156.23  
Grade 1 Compliant



**EXCEL™ E300 - MAGNETIC LOCK**

### FEATURES

- Lock status
- Interlocking quick mount assembly
- Adjustable mounting bracket with choice of self drilling and tapping mounting screws or machine screws
- Wire access chamber with terminal block
- Dual voltage 12/24VDC
- 628 Clear anodized aluminum

### APPLICATION

**Communicating Bathrooms, Cabinets, Display Cases** 300 lb / 136 kg holding force magnetic lock for cabinets and display cases. Lock status output included for remote monitoring and system application needs.

### SPECIFICATIONS

#### Mechanical Specifications

<b>Holding Force</b>	300 Lbs / 136 Kg
<b>Lock</b>	7" L x 1.625" H x .875" D
<b>Armature</b>	5.125" L x 1.75" H x .625" D

#### Electrical Specifications

<b>Circuitry and Wiring</b>	PC board with voltage and current spike protection, instant release anti-residual magnetism circuit, terminal block for power input and status output
<b>Voltage</b>	Dual 12/24VDC, field selectable Terminal block connections
<b>Current</b>	360 mA @ 12VDC; 180 mA @ 24VDC
<b>Lock Status Contact</b>	SPDT, 2 Amp @ 30VDC



## HOW TO ORDER

### 1| SPECIFY MODEL

**E600** 600 lb/272 kg with door status, locked status & LED

**E300** 300 lb/136 kg with locked status

**E1200** 1200 lb/545 kg with door status, locked status & LED

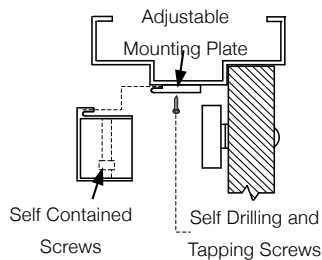
**E6200** 1200 lb/545kg with SPDT door status, SPDT magnetic bond sensor

### 2| SPECIFY FINISH : **628** Clear Anodized Aluminum (Standard)

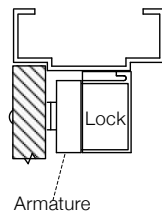


## ACCESSORIES

### QUICK MOUNT INTERLOCKING ASSEMBLY



### OUTSWING

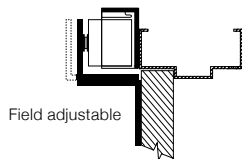


### TOP JAMB MOUNTING KIT FOR INSWING DOORS



**E12Z** Top Jamb Kit for **E1200**

**E6Z** Top Jamb Kit for **E600**

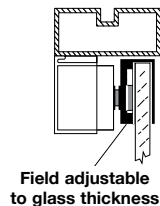


### GLASS DOOR ARMATURE MOUNTING KIT



**E12U** Glass Door Kit for **E1200**

**E6U** Glass Door Kit for **E600**



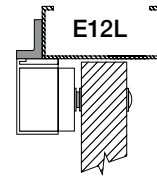
### E SERIES ANGLE BRACKETS

Used for the extension of a narrow frame header mounting surface, the bracket provides additional surface area for proper lock mounting

#### **E12L** E1200 Angle Bracket

May be Field Cut for Use with E600

Inches: 10-1/2" L x 1-1/2" H x 3/4" D



### E SERIES STOP FILLER PLATES

Used where the frame stop does not provide enough mounting surface, the filler bar provides enough additional surface area for proper lock mounting.

#### **E12F01** E1200 Stop Filler Plates

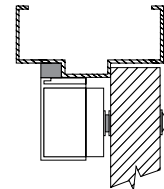
**E600:** Field cut for **E600**

Inches: 1/2" H x 3/4" D x 10-1/2" L

#### **E12F02** E1200 Stop Filler Plates.

**E600:** Field cut for **E600**

Inches: 1/2" H x 3/4" D x 10-1/2" L



**E12F01**  
**E12F02**

## EXCEL™ 15 SERIES ELECTRIC STRIKE



### MODELS

- 15-4S12U** Failsecure, 12VDC Continuous Duty  
12VAC, Intermittent Duty, Audible Buzz
- 15-4S24U** Failsecure, 24VDC Continuous Duty
- 15-4S12U** Failsafe, 12VDC Continuous Duty
- 15-4S24U** Failsafe, 24VDC Continuous Duty



### FEATURES

- For aluminum and hollow metal frames
- For use with 5/8" latchbolt, or up to 3/4" latchbolt with 1/8" door gap
- All stainless steel parts with durable diecast body for corrosion resistance
- Screw terminal input, no wire nuts required.
- Mounting tabs for aluminum and metal frames
- 630 Satin stainless steel face plate
- ANSI A156.31 Grade 2 compliant



### SPECIFICATIONS

<b>Voltage</b>	150 mA @ 24VDC 200 mA @ 12VDC
<b>Dimensions</b>	1-1/4" W x 4-7/8" H x 1-1/2" D

## EXCEL™ 25 SERIES ELECTRIC STRIKE



### MODEL

- 25-4U** Reversible Failsafe/Failsecure, 12/24V AC/DC  
12/24VDC, Continuous Duty, Silent  
12/24VAC, Intermittent Duty, Audible Buzz



### FEATURES

- For aluminum and hollow metal frames
- For 1/2" latch or 5/8" latch with 1/8" door gap
- Latch status output standard
- Field reversible failsafe/failsecure operation
- All stainless steel parts with durable diecast body for corrosion resistance
- Mounting tabs for aluminum and metal frames
- 630 Stainless steel standard finish
- ANSI A156.31 compliant



### SPECIFICATIONS

<b>Dual Voltage</b>	200/100 mA @ 12/24VDC
<b>Latch Status</b>	SPDT, 3 Amp @ 30VDC
<b>Dimensions</b>	1-1/4" W x 4-7/8" H x 1-1/2" D



### HOW TO ORDER

#### 1| SPECIFY MODEL

- 15-4F12U** Failsafe, 12VDC
- 15-4F24U** Failsafe, 24VDC
- 15-4S12U** Failsecure, 12VDC
- 15-4S24U** Failsecure, 24VDC

*Not recommended for wood application*

#### 2| SPECIFY FINISH

- 630** Stainless Steel (standard)

#### 3| SPECIFY OPTIONS (OPTIONAL)

- RMB** Buzzer 12/24V AC/DC operation
- BR64XL** Rectifier for AC operation



### HOW TO ORDER

#### 1| SPECIFY MODEL

- 25-4U** 4-7/8" Square Corner  
*Not recommended for wood application*

#### 2| SPECIFY FINISH

- 630** Stainless Steel (standard)

#### 3| SPECIFY OPTIONS (OPTIONAL)

- RMB** Buzzer 12/24V AC/DC operation
- BR64XL** Rectifier for AC operation





## SPACESAVER® BOLT LOCKS

### MODELS

- FS23MIV** Dual Failsafe
- 1091AIV** Failsafe
- 1091ADLIV** Dead Locking, Failsafe
- 1291AHV** Failsecure
- 1490AIV** Fits 1-1/2" Frame (non UL), Failsafe
- 2490AHV** Failsecure, Fits 1-1/2" frame (non-UL)

### FEATURES

- Fits 1.75" (44.5 mm) narrow frames
- Auto relock switch adjustable for wide door gap
- Dual Voltage, 900/450 mA @ 12/24VDC
- 628 anodized aluminum finish

### SPECIFICATIONS

<b>Dual Voltage Coil</b>	900/450mA @ 12/24 VDC 1290/2490: 900/450mA @ 12/24 VDC
<b>Dimensions</b>	8" L x 1-1/2" W x 1-5/8" D



## EXIT SWITCH BAR

### MODELS

- Exit Bar for Magnetic Lock Release**
- MSB550V** 36" Aluminum exit switch bar
- MSB550Y** 36" Black anodized exit switch bar
- MSB550S** 36" Bright stainless steel exit switch bar
- MSB550U** 36" Brushed stainless steel exit switch bar

### FEATURES

- 1/8" Total bar movement for mechanical switch actuation

### SPECIFICATIONS

#### Mechanical Specifications

<b>Height</b>	2-3/8"
<b>Projection (Depth)</b>	1-7/8"
<b>Door Width</b>	36" (Standard) 42" May be field cut 48" May be field cut

#### Electrical Specifications

<b>Contacts</b>	2 SPT Contacts Add "2" for 2nd mechanical switch for dual-failsafe redundant operation, alarm shunt, or monitoring output
<b>Door Status Contact</b>	SPDT, 250 mA @ 30VDC

## HOW TO ORDER

### 1| SPECIFY MODEL

- FS23MIV** Dual Failsafe
- 1091AIV** Failsafe
- 1091ADLIV** Dead Locking, Failsafe
- 1291AHV** Failsecure
- 1490AIV** Fits 1-1/2" Frame (non UL), Failsafe
- 2490AHV** Failsecure, Fits 1-1/2" frame (non-UL)

### 2| SPECIFY FINISH

- V** 628 Aluminum (Standard)
- Y** 355 Black
- C** 605 Bright Brass
- D** 606 Dull Brass
- F** 611 Bright Bronze
- G** 612 Satin Bronze
- H** 613 Oil Rubbed Bronze
- P** 625 Bright Chrome
- Q** 626 Dull Chrome
- U** 630 Dull Stainless Steel

### 3| SPECIFY OPTIONS (OPTIONAL)

- B** Bolt position sensor, SPDT
- D** Door position sensor, SPDT
- BR64XL** Rectifier for AC operation
- PR1000** Power Regulator for 1090 Series

 • Auxiliary Locks  
• UL 10C Positive Pressure Compliant

## HOW TO ORDER

### 1| SPECIFY MODEL

- MSB550V** 36" Aluminum exit switch bar
- MSB550Y** 36" Black anodized exit switch bar
- MSB550S** 36" Bright stainless steel exit switch bar
- MSB550U** 36" Brushed stainless steel exit switch bar

### 2| SPECIFY WIDTH

- 36" is Standard
- Bars for Wide Doors:**
- 42** Bar for 42" Door
- 48** Bar for 48" Door

### ACCESSORIES

- PT-2U** Power Transfer Loop



**CSFM Listed**  
Exit Door Accessories



**Listed 4J82**

- Access Control Systems Unit
- Burglary Resistant Electronic Locking Mechanism
- Releasing Device Accessory



## ACCESS CONTROL POWER SUPPLY/CHARGER

- 2 Separate outputs for lock and access control.
- On-board access control/REX input controls lock power output.
- Fire panel input shuts down lock power output only, without interrupting access control power output.

## MODELS

- 621PJ** Power supply module and cabinet, door mount LED system status indicator. UL Listed 24VAC, 40 VA plug-in transformer
- 621J** Power supply module, cabinet with door mounted LED system status indicator
- 621P** Power supply module, retrofit mounting hardware includes flush mount standoffs or Velcro. UL Listed 24VAC, 40 VA plug-in transformer
- 621B** Power supply module only, retrofit mounting hardware includes flush mount standoffs or Velcro
- 621P-UME** Power supply module, retrofit mounting hardware includes flush mount standoffs or Velcro. UL Listed 24VAC, 40 VA plug-in transformer, plus Universal Module Enclosure (UME)

## FEATURES

- Field selectable 12 or 24VDC
- 1 Amp maximum, Class 2 Output:
  - ▶ 1 power limited switched output
  - ▶ 1 power limited auxiliary output
- Two control inputs:
  - ▶ 1 trigger input, normally open (NO)
  - ▶ 1 supervised emergency release input, latching with reset or non-latching
- Short circuit and thermal overload protection
- Battery charger output
- Automatically switched to battery backup when AC fails
- Board mounted LED for AC input, DC output and battery back-up status

## SPECIFICATIONS

### Power Supply Module

<b>Input</b>	24VAC, 40VA required
<b>Output</b>	1 Amp @ 12 or 24VDC, Filtered and regulated
<b>Battery Charger</b>	150mA @ 12VDC
<b>Module Dimensions</b>	4" W x 3" H x 1-5/8" D
<b>Metal Cabinet</b>	7-3/4" W x 8-3/8" H x 3-5/8" D

## HOW TO ORDER

### 1| SPECIFY MODEL

- 621PJ** Power supply module and cabinet, door mount LED system status indicator. UL Listed 24VAC, 40 VA plug-in transformer
- 621J** Power supply module, cabinet with door mounted LED system status indicator
- 621P** Power supply module, retrofit mounting hardware includes flush mount standoffs or Velcro. UL Listed 24VAC, 40 VA plug-in transformer
- 621B** Power supply module only, retrofit mounting hardware includes flush mount standoffs or Velcro
- 621P-UME** Power supply module, retrofit mounting hardware includes flush mount standoffs or Velcro. UL Listed 24VAC, 40 VA plug-in transformer, plus Universal Module Enclosure (UME)

## ACCESSORIES

- RB12V4** 12v/4Ah Battery. 621PJ accommodates two.
- RB12V7** 12v/7Ah Battery. 621PJ accommodates one.



## EXIT SWITCHES

### MODELS

#### English Sign

**422U** 1 Gang, Wall Mount Exit Switch  
2" (50 mm) Button

**412NU** Narrow Frame Mount Exit Switch  
1-3/4" x 1" (44.5 x 25.4 mm) Button

#### Spanish Sign

**422SU** 1 Gang, Wall Mount Exit Switch  
2" (50 mm) Button

**412NSU** Narrow Frame Mount Exit Switch  
1-3/4" x 1" (44.5 x 25.4 mm) Button

### FEATURES

- Illuminated Green and RED lenses included
- Large, conspicuous and easy to activate
- Always illuminated or provides visual secure/unlocked status when wired to lock power or lock status outputs.
- High impact resistance stands up to abuse
- "PUSH TO EXIT" sign complies with all USA fire and building codes



## TP2440 PLUG-IN TRANSFORMER

### SPECIFICATIONS

<b>Input</b>	115VAC
<b>Output</b>	Fused, 1.65 Amp (40VA) @ 24VAC
<b>Screw Terminal</b>	Wire Connection
<b>UL Listed</b>	Class 2

### ACCESSORIES

**BR64XL** Full Wave Bridge Rectifier  
Converts AC output to DC