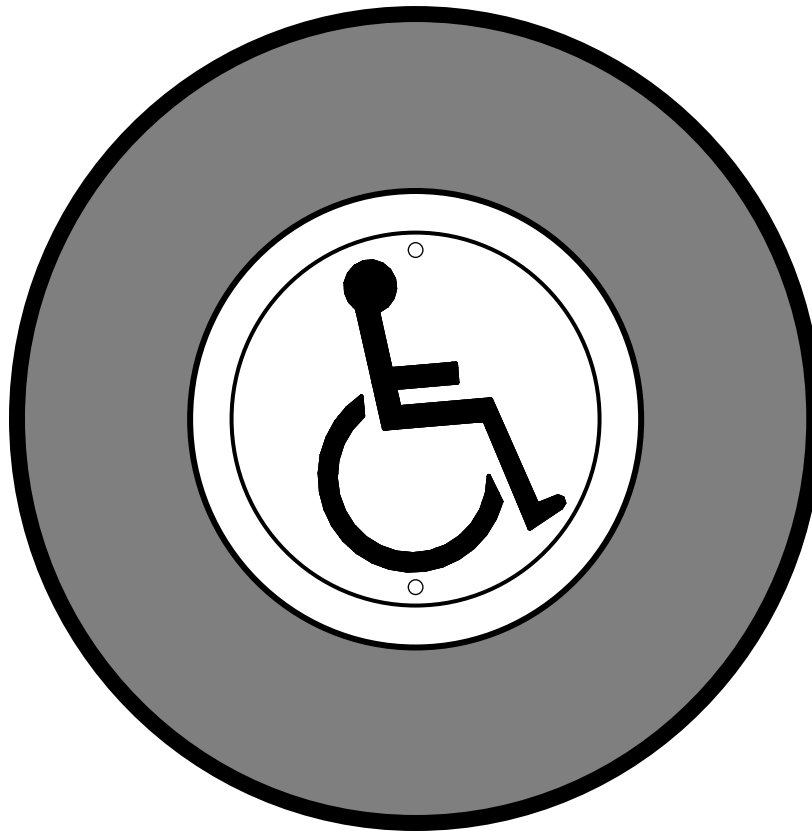
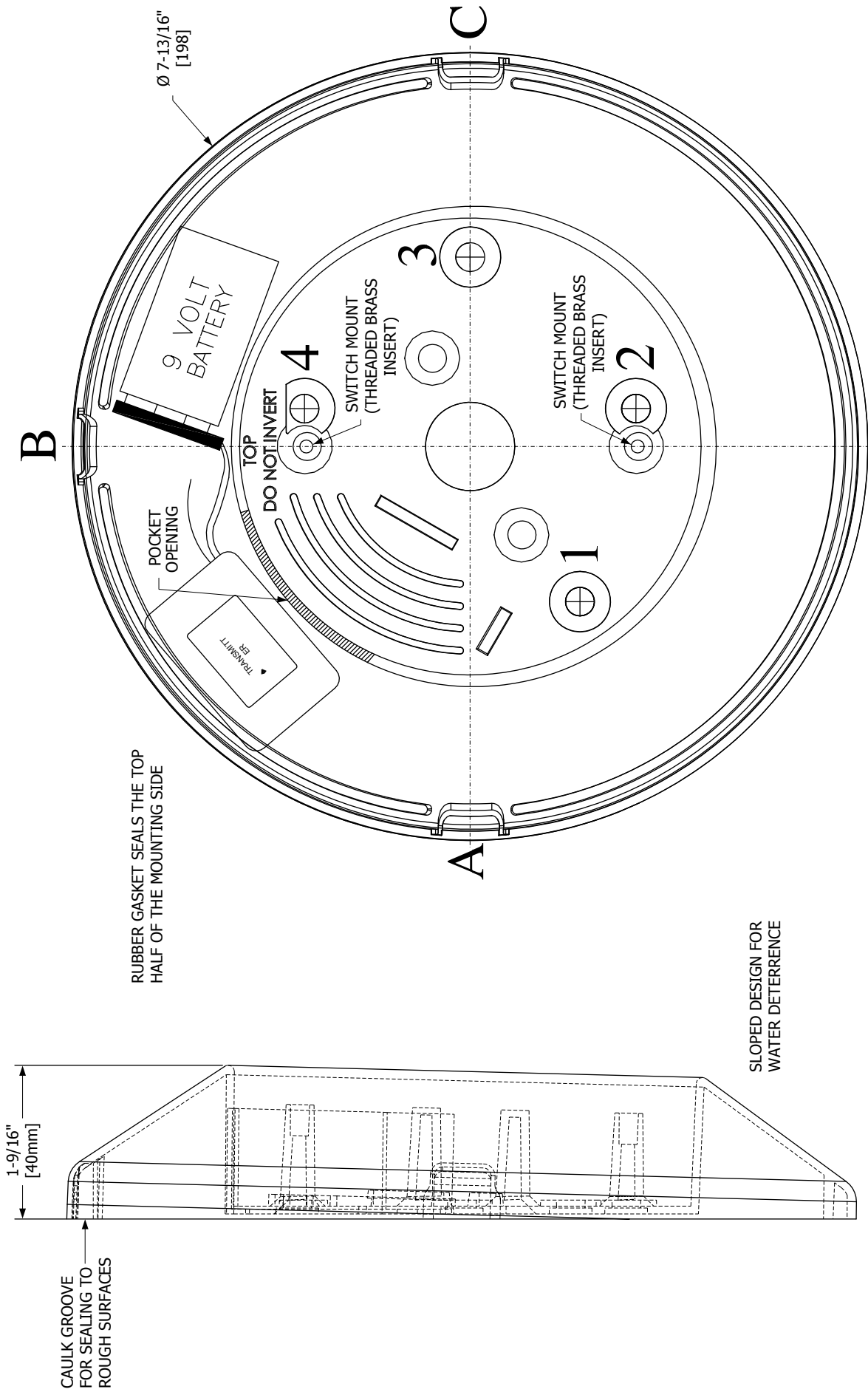


INSTALLATION INSTRUCTIONS 480-4RRB RECESSED MOUNTING BOX ROUND SWITCH ESCUTCHEON



- Designed for 4-1/2" inch round switch for wireless or hard-wired applications
- Stocked in matte black finish
- ABS material allows radio frequency transmission without interference
- Molded pocket for transmitter and battery (fits most standard brands)
- Vandal resistant design
- Beveled design to avoid catching clothing etc.
- May be mounted directly to a single and double gang flush electrical boxes
- May be mounted near floor for activation by wheelchairs (mounting template supplied)
- Perimeter cutout tabs for hard-wiring applications
- Channel in perimeter allows caulking to rough surfaces
- Rubber seal on reverse side reduces moisture infiltration
- Custom colors available, or can be painted in the field
- Request a quote for custom colors



- Cutout tabs for hard-wiring applications located at A, B or C
- Pocket for transmitter and battery as shown
- Anchor to mounting surface at 1, 2, 3 and 4
- Mount switch directly onto brass inserts with (2) 6-32 screws