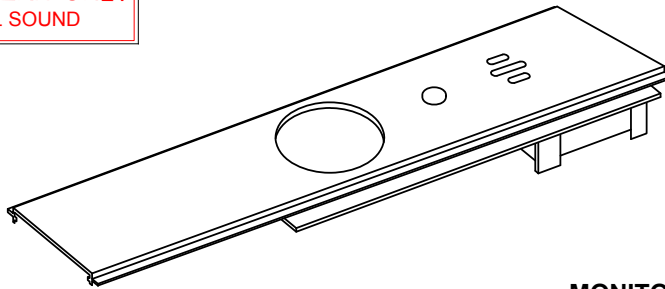


# SDC Security Door Controls

801 Avenida Acaso, Camarillo, Ca. 93012 • (805) 494-0622 •  
www.sdcsecurity.com • E-mail: service@sdsecurity.com

## ALARM BOARD INSTALLATION INSTRUCTIONS

EMERGENCY EXIT ONLY  
ALARM WILL SOUND



### FEATURES

- LED (field selectable Active or Off)
- Bypass – No LED
- Armed – Blinks every 4 seconds (GREEN when armed, RED when in alarm mode)
- Low battery Alert – Siren will beep every 45 seconds
- Arming Delay - 15 or 60 second arming delay
- Field selectable alarm modes include:
  - Continuous alarm with manual key reset
  - Alarm automatically rearms 2 minutes after door closes and may be retriggered.
  - May be manually rearmed by key before automatically rearmed.

### OPTIONS:

- AR6 – 6 or 10 minute alarm with auto rearm and manual key reset.
- AR20 – 20 minute alarm with auto rearm and manual key reset.
- AD1 – 1 second arming delay
- B – Hard wire cable with monitoring.

### SPECIFICATIONS

- Input Voltage – 12/24vdc @ 20ma.
- Alarm output – 1 amp SPDT form “C” relay contact
- Remote Inhibit – N/O dry contact
- Siren Level db – @90db

### MONITOR LED OPERATION

#### FLASHING GREEN – Arming Delay Mode

The device will arm after the **delay on arm** time expires.

#### BLINKING GREEN – Armed Mode

The unit is armed. Pressing on the push pad will sound the alarm.

#### RED SOLID – Alarm Mode

The alarm has been activated. The alarm will sound.

#### BLINKING RED – Re-Armed Mode.

The has been triggered at least once and has automatically reset and has returned to the armed mode. Pressing on the push pad bar will sound the alarm Manually resetting the device will clear this mode.

#### FLASHING ORANGE Low Battery.

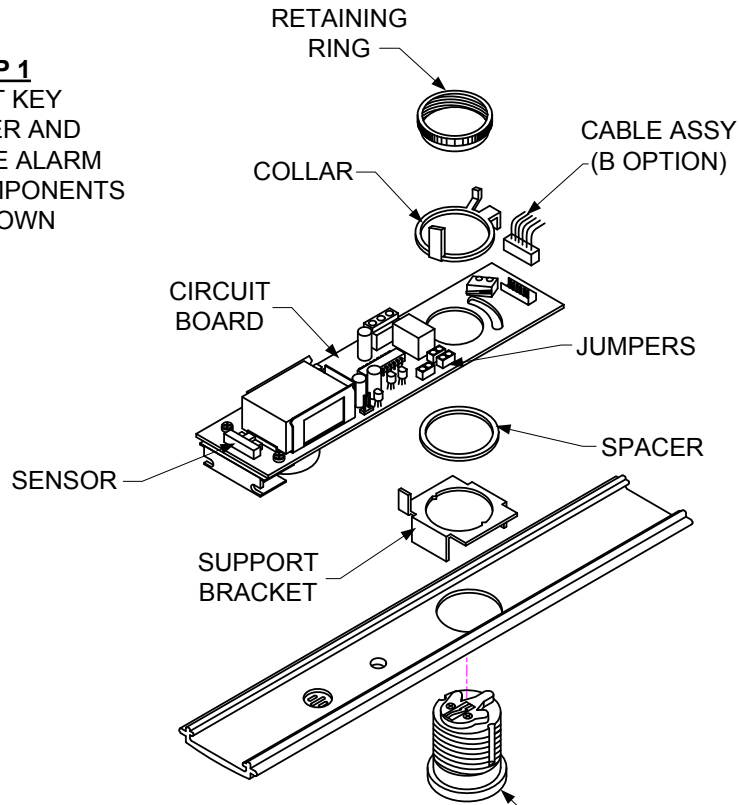
You will also hear an intermittent beep.

FACTORY DEFAULT IS SET TO ALL ON POSITION

JUMPER	FUNCTION	JUMPER POSITIONS	
		<input checked="" type="checkbox"/> ON	<input type="checkbox"/> OFF
J1	ALARM TIMER	2 MIN	6 MIN
J2	RESET MODE	MANUAL	AUTO
J3	DELAY ON ARM TIME	15 SEC	60 SEC
J4	MONITOR LED	ACTIVE	NOT ACTIVE

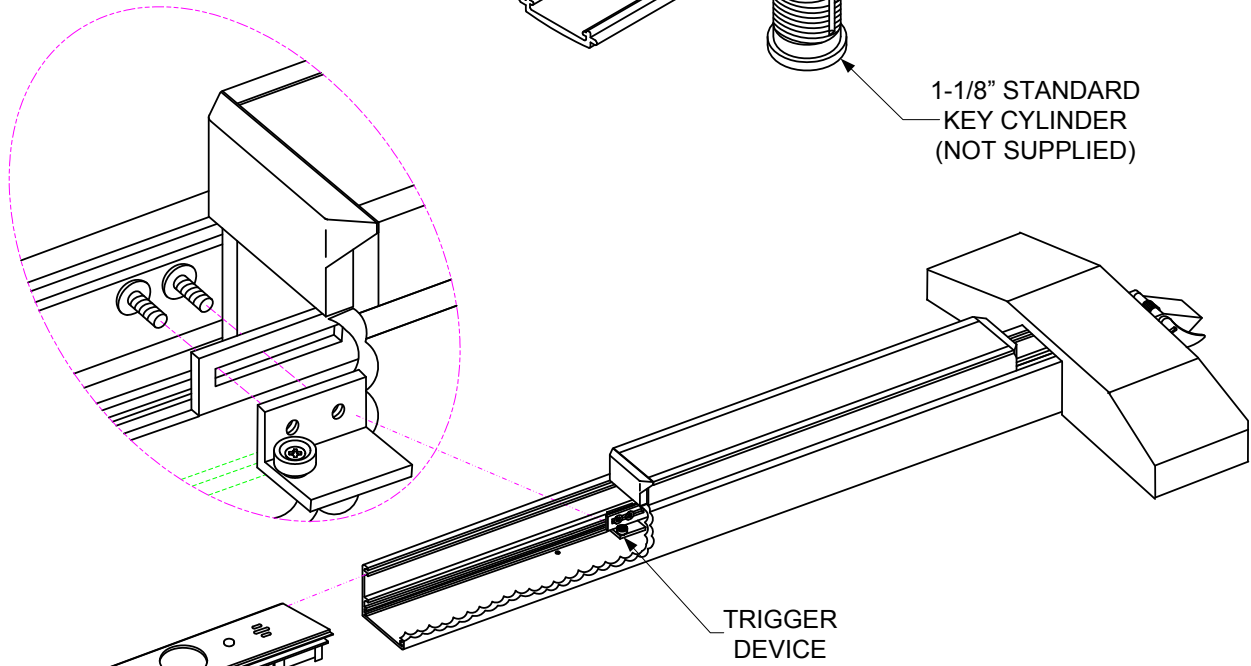
Any suggestions or comments to this instruction or product are welcome. Please contact us through our website or email engineer@sdsecurity.com

**STEP 1**  
 INSERT KEY  
 CYLINDER AND  
 ASSEMBLE ALARM  
 BOARD COMPONENTS  
 AS SHOWN



BLUE - INHIBIT  
 YELLOW - N/O  
 ORANGE - N/C  
 WHITE - COM  
 RED - (+)  
 BLACK - (-)

**STEP 2**  
 (Alarm Board Kit Only)  
 ATTACH TRIGGER  
 DEVICE AS SHOWN



INSTALL WITH SENSOR ON ALARM BOARD  
 TOWARD THE TRIGGER DEVICE

**STEP 3**  
 SLIDE ALARM BOARD  
 ASSEMBLY INTO EXIT  
 DEVICE

**STEP 4**  
 MOUNT SIGN  
 ON DOOR

**EMERGENCY EXIT ONLY**  
 ALARM WILL SOUND