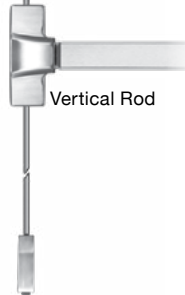


- LED (field selectable Active or Off) Bypass - No LED
- Armed - Blinks every 4 seconds (Green when armed, Red when in alarm mode)
- Low Battery Alert – Siren will beep every 45 seconds.
- 15 or 60 second arming delay
- Remote status output
- Field selectable alarm modes include:
  - › Continuous alarm with manual key reset
  - › Alarm automatically rearms 2 minutes after door closes and may be retriggered. May be manually rearmed by key before automatically rearmed.



Specify Trim for S61 and S62 - See page 35



**SPECIFY DEVICE** LIST

<b>S61</b>	Rim mount exit device	<b>640.00</b>
<b>S62</b>	Surface vertical	<b>960.00</b>
<b>S63</b>	Mortise [03 Lever Trim included] - specify: <b>EE/GE</b> Eclipse Escutcheon/Galaxy Escutcheon	<b>1,174.00</b>

**SPECIFY FUNCTION** Add to List

<b>01</b>	Exit Only	<b>03</b>	Nightlatch	<b>N/C</b>
-----------	-----------	-----------	------------	------------

**SPECIFY PANIC OR FIRE RATED**

<b>P</b>	Panic	<b>N/C</b>	<b>F</b>	Fire	<b>118.00</b>
----------	-------	------------	----------	------	---------------

**SPECIFY HAND (Mortise Only)**

<b>RR</b>	Right hand reverse bevel, RHRB	<b>LR</b>	Left hand reverse bevel, LHRB	<b>N/C</b>
-----------	--------------------------------	-----------	-------------------------------	------------

**SPECIFY FINISH**

<b>U</b>	630 Dull Stainless Steel	<b>N/C</b>
----------	--------------------------	------------

**SPECIFY LENGTH**

<b>36</b>	For 36" Door	<b>N/C</b>	<b>42</b>	For 42" Door	<b>22.00</b>	<b>48</b>	For 48" Door	<b>44.00</b>
-----------	--------------	------------	-----------	--------------	--------------	-----------	--------------	--------------

**SPECIFY EXIT ALARM**

<b>A</b>	Exit Alarm, 9V Battery Powered	<b>427.00</b>
<b>B</b>	Exit Alarm with 12/24V AC/DC input (9V battery provides power backup)	<b>470.00</b>

**Options**

<b>AD1</b>	1 second arming delay	<b>N/C</b>
------------	-----------------------	------------

**SPECIFY TRIM (Mortise Only)**

<b>EE</b>	Eclipse Escutcheon	<b>GE</b>	Galaxy Escutcheon	<b>N/C</b>
-----------	--------------------	-----------	-------------------	------------

**TRIM OPTIONS (NOTE: use Clover Cam for S63)** Add to List

	<b>CYL-6KDQ</b>	6 pin, 1.125" mortise cylinder, keyed different, dull chrome	<b>33.00</b>
	<b>CYL-6KAQ</b>	6 pin, 1.125" mortise cylinder, keyed alike, dull chrome	<b>33.00</b>
	<b>RIM-CYL-KA</b>	Rim Cylinder for 03 Function, keyed alike - see page 39 for more info	<b>36.00</b>

**SPECIFY POWER TRANSFER (For the entire line of Power Transfer, see page 90 and page 91)** LIST

<b>PTM-2AL</b>	Two (2) Conductor Power Transfer Device: Two (2) 18 Ga. wires 5 Amp @ 12/24V AC/DV, Aluminum Powder Coat, US28 equivalent	<b>383.00</b>
----------------	--	---------------

<b>PTH-4Q</b>	Four (4) Conductor Power Transfer Hinge 1 Amp @ 12/24V per pair, 4.5" x 4.5" standard weight, 626 Dull Chrome	<b>161.00</b>
---------------	--	---------------

**SPECIFY POWER SUPPLY (For the entire line of Power Supplies, see page 93)** LIST

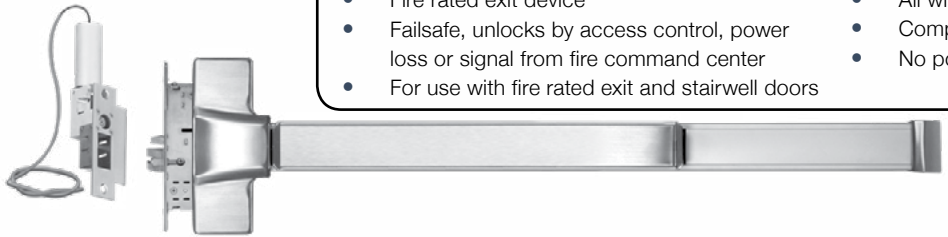
<b>602RF</b>	1 Amp, class 2 output, 12" W x 12" H x 3.75" D box	<b>279.00</b>
<b>631RF</b>	1.5 Amp, class 2 output, 12" W x 12" H x 3.75" D box	<b>374.00</b>



### Electric Frame Actuator Controlled Exit Device

#### FEATURES

- Fire rated exit device
- Failsafe, unlocks by access control, power loss or signal from fire command center
- For use with fire rated exit and stairwell doors
- Door stays latched even when unlocked
- All wiring maintained in the strike jamb
- Complies with all national codes
- No power transfer hinge



See SDC power supplies with fire command interface for emergency release of exit device

#### SPECTRA SERIES EXIT DEVICE LIST

**S6303FH** Fire rated mortise exit device with electric frame actuator, key retracts latch **1,978.00**

#### ACTUATOR VOLTAGE AND FRAME SIZE Add to List

Failsafe actuator for 1-3/4" to 2" face frames		Narrow failsafe actuator for 1-1/4" to 1-1/2" face frames	
<b>A</b> 115VAC 0.2 Amp	<b>N/C</b>	<b>D</b> 115VAC 0.2 Amp	<b>129.00</b>
<b>B</b> 24VAC 0.5 Amp	<b>N/C</b>	<b>E</b> 24VAC 0.5 Amp	<b>129.00</b>
<b>C</b> 24VDC 0.5 Amp	<b>N/C</b>	<b>F</b> 24VDC 0.5 Amp	<b>129.00</b>

#### SPECIFY HAND

**RR** Right hand reverse bevel, RHRB      **LR** Left hand reverse bevel, LHRB      **N/C**

#### SPECIFY LENGTH

**36** For 36" Door (std)      **N/C**

**42** For 42" Door      **21.00**      **48** For 48" Door      **42.00**

#### SPECIFY FINISH

**U** 630 Dull Stainless Steel (std)      **N/C**

#### OPTIONAL STATUS OUTPUTS

**L** Latch position status output, SPDT, 3 Amp      **65.00**

**S** Latch & deadlocked status output, SPDT, 3 Amp      **108.00**

**SC10** Socket connectors with 10ft. cable, power wiring only      **65.00**

**SC10-5** Socket connectors with 10ft. cable for power and options      **83.00**

#### SPECIFY TRIM

<b>EE03</b> Eclipse x Escutcheon	<b>GE03</b> Galaxy x Escutcheon	<b>NE03</b> Nova x Escutcheon	<b>N/C</b>
<b>E03</b> Eclipse	<b>G03</b> Galaxy	<b>N03</b> Nova	<b>N/C</b>

#### SPECIFY TRIM FINISH

**U** 630 Dull Stainless Steel (std)      **N/C**

#### TRIM OPTIONS Add to List

<b>CYL-6KDQ</b>	6 pin, 1.125" mortise cylinder, keyed different, dull chrome	<b>33.00</b>
<b>CYL-6KAQ</b>	6 pin, 1.125" mortise cylinder, keyed alike, dull chrome	<b>33.00</b>



**NE03 Nova**



**EE03 Eclipse**



**GE03 Galaxy**



**G03 Galaxy**



**E03 Eclipse**



**N03 Nova**

# Exit Device - Electrified Mortise

Distributor Discount Code **XK**



Remains latched when unlocked for fire door integrity. Failsafe (F) fire rated device for stairwell doors, power loss or signal from fire command center releases failsafe device immediatly. Complies with national building and fire codes

**Voltage:** 12/24VDC @ 600/300 mA



SECURITY DOOR CONTROLS  
801 Avenida Acaso • Camarillo, CA 93012  
Email: Service@sdsecurity.com • www.sdsecurity.com



600 Series Power Supply  
602RF (shown)

**SPECIFY DEVICE** LIST

**S63** Mortise [03 Lever Trim included] - specify: **EE/GE** Eclipse Escutcheon/Galaxy Escutcheon **1,174.00**

**SPECIFY FUNCTION** Add to List

**01** Exit Only **03** Nightlatch **N/C**

**SPECIFY PANIC OR FIRE RATED**

**P** Panic **N/C** **F** Fire **118.00**

**SPECIFY HAND (Mortise Only)**

**RR** Right hand reverse bevel, RHRB **LR** Left hand reverse bevel, LHRB **N/C**

**SPECIFY FINISH**

**U** 630 Dull Stainless Steel **N/C**

**SPECIFY LENGTH**

**36** For 36" Door **N/C** **42** For 42" Door **22.00** **48** For 48" Door **44.00**

**SPECIFY TRIM**

**EE** Eclipse Escutcheon **GE** Galaxy Escutcheon **N/C**

**TRIM OPTIONS** Add to List

- CYL-6KDQ** 6 pin, 1.125" mortise cylinder, keyed different, dull chrome **33.00**
- CYL-6KAQ** 6 pin, 1.125" mortise cylinder, keyed alike, dull chrome **33.00**

**SPECIFY FAILSAFE OR FAILSECURE**

**MF** Failsafe Electric Mortise Exit Device **214.00**  
**MS** Failsecure Electric Mortise Exit Device **214.00**

**SPECIFY OPTIONS** LIST

**D** Door Position, MC-4 Door Contact **54.00**  
**L** Latch Position Status Output **86.00**  
**R** Request-To-Exit Output **86.00**

**SPECIFY POWER TRANSFER (For the entire line of Power Transfer, see page 90 and page 91)** LIST

**PTM-2AL** Two (2) Conductor Power Transfer Device: Two (2) 18 Ga. wires 5 Amp @ 12/24V AC/DV, Aluminum Powder Coat, US28 equivalent **383.00**  
**PTH-4Q** Four (4) Conductor Power Transfer Hinge 1 Amp @ 12/24V per pair, 4.5" x 4.5" standard weight, 626 Dull Chrome **161.00**

**SPECIFY POWER SUPPLY (For the entire line of Power Supplies, see page 93)** LIST

**602RF** 1 Amp, class 2 output, 12" W x 12" H x 3.75" D box **279.00**  
**631RF** 1.5 Amp, class 2 output, 12" W x 12" H x 3.75" D box **374.00**

Exit Devices

# Exit Device - Electric Dogging

Distributor Discount Code **XK**



When energized by optional built-in (KS) or remote switch, manual depressing the pushpad causes the pushpad and latch to remain retracted (unlocked) providing push-pull door operation. When de-energized or signaled by a fire alarm, the pushpad and latch are released.

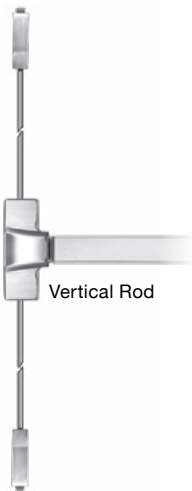
**Voltage:** 12/24VDC @ 170/100 mA



Rim Mount



Mortise



Vertical Rod



EE

GE

**Specify Trim for S61 and S62 - See page 39**



PTM Series



PTH x 5 Ft Cable



600 Series Power Supply 602RF (shown)

SPECIFY DEVICE				LIST				
<b>S61</b>	Rim mount exit device			640.00				
<b>S62</b>	Surface vertical			960.00				
<b>S63</b>	Mortise [03 Lever Trim included] - specify: <b>EE/GE</b> Eclipse Escutcheon/Galaxy Escutcheon			1,174.00				
SPECIFY FUNCTION				Add to List				
<b>01</b>	Exit Only	<b>02</b>	Dummy	<b>03</b>	Nightlatch	<b>N/C</b>		
SPECIFY PANIC OR FIRE RATED								
<b>P</b>	Panic	<b>N/C</b>	<b>F</b>	Fire	<b>118.00</b>			
SPECIFY HAND (Mortise Only)								
<b>RR</b>	Right hand reverse bevel, RHRB	<b>LR</b>	Left hand reverse bevel, LHRB	<b>N/C</b>				
SPECIFY FINISH								
<b>U</b>	630 Dull Stainless Steel			<b>N/C</b>				
SPECIFY LENGTH								
<b>36</b>	For 36" Door	<b>N/C</b>	<b>42</b>	For 42" Door	<b>22.00</b>	<b>48</b>	For 48" Door	<b>44.00</b>
SPECIFY ELECTRIC DOGGING								
<b>G</b>	Electric Dogging			<b>470.00</b>				
Options								
<b>KS</b>	Built-in key switch			<b>86.00</b>				
<b>L1</b>	Dogged Status Indicator, less cylinder, green = dogged (unlocked)			<b>40.00</b>				
SPECIFY TRIM (Mortise Only)								
<b>EE</b>	Eclipse Escutcheon	<b>GE</b>	Galaxy Escutcheon	<b>N/C</b>				
TRIM OPTIONS (NOTE: use Clover Cam for S63)				Add to List				
<b>CYL-6KDQ</b>	6 pin, 1.125" mortise cylinder, keyed different, dull chrome			<b>33.00</b>				
<b>CYL-6KAQ</b>	6 pin, 1.125" mortise cylinder, keyed alike, dull chrome			<b>33.00</b>				
<b>RIM-CYL-KA</b>	Rim Cylinder for 03 Function, keyed alike - see page 39 for more info			<b>36.00</b>				
SPECIFY POWER TRANSFER (For the entire line of Power Transfer, see page 90 and page 91)				LIST				
<b>PTM-2AL</b>	Two (2) Conductor Power Transfer Device: Two (2) 18 Ga. wires 5 Amp @ 12/24V AC/DV, Aluminum Powder Coat, US28 equivalent			<b>383.00</b>				
<b>PTH-4Q</b>	Four (4) Conductor Power Transfer Hinge 1 Amp @ 12/24V per pair, 4.5" x 4.5" standard weight, 626 Dull Chrome			<b>161.00</b>				
SPECIFY POWER SUPPLY (For the entire line of Power Supplies, see page 93)				LIST				
<b>602RF</b>	1 Amp, class 2 output, 12" W x 12" H x 3.75" D box			<b>279.00</b>				
<b>631RF</b>	1.5 Amp, class 2 output, 12" W x 12" H x 3.75" D box			<b>374.00</b>				

# Exit Device - Electric Latch Retraction/Dogging

Distributor  
Discount Code **XK**

Momentary or maintained latch bolt and push pad retraction, with simultaneous dogging.  
Automatic re-triggering of latch retraction

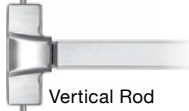
**Voltage:** 24VDC @ 700 mA activation, 200 mA continuous



Rim Mount



Mortise



Vertical Rod



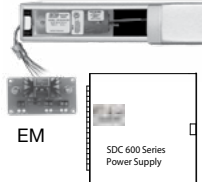
EE



GE



E



EM

SDC 600 Series  
Power Supply

Specify Trim for S61 and S62 - See page 39



PTM Series



PTH x 5 Ft Cable



600 Series Power Supply  
602RF (shown)

SPECIFY DEVICE             LIST

<b>S61</b>	Rim mount exit device	<b>640.00</b>
<b>S62</b>	Surface vertical	<b>960.00</b>
<b>S63</b>	Mortise [03 Lever Trim included] - specify: <b>EE/GE</b> Eclipse Escutcheon/Galaxy Escutcheon	<b>1,174.00</b>

SPECIFY FUNCTION           Add to List

<b>01</b>	Exit Only	<b>02</b>	Dummy	<b>03</b>	Nightlatch	<b>N/C</b>
-----------	-----------	-----------	-------	-----------	------------	------------

SPECIFY PANIC OR FIRE RATED

<b>P</b>	Panic	<b>N/C</b>	<b>F</b>	Fire	<b>118.00</b>
----------	-------	------------	----------	------	---------------

SPECIFY HAND (Mortise Only)

<b>RR</b>	Right hand reverse bevel, RHRB	<b>LR</b>	Left hand reverse bevel, LHRB	<b>N/C</b>
-----------	--------------------------------	-----------	-------------------------------	------------

SPECIFY FINISH

<b>U</b>	630 Dull Stainless Steel	<b>N/C</b>
----------	--------------------------	------------

SPECIFY LENGTH

<b>36</b>	For 36" Door	<b>N/C</b>	<b>42</b>	For 42" Door	<b>22.00</b>	<b>48</b>	For 48" Door	<b>44.00</b>
-----------	--------------	------------	-----------	--------------	--------------	-----------	--------------	--------------

SPECIFY ELECTRIC LATCH RETRACTION

<b>E</b>	Dual Electric Latch Retraction and Dogging	<b>747.00</b>
<b>EM</b>	External Module Dual Electric Latch Retraction/Dogging	<b>801.00</b>

SPECIFY TRIM (Mortise Only)

<b>EE</b>	Eclipse Escutcheon	<b>GE</b>	Galaxy Escutcheon	<b>N/C</b>
-----------	--------------------	-----------	-------------------	------------

TRIM OPTIONS (NOTE: use Clover Cam for S63) Add to List

<b>CYL-6KDQ</b>	6 pin, 1.125" mortise cylinder, keyed different, dull chrome	<b>33.00</b>
<b>CYL-6KAQ</b>	6 pin, 1.125" mortise cylinder, keyed alike, dull chrome	<b>33.00</b>
<b>RIM-CYL-KA</b>	Rim Cylinder for 03 Function, keyed alike - see page 39 for more info	<b>36.00</b>

SPECIFY POWER TRANSFER (For the entire line of Power Transfer, see page 90 and page 91) LIST

<b>PTM-2AL</b>	Two (2) Conductor Power Transfer Device: Two (2) 18 Ga. wires 5 Amp @ 12/24V AC/DV, Aluminum Powder Coat, US28 equivalent	<b>383.00</b>
----------------	--	---------------

<b>PTM-10AL</b>	Ten (10) Conductor Power Transfer Device: Ten (10) 24 Ga. wire 1 Amp @ 12/24V AC/DC, Aluminum Powder Coat, US28 equivalent	<b>383.00</b>
-----------------	---	---------------

<b>PTH-4Q</b>	Four (4) Conductor Power Transfer Hinge 1 Amp @ 12/24V per pair, 4.5" x 4.5" standard weight, 626 Dull Chrome	<b>161.00</b>
---------------	--	---------------

<b>PTH-10Q</b>	Ten (10) Conductor Power Transfer Hinge 1 Amp @ 12/24V per pair, 4.5" x 4.5" standard weight, 626 Dull Chrome	<b>209.00</b>
----------------	--	---------------

SPECIFY POWER SUPPLY (For the entire line of Power Supplies, see page 93) LIST

<b>602RF</b>	1 Amp, class 2 output, 12" W x 12" H x 3.75" D box	<b>279.00</b>
--------------	--	---------------

<b>631RF</b>	1.5 Amp, class 2 output, 12" W x 12" H x 3.75" D box	<b>374.00</b>
--------------	--	---------------

<b>EMC</b>	<i>Sequencer Module (For other Modules and pairs of doors see page 95)</i>	<b>161.00</b>
------------	--	---------------

SECURITY DOOR CONTROLS  
801 Avenida Acaso • Camarillo, CA 93012  
Email: Service@sdsecurity.com • www.sdsecurity.com



Exit Devices

**RIM DEVICES STANDARD STRIKES**

**Rim Strikes List**



**ST1P** 22.00  
 Standard for S6100P  
 Projection: 13/16" (21mm)



**ST1F** 22.00  
 Standard for S6100F  
 Projection: 13/16" (21mm)

**Optional Mullion Strike List**



Optional for mullion application

**ST1MP** **ST1MF** 74.00  
 For 6100P For 6100F  
 Projection: 7/8" (22.5mm)

**MORTISE STRIKE List**

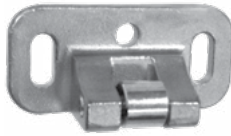


For use on 1-3/4" standard or 2-1/4" thick single door, and 2-1/4" double door with overlapping astragal and coordinator

**ST3F** **ST3P** 20.00  
 Standard for S6300F Standard for S6300P

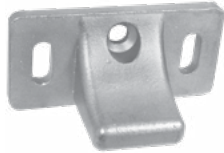
**SURFACE / Standard VERTICAL ROD DEVICES Strike**

**Top Strikes List Bottom (Floor) Strikes List**



**ST2P** 20.00  
 Standard top strike for S6200P

Projection: 29/32" (23mm)

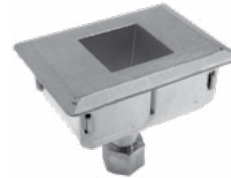


**ST2F** 20.00  
 Standard top strike for S6200F

Projection: 1-1/8" (29mm)



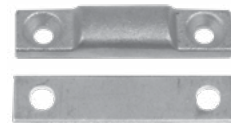
**ST28P** 22.00  
 Standard floor strike for S6200P



**ST28F** 33.00  
 Standard floor strike for S6200F

Mortise: 2-1/4" (57mm)

**Optional Threshold Strikes List**



**ST28T** 16.00  
 Optional floor strike for using threshold openings

Projection: 3/8" (9.5mm)

**OPTIONAL DOUBLE DOOR STRIKE List**



**ST2DF** 52.00  
 Optional for pairs of doors with rim mount device.

Projection: 1-15/16" (49mm)

**REMOVABLE MULLION List**



**KR90F** 694.00  
 Standard Key Removable Mullion Less Key Cylinder  
 For Panic Exit and Fire Exit Rim Mount Devices.

Length: 8ft  
 Material: 2" 11 Gauge Steel Tube  
 Finish: Primer gray

**OPTIONAL CYLINDER List**

**RIM-CYL-KA** 36.00

Rim Cylinder, keyed alike - see page 39 for more info

