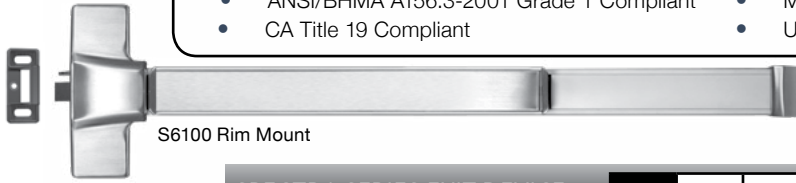


**Panic & Fire Rated Exit Devices ANSI / BHMA Grade 1**

**SDC S6000 Spectra™ Series** panic and fire rated exit devices are available in rim mount, mortise and surface vertical rod configurations. Spectra Class mechanical exit devices are UL listed and ANSI A156.3 Grade 1 compliant and comply with all national and state building and fire life safety codes.

- ANSI/BHMA A156.3-2001 Grade 1 Compliant
- Meets/Exceeds ADA requirements
- CA Title 19 Compliant
- UBC 97, Standard 7.2



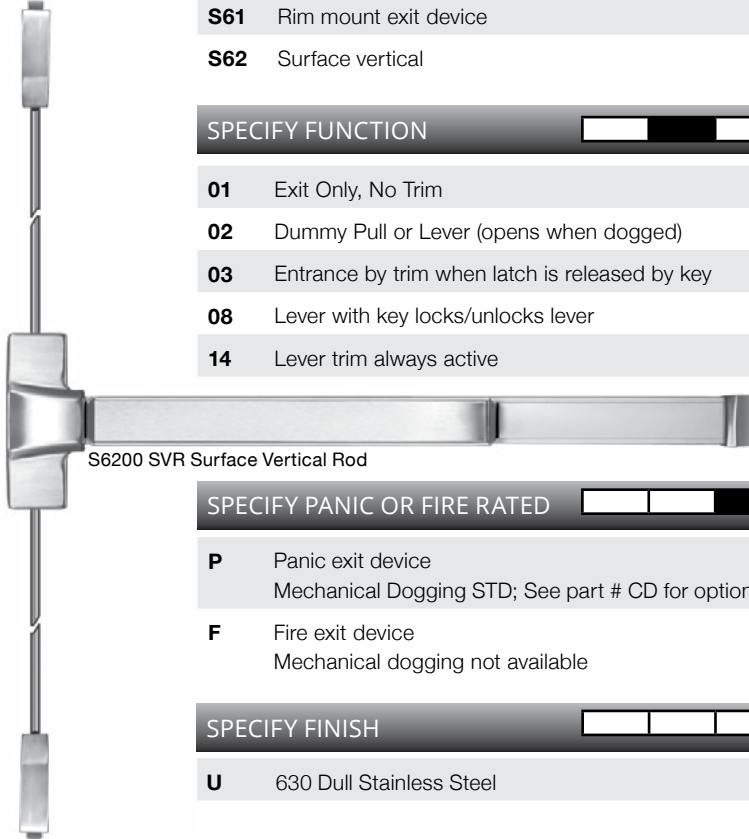
S6100 Rim Mount

**SPECTRA SERIES EXIT DEVICE** [ ] [ ] [ ] [ ] [ ] [ ] LIST

<b>S61</b>	Rim mount exit device	<b>640.00</b>
<b>S62</b>	Surface vertical	<b>960.00</b>

**SPECIFY FUNCTION** [ ] [ ] [ ] [ ] [ ] [ ]

<b>01</b>	Exit Only, No Trim	<b>N/C</b>
<b>02</b>	Dummy Pull or Lever (opens when dogged)	<b>N/C</b>
<b>03</b>	Entrance by trim when latch is released by key	<b>N/C</b>
<b>08</b>	Lever with key locks/unlocks lever	<b>N/C</b>
<b>14</b>	Lever trim always active	<b>N/C</b>



S6200 SVR Surface Vertical Rod

**SPECIFY PANIC OR FIRE RATED** [ ] [ ] [ ] [ ] [ ] Add to List

<b>P</b>	Panic exit device Mechanical Dogging STD; See part # CD for optional key cylinder dogging	<b>N/C</b>
<b>F</b>	Fire exit device Mechanical dogging not available	<b>118.00</b>

**SPECIFY FINISH** [ ] [ ] [ ] [ ] [ ] [ ] Add to List

<b>U</b>	630 Dull Stainless Steel	<b>N/C</b>
----------	--------------------------	------------

**SPECIFY LENGTH** [ ] [ ] [ ] [ ] [ ] [ ] Add to List

<b>36</b>	For 36" Door	<b>N/C</b>	<b>42</b>	For 42" Door	<b>22.00</b>	<b>48</b>	For 48" Door	<b>44.00</b>
-----------	--------------	------------	-----------	--------------	--------------	-----------	--------------	--------------

**SPECIFY OPTIONS** [ ] [ ] [ ] [ ] [ ] [ ] [ ] Add to List

<b>R</b>	Request-To-Exit Output, SPDT	<b>86.00</b>	<b>L</b>	Latch Status Output, SPDT	<b>86.00</b>
----------	------------------------------	--------------	----------	---------------------------	--------------

**For 62 Series devices only:**

<b>LBR</b>	Less Bottom Rod, for Panic Devices	<b>N/C</b>	<b>LBRF</b>	Less Bottom Rod, for Fire Rated devices	<b>N/C</b>
------------	------------------------------------	------------	-------------	---	------------

<b>CD</b>	Keyed dogging (Specify key cylinder separately) (not available with (F) fire exit device)	<b>22.00</b>
-----------	--	--------------



S6200-LBR SVR



Eclipse



Galaxy



Saturn

Standard Active and Dummy Trim

SPECIFY LEVER TRIM

Add to List

Trim Type	Function	Finish	Part #	Price
Eclipse	Dummy Trim	630	<b>EK02U</b>	<b>240.00</b>
	Key Retracts Latchbolt	630	<b>EK03U</b>	<b>240.00</b>
	Key Locks/Unlocks Lever	630	<b>EK08U</b>	<b>240.00</b>
Galaxy	No Cylinder, Lever Always Active	630	<b>EK14U</b>	<b>240.00</b>
	Dummy Trim	630	<b>GK02U</b>	<b>240.00</b>
	Key Retracts Latchbolt	630	<b>GK03U</b>	<b>240.00</b>
Saturn	Key Locks/Unlocks Lever	630	<b>GK08U</b>	<b>240.00</b>
	No Cylinder, Lever Always Active	630	<b>GK14U</b>	<b>240.00</b>
	Dummy Trim	630	<b>SP02U</b>	<b>108.00</b>
	Key Retracts Latchbolt	630	<b>SP03U</b>	<b>108.00</b>

OPTIONAL CYLINDERS

Add to List

<ul style="list-style-type: none"> <li>Rim cylinder required for 03 functions</li> </ul>	<ul style="list-style-type: none"> <li>1 key cylinder required for CD option</li> </ul>	<ul style="list-style-type: none"> <li>Mortise cylinder required for 08 functions and GKE03, EKE03</li> </ul>
<b>CYL-6KDQ</b>	6 pin, 1.125" mortise cylinder, keyed different, dull chrome, incl. straight cam	<b>33.00</b>
<b>CYL-6KAQ</b>	6 pin, 1.125" mortise cylinder, keyed alike, dull chrome, incl. straight cam	<b>33.00</b>
<b>RIM-CYL-KA</b>	6-pin Rim Cylinder, Keyed Alike, Specially for 03 Function Specifically For Trim EK03, GK03 and SP03	<b>36.00</b>



ELECTRIC TRIM OPTIONS FOR SDC 6000 SERIES

Add to List

FEATURES

- Failsecure, field reversible to failsafe
- 600/300 mA @ 12/24VDC
- 4 ft cable and connectors

**EKE03** Eclipse style electric trim less mortise cylinder, Stainless Steel Finish **720.00**

**GKE03** Galaxy style electric trim less mortise cylinder, Stainless Steel Finish **720.00**

Electric Trim Options

**LS** Locked/unlocked status, SPDT 3 Amp contact **86.00**



EKE03 Eclipse



GKE03 Galaxy

**SECURITY DOOR CONTROLS**  
 801 Avenida Acaso • Camarillo, CA 93012  
 Email: Service@sdsecurity.com • www.sdsecurity.com



Optinal Door Strikes

LIST



**ST2DF** **52.00**

Optional for pairs of doors with rim mount device.

**Projection:** 1-15/16" (49mm)



**ST1MP**  
For 6100P



**ST1MF**  
For 6100F

**Projection:** 7/8" (22.5mm)

**74.00**

Optional for mullion application

Removable Mullion

LIST



**KR90F** **694.00**

**Standard Key Removable Mullion**

For Panic Exit and Fire Exit Rim Mount Devices

**Length:** 8ft

**Material:** 2" 11 Gauge Steel Tube

**Finish:** Primer gray



**RIM DEVICES STANDARD STRIKES**

**Rim Strikes List**



**ST1P** 22.00  
 Standard for S6100P  
 Projection: 13/16" (21mm)



**ST1F** 22.00  
 Standard for S6100F  
 Projection: 13/16" (21mm)

**Optional Mullion Strike List**



Optional for mullion application

**ST1MP** **ST1MF** 74.00  
 For 6100P For 6100F  
 Projection: 7/8" (22.5mm)

**MORTISE STRIKE List**

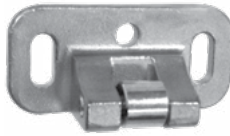


For use on 1-3/4" standard or 2-1/4" thick single door, and 2-1/4" double door with overlapping astragal and coordinator

**ST3F** **ST3P** 20.00  
 Standard for S6300F Standard for S6300P

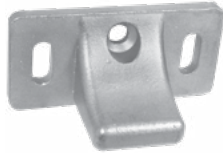
**SURFACE / Standard VERTICAL ROD DEVICES Strike**

**Top Strikes List Bottom (Floor) Strikes List**



**ST2P** 20.00  
 Standard top strike for S6200P

Projection: 29/32" (23mm)

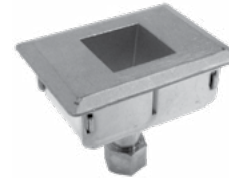


**ST2F** 20.00  
 Standard top strike for S6200F

Projection: 1-1/8" (29mm)



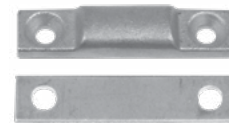
**ST28P** 22.00  
 Standard floor strike for S6200P



**ST28F** 33.00  
 Standard floor strike for S6200F

Mortise: 2-1/4" (57mm)

**Optional Threshold Strikes List**



**ST28T** 16.00  
 Optional floor strike for using threshold openings

Projection: 3/8" (9.5mm)

**OPTIONAL DOUBLE DOOR STRIKE List**



**ST2DF** 52.00  
 Optional for pairs of doors with rim mount device.

Projection: 1-15/16" (49mm)

**REMOVABLE MULLION List**



**KR90F** 694.00  
 Standard Key Removable Mullion Less Key Cylinder  
 For Panic Exit and Fire Exit Rim Mount Devices.

Length: 8ft  
 Material: 2" 11 Gauge Steel Tube  
 Finish: Primer gray

**OPTIONAL CYLINDER List**

**RIM-CYL-KA** 36.00

Rim Cylinder, keyed alike - see page 39 for more info

