

Exit Devices - Alarmed Exit

Distributor Discount Code **XK**

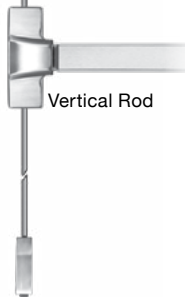
- LED (field selectable Active or Off) Bypass - No LED
- Armed - Blinks every 4 seconds (Green when armed, Red when in alarm mode)
- Low Battery Alert – Siren will beep every 45 seconds. 15 or 60 second arming delay
- Remote status output
- Field selectable alarm modes include:
 - › Continuous alarm with manual key reset
 - › Alarm automatically rearms 2 minutes after door closes and may be retriggered. May be manually rearmed by key before automatically rearmed.



Rim Mount



Mortise



Vertical Rod



Specify Trim for S61 and S62 - See page 35



PTM Series



PTH x 5 Ft Cable



600 Series Power Supply 602RF (shown)

SPECIFY DEVICE			LIST
S61	Rim mount exit device		640.00
S62	Surface vertical		960.00
S63	Mortise [03 Lever Trim included] - specify: EE/GE Eclipse Escutcheon/Galaxy Escutcheon		1,174.00
SPECIFY FUNCTION			Add to List
01	Exit Only	03 Nightlatch	N/C
SPECIFY PANIC OR FIRE RATED			
P	Panic	N/C Fire	118.00
SPECIFY HAND (Mortise Only)			
RR	Right hand reverse bevel, RHRB	LR Left hand reverse bevel, LHRB	N/C
SPECIFY FINISH			
U	630 Dull Stainless Steel		N/C
SPECIFY LENGTH			
36	For 36" Door	N/C	
42	For 42" Door	22.00	
48	For 48" Door	44.00	
SPECIFY EXIT ALARM			
A	Exit Alarm, 9V Battery Powered		427.00
B	Exit Alarm with 12/24V AC/DC input (9V battery provides power backup)		470.00
Options			
AD1	1 second arming delay		N/C
SPECIFY TRIM (Mortise Only)			
EE	Eclipse Escutcheon	GE Galaxy Escutcheon	N/C
TRIM OPTIONS (NOTE: use Clover Cam for S63)			Add to List
CYL-6KDQ	6 pin, 1.125" mortise cylinder, keyed different, dull chrome		33.00
CYL-6KAQ	6 pin, 1.125" mortise cylinder, keyed alike, dull chrome		33.00
RIM-CYL-KA	Rim Cylinder for 03 Function, keyed alike - see page 39 for more info		36.00
SPECIFY POWER TRANSFER (For the entire line of Power Transfer, see page 90 and page 91)			LIST
PTM-2AL	Two (2) Conductor Power Transfer Device: Two (2) 18 Ga. wires 5 Amp @ 12/24V AC/DV, Aluminum Powder Coat, US28 equivalent		383.00
PTH-4Q	Four (4) Conductor Power Transfer Hinge 1 Amp @ 12/24V per pair, 4.5" x 4.5" standard weight, 626 Dull Chrome		161.00
SPECIFY POWER SUPPLY (For the entire line of Power Supplies, see page 93)			LIST
602RF	1 Amp, class 2 output, 12" W x 12" H x 3.75" D box		279.00
631RF	1.5 Amp, class 2 output, 12" W x 12" H x 3.75" D box		374.00

Exit Devices

SECURITY DOOR CONTROLS
 801 Avenida Acaso • Camarillo, CA 93012
 Email: Service@sdsecurity.com • www.sdsecurity.com



RIM DEVICES STANDARD STRIKES

Rim Strikes List



ST1P 22.00
 Standard for S6100P
 Projection: 13/16" (21mm)



ST1F 22.00
 Standard for S6100F
 Projection: 13/16" (21mm)

Optional Mullion Strike List



Optional for mullion application

ST1MP **ST1MF** 74.00
 For 6100P For 6100F
 Projection: 7/8" (22.5mm)

MORTISE STRIKE List

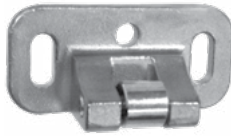


For use on 1-3/4" standard or 2-1/4" thick single door, and 2-1/4" double door with overlapping astragal and coordinator

ST3F **ST3P** 20.00
 Standard for S6300F Standard for S6300P

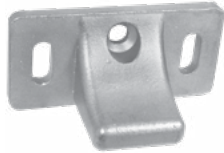
SURFACE / Standard VERTICAL ROD DEVICES Strike

Top Strikes List Bottom (Floor) Strikes List



ST2P 20.00
 Standard top strike for S6200P

Projection: 29/32" (23mm)

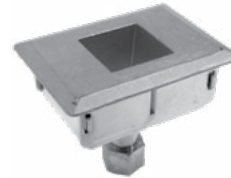


ST2F 20.00
 Standard top strike for S6200F

Projection: 1-1/8" (29mm)



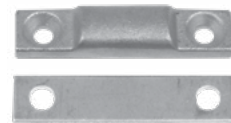
ST28P 22.00
 Standard floor strike for S6200P



ST28F 33.00
 Standard floor strike for S6200F

Mortise: 2-1/4" (57mm)

Optional Threshold Strikes List



ST28T 16.00
 Optional floor strike for using threshold openings

Projection: 3/8" (9.5mm)

OPTIONAL DOUBLE DOOR STRIKE List



ST2DF 52.00
 Optional for pairs of doors with rim mount device.

Projection: 1-15/16" (49mm)

REMOVABLE MULLION List



KR90F 694.00
 Standard Key Removable Mullion Less Key Cylinder
 For Panic Exit and Fire Exit Rim Mount Devices.

Length: 8ft
 Material: 2" 11 Gauge Steel Tube
 Finish: Primer gray

OPTIONAL CYLINDER List

RIM-CYL-KA 36.00

Rim Cylinder, keyed alike - see page 39 for more info

