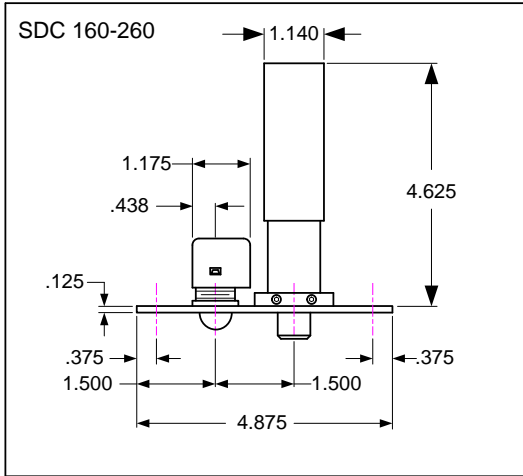
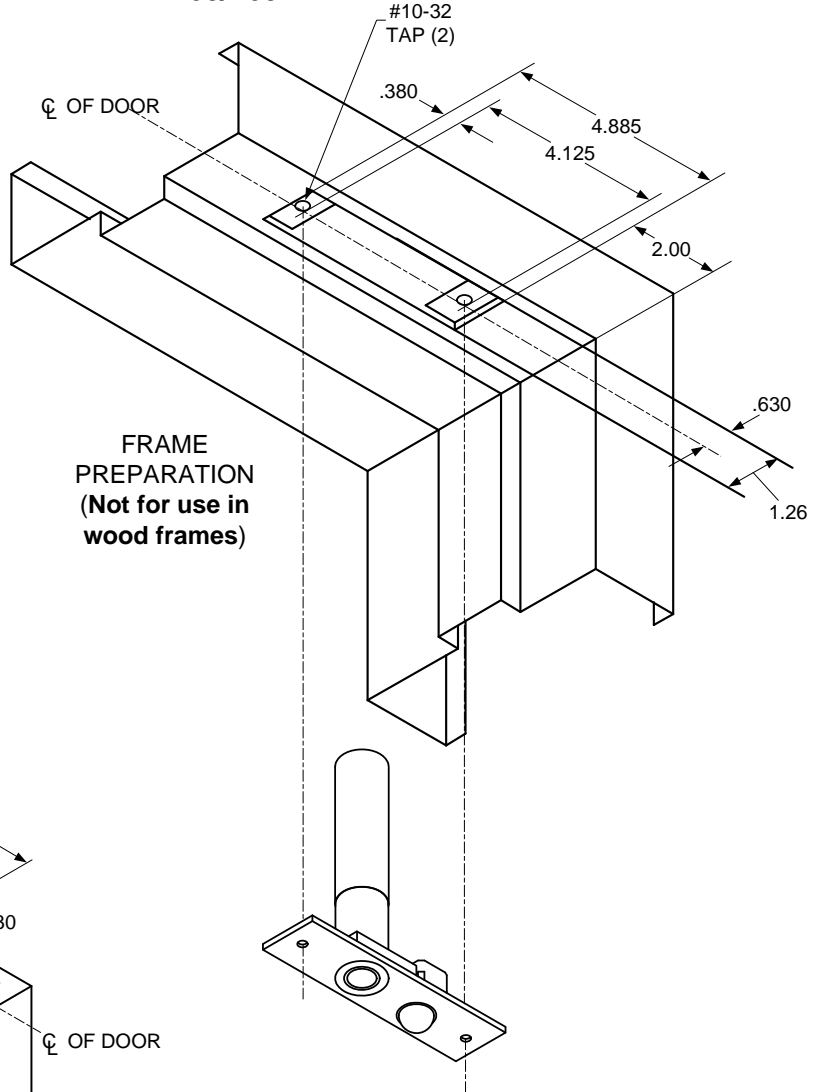


SDC Security Door Controls

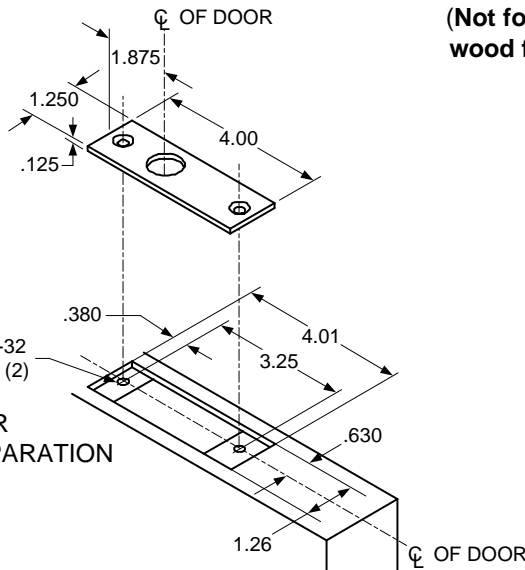
801 Avenida Acaso, Camarillo, Ca. 93012 • (805) 494-0622 •
 www.sdcsecurity.com • E-mail: service@sdsecurity.com



TEMPLATE 160/260



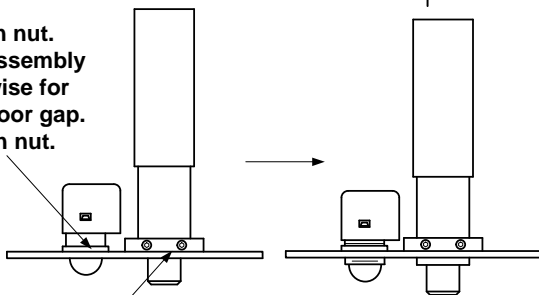
FRAME PREPARATION
 (Not for use in wood frames)



DOOR PREPARATION

Auto Relock Switch (ARS) & Bolt
 Adjustable for Wide Door Gap

Loosen nut.
 Turn assembly clockwise for wide door gap.
 Tighten nut.



Loosen Set Screws to move Bolt Chamber.

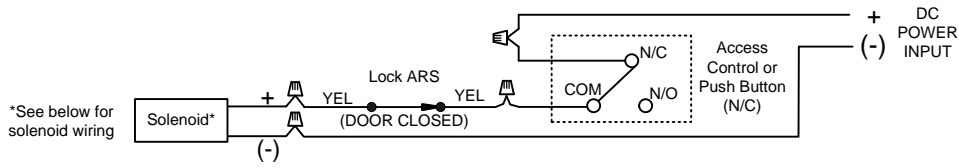
NOTE: TEMPLATE DIMENSIONS ARE SUBJECT TO CHANGE WITHOUT NOTICE.

TECHNICAL DATA (FOR STANDARD UNIT)

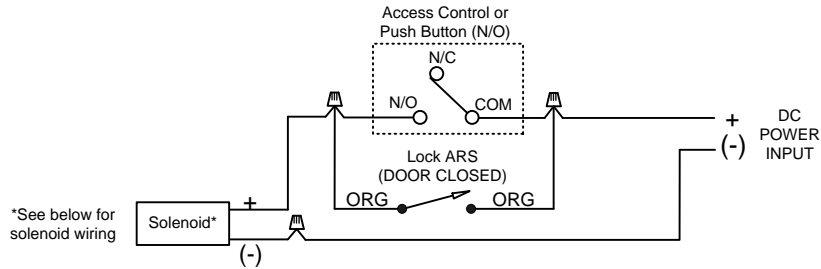
- FACE PLATE: 4-7/8" x 1-1/4" x 1/8"
- STRIKE: 4" x 1-1/4" x 1/8"
- ID REQUIREMENTS: 4-7/8" x 1-1/4" x 4-5/8"
- BOLT: 1/2" DIA. STAINLESS STEEL
- BOLT THROW: 1/2" ROTATING, ADJUSTABLE FOR WIDE GAP
- 160: FAIL-SAFE – LOCKED WHEN ENERGIZED
- 260: FAIL-SECURE – UNLOCKED WHEN ENERGIZED
- SOLENOID: CONTINUOUS DUTY
- AUTO RELOCK SWITCH: ADJUSTABLE BALL PLUNGER TYPE

LOCK WIRING

160 (Standard wiring):

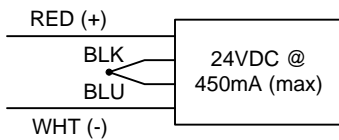


260 (Standard wiring):

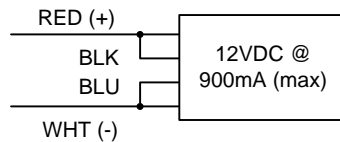


Solenoid Voltage Configuration:

24VDC SOLENOID CONFIGURATION



12VDC SOLENOID CONFIGURATION



ELECTRICAL DATA:
Dual Voltage (110/210)
 12VDC @ .9 Amp (max.)
 24VDC @ .45 Amp (max.)
Continuous Duty