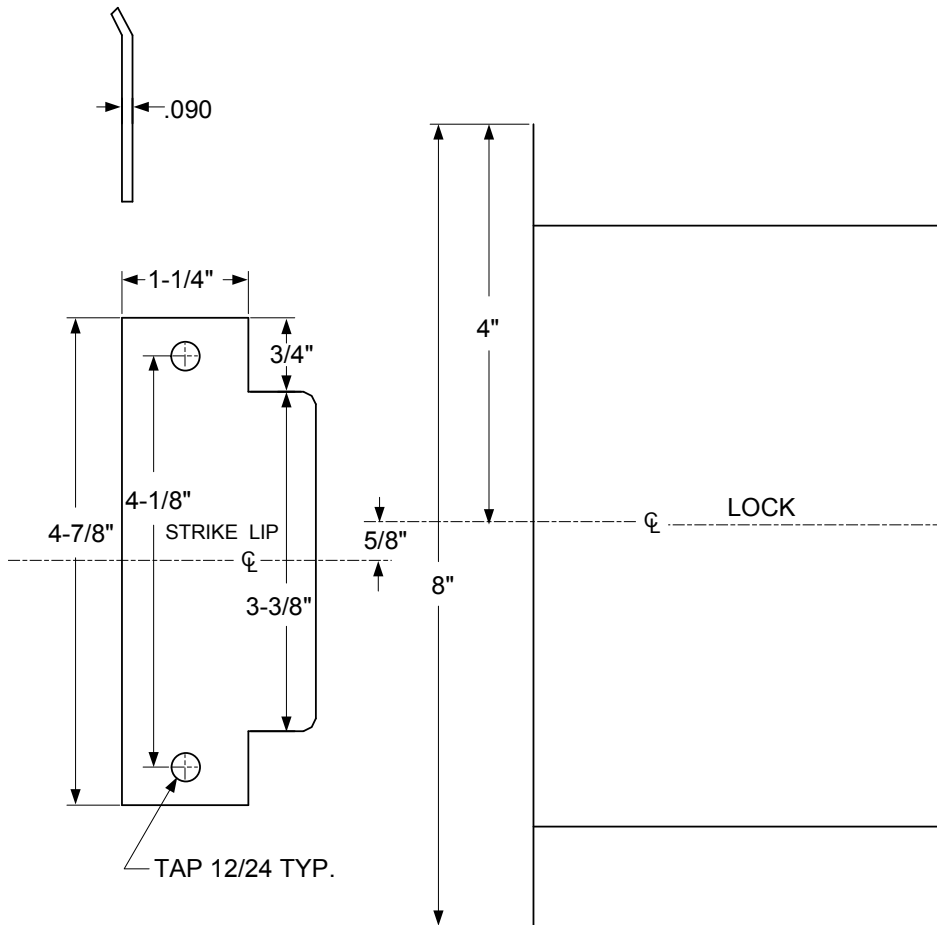


SDC Security Door Controls

801 Avenida Acaso, Camarillo, Ca. 93012 • (805) 494-0622 •
www.sdcsecurity.com • E-mail: service@sdsecurity.com

HITOWER CONVERSION TEMPLATE – 1-3/4" - 2" FRAMES



NOT TO SCALE

NOTE:
CONCRETE/
MASONRY
DETAIL
SHOWN

FOR STRIKE
RELATION TO
LOCK SEE
LEFT SIDE OF
TEMPLATE

NOTE:
MINIMUM FRAME
FACE 1-3/4"

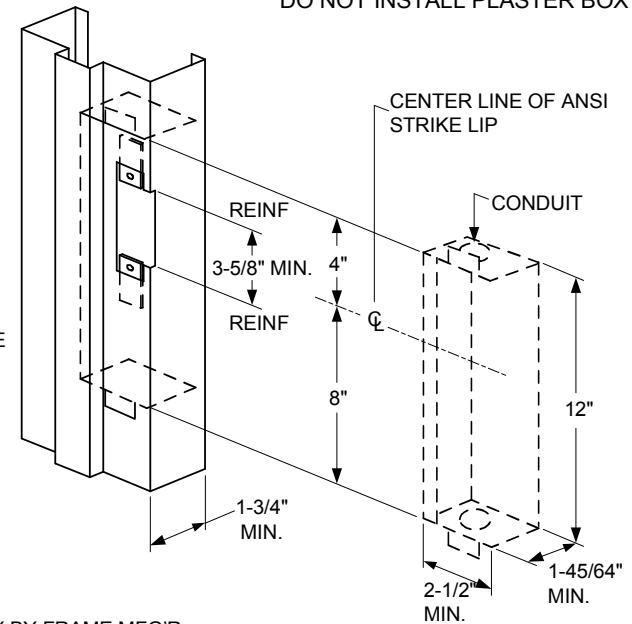
RIGHT HAND
SHOWN,
LEFT HAND
OPPOSITE

ELECTRICAL BOX BY FRAME MFG'R

IMPORTANT

Details show space requirements for electric controller box. Allowances for different wall construction materials must be taken into consideration. Install conduit connectors in top of box before welding to frame.

DO NOT INSTALL PLASTER BOX



NOTE:

THE 3-5/8" CLEARANCE BETWEEN THE STRIKE REINFORCEMENT TABS IS CRITICAL. *MAXIMUM THICKNESS OF TABS .125

UL LISTED BOX AS SHOWN AVAILABLE FROM SECURITY DOOR CONTROLS PART #7500EB-S

HOLES REQUIRED FUNCTIONS

CYL OUTSIDE ONLY	CYL BOTH SIDES
7550	7530

Door Prep. Only

Identify the lock and manufacturer by letter prefix. Review proper manufactures template requirements for **door prep only**. See details far left and above for frame prep.

SOURCE #	MODEL #
ZY SDC	7500
A Falcon	MA581
O Yale	7130F L5
U Dorma	ML9080
V Marks	5EW