



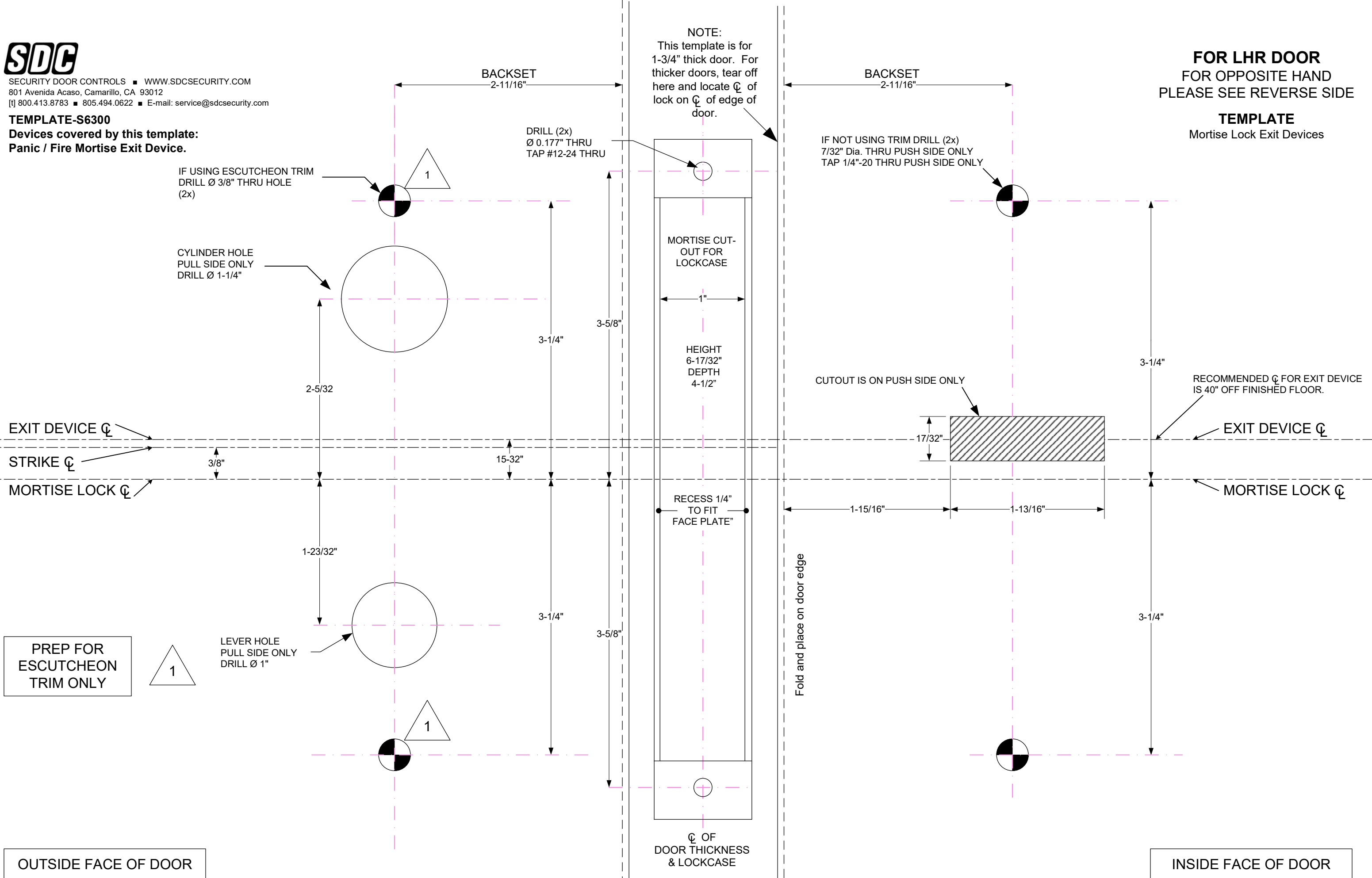
SECURITY DOOR CONTROLS ■ WWW.SDCSECURITY.COM
 801 Avenida Acaso, Camarillo, CA 93012
 [t] 800.413.8783 ■ 805.494.0622 ■ E-mail: service@sdsecurity.com

TEMPLATE-S6300

Devices covered by this template:
Panic / Fire Mortise Exit Device.

FOR LHR DOOR
FOR OPPOSITE HAND
PLEASE SEE REVERSE SIDE

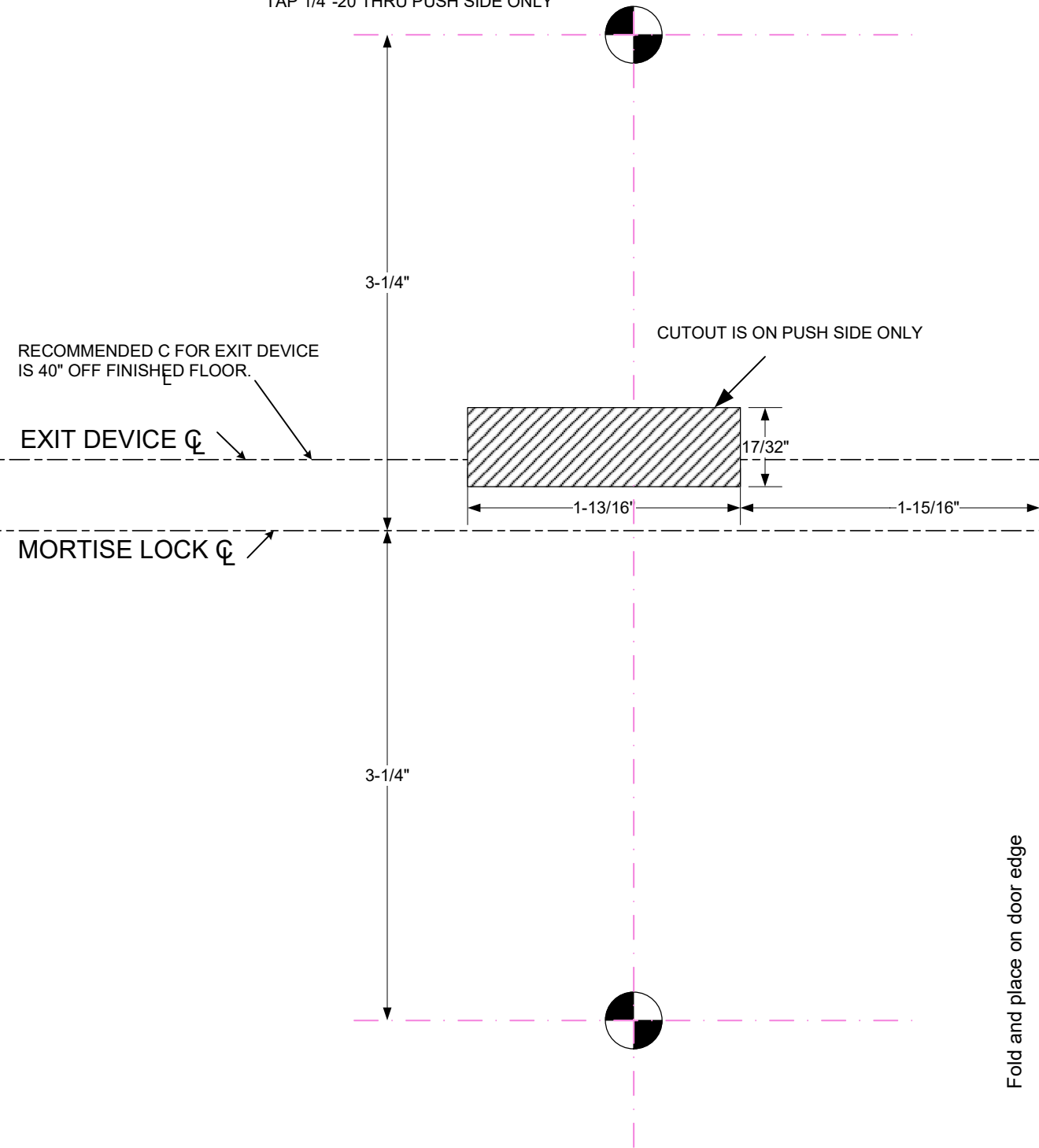
TEMPLATE
 Mortise Lock Exit Devices



FOR RHR DOOR
FOR OPPOSITE HAND
PLEASE SEE REVERSE SIDE

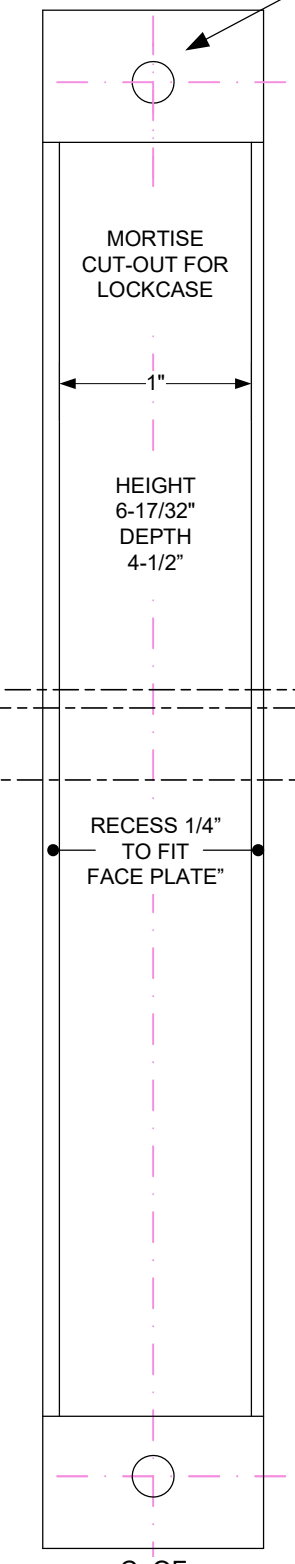
TEMPLATE
 Mortise Lock Exit Devices

IF NOT USING TRIM DRILL (2x)
 7/32" Dia. THRU PUSH SIDE ONLY
 TAP 1/4"-20 THRU PUSH SIDE ONLY



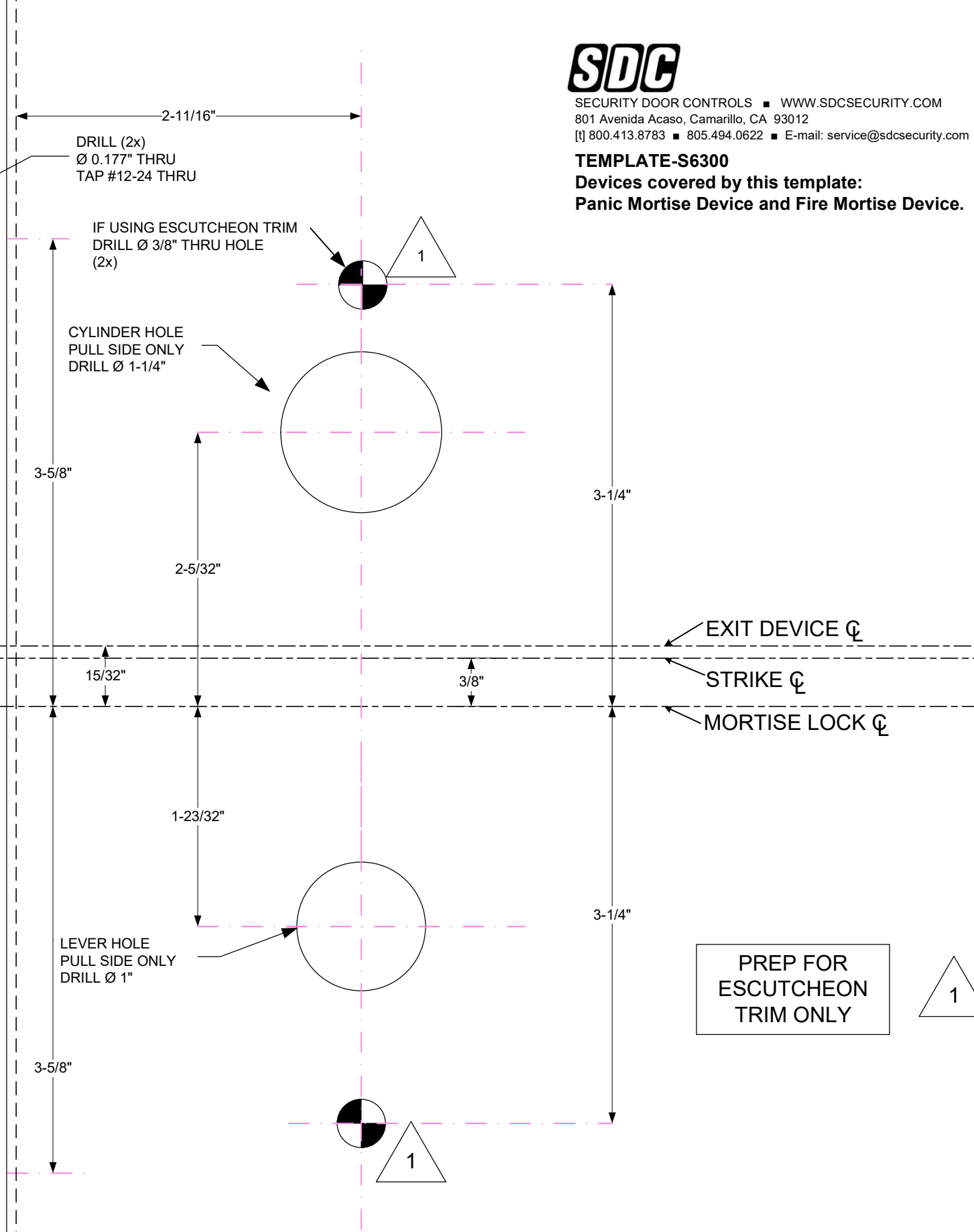
INSIDE FACE OF DOOR

NOTE:
 This template is for
 1-3/4" thick door. For
 thicker doors, tear off
 here and locate ϕ of
 lock on ϕ of edge of
 door.



ϕ OF
 DOOR THICKNESS
 & LOCKCASE

Fold and place on door edge



OUTSIDE FACE OF DOOR



SECURITY DOOR CONTROLS ■ WWW.SDCSECURITY.COM
 801 Avenida Acaso, Camarillo, CA 93012
 [t] 800.413.8783 ■ 805.494.0622 ■ E-mail: service@sdsecurity.com

TEMPLATE-S6300
Devices covered by this template:
Panic Mortise Device and Fire Mortise Device.



TEMP-S6300 STRIKE TEMPLATE – 1-3/4" ~ 2" FRAMES DIMENSIONAL REFERENCE ONLY NOT TO SCALE

STRIKE DETAIL

LOCK DETAIL

