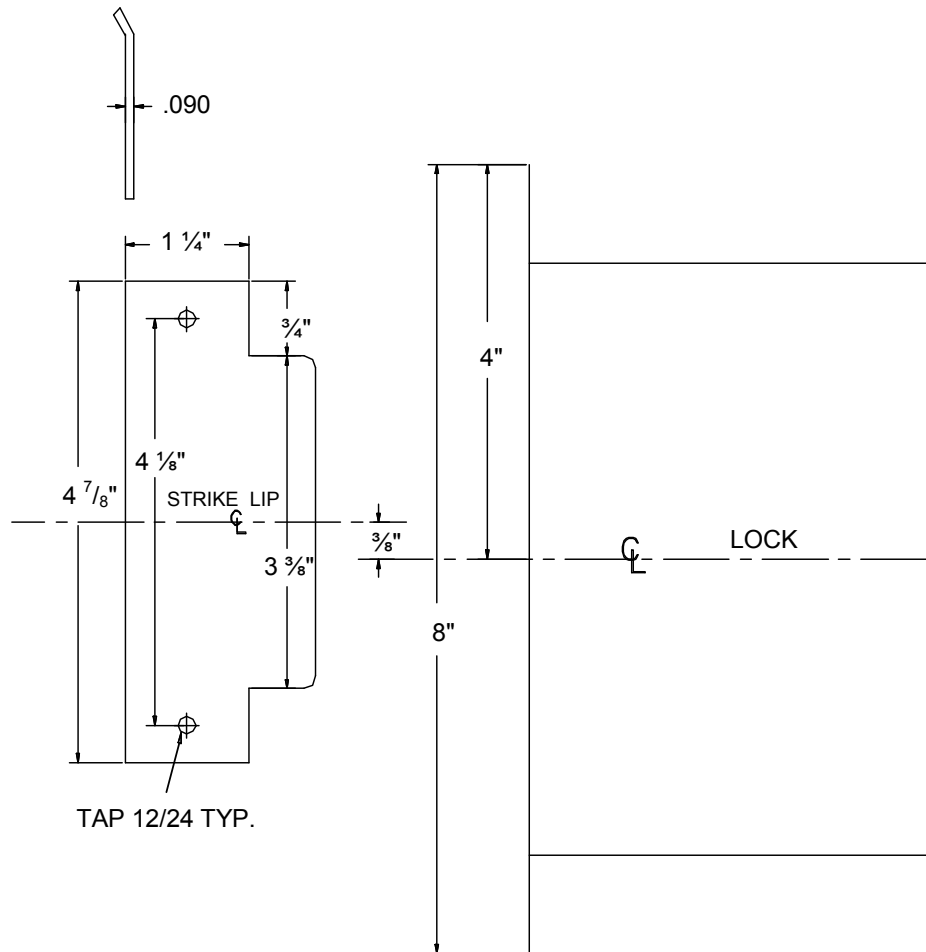


SDC SECURITY DOOR CONTROLS

801 Avenida Acaso, Camarillo, CA 93012 • (805) 494-0622 • Fax: (805) 494-8861
 www.sdcsecurity.com • E-mail: service@sdsecurity.com

HITOWER S6303FH TEMPLATE 1 3/4" - 2" FRAMES



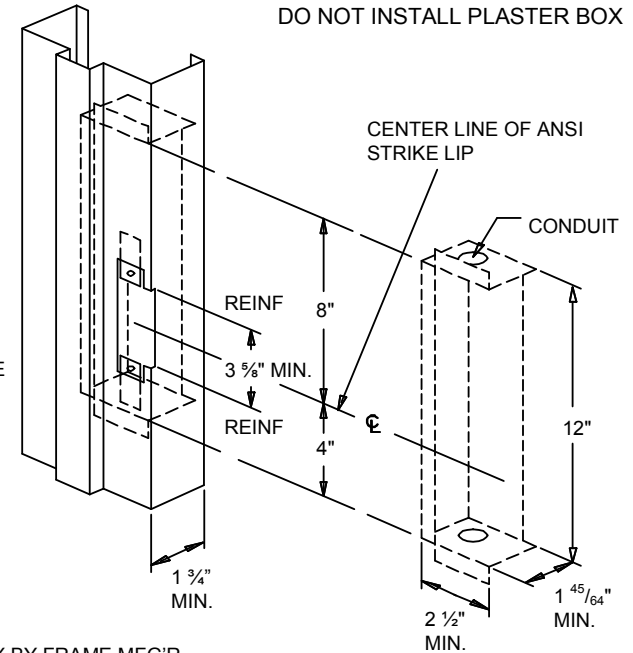
NOT TO SCALE

NOTE:
 CONCRETE/
 MASONRY
 DETAIL
 SHOWN

FOR STRIKE
 RELATION TO
 LOCK SEE
 LEFT SIDE OF
 TEMPLATE

NOTE:
 MINIMUM FRAME
 FACE 1 3/4"

RIGHT HAND
 SHOWN, LEFT
 HAND OPPOSITE



ELECTRICAL BOX BY FRAME MFG'R

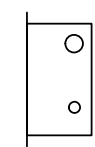
IMPORTANT

Details show space requirements for electric controller box. Allowances for different wall construction materials must be taken into consideration. Install conduit connectors in top of box before welding to frame.

NOTE:

THE 3-3/8" CLEARANCE BETWEEN THE STRIKE REINFORCEMENT TABS IS CRITICAL.
 *MAXIMUM THICKNESS OF TABS .125
 UL LISTED BOX AS SHOWN AVAILABLE FROM SECURITY DOOR CONTROLS PART #7500EB-S

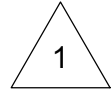
**HOLES
 REQUIRED
 FUNCTIONS**



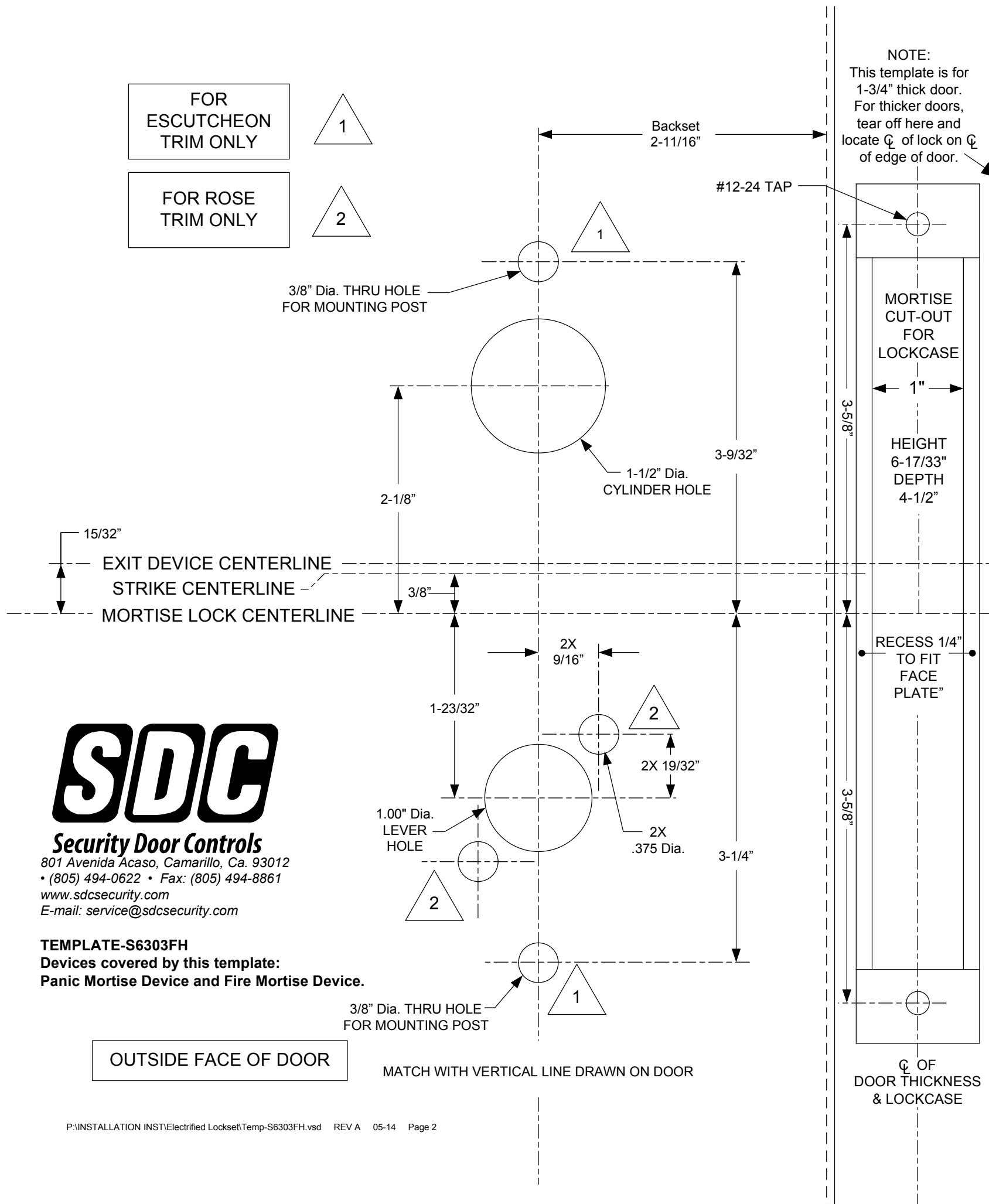
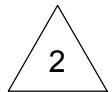
CYL OUTSIDE ONLY

S6303FH

FOR ESCUTCHEON TRIM ONLY

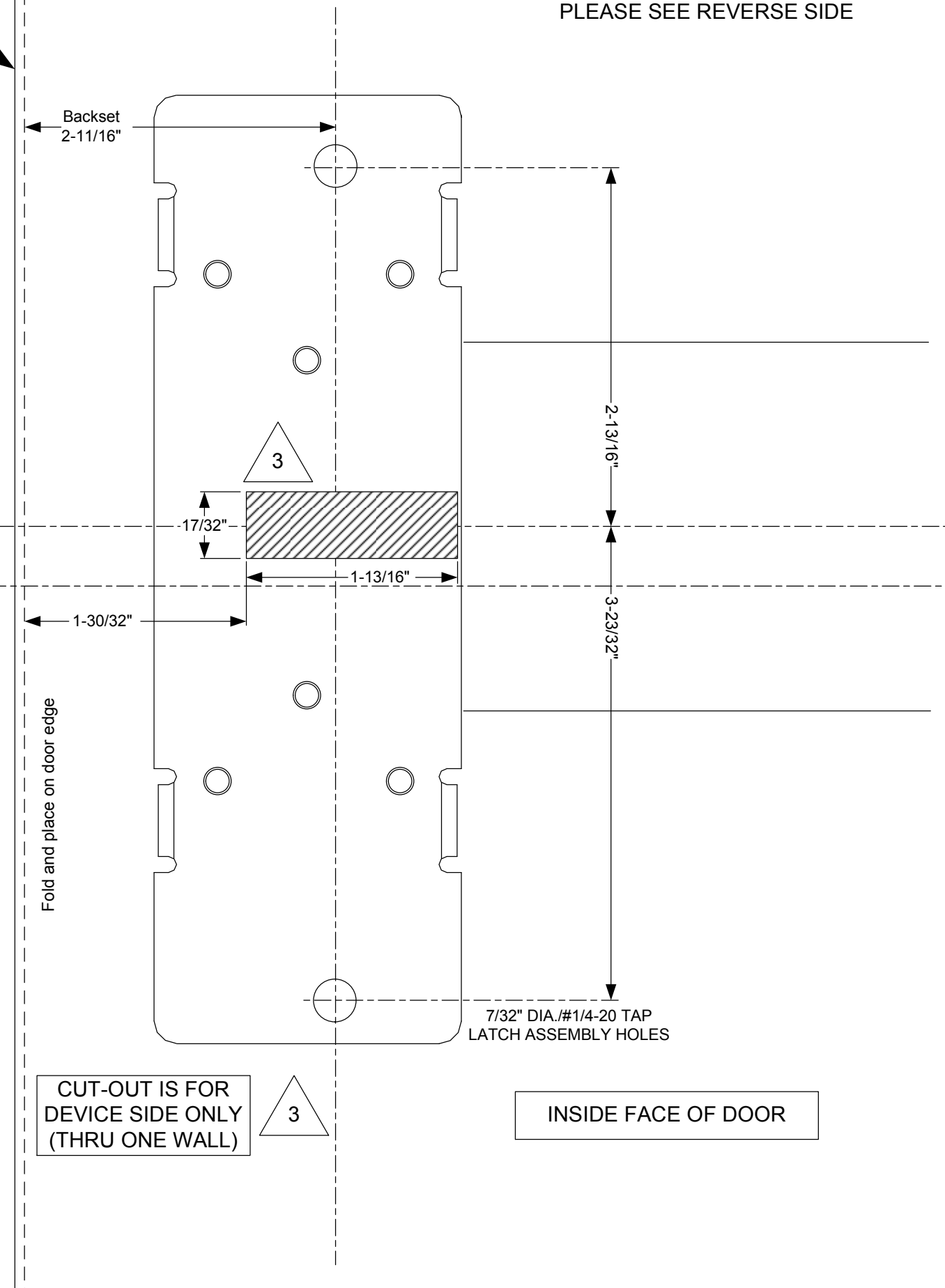


FOR ROSE TRIM ONLY



TEMPLATE
Mortise Lock Exit Devices
Dimensional only. Not to scale.

FOR LHR DOOR
FOR OPPOSITE HAND
PLEASE SEE REVERSE SIDE



Security Door Controls
801 Avenida Acaso, Camarillo, Ca. 93012
• (805) 494-0622 • Fax: (805) 494-8861
www.sdcsecurity.com
E-mail: service@sdsecurity.com

TEMPLATE-S6303FH
Devices covered by this template:
Panic Mortise Device and Fire Mortise Device.

OUTSIDE FACE OF DOOR

INSIDE FACE OF DOOR

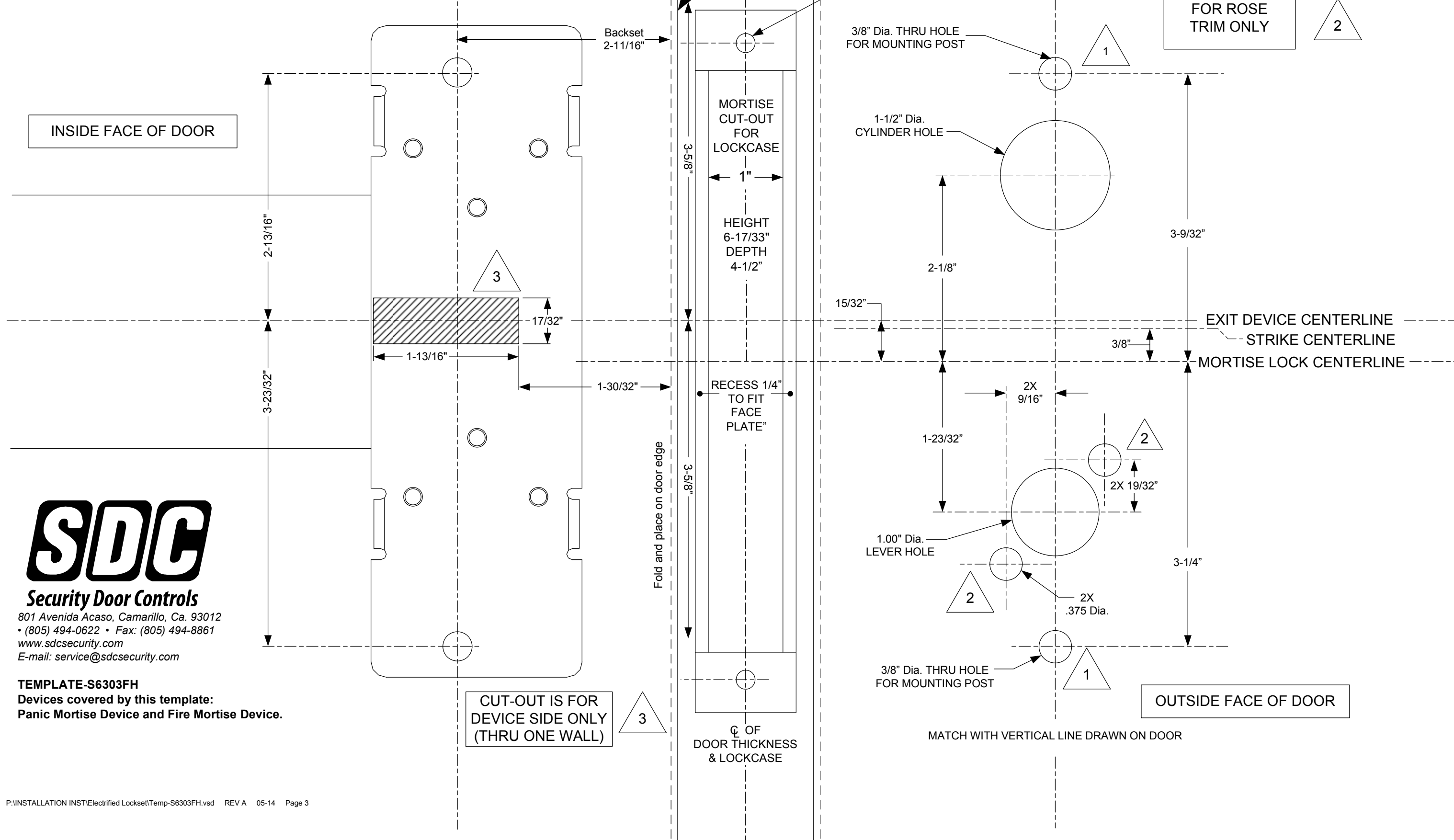
FOR RHR DOOR

FOR OPPOSITE HAND
PLEASE SEE REVERSE SIDE

TEMPLATE

Mortise Lock Exit Devices
Dimensional only. Not to scale.

NOTE:
This template is for
1-3/4" thick door.
For thicker doors,
tear off here and
locate ϕ of lock on ϕ
of edge of door.



Security Door Controls
801 Avenida Acaso, Camarillo, Ca. 93012
• (805) 494-0622 • Fax: (805) 494-8861
www.sdcsecurity.com
E-mail: service@sdsecurity.com

TEMPLATE-S6303FH
Devices covered by this template:
Panic Mortise Device and Fire Mortise Device.

CUT-OUT IS FOR
DEVICE SIDE ONLY
(THRU ONE WALL)