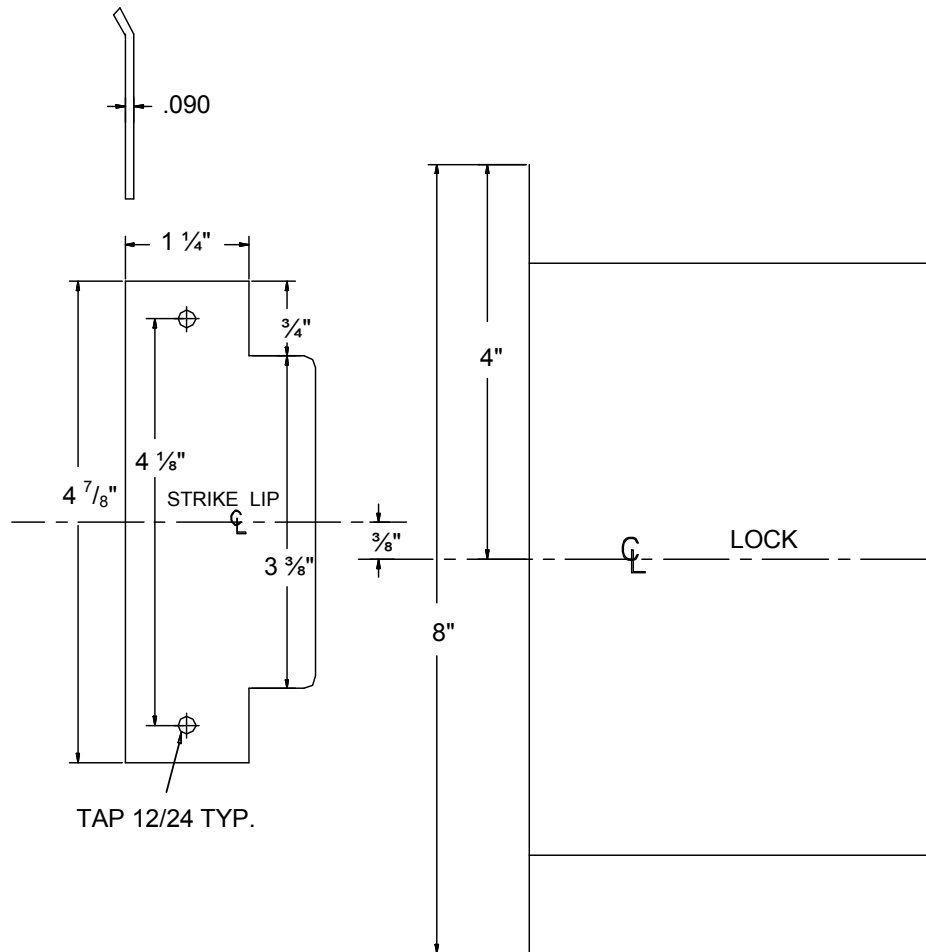


SDC Security Door Controls

801 Avenida Acaso, Camarillo, Ca. 93012 • (805) 494-0622 • Fax: (805) 494-8861
www.sdcsecurity.com • E-mail: service@sdsecurity.com

HITOWER Z, S, I, D, P, T, H & N 7500 SERIES TEMPLATE 1 3/4" - 2" FRAMES



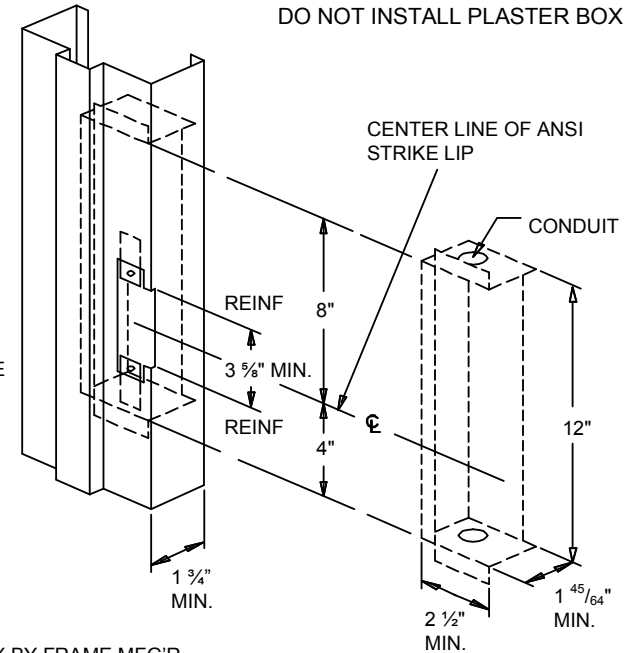
NOT TO SCALE

NOTE:
CONCRETE/
MASONRY
DETAIL
SHOWN

FOR STRIKE
RELATION TO
LOCK SEE
LEFT SIDE OF
TEMPLATE

NOTE:
MINIMUM FRAME
FACE 1 3/4"

RIGHT HAND
SHOWN, LEFT
HAND OPPOSITE



ELECTRICAL BOX BY FRAME MFG'R

IMPORTANT

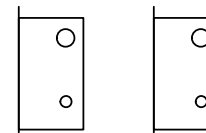
Details show space requirements for electric controller box. Allowances for different wall construction materials must be taken into consideration. Install conduit connectors in top of box before welding to frame.

NOTE:

THE 3-5/8" CLEARANCE BETWEEN THE STRIKE REINFORCEMENT TABS IS CRITICAL.
*MAXIMUM THICKNESS OF TABS .125

UL LISTED BOX AS SHOWN AVAILABLE FROM SECURITY DOOR CONTROLS PART #7500EB-S

HOLES REQUIRED FUNCTIONS



CYL
OUTSIDE
ONLY

CYL
BOTH
SIDES

7550

7530

Door Prep. Only

Identify the lock and manufacturer by letter prefix. Review proper manufacturer's template requirements for **door prep only**. See details far left and above for frame prep.

SOURCE #	MODEL #
Z SDC	7500
S Schlage	L9080
I Corbin/Ruswin	ML2057
D Sargent	8200
P Yale	8805
T Best	45H
N Arrow	B12
H Hager	3880