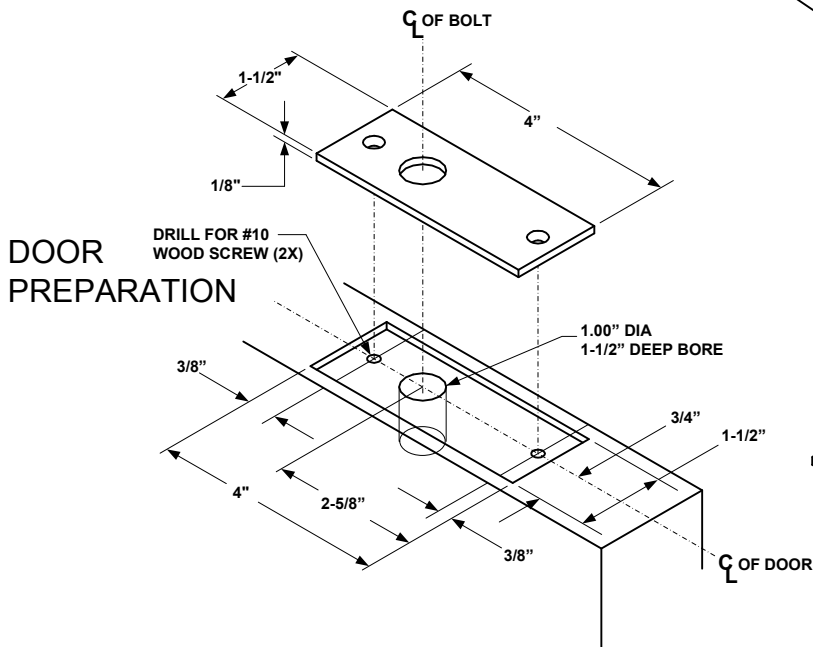
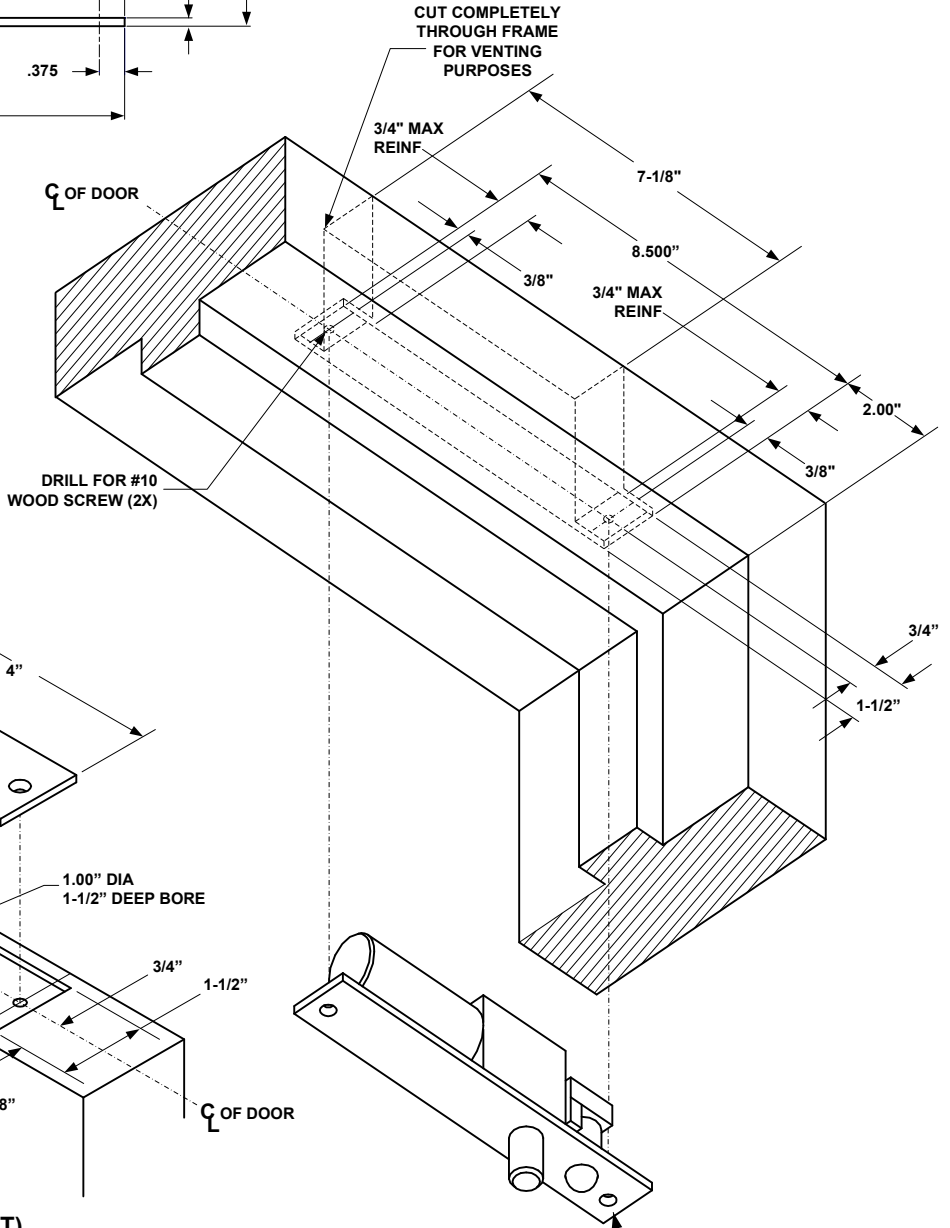
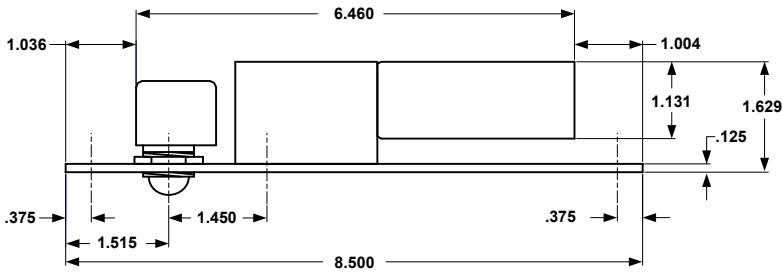


SDC Security Door Controls

801 Avenida Acaso, Camarillo, Ca. 93012 • (805) 494-0622 •
 www.sdcsecurity.com • E-mail: service@sdsecurity.com

TEMPLATE 1091AWD WOOD DOOR & FRAME APPLICATION



TECHNICAL DATA (FOR STANDARD UNIT)
FACE PLATE: 8-1/2" x 1-1/2" x 1/8"
STRIKE: 4" x 1-1/2" x 1/8"
ID REQUIREMENTS: 7-1/8" x 1-1/2" x 2-5/8"
BOLT: 5/8" DIA. SOLID STAINLESS STEEL
BOLT THROW: 3/4"

WHEN INSTALLED VERTICALLY, THIS END UP.
 WHEN INSTALLED HORIZONTALLY THIS END NEAR LOCK STILE

Any suggestions or comments to this instruction or product are welcome. Please contact us through our website or email engineer@sdsecurity.com