

RIM DEVICES STANDARD STRIKES

SURFACE / Standard VERTICAL ROD DEVICES Strike

Rim Strikes List



ST1P
Standard for S6100P
Projection: 13/16" (21mm)



ST1F
Standard for S6100F
Projection: 13/16" (21mm)

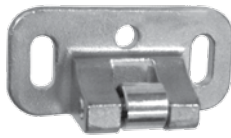
Optional Mullion Strike List



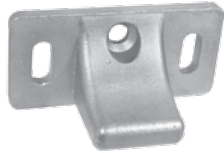
Optional for mullion application

ST1MP **ST1MF** **71.00**
For 6100P For 6100F
Projection: 7/8" (22.5mm)

Top Strikes List



ST2P
Standard top strike for S6200P
Projection: 29/32" (23mm)

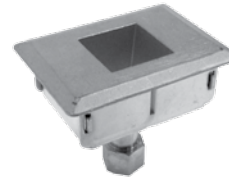


ST2F
Standard top strike for S6200F
Projection: 1-1/8" (29mm)

Bottom (Floor) Strikes List

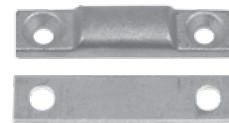


ST28P
Standard floor strike for S6200P



ST28F
Standard floor strike for S6200F
Mortise: 2-1/4" (57mm)

Optional Threshold Strikes List



ST28T **15.00**
Optional floor strike for using threshold openings
Projection: 3/8" (9.5mm)

MORTISE STRIKE List



For use on 1-3/4" standard or 2-1/4" thick single door, and 2-1/4" double door with overlapping astragal and coordinator

ST3P **ST3P**
Standard for S6300F Standard for S6300P

OPTIONAL DOUBLE DOOR STRIKE List



ST2DF **50.00**
Optional for pairs of doors with rim mount device.
Projection: 1-15/16" (49mm)

REMOVABLE MULLION List



KR90F **673.00**
Standard Key Removable Mullion Less Key Cylinder
For Panic Exit and Fire Exit Rim Mount Devices.
Length: 8ft
Material: 2" 11 Gauge Steel Tube
Finish: Primer gray

OPTIONAL CYLINDER List

RIM-CYL-KA **34.00**

Rim Cylinder, keyed alike - see page 37 for more info

