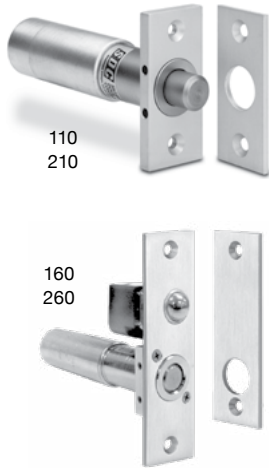


Conventional Mortise Bolt Locks

Distributor Discount Code **AK LIST**



110/160 Dual Voltage Coil: 900/450 mA @ 12/24 VDC
210/260 Dual Voltage Coil: 900/450 mA @ 12/24 VDC
 Mortise strike standard.
Not for use in wood frames.

5" depth required

110IV	2-3/4" x 1-1/4" Face plate, less auto relock switch, failsafe V 628 Aluminum (<i>standard</i>)	200.00
210HV	2-3/4" x 1-1/4" Face plate, less auto relock switch, failsecure V 628 Aluminum (<i>standard</i>)	200.00
160IV	4-7/8" x 1-1/4" Face plate with auto relock switch, failsafe V 628 Aluminum (<i>standard</i>)	267.00
260HV	4-7/8" x 1-1/4" Face plate with auto relock switch, failsecure V 628 Aluminum (<i>standard</i>)	267.00

SPECIFY ADD-ON

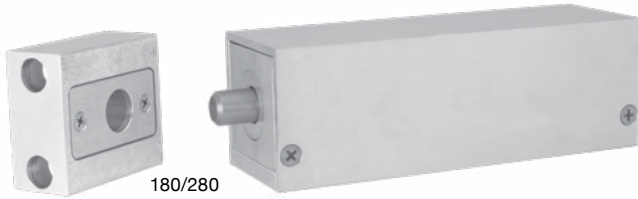
Add to List

MC-4	External recessed magnetic (3/4", SPDT, 30VDC, 50mA)	54.00
-------------	--	--------------

Electric Bolt Locks

Surface Mount Bolt Locks

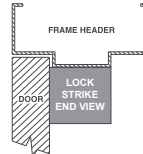
Distributor Discount Code **AK LIST**



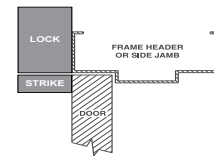
Dimensions: 6" L x 2" W x 2" H

180 Dual Voltage Coil: 900/450 mA @ 12/24 VDC

280 Dual Voltage Coil: 900/450 mA @ 12/24 VDC



**Surface Mount
Outswing Door**



**Top Jamb
Inswing or Sliding Door**

MODEL

180AIV	Surface mount, failsafe, with auto relock, Aluminum standard	290.00
280AHV	Surface mount, failsecure with auto relock, Aluminum standard	290.00

SPECIFY ADD-ON

Add to List

D	External recessed magnetic (3/4", SPDT, 30VDC, 50mA) MC-4	54.00
----------	---	--------------

Bolt Lock Accessory

Distributor Discount Code **AK LIST**

Voltage Regulator
for 110, 210, 160, 260 Bolt Locks



Dimensions: 3. 3/4" x 1 1/4" x 1/2"

PR-1000 Voltage Regulator - reduces solenoid heat

67.00