

Dual Switch Bollard Post - CBC compliant

Distributor Discount Code **CK**



- California CBC Section 11B 404.3 code compliant bollard and switch plates
- Black HDPE mortised removable cap with secure transmitter mount
- Two 4-1/2" ♿ Push to Open blue infill push plates, located at 7" and 36" centerline from floor
- 6" square post with 1/8" walls
- Surface mount (42")

SPECIFY MODEL LIST

Model	Description	
CBC482A4U	42" surface mount, 6" square post, with high and low 4-1/2" SPDT switch plates	688.00
CBC484A4U	42" surface mount, 6" square post, with high and low 4-1/2" DPDT switch plates	739.00

Bollard Post

Distributor Discount Code **CK**



Push Plate and Touch Panel NOT INCLUDED see page 86 for ordering info

- For use with Push Plates, Touch Panel Columns & Exit Switches
- Black HDPE mortised removable cap with secure transmitter mount
- Standard single gang prep located at 36" from finished floor
- 6" square with 1/8" walls
- Surface mount (42") or In-Ground mount (54")

SPECIFY MODEL LIST

Model	Description	
BPS6	42" surface mount, 6" square post	417.00
BPG6	54" in-ground, 6" square post	417.00

SPECIFY PREP Add to List

S	1-gang prep	N/C
D	2-gang prep	N/C
P	Touch Panel prep	N/C
A	Narrow Mullion Prep	N/C

SPECIFY FINISH Add to List

V 628 Aluminum (standard)	X 710 Dark Anodized Aluminum	N/C
----------------------------------	-------------------------------------	------------

400 Series Wireless Transmitter and Receiver

Distributor Discount Code **CK LIST**

For Remote Control Versatility for Touch Panel Column and Push Plate Switches



433MHz Micro Transmitter

- Requires a non-metallic surface box or standard bollard cap (non-metallic). Works with 400RC433
- Pre-Wired for quick installation
- Antenna magnifies signal

Voltage Input: 9V Battery (included)
Trigger Input: Momentary, N.O.Dry Contact
Temperature: -20F — 100F
Dimensions: 1-9/64" x 15/16" x 7/32" (29 x 49 x 6mm)

Model	Description	
400W1-433	433MHz Micro Transmitter	136.00



433MHz 1 Channel Nano Receiver

- Designed to control automatic closing and anti-burglar systems. Works with 400W1-433.

Carrier Frequency: 433.92 MHz
Relay Numbers: 1
Temperature: -4F — 158F
Power Supply: 12/24 VAC/DC
Contacts: C-NO
Dimensions: 1-1/4" x 2" x 3/4" Deep (32 x 51 x 19mm)

Model	Description	
400RC433	433MHz 1 Channel Receiver	168.00

For Handicap Access, Automatic Door Activation & Request-to-Exit Applications

- Door Opener Activation
- Automatic Door Activation
- Access Control Request-to-Exit (RTE)
- Door Sequencer Activation



= can be used with wireless transmitter and receiver

SPECIFICATIONS

Mounting Plate	Heavy Duty 1/8" (3.2mm) mounting plate
Faceplate	Heavy 18 Gauge (1.02mm), 630/US32D Satin Stainless Steel Standard
Legends	Bold debossing or engraving with black, blue or white infill
Contacts	SPDT or DPDT, 15 Amps @ 125/250VAC; UL 1054, CSA Listed
Depth	[Narrow & (1) Gang] SPDT-7/8" deep, DPDT-1-3/8" deep, [4 1/2", & 6" square/ round] SPDT-3/4" deep, DPDT-1-5/32"



1-11/16" Narrow Mullion Push Plate Switch – Recessed, Surface Box or Bollard Mount

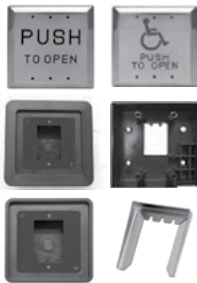
SPDT Model	Description	DPDT Model	Description
48201U	Push to Open, black infill	67.00	48401U Push to Open, black infill 93.00
482A1U	Push to Open, blue infill	67.00	484A1U Push to Open, blue infill 93.00
400-1B	Narrow Mullion Surface Box, 1-3/4" x 4-9/16" x 1-3/4" O.D.		20.00



2 3/4" x 4 1/2" Single (1) Gang Push Plate Switch

- Pressing any part of the push plate (2 3/4" x 4 1/2") causes switch actuation
- Recessed, Surface Box or Bollard Mount
- Depth: SPDT - 3/4" deep; DPDT - 1 1/2" deep

SPDT Model	Description	DPDT Model	Description
48202U	Push to Open, black infill	80.00	48402U Push to Open, black infill 106.00
482A2U	Push to Open, blue infill	80.00	484A2U Push to Open, blue infill 106.00
480-2SB	Surface mount box, 2 3/4" x 4 1/2" x 1 5/8" O.D.		30.00



4 1/2" x 4 1/2" Square Push Plate Switches

- Pressing any part of the push plates 4 1/2" x 4 1/2" active area causes switch actuation
- 1 Gang or 2 gang recessed or Surface Box Mount
- Depth: SPDT 5/8" deep; DPDT 1 1/2" deep

SPDT Model	Description	DPDT Model	Description
48204U	Push to Open, black infill	88.00	48404U Push to Open, black infill 114.00
482A4U	Push to Open, blue infill	88.00	484A4U Push to Open, blue infill 114.00
480-4FB	Square Flush Recessed box, 1-gang, 6 3/4" x 6 3/4" x 1 7/8" O.D.		65.00
480-4SBB	Surface mount box, 4-1/2" x 4-1/2" x 1 3/4" O.D. with Battery compartment for wireless		34.00
480-4SB	Surface mount box, 4-1/2" x 4-1/2" x 1 7/8" O.D.		65.00
480-4SE	3-sided stainless shroud for exterior applications, 4-11/16" x 4-7/8" x 12"		40.00



6" x 6" Square Push Plate Switch

- Pressing any part of the push plates 6" x 6" active area causes switch actuation
- 1 Gang or 2 gang recessed or Surface Box Mount
- Depth: SPDT 5/8" deep; DPDT 1 1/2" deep

SPDT Model	Description	DPDT Model	Description
48206U	Push to Open, black infill	93.00	48406U Push to Open, black infill 118.00
482A6U	Push to Open, blue infill	93.00	484A6U Push to Open, blue infill 118.00
480-6SBB	Surface mount box, 2-gang Battery Compartment, 4 1/2" x 4 1/2" x 1 3/4" O.D.		34.00



480 Series Push Plate Switches - Wireless and Hardwired (continued)

Distributor Discount Code **CK LIST**

ADA Compliant



4 1/2" Round Push Plate Switch

- Pressing any part of the push plates 4" 1/2 active area causes switch actuation
- 1 Gang or 2 gang recessed or Surface Box Mount • Depth: SPDT 5/8" deep; DPDT 1 1/2" deep

SPDT Model	Description	Price	DPDT Model	Description	Price
48204RU	Push to Open, black infill	88.00	48404RU	Push to Open, black infill	114.00
482A4RU	♿ Push to Open, blue infill	88.00	484A4RU	♿ Push to Open, blue infill	114.00
480-4RSB	Surface box, 5" Dia., 2 1/8" O.D.	58.00	480-4RFB	Black Flush Escutcheon, 5 7/8" overall diameter with trim ring	65.00
480-4RG	4" round gasket	16.00	480-4RRB	Surface Escutcheon, 7 7/8" Dia., 1 9/16" overall height	65.00



6" Round Push Plate Switch

- Pressing any part of the push plates 6" active area causes switch actuation
- 1 Gang or 2 gang recessed or Surface Box Mount • Depth: SPDT 5/8" deep; DPDT 1 1/2" deep

SPDT Model	Description	Price	DPDT Model	Description	Price
48206RU	Push to Open, black infill	93.00	48406RU	Push to Open, black infill	118.00
482A6RU	♿ Push to Open, blue infill	93.00	484A6RU	♿ Push to Open, blue infill	118.00
480-6RSB	Surface box Round, 6 7/16" Dia., 2 1/8" O.D.	58.00	480-6RFB	Recessed Flush Escutcheon, 7 3/4" overall diameter with trim ring	65.00
480-6RG	6" round gasket	17.00			

480 Series Touch Panel Column - Wireless & Hardwire

Distributor Discount Code **CK**

Applications

- Wireless & Hardwire
- ADA Ingress/R.E.X/Egress Door Opener Activation
- Access Control Request-to-Exit (REX)
- Door Opener Activation
- Automatic Door Activation or Lock Release
- Automatic Door & Exit Device Sequencer Activation



can be used with wireless transmitter and receiver

Features

- Surface wall mount or bollard mount
- Sleek Architectural profile
- No square edges to snag, wide sloping sides deflects impact movement naturally to activate column
- Deflects impact from wheeled carts and conveyances
- Impact & Vandal resistant design, inhibits prying, tampering
- Weather Resistant, no gaps for water or ice penetration
- Choice of SPDT or DPDT, 15 Amps @ 125/250VAC

9" X 6" INGRESS-R.E.X TOUCH PANEL COLUMN

List

Fully Active 22-1/2 Sq. Inch Actuation Area
Recommended Centerline mounting height 34" to 48"

Material: Sturdy 1/8" extrusion with architectural finish
Overall Size: 9" h x 6" w x 1-1/2" d (229 x 152 x 38mm)
Active Area: 9" h x 2-1/2" w (229 x 63.5mm)

SPDT Model	Description	Price
482AA9	♿ Push to Open	298.00
SPECIFY FINISH Add to List		
V 628 Aluminum (standard), blue infill	N/C	X 613 Dark Bronze, white infill
		25.00

36" X 6" INGRESS-R.E.X TOUCH PANEL COLUMN

List

Fully Active 90 Sq. Inch Actuation Area
Recommended mounting height is 3" from floor

Material: Sturdy 1/8" extrusion with architectural finish
Overall Size: 36" h x 6" w x 1-1/2" d (914 x 152 x 38mm)
Active Area: 36" h x 2-1/2" w (914 x 63.5mm)

SPDT Model	Description	Price	DPDT Model	Description	Price
482AA36	♿ Push to Open	417.00	484AA36	♿ Push to Open	443.00
SPECIFY FINISH Add to List					
V 628 Aluminum (standard), blue infill			X 613 Dark Bronze, white infill		N/C

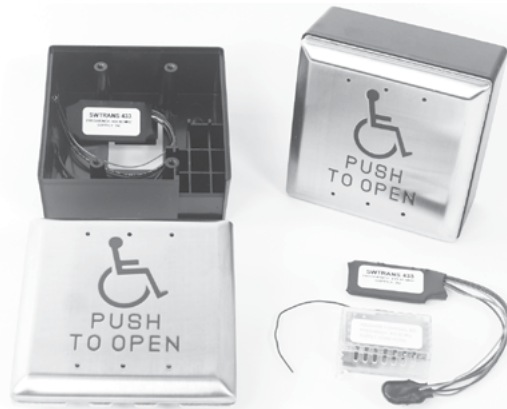


SDG SECURITY DOOR CONTROLS
 801 Avenida Acaso • Camarillo, CA 93012
 Email: Service@sdcsecurity.com • www.sdcsecurity.com

480 Series Wireless Push Plate Switch Kits

Distributor
Discount Code

CK LIST



Wireless 4 1/2" Push Plate Switches

Includes: two Round or Square Push Plate Switches with matching surface mount back box, two wireless transmitters (400W1-433, 9V batteries included), and one wireless nano receiver (400RC433)

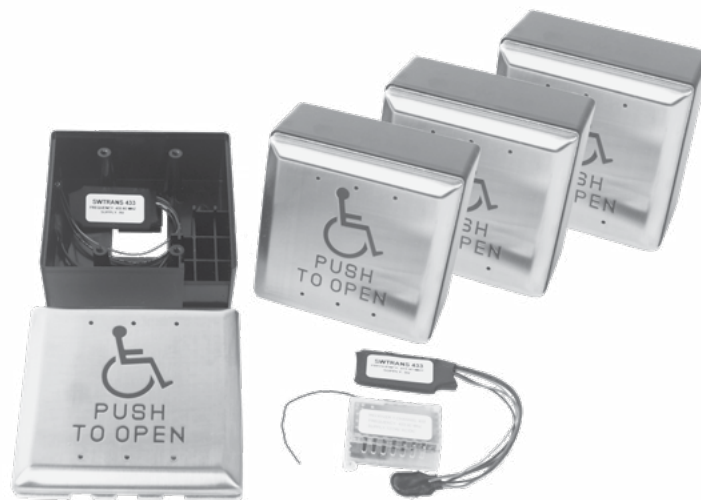
SPDT Model Description

482S-KIT	SQUARE 4-1/2 Push Plate Switches (2), ♿ Push to Open, blue infill, Square Surface Mount Back Boxes (2), Wireless Transmitters (2) and Wireless Receiver (1)	489.00
482R-KIT	ROUND 4-1/2 Push Plate Switches (2), ♿ Push to Open, blue infill, Round Surface Mount Back Boxes (2), Wireless Transmitters (2) and Wireless Receiver (1)	536.00

480 Series CBC High-Low Compliant Wireless Push Plate Switch Kits

Distributor
Discount Code

CK LIST



Wireless 4 1/2" Push Plate Switch Kit for Calif. Building Code Compliance

Includes: four Square Push Plate Switches with matching surface mount back box, four wireless transmitters (400W1-433, 9V batteries included), and one wireless nano receiver (400RC433)

SPDT Model Description

482S-CBCKIT	SQUARE 4-1/2 Push Plate Switches (4), ♿ Push to Open, blue infill, Square Surface Mount Back Boxes (4), Wireless Transmitters (4) and Wireless Receiver (1)	886.00
--------------------	---	---------------