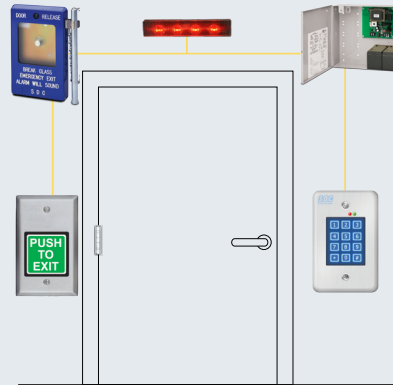
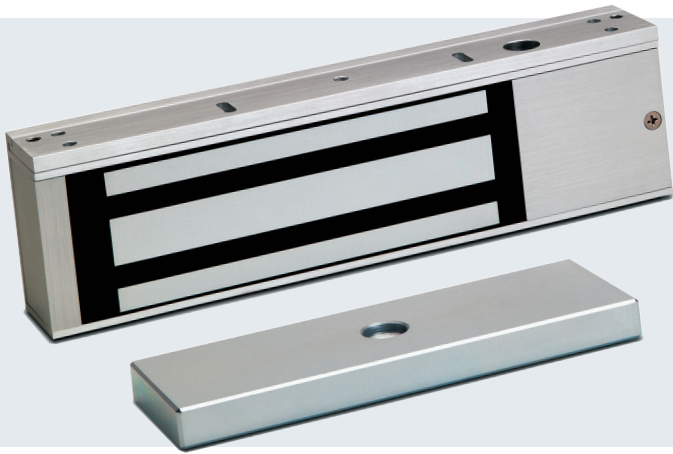


# COST EFFECTIVE DURABLE, HIGH-TRAFFIC ACCESS CONTROL



## Compatible Access & Egress Solution



### Magnetic Lock - E1200

- » Door status, lock status and Bi-color LED
- » Interlocking quick mount assembly
- » 1200 lbs; 12/24vdc



### Keypad - 918U

- » 500 Users, 1-6 digit PIN codes
- » 4 outputs, 2 relay and 2 solid state outputs timed or latching (on/off)
- » Flush mount



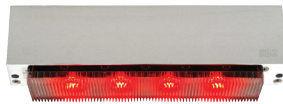
### Request to Exit - 422U

- » SDC "PUSH TO EXIT" switch, 2" square button, MO SPDT, 10 Amp contact, 1-gang



### Emergency Door Release - 491

- » DPDT, Lock-release & siren activation
- » Blue housing with easy to read activation instructions avoids confusion with red fire alarm stations



### Visual Status - EA100

- » Easy to install
- » Suitable for retrofit or new construction



### Power Controller - 602RF

- » Field selectable 12 or 24VDC, regulated and filtered
- » Auto resetting output circuit protection



The lock behind your system

(800) 413-8783 • WWW.SDCSECURITY.COM