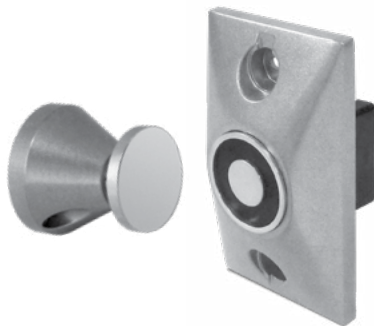


EH Series Magnetic Door Holder & Releasing Device

Distributor Discount Code **V**



SDC EH Series Magnetic Door Holders, are designed to hold doors open and release the door by remote switch or fire life safety command center activation. Primary application includes holding and releasing of fire rated doors that are required to provide a barrier for fire and smoke in an emergency or the convenience of door closure by remote control.



SPECIFICATIONS

Materials	Zinc alloy	Total Projection	Flush mount: 2-11/32" (60mm) Semi-Flush mount: 3-1/16" (78mm) Surface mount: 4-5/8" (117mm) Floor mount (single door): 5" (127mm) Floor mount (double door): 9-5/8" (244mm)
Voltage	Standard dual voltage AC or DC inputs of 12&24V, 24&120V, 24&220V models	Fasteners	Hardware package, mounting bracket
Holding Force	Typical holding force of 25-40 pounds; field selectable high holding force		
Mount	Single or double floor, surface, flush, and recessed mount		

Performance Data

Model	Voltage	DC/mA	AC/mA	Terminals	LB.	KG.
1224	12V	40	38	C&L	30	13.6
	24V	40	36	C&H	30	13.6
24120	24V	20	19	C&L	40	18.1
	120V	—	20	C&H	35	15.8
24220	24V	20	19	C&L	40	18.1
	220V	—	15	C&H	25	11.3

HIGH HOLDING FORCE / SPECIAL APPLICATIONS

Model	Voltage	DC/mA	AC/mA	Terminals	LB.	KG.
1224	24V	85	81	C&L	75	34.0
24120	120V	—	100	C&L	110	49.8

To obtain performance values in high holding force table above apply high listed voltage to low voltage terminals (C & L). NOTE: This configuration can only be applied to models 1224 & 24120.

SPECIFY MODEL

LIST

Model	Description	
EH10	Flush Mount	140.00
EH20	Semi-Flush Mount	108.00
EH30	Surface Mount	156.00
EH40	Floor Mount, Single	201.00
EH42	Floor Mount, Double	252.00

SPECIFY VOLTAGE

Add to List

Voltage	Description	
1224	12/24VAC/DC	N/C
24120	24VAC/DC/120VAC	N/C
24220	24VAC/DC/220VAC	N/C

SPECIFY FINISH

Add to List

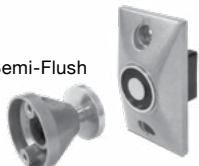
Finish	Description	
A	Chrome Powder Coat	N/C
C	605 Brass Plated	22.00

Example: EH20 24120A

EH10 Flush



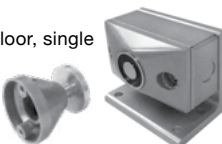
EH20 Semi-Flush



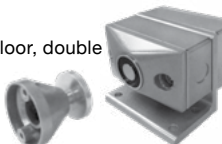
EH30 Surface



EH40 Floor, single

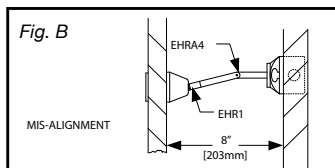
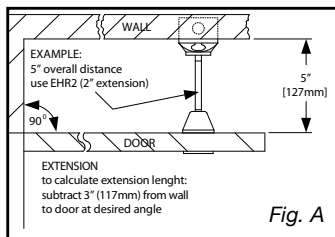
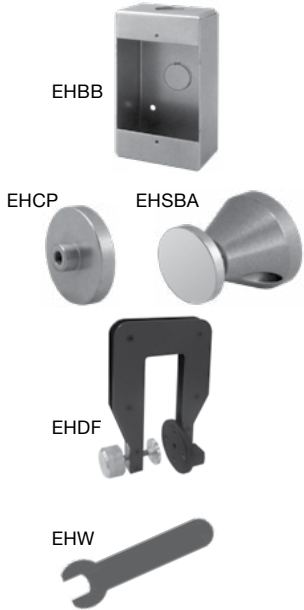
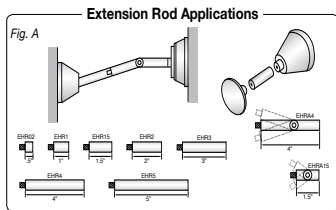
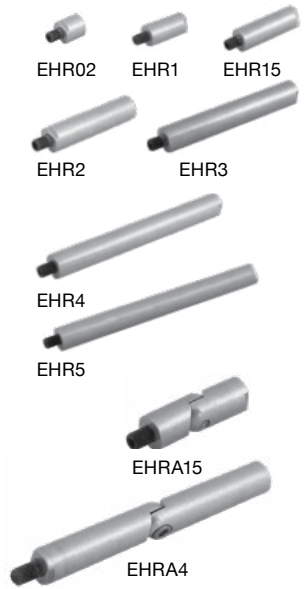


EH42 Floor, double



EH Series Magnetic Door Holder & Releasing Device Accessories

Distributor Discount Code **V**



EXTENSION RODS LIST

Refer to Figure A to determine correct rod length for each individual openings installation and adjustability requirements

Model	Description	
EHRO2	1/2" Extension Rod	22.00
EHR1	1" Extension Rod	22.00
EHR15	1-1/2" Extension Rod	26.00
EHR2	2" Extension Rod	33.00
EHR3	3" Extension Rod	33.00
EHR4	4" Extension Rod	44.00
EHR5	5" Extension Rod	54.00

ADJUSTABLE EXTENTION ROD LIST

Model	Description	
EHRA15	1-1/2" Adjustable Extension Rod	26.00
EHRA4	4" Adjustable Extension Rod	44.00

SPECIFY FINISH Add to List

Finish	Description	
A	Chrome Powder Coat	N/C
C	605 Brass Plated	14.00

OPTIONS & ACCESSORIES LIST

Model	Description	
EHBB	Surface Back Box 2-25/32" x 4-7/8" x 1-1/2" (71mm x 124mm x 38mm) Supplied with EH30, EH40, EH42	44.00
EHCP	Catch Disk Only Replacement for the catch plate assembly	33.00
EHSBA	Catch Plate Assembly	54.00
EHDF	Drilling Fixture Attach to door for quick and accurate hole location	214.00
EHW	Extension Wrenches Used to tighten extension rods to catch plate assembly	7.00

SPECIFY FINISH FOR SURFACE BACK BOX EHBB Add to List

Finish	Description	
A	Chrome Powder Coat	N/C
C	605 Brass Plated	40.00

How To Determine Extension Rod & Adjustable Rod Length

Extensions Rod Application: Refer to Fig. A for Aligned Catch Plate and Door Holder
Adjustable Rod Application: Refer to Fig. B for Misaligned Catch Plate and Door Holder

1. Hold door open at desired position.
2. Measure distance between door and wall.
3. Subtract below dimension indicated for door holder style

Flush Mount: Subtract 3" (76mm) from measured distance to determine minimum rod length.

Recessed Mount: Subtract 2-3/8" (60mm) from measured distance to determine minimum rod length.

Surface Mount: Subtract 4-5/8" (76mm) from measured distance to determine minimum rod length.



SECURITY DOOR CONTROLS
 801 Avenida Acaso • Camarillo, CA 93012
 Email: Service@sdcsecurity.com • www.sdcsecurity.com