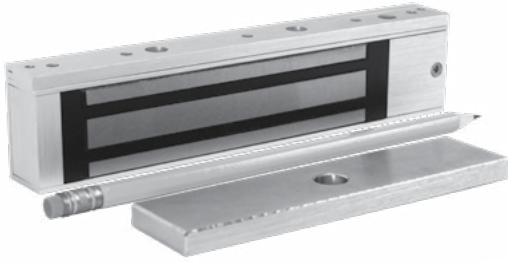


## Excel™ E300 Architectural Series Micro Cabinet Lock

Distributor Discount Code **GK LIST**



- Lock status
- Interlocking quick mount assembly
- Self drilling and tapping mounting screws and machine screws
- Adjustable mounting bracket
- Wire access chamber with terminal block
- Dual voltage 12/24VDC
- 628 Clear anodized aluminum

### MODEL

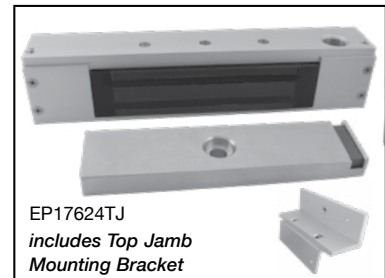
**E300** 300 lb / 136 kg with door status, locked status and LED **182.00**

## EP17624 Explosion Proof EMLock®

Distributor Discount Code **GK**



EP17624



EP17624TJ  
includes Top Jamb  
Mounting Bracket

### SPECIFICATIONS

**Holding Force** 600 lbs  
**Input Voltage** 24 VDC  
**Current** 250mA @ 24VDC

### DIMENSIONS

**EP17624 lock** 10.5"L x 2"H x 1.75"D  
**EP17624TJ lock** 10.5"L x 2.25"H x 1.75"D  
**Armature** 7.125"L x 1.75"H x 0.75"D  
**Door Status Sensor** SPDT contact, 100mA max.  
@ 30VDC max

MODEL	DESCRIPTION	LIST
<b>EP17624</b>	Single Explosion Proof Magnetic Lock, side conduit location, 628 Aluminum, for use on push-side of door, conduit on side block	<b>2,559.00</b>
<b>EP17624TJ</b>	Single Explosion Proof Magnetic Lock, top conduit location, 628 Aluminum, includes Top Jamb mounting bracket, for use on pull-side of door, conduit on top	<b>2,666.00</b>

This unit is intended to be used in the following atmospheres: Acetone, Ammonium Hydroxide, ATSM fuel C, Benzene, Methyl-Ethylketone, Diethyl-Ether, 2-Nitropropane, Ethyl-Acetate, Furfural, Normal Hexane, Methyl Alcohol. Operating temperature for the magnetic lock will not exceed 185° F (85° C). Maximum ambient temperature is not to exceed 104° F (40° C). For supply connections, use a suitable wire with a minimum insulation temperature rating of 167° F (75° C). This unit must be connected to a NEC (National Electric Code, NFPA 70) Class 2 Supply Circuit rated for 24 VDC with a minimum current output of 0.5 amperes and output power of 12 watts. A UL Listed SDC 600 Series Power Controller is recommended.

## 1591 MORTISE EMLock® for Sliding Doors



Distributor Discount Code **GK LIST**



1591

**Holding Power 850lbs.**  
**Selectable Voltage:** 12VDC @ 800 mA, 24VDC @ 400 mA  
**Finish:** U 630 Stainless Steel  
**Dimensions:** 10"L x 1-7/16"H x 1-1/4"D

### MODEL

**1591U** Single EMLock® for sliding doors **374.00**

### ACCESSORIES

Add to List

**LAB** Surface mount armature angle bracket for 1591 on sliding doors **59.00**

**AMP** Armature mounting plate for leading edge of door **49.00**

**DPS** Door position sensor for 1591 EMLock® **59.00**

**BR64XL** Rectifier **27.00**

## Emergency Door Release

Distributor  
Discount Code

**V LIST**



491



492



**CSFM Listed**



SDC 490 series emergency door release stations include 2-SPDT contacts for release of all doors on the same circuit and remote annunciation. A built-in local alarm is standard.

<b>491</b>	Blue break glass station, emergency door release, 2-SPDT 10 Amp contacts with built-in local alarm (12/24V), 2 replacement glass included. Single gang box mounted	<b>197.00</b>
<b>491-GL4</b>	Four replacement glass plates for 491	<b>22.00</b>
<b>491-BB</b>	Blue surface mount box for 491	<b>65.00</b>
<b>492</b>	Blue pull station, emergency door release, 2-SPDT 10 Amp contacts with built-in local alarm (12/24V), 2 replacement glass rods included. Single gang box mounted.	<b>161.00</b>
<b>492-GL4</b>	Four replacement glass rods for 492	<b>22.00</b>
<b>492-BB</b>	Blue surface mount box for 492	<b>44.00</b>

## Explosion Proof Pull Station

Distributor Discount  
Code

**LIST**



### SPECIFICATIONS

<b>Contact</b>	DPDT	Class I, Group B, C, D
<b>Contact rating</b>	10 amps @ 125/250 VAC	Class II, Group E, F, G
<b>Wire AWG</b>	12 to 22 AWG	Class III
<b>Wiring</b>	Terminal Black Connection	Type 4X (outdoor)

<b>EP493</b>	Explosion Proof Pull Station	<b>850.00</b>
--------------	------------------------------	---------------

Egress Controls

## Communicating Bathroom Controls

Distributor  
Discount Code

**CK LIST**



CB401-A  
CB402-A



CB401-B  
CB402-B

### EmLock®

<b>CB401-AU</b>	Communicating bath switch, 630 Stainless Steel finish.	<b>124.00</b>
<b>CB401-B</b>	Emergency access switch, red. 2 Required	<b>129.00</b>
<b>CB701</b>	Emergency key switch, red	<b>161.00</b>

### Electrified Lockset, HiTower® , or Strike Application

<b>CB402-A</b>	Communicating bath switch, U 630 Stainless Steel finish.	<b>124.00</b>
<b>CB402-B</b>	Emergency access switch, red. 2 Required	<b>129.00</b>
<b>CB702</b>	Emergency key switch, red	<b>161.00</b>

## 450 SERIES - Vandal Resistant ALUMINUM Exit Switch

Distributor Discount Code

**LIST**



451  
452  
453

451N  
452N  
453N

Stainless Steel Button - 1/4" Thick Aluminum Plate - Security Screws - Plated Finish Not Available

1 Gang	Narrow	Contact	Sign	
451V	451NV	AA (On/Off) SPDT	None	161.00
452V	452NV	Momentary SPDT	None	161.00
453PV	453PNV	Integrated Pneumatic Timer ADJ. 1-180 sec. SPDT contact	None	454.00

## Explosion Proof Exit Switch

Distributor Discount Code

**LIST**



### SPECIFICATIONS

**Contact** 1 N.O. and 1 N.C., momentary  
**IIEC Rating** DC60V 5A DC-13  
**Operating Temperature** -50° C to 60° C

**DIMENSIONS** 3.95 W X 4.21 H X 4.16" D

Class I, Zone 1, AEx de IIC T6...T4 Gb / Ex de IIC T6...T4 Gb X  
 Zone 21, AEx tb IIC T85°C...T135°C Db IP66 / Ex tb IIC T85°C...T135°C Db IP66 X  
 Class I, Division 2, Groups A, B, C, D  
 Class II, Division 2, Groups E, F, G  
 Class III  
 UL50, 50E, 508, UL60079-0, -1, -7, -31  
 Type 3, 4, 4X, 12, 13

**EP499** Explosion Proof Exit Switch (specify Green or Red Button) **2,447.00**

## Passive Infrared Egress Control

Distributor Discount Code

**V LIST**



<b>MD-31DOW</b>	Motion detector with time delay, white	243.00
<b>MD-31DB</b>	Motion detector with time delay, black	243.00

## Time Delay Relay

Distributor Discount Code

**CK List**



### Time Delay Relays

<b>10TD</b>	Time delay relay module with adjustable 1-60 second relock delay. <b>Input:</b> 12/24V AC/DC <b>Voltage:</b> 2 Amps @ 30 VDC (resistive)	<b>Output:</b> SPDT, dry contact <b>Size:</b> 2-1/4"x 1-1/2" x 3/4"	<b>91.00</b>
-------------	--	--	--------------

**SDC**

**SECURITY DOOR CONTROLS**  
 801 Avenida Acaso • Camarillo, CA 93012  
 Email: Service@sdccsecurity.com • www.sdccsecurity.com

## Door Position Sensors

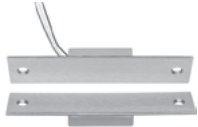
Distributor Discount Code **V LIST**



DPS-11  
DPS-11-2



MC-4



MC-4M

<b>DPS-11</b>	Adjustable ball type SPDT 5 Amp	<b>49.00</b>
<b>DPS-11-2</b>	Adjustable ball type 2 SPDT 5 Amp	<b>71.00</b>
<b>MC-4</b>	Recessed magnetic (3/4", SPDT, 30VDC, 50mA)	<b>52.00</b>
<b>MC-4PAK</b>	Recessed magnetic (3/4", SPDT, 30VDC, 50mA) - 10 pack	<b>321.00</b>
<b>MC-4M</b>	Recessed magnetic mounted on 1-1/4" x 4-7/8" plate	<b>91.00</b>
<b>MC-4-2</b>	Recessed magnetic (3/4", DPDT, 30VDC, 50mA)	<b>67.00</b>
<b>MC-7</b>	Biased high security recessed magnetic (1", SPDT, 30VDC, 50mA)	<b>71.00</b>

## Explosion Proof Magnetic Door Contact

Distributor Discount Code **V LIST**



Specifically designed for applications where flammable vapors are cause for concern, like clean room, chemical plant, or refinery environments. UL listed for use in hazardous locations CLASS I, Division 1 & 2, Group C,D; CLASS II, Division 1 & 2, Group E, F and G; Class III, Division 1 & 2

- Explosion Proof Die Cast Aluminum
- Hermetically Seals Reed Switch Encapsulated in Polyutherane

<b>EP-MC</b>	Explosion Proof Door Contact	<b>515.00</b>
--------------	------------------------------	---------------

## UME Universal Module Enclosure

**NK**



Universal Module Enclosure for single modules  
Universal mounting standoffs will accomodate  
FB-4, UR-1, 12VR, ACM-1, PB-16, PB-8, PSM, 621B, or LR100EM boards.  
Box Dimensions: 5-5/8"H x 7-11/16"W x 3-3/8"D

<b>UME</b>	Single module enclosure	<b>33.00</b>
------------	-------------------------	--------------

## Emergency Access Panel

Distributor Discount Code **CK LIST**



<b>APB1000A</b>	Emergency access panel for lobby door system. Mushroom button with key reset and siren	<b>374.00</b>
-----------------	--	---------------