



INSTALLATION INSTRUCTIONS

LRS51L S5000 LATCH MONITORING KIT

Applications

Remote Latch Status Monitoring: Retracting the latch by depressing the push pad provides an output signal for local or remote visual and audible annunciation indicating forced entry or unauthorized egress.

Access Control REX: When connected to the Request-To-Exit input of a keypad, card or biometric Access Controller, depressing the pushpad and retracting the latch actuates the Latch Status contact, shunting the control access control alarm to permit authorized egress and/or releases the magnetic door lock for uninhibited egress.

Magnetic Lock Release: Where Access Controller with REX input is unavailable, the N/C contact of the switch is wired in series between the power supply and fail safe magnetic lock. Depressing the exit device pushpad retracts the latch, causing the contact to open, thereby releasing the magnetic lock for uninhibited egress.

Mantrap Logic: Provides N/O and N/C contacts required for 2 or more communicating doors for Interlock and Mantrap applications.

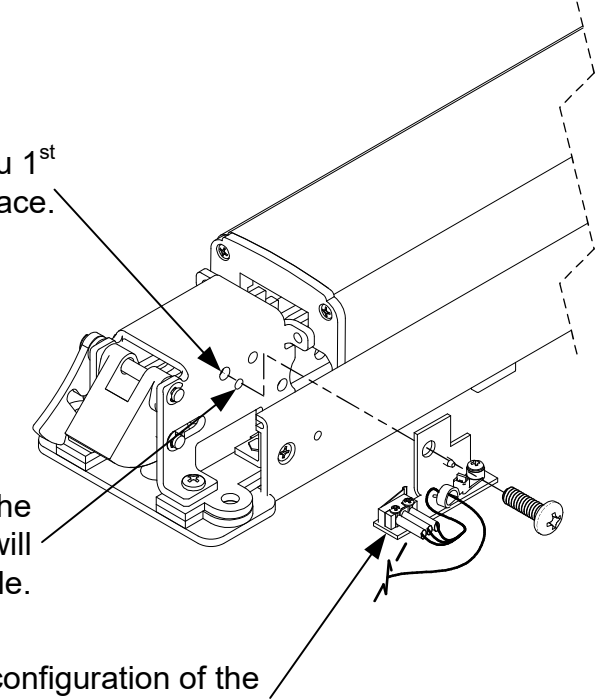
COM - WHITE
N/C - RED
N/O - GREEN
5 AMP @ 250VAC

For Rim Latch

Tap 1/4-20 thru 1st surface.

Pin head on the LRS51L bracket will fit in this hole.

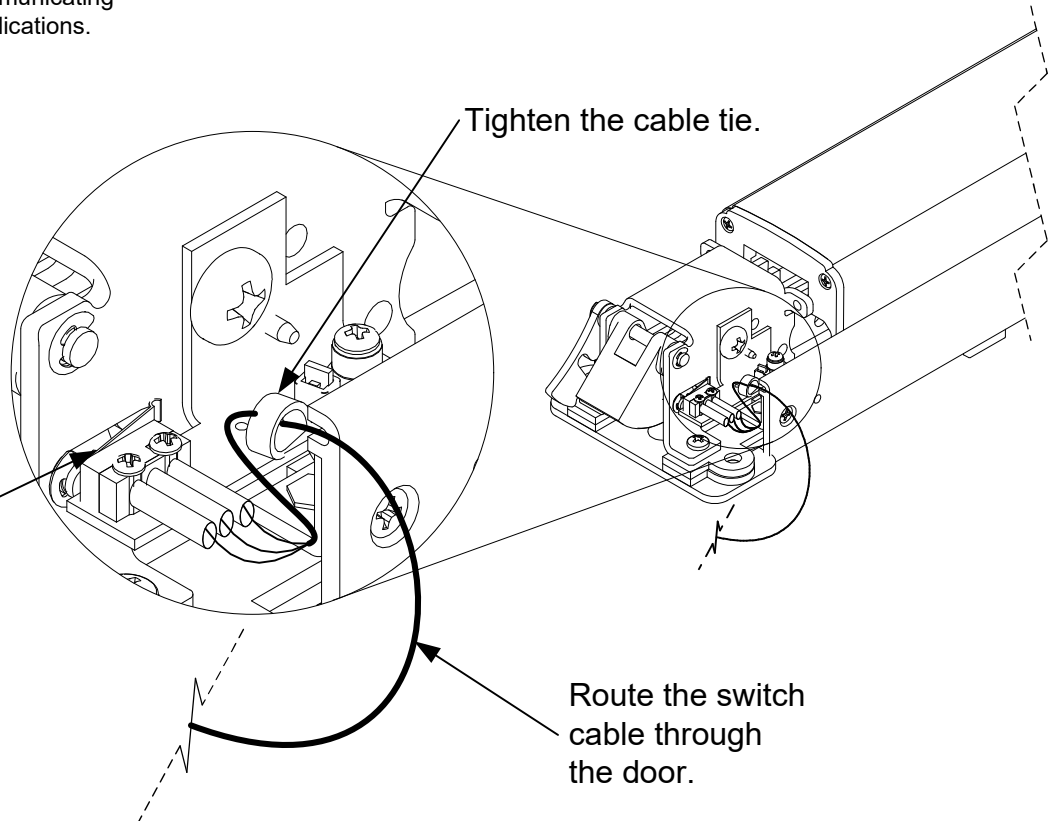
Use this configuration of the LRS51L for rim latch.



Tighten the cable tie.

Route the switch cable through the door.

The switch arm may have to be slightly adjusted to make proper contact with the device.





For Vertical Rod

Tap ¼-20 thru 1st
surface.

Pin head on the LRS51L
bracket will fit in this hole.

Use this configuration of the LRS51L
for vertical rod.

Tighten the cable tie.

The switch arm may
have to be slightly
adjusted to make
proper contact with
the device.

Route the switch cable
through the door.