

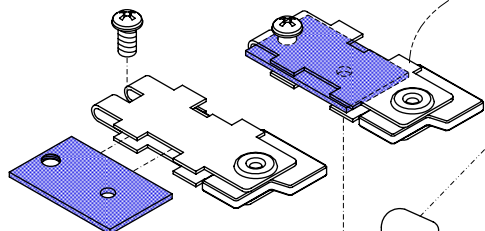
# SDC Security Door Controls

801 Avenida Acaso, Camarillo, Ca. 93041 • (805) 494-0622 • Fax: (805) 494-8861  
 www.sdcsecurity.com • E-mail: service@sdsecurity.com

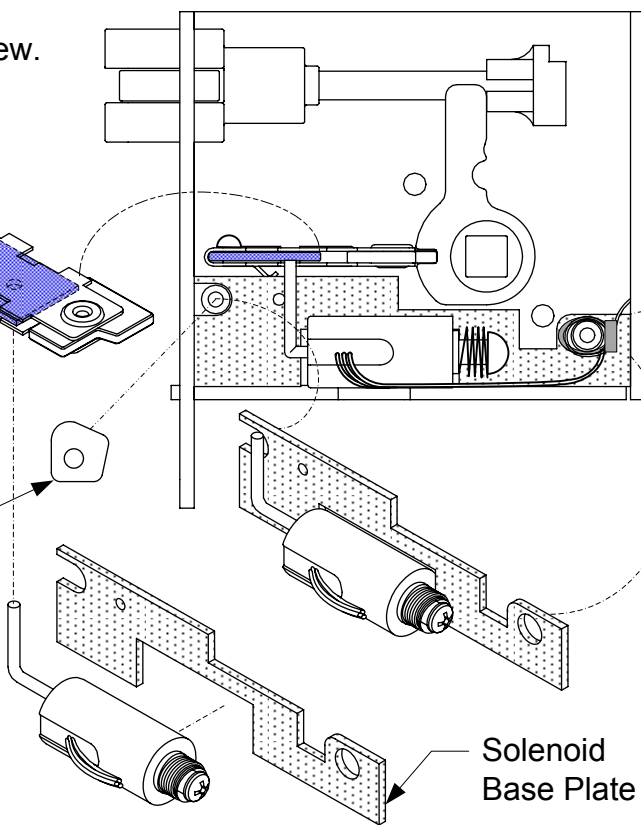
## INSTALLATION INSTRUCTIONS SK-88 FIELD ELECTRIFICATION KIT YALE 8805 MORTISE LOCKSET

1

Remove Locking Bar and insert Adapter Plate as shown with supplied screw.

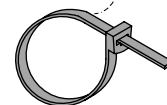


Remove and discard existing component located here.



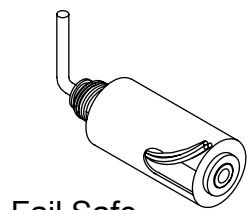
2

Place Solenoid Base Plate into position. Secure with screw through back of case.



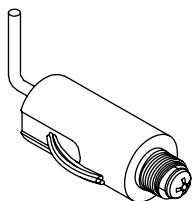
3

Route wires around post and through case as shown. Use cable tie as strain relief and position it to avoid interference with the lever mounting.

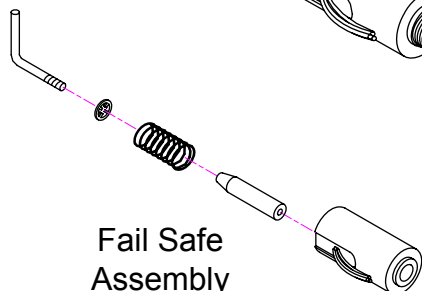


Fail Safe

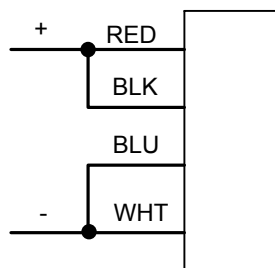
or



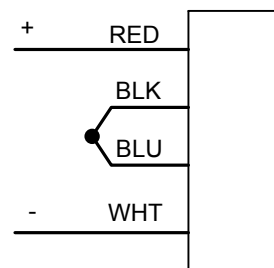
Fail Secure (shown)



Fail Safe Assembly



12 VDC @ .6 AMP



24 VDC @ .3 AMP

Dual Coil Solenoid