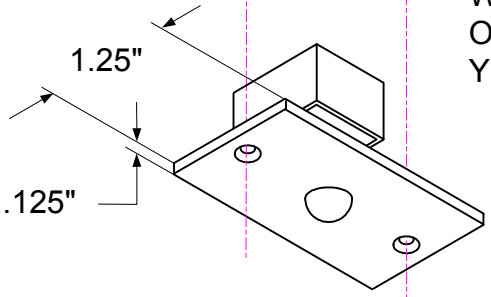
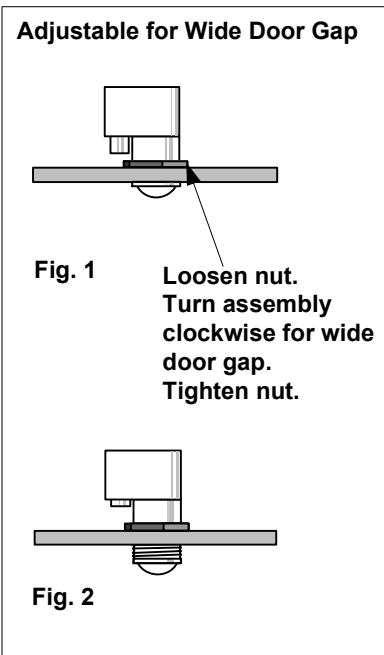
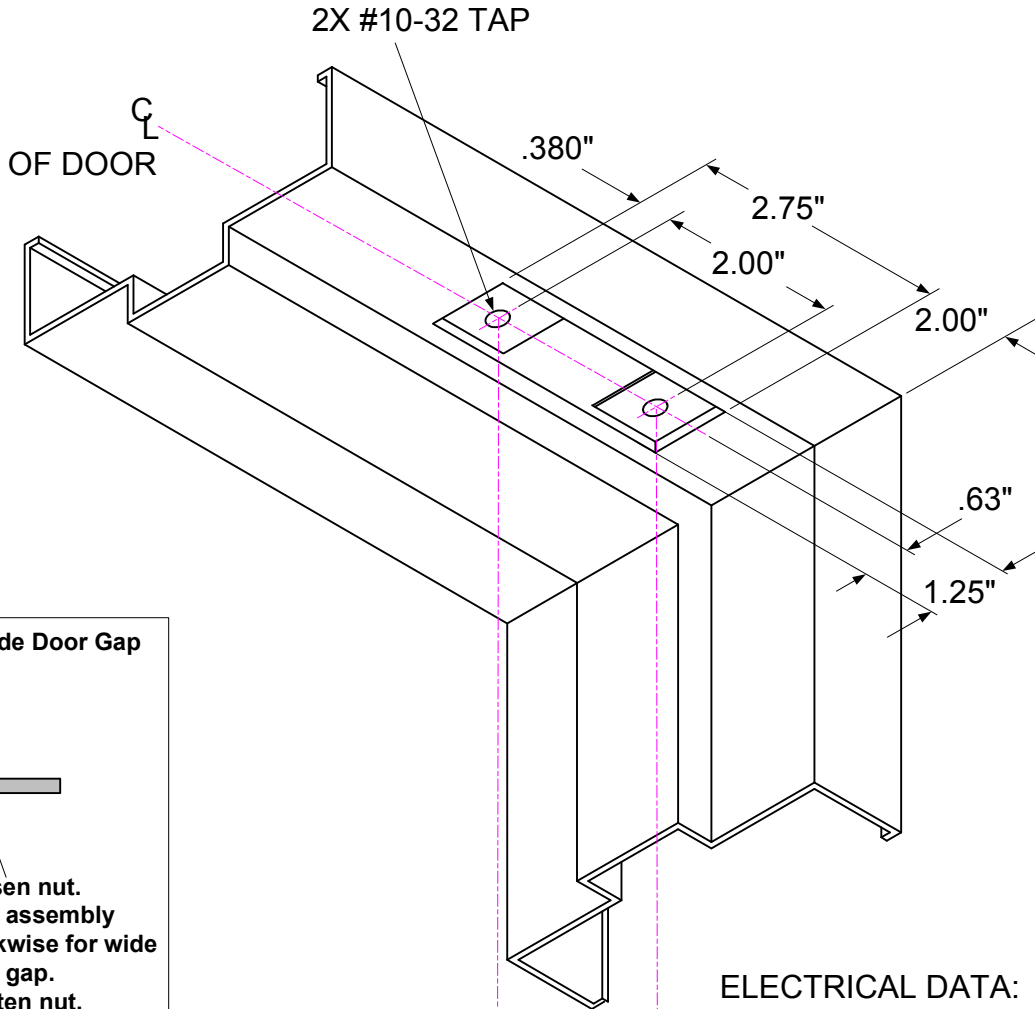


# SDC Security Door Controls

801 Avenida Acaso, Camarillo, Ca. 93012 • (805) 494-0622 •  
 www.sdcsecurity.com • E-mail: service@sdsecurity.com

## INSTALLATION INSTRUCTIONS DPS-11



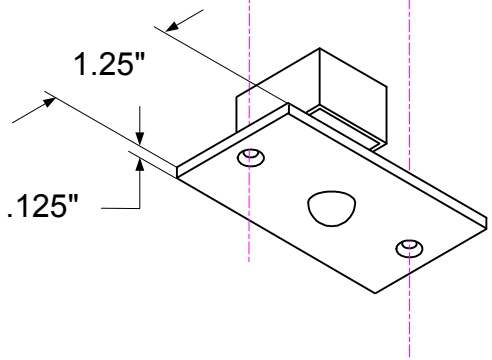
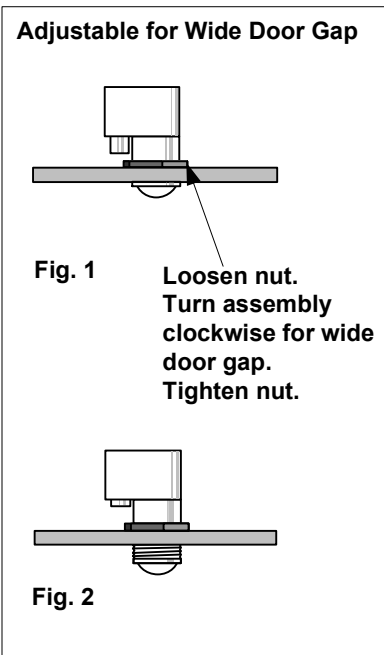
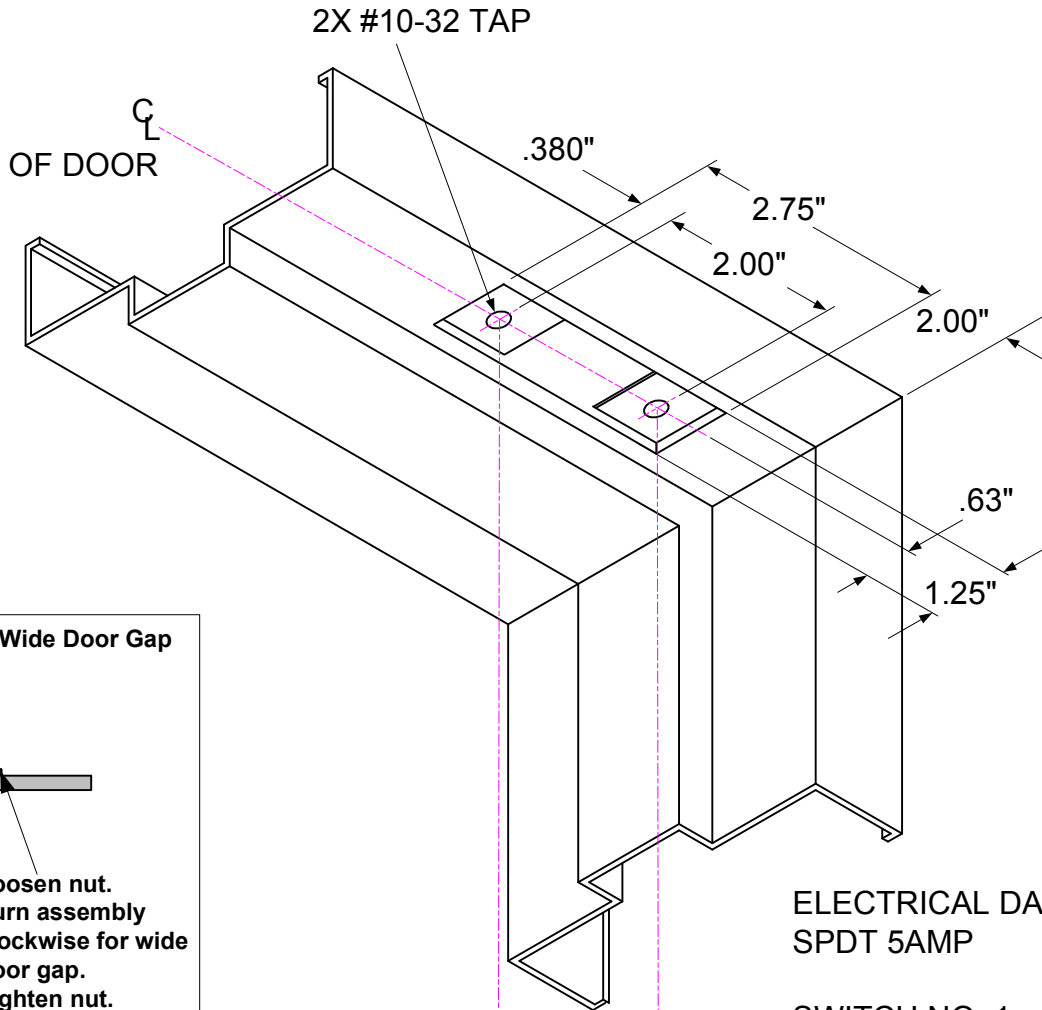
**ELECTRICAL DATA:**  
 SPDT 5AMP  
 WHITE – COMMON  
 ORANGE – NORMALLY CLOSED  
 YELLOW – NORMALLY OPEN

(DOOR CLOSED POSITION)

# SDC Security Door Controls

801 Avenida Acaso, Camarillo, Ca. 93012 • (805) 494-0622 •  
 www.sdcsecurity.com • E-mail: service@sdsecurity.com

## INSTALLATION INSTRUCTIONS DPS-11-2



**ELECTRICAL DATA:**  
 SPDT 5AMP

**SWITCH NO. 1**  
 WHITE – COMMON  
 ORANGE – NORMALLY CLOSED  
 YELLOW – NORMALLY OPEN

**SWITCH NO. 2**  
 WHITE – COMMON  
 RED – NORMALLY CLOSED  
 BLUE – NORMALLY OPEN

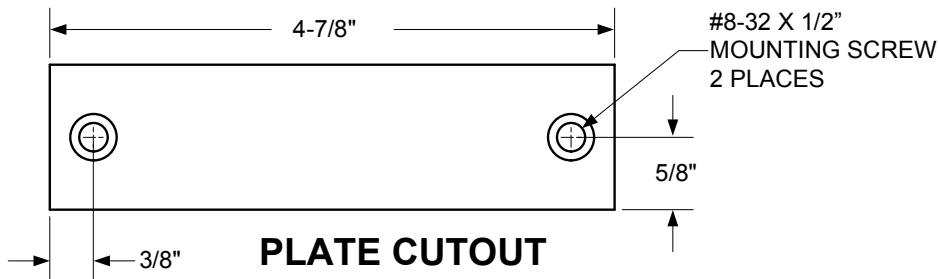
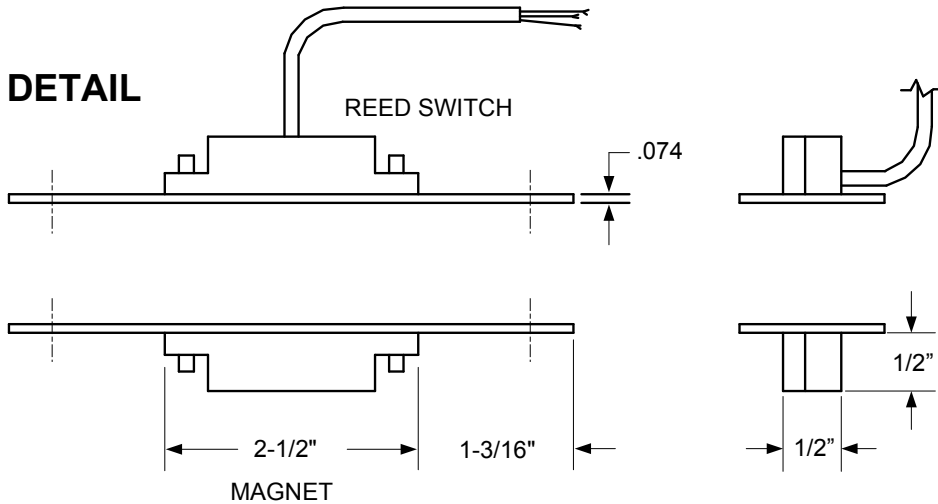
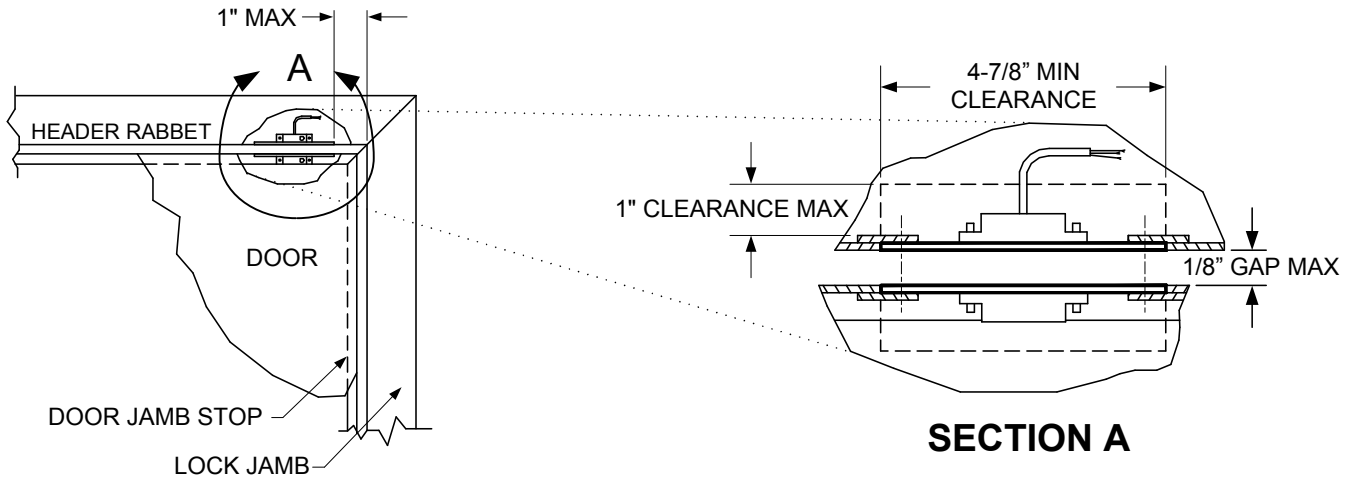
(DOOR CLOSED POSITION)

Any suggestions or comments to this instruction or product are welcome. Please contact us through our website or email [engineer@sdsecurity.com](mailto:engineer@sdsecurity.com)

# SDC Security Door Controls

801 Avenida Acaso, Camarillo, Ca. 93041 • (805) 494-0622 • Fax: (805) 494-8861  
 www.sdcsecurity.com • E-mail: service@sdsecurity.com

## TEMPLATE MC-4MV



**ELECTRICAL DATA**  
 BLACK – COMMON  
 RED – N/C  
 WHITE – N/O  
 (DOOR CLOSED POSITION)

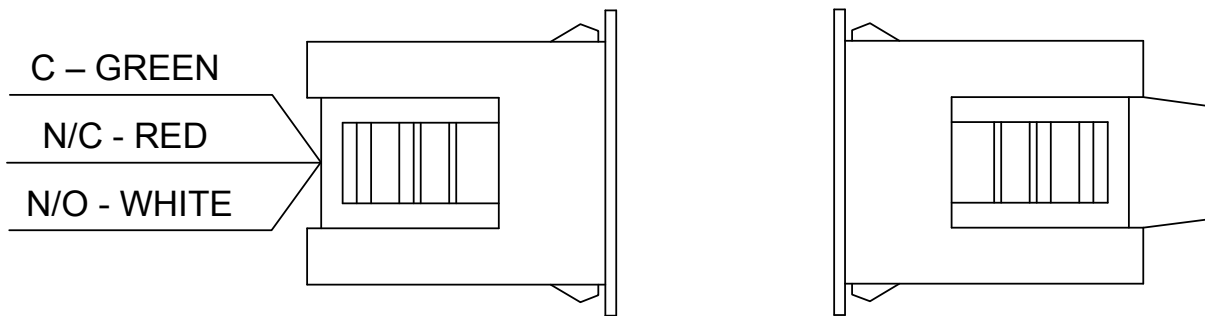
Any suggestions or comments to this instruction or product are welcome. Please contact us through our website or email [engineer@sdsecurity.com](mailto:engineer@sdsecurity.com)



**Security Door Controls**

801 Avenida Acaso, Camarillo, Ca. 93012  
• (805) 494-0622 • [www.sdcsecurity.com](http://www.sdcsecurity.com)  
E-mail: [service@sdsecurity.com](mailto:service@sdsecurity.com)

**TEMPLATE MC-4 MAGNETIC CONTACT SWITCH**



(DOOR CLOSED POSITION)

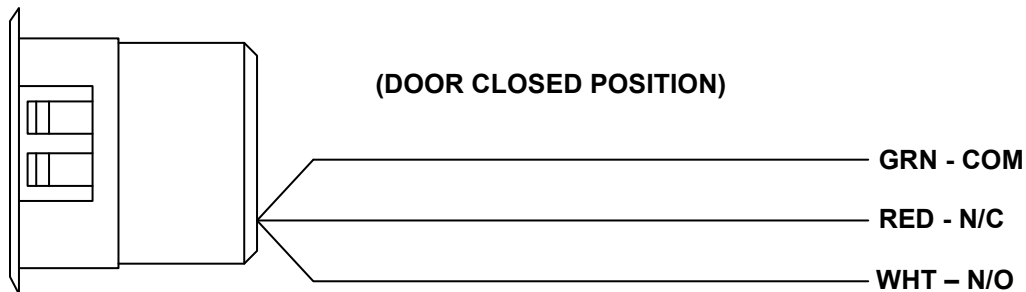
**NOTE: HOLE PREP IS 3/4" DIAMETER x 1" DEEP**



# SECURITY DOOR CONTROLS

801 Avenida Acaso, Camarillo, Ca. 93012 • (805) 494-0622 • Fax: (805) 494-8861  
www.sdcsecurity.com • E-mail: service@sdsecurity.com

## MC-7 WIRING INSTRUCTIONS SELF LOCKING MAGNETIC CONTACT



**NOTE:** HOLE PREP. IS 1" DIAMETER x 1-1/4" DEEP

### Applications

#### Remote Latch Status Monitoring:

Retracting the latch by depressing the push pad provides an output signal for local or remote visual and audible annunciation indicating forced entry or unauthorized egress.

**Access Control REX:** When connected to the Request-To-Exit input of a keypad, card or biometric Access Controller, depressing the pushpad and retracting the latch actuates the Latch Status contact, shunting the control access control alarm to permit authorized egress and/or releases the magnetic door lock for uninhibited egress.

**Magnetic Lock Release:** Where Access Controller with REX input is unavailable, the N/C contact of the switch is wired in series between the power supply and fail safe magnetic lock. Depressing the exit device pushpad retracts the latch, causing the contact to open, thereby releasing the magnetic lock for uninhibited egress.

**Mantrap Logic:** Provides N/O and N/C contacts required for 2 or more communicating doors for Interlock and Mantrap applications.