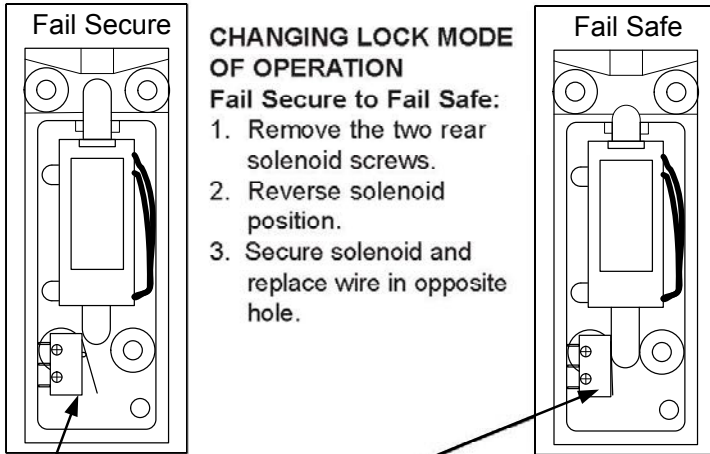


SDC Security Door Controls

801 Avenida Acaso, Camarillo, Ca. 93012 • (805) 494-0622 •
 www.sdcsecurity.com • E-mail: service@sdsecurity.com

INSTALLATION INSTRUCTIONS 290 CABINET LOCK

The cabinet lock is designed to be installed into cabinets and lockers, etc., with either swing or sliding doors. The lock is supplied in the "FAIL SECURE/POWER TO OPEN" configuration as the initial factory setting.

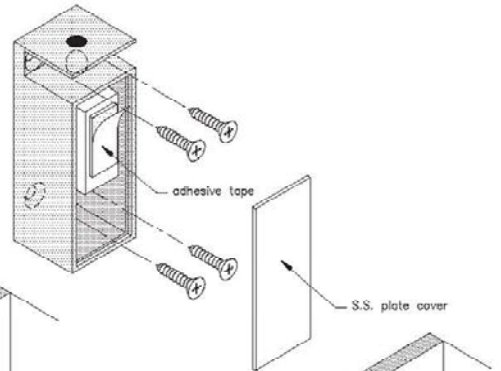
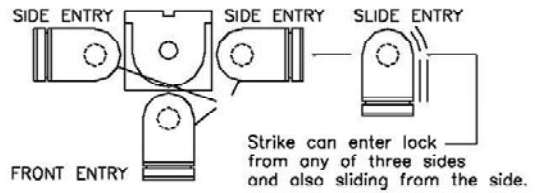


CHANGING LOCK MODE OF OPERATION

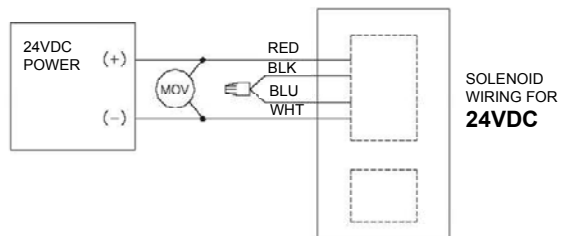
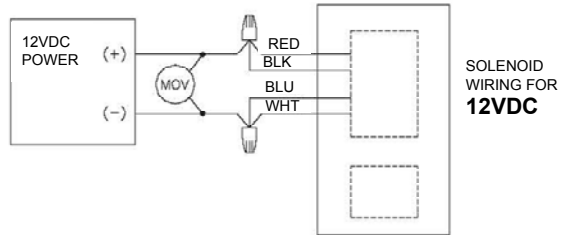
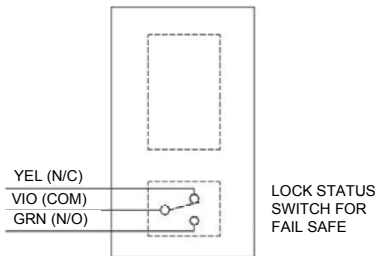
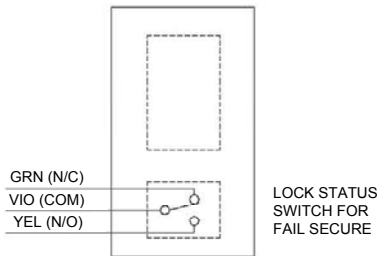
Fail Secure to Fail Safe:

1. Remove the two rear solenoid screws.
2. Reverse solenoid position.
3. Secure solenoid and replace wire in opposite hole.

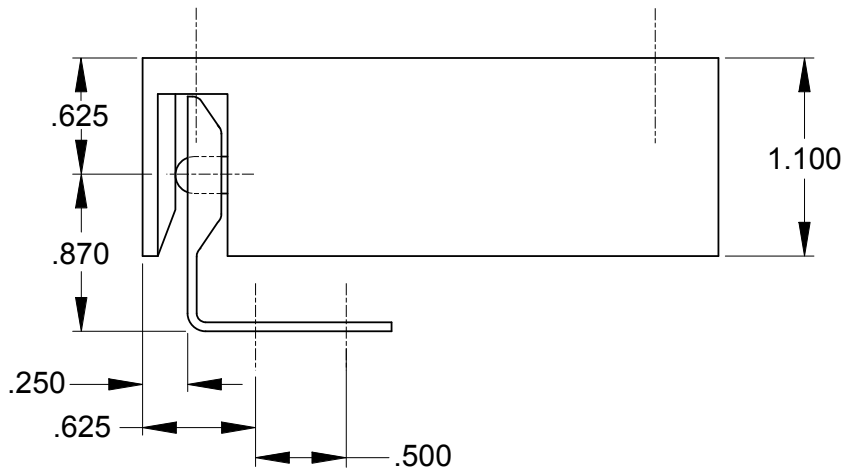
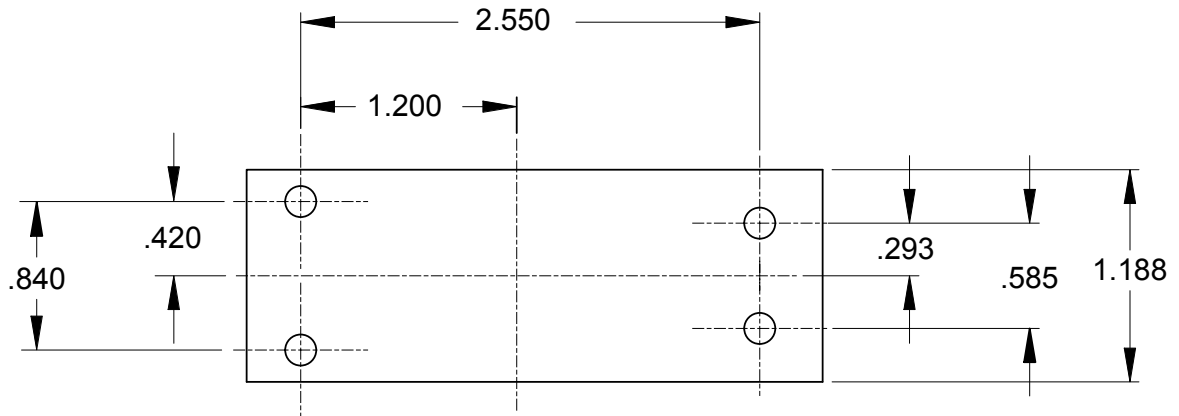
Lock status sensor is optional



ELECTRICAL SPECIFICATION: Dual Voltage - 300/150 mA@ 12/24VDC



290 CABINET LOCK MOUNTING TEMPLATE



DRAWING MAY NOT BE TO SCALE.
USE DIMENSIONAL CALL-OUTS ONLY.