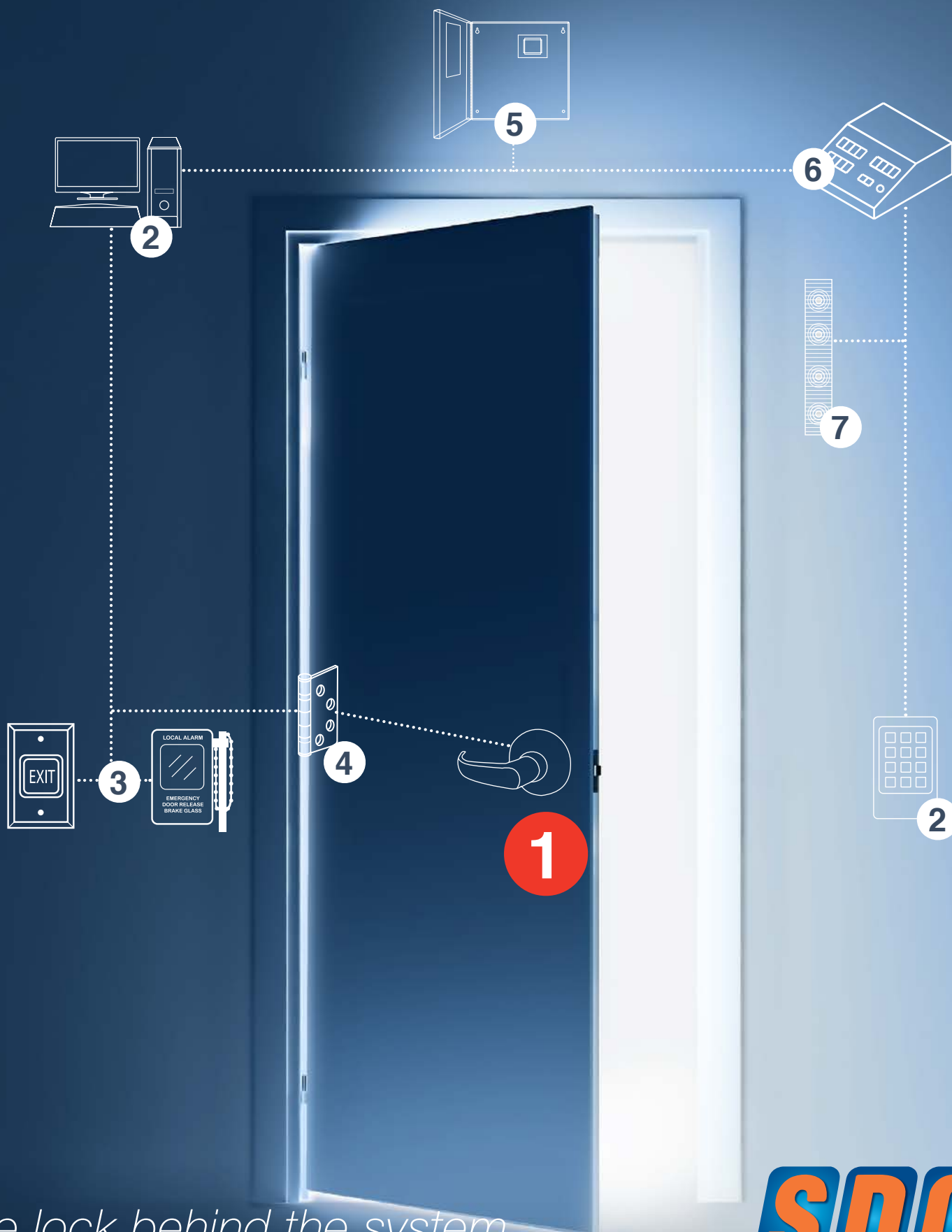


ACCESS & EGRESS SOLUTIONS

LOCKING DEVICES

1.6 Electric Bolt Locks



The lock behind the system

SDCSecurity.com

800.413.8783

service@sdcssecurity.com

SDC
Security Door Controls

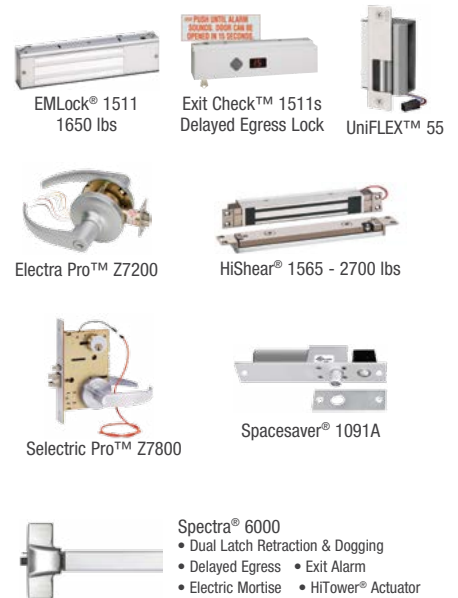
Complete Component Considerations

Standalone



1 Locking Device

- Electric Strike
- Delayed Egress Lock
- Electric Bolt Lock
- Electrified Lockset
- Exit Device
- Frame Actuator Lockset
- Magnetic Lock



2 Access Control

Standalone or Network

- Keyswitch
- Digital Keypad
- Card Reader



3 Egress Device

- Exit Switch
- PIR Egress Sensor
- Exit Sense Bar
- Emergency Door Release
- ADA Compliant Solutions



4 Power Transfer Devices

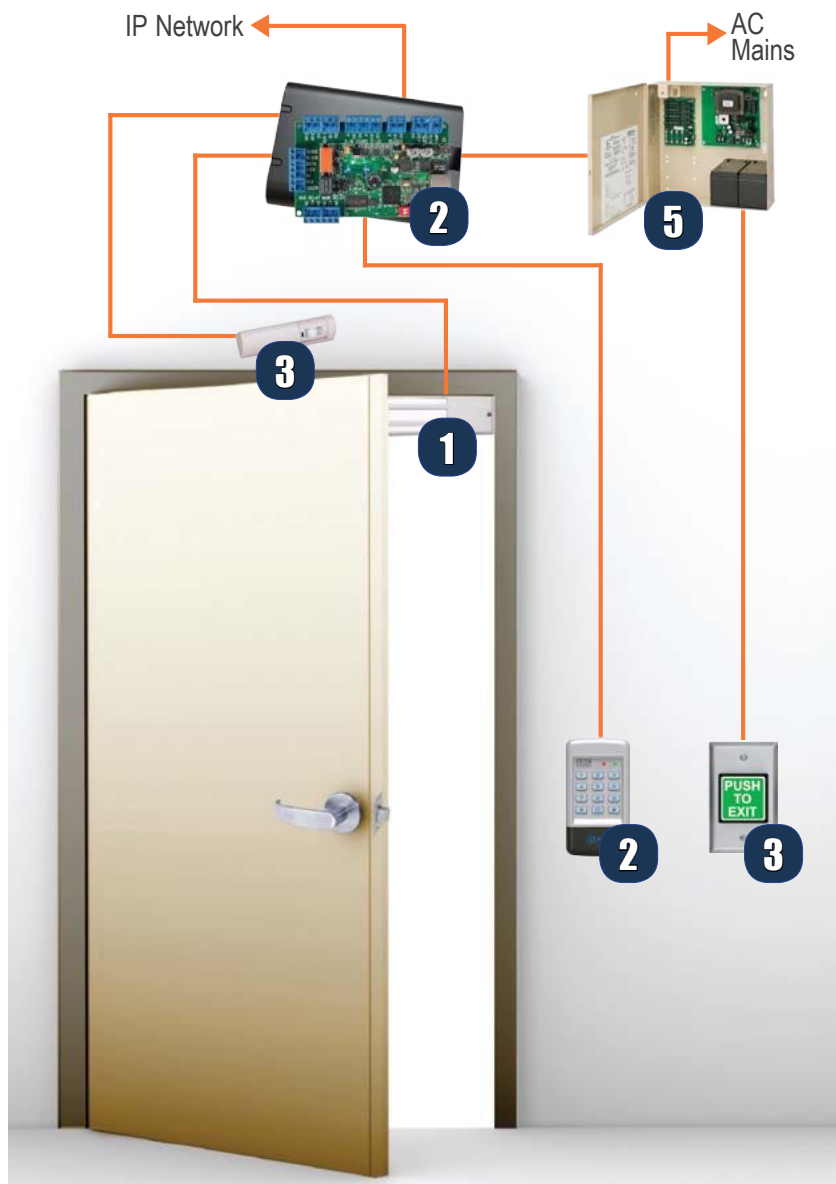
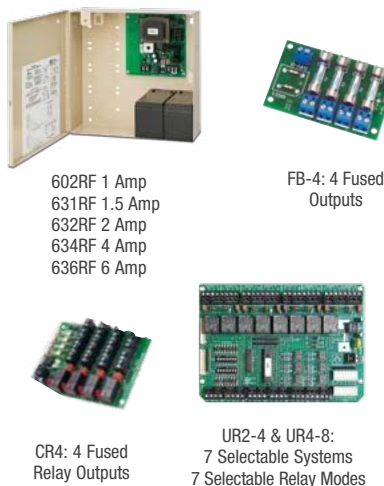
Required With Locksets & Exit Devices

- Electric Power Hinge
- Power Transfer Loop
- Concealed Power Transfer



5 Power Supply & Door Controller

- 12/24VDC, Class 2
- Fire release input
- System Status LED's
- Multiple Fused Outputs
- Multiple Relay Configurations
- Universal Programmable Controllers



6 Remote Controls



7 Annunciators



8 Accessories & Misc

- Magnetic Door Holder Release Device



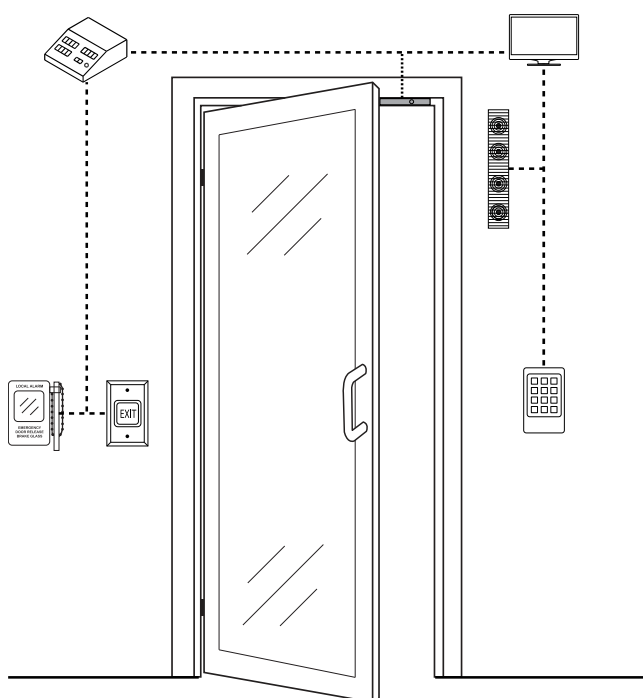


Electric Bolt Locks

Recommended for high security interior door and cabinet applications where electromagnetic locks are not required.

The SDC family of electric bolt locks include long life solenoid driven direct throw mortise bolts, **Spacesaver®** right angle bolts for narrow frames and door stiles and surface mounted bolt locks for door and cabinet applications. Compatible with virtually any access control system, electromechanical bolt locks are available in failsafe and failsecure modes.

As the inventor of numerous electronic lock designs, SDC founder **Art Geringer** is credited with ushering in the modern era of access control hardware with his development of the 90° throw electric lock. Now commonly used, this creation opened the potential of electric locking capabilities and began the great migration to electric locking systems.



1090 / 1290 Spacesaver® Bolt Locks

The **Spacesaver®**, first designed and patented by SDC, is a fundamental innovation in electric locking technology for access control applications.



FEATURES

STAINLESS STEEL BOLT

Greater security is provided by the 0.625" diameter solid stainless steel bolt. The bolt rotates freely, making attempts to tamper or cut extremely difficult.

SPECIFICATION GRADE SOLENOID

All Spacesaver® lock solenoids are manufactured by SDC to precision specifications. SDC solenoids are capable of superior overall performance in both force and longevity, providing years of service compared to commercial grade solenoids.

CODE COMPLIANT

Classified in accordance with Uniform Building Code standard 7-2, "Fire Test for Door Assemblies"

FIELD ADJUSTABLE AUTO-RELOCK SWITCH

The automatic relock switch keeps the bolt retracted while the door is open. The door depresses the ball switch assembly on closure, causing the bolt to project automatically, locking the door. In addition, the ball switch assembly is bidirectional, permitting the locks to be used on swinging and sliding doors.

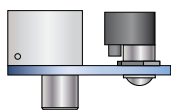


Fig. 1

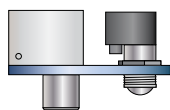
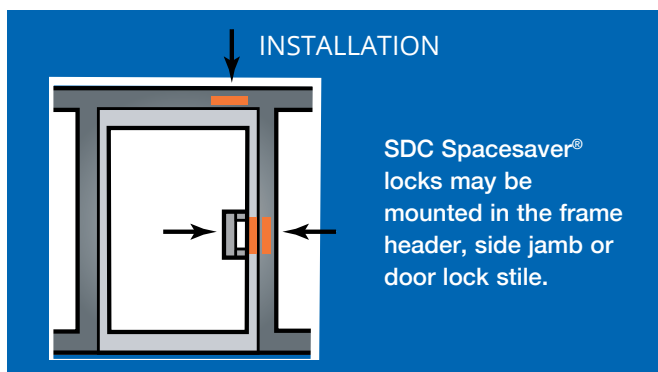


Fig. 2

The auto relock assembly is field adjustable to compensate for wide door gap. (See Figure 1 & 2 above)



The stainless steel bolt projects at right angles to the lock mechanism, allowing installation of Spacesaver® locks, by means of a simple cutout, in virtually any standard 1.75" frame, or in most door lock stiles. With the entire lock concealed, aesthetic acceptability is complete, security is greater and installation in old or new construction is fast, easy and economical.



MODELS



1091AI

Fail-safe 12/24VDC

1091AIWD

Fail-safe 12/24VDC, with 8-1/2" x 1-1/2" x 1/8" faceplate, specifically for wood frames

1091ADLI

Fail-safe Deadlocking 12/24VDC

1091ADLWDI

Fail-safe Deadlocking 12/24VDC with 8-1/2" x 1-1/2" x 1/8" faceplate, specifically for wood frames



1291AH

Fail-secure 12/24VDC

1291AHWD

Fail-secure 12/24VDC, with 9" x 1-1/2" x 1/8" faceplate, specifically for wood frames



LOCK FUNCTION

1091A FAILSAFE

The **1091A** is locked when energized. Recommended for safety applications, it is intended that the door unlock automatically when power is interrupted by the access control, power failure or signal from a fire life safety system.

- Bolt Throw 0.75"

The **1091ADL** is equipped with a deadlocking mechanism that prevents the bolt from being tampered with and pried to unlock. The 1091ADL has all the operational features of the 1091A (above) and is recommended for failsafe applications requiring a higher level of security.

1291A FAILSECURE

The **1291A** is locked when de-energized and unlocked when energized. Recommended for security applications only, it is intended that the door remains locked when power is interrupted by a power failure.

- Bolt Throw 0.625"

SPECIFICATIONS

Face Plate	8"L x 1-1/2"W x 1/8"D (unless noted differently)
Strike	4"L x 1-1/2"W x 1/8"D
Frame Inner Dimension Requirements	8"L x 1-1/2"W x 1-1/2"D See figure 4 below
Bolt Material	Solid Stainless Steel
Bolt Diameter	5/8"
Bolt Throw	1091A/1091ADL: 3/4" 1291A: 5/8"
Mounting Tabs	Two aluminum mounting tabs are provided for easy lock installation. See figure 3B below
Dual Voltage Coil	0.45 Amp @ 24VDC Continuous Duty 0.9 Amp @ 12VDC Continuous Duty
Weight	1.45 lbs

Figure 3A, 3B, 3C, 3D: Typical Frame Header or Side Jamb Installation

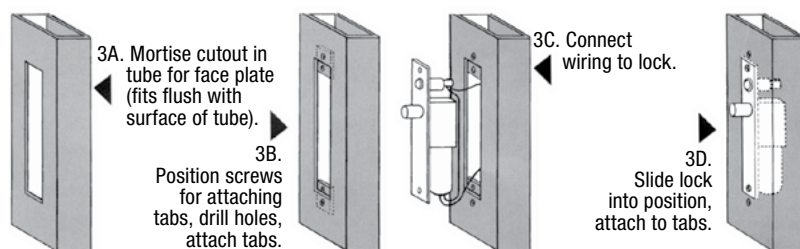
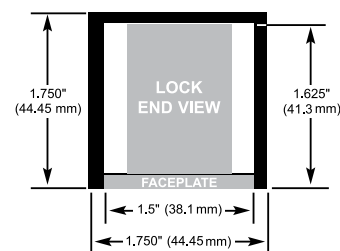


Figure 4: End View



PRODUCT SKU SAMPLE: **1091AI V D B**

HOW TO ORDER

1| SPECIFY MODEL

- 1091AI** Failsafe 12/24VDC
- 1091AIWD** Failsafe 12/24VDC, with 8-1/2" x 1-1/2" x 1/8" faceplate, specifically for wood frames
- 1091ADLI** Failsafe Deadlocking 12/24VDC
- 1091ADLWDI** Failsafe Deadlocking 12/24VDC, with 8-1/2" x 1-1/2" x 1/8" faceplate, specifically for wood frames
- 1291AH** Failsecure 12/24VDC
- 1291AHWD** Failsecure 12/24VDC, with 9" x 1-1/2" x 1/8" faceplate, specifically for wood frames

2| SPECIFY FINISH

- V** 628 Clear Anodized Aluminum (Standard)
- C** 605 Bright Brass
- D** 606 Dull Brass
- F** 611 Bright Bronze
- G** 612 Dull Bronze
- H** 613 Oil Rubbed Bronze
- P** 625 Bright Chrome
- Q** 626 Dull Chrome
- U** 630 Satin Stainless Steel
- Y** 335 Black Anodized

3| SPECIFY OPTIONS

- B** Magnetic Bolt Status Switch
SPDT 0.25 Amp @ 30VDC
Indicates bolt locked and bolt unlocked.
- D** Mechanical Door Position Switch
SPDT 5 Amps @ 30VDC
Integral to the auto relock ball switch assembly.
Indicates, door closed and door open. Recommended for minimum security applications only

1091ADMR / 1291ADMR Spacesaver®

Electric Dead Bolt Locks with Mechanical Release

The **Spacesaver®**, first designed and patented by SDC, is a fundamental innovation in electric locking technology for access control applications.

FEATURES

STAINLESS STEEL BOLT

Greater security is provided by the 0.625" diameter stainless steel bolt. The bolt rotates freely, making attempts to tamper or cut extremely difficult.

SPECIFICATION GRADE SOLENOID

All Spacesaver® lock solenoids are manufactured by SDC to precision specifications. SDC solenoids are capable of superior overall performance in both force and longevity, providing years of service compared to commercial grade solenoids.

MECHANICAL RELEASE FUNCTION

When used with a mortise key cylinder (not included), the manual release assembly will retract the bolt.

FIELD ADJUSTABLE AUTO-RELOCK SWITCH

The automatic relock switch keeps the bolt retracted while the door is open. The door depresses the ball switch assembly on closure, causing the bolt to project automatically, locking the door. In addition, the ball switch assembly is bidirectional, permitting the locks to be used on swinging and sliding doors.

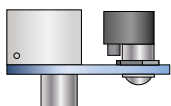


Fig. 1

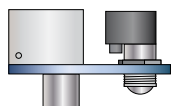
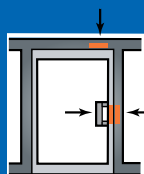


Fig. 2

The auto relock assembly is field adjustable to compensate for wide door gap. (See Figure 1 & 2 above)



INSTALLATION

SDC Spacesaver® locks may be mounted in the frame header, side jamb or door lock stile.

The stainless steel bolt projects at right angles to the lock mechanism, allowing installation of Spacesaver® locks, by means of a simple cutout, in virtually any standard 1.75" frame, or in most door lock stiles. With the entire lock concealed, aesthetic acceptability is complete, security is greater and installation in old or new construction is fast, easy and economical.



MODELS

1091ADMR	Fail-safe 12/24VDC
1291ADMR	Fail-secure 12/24VDC



LOCK FUNCTION

1091ADMR FAILSAFE

The **1091ADMR** is locked when energized. Recommended for safety applications, it is intended that the door unlock automatically when power is interrupted by the access control, power failure or signal from a fire life safety system.

- Bolt Throw 0.75"

1291ADMR FAILSECURE

The **1291ADMR** is locked when de-energized and unlocked when energized. Recommended for security applications only, it is intended that the door remains locked when power is interrupted by a power failure.

- Bolt Throw 0.625"

SPECIFICATIONS

Face Plate	10-1/2"L x 1-1/2"W x 1/8"D (unless noted differently)
Strike	4"L x 1-1/2"W x 1/8"D
Frame Inner Dimension Requirements	8"L x 1-1/2"W x 1-1/2"D See figure 4 below
Bolt Material	Stainless Steel
Bolt Diameter	5/8"
Bolt Throw	1091ADMR: 3/4" 1291ADMR: 5/8"
Mounting Tabs	Two aluminum mounting tabs are provided for easy lock installation. See figure 3B below
Dual Voltage Coil	0.45 Amp @ 24VDC Continuous Duty 0.9 Amp @ 12VDC Continuous Duty
Weight	2.0 lbs

Figure 3A, 3B, 3C, 3D: Typical Frame Header or Side Jamb Installation

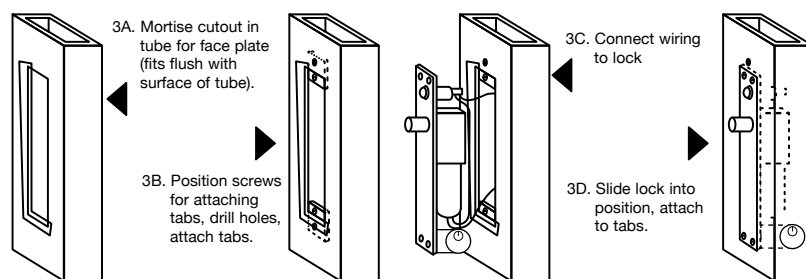
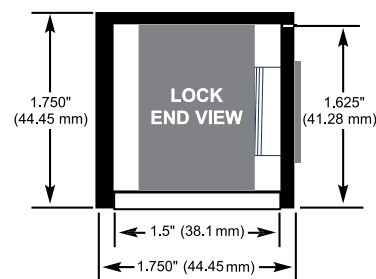


Figure 4



PRODUCT SKU SAMPLE: **1091ADMR V D B CYL-6KDQ**

HOW TO ORDER

1| SPECIFY MODEL

1091ADMR Failsafe 12/24VDC
1291ADMR Failsecure 12/24VDC

2| SPECIFY FINISH

V 628 Clear Anodized Aluminum (Standard)
C 605 Bright Brass
D 606 Dull Brass
F 611 Bright Bronze
G 612 Dull Bronze
H 613 Oil Rubbed Bronze
P 625 Bright Chrome
Q 626 Dull Chrome
U 630 Satin Stainless Steel
Y 335 Black Anodized

3| SPECIFY OPTIONS

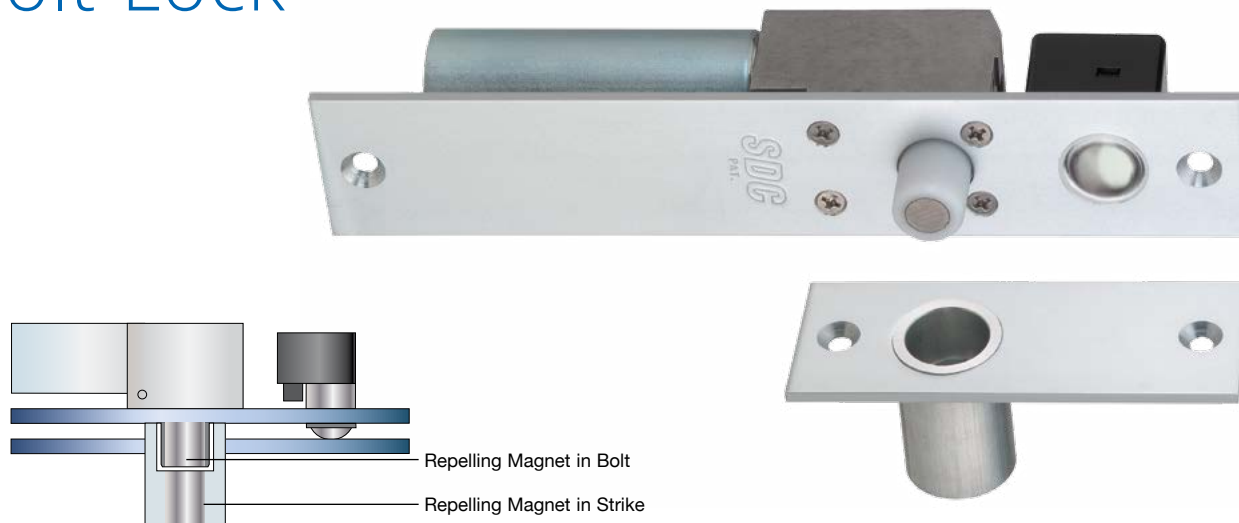
B Magnetic Bolt Status Switch
SPDT 0.25 Amp @ 30VDC
Indicates bolt locked and bolt unlocked.

D Mechanical Door Position Switch
SPDT 5 Amps @ 30VDC
Integral to the auto relock ball switch assembly. Indicates, door closed and door open. Recommended for minimum security applications only

CYL-6KDQ 6 pin, 1-1/8" Keyed different, 626 Dull Chrome

CYL-6KAQ 6 pin, 1-1/8" Keyed alike, 626 Dull Chrome

FS23M Dual Failsafe Spacesaver® Bolt Lock



The **FS23M** dual failsafe feature is available only from SDC. Conventional failsafe locking bolts rely solely on a spring to retract the bolt while the FS23M bolt will unlock with or without the assistance of the spring. This is the only electric bolt lock listed by the California State Fire Marshal for locking of perimeter entrance and emergency exit doors after-hours.

FEATURES

DUAL FAILSAFE

The SDC designed and patented **FS23M** is locked when energized. Recommended for safety applications, the door unlocks automatically when power is interrupted by the access control, power failure or a signal from the fire life safety system.

Large repelling magnets are located within the bolt and strike. When power is interrupted the bolt is retracted and held back by a spring. Should the spring fail, repelling magnets eject the bolt from the strike, unlocking the door.

While designed for perimeter applications the performance characteristics of the **FS23M** make it the first choice for all interior or exterior openings where the use of an electric bolt lock is applicable.

SPECIFICATION GRADE SOLENOIDS

All Spacesaver® lock solenoids are manufactured by SDC to precision specifications. SDC solenoids are capable for superior overall performance in both force and longevity, providing years of service compared to other manufacturers off-the-shelf or commercial grade designs.

BOLT DESIGN

The bolt is made of a lightweight and extremely resilient nylon material. While lack of weight enables the magnet to eject the bolt, an inherent feature is powerful and smooth operation. The longevity of this lock is unsurpassed compared to electromechanical locks with steel bolts with abrasive metal to metal interaction.

Additional bolt features include:

- 2500lbs Bolt Strength
- Hardened Magnet Core, Resistant to Metal Cutting Saws



MODELS



FS23MI

FS23MWDI

Dual Failsafe 12/24VDC
Dual Failsafe 12/24VDC,
specifically for wood frames



3774-0324-001



Figure 3A, 3B, 3C, 3D: Typical Frame Header or Side Jamb Installation

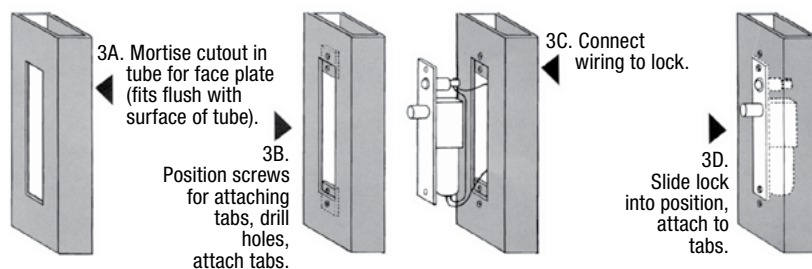
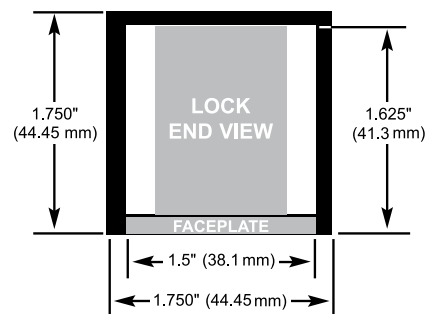


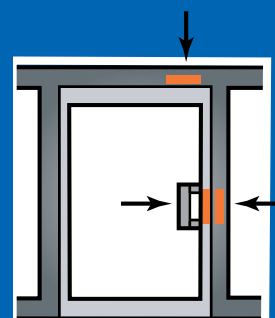
Figure 4: End View



SPECIFICATIONS

Face Plate	8\"L x 1-1/2\"W x 1/8\"D - standard 8-1/2\"L x 1-1/2\"W x 1/8\"D - wood
Strike	4\"L x 1.5\"W x 1-9/16\"D
Frame Inner	8\"L x 1-1/2\"W x 1-5/8\"D
Dimension Requirements	See figure 4
Bolt Material	Nylon with Center Magnet
Bolt Diameter	5/8"
Bolt Throw	5/8"
Mounting Tabs	Two Aluminum Mounting Tabs Are Provided for Easy Lock Installation See figure 3B
Dual Voltage Coil	0.45 Amp @ 24VDC Continuous Duty, 0.9 Amp @ 12VDC Continuous Duty
Weight	1.5 lbs

INSTALLATION



SDC Spacesaver® locks may be mounted in the frame header, side jamb or door lock stile.

PRODUCT SKU SAMPLE: **FS23MI C D B**

HOW TO ORDER

1| SPECIFY MODEL

FS23MI	Dual Failsafe 12/24VDC
FS23MWDI	Dual Failsafe 12/24VDC, specifically for wood frames

2| SPECIFY FINISH

V 628 Clear Anodized Aluminum (Standard)

SPECIAL FINISHES:

- C** 605 Bright Brass
- D** 606 Dull Brass
- F** 611 Bright Bronze
- G** 612 Dull Bronze
- H** 613 Oil Rubbed Bronze
- P** 625 Bright Chrome
- Q** 626 Dull Chrome
- U** 629 Satin Stainless Steel
- Y** 335 Black Anodized

3| SPECIFY OPTIONS

- B** Magnetic Bolt Status Switch
SPDT 0.25 Amp @ 30VDC
Indicates bolt locked and bolt unlocked.
- D** Mechanical Door Position Switch
SPDT 5 Amps @ 30VDC
Integral to the auto relock ball switch assembly.
Indicates, door closed and door open. Recommended for minimum security applications only

1190 / 2090 Spacesaver® Bolt Locks



The **Spacesaver®**, first designed and patented by SDC, is a fundamental innovation in electric locking technology for access control applications. The stainless steel bolt projects at right angles to the lock mechanism, allowing installation of Spacesaver® locks, by means of a simple cutout, in virtually any standard 1.75" frame, or in most door lock stiles. With the entire lock concealed, esthetic acceptability is complete, security is greater and installation in old or new construction is fast, easy and economical.



FEATURES

POWERFUL EXTRA HEAVY DUTY DESIGN

The **1190** and **2090** Spacesaver® bolt locks are the most powerful commercial grade units available on the market. They are designed to provide years of trouble free operation. There are only three moving parts within the hefty solid metal body of the **1190A** and five in the **2090A**.

POWERFUL EXTRA HEAVY DUTY SOLENOID

The solenoids are the strongest found in the industry for commercial or industrial grade applications. The power and strength of the solenoids far surpasses any competitive models. All Spacesaver® lock solenoids are manufactured by SDC to precision specifications. SDC solenoids are capable of superior overall performance in both force and longevity, providing years of service.

CODE COMPLIANCE

Classified in accordance with Uniform Building Code standard 7-2, "Fire Test for Door Assemblies"

SOLID STAINLESS STEEL BOLT

Greater security is provided by the 0.75" (19 mm) diameter solid stainless steel bolt. The bolt rotates freely, making attempts to tamper or cut extremely difficult.

FIELD ADJUSTABLE AUTO-RELOCK SWITCH

The automatic relock switch keeps the bolt retracted while the door is open. The door depresses the ball switch assembly on closure, causing the bolt to project automatically, locking the door. In addition, the ball switch assembly is bidirectional, permitting the locks to be used on swinging and sliding doors.

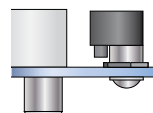


Fig. 1

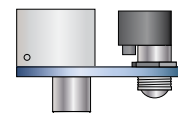


Fig. 2

The auto relock assembly is field adjustable to compensate for wide door gap. See Figure 1 & 2



MODELS



1190AU
1190AWD

Fail-safe, 24VDC only
Fail-safe, 24VDC only, specifically for wood frames

2090AU
2090AWD

Fail-secure, 24VDC only
Fail-secure, 24VDC only, specifically for wood frames





LOCK FUNCTION

1190A FAILSAFE

The **1190A** is locked when energized. Recommended for safety applications, it is intended that the door unlock automatically when power is interrupted by the access control, power failure or signal from a fire life safety system.

- Bolt Throw 0.75"

2090A FAILSECURE

The **2090A** is locked when de-energized and unlocked when energized. Recommended for security applications only, it is intended that the door automatically locks when power is interrupted by the access control or power failure.

- Bolt Throw 0.75"
- Auxiliary Locks
- Complies with "Positive Pressure" Requirements of Standard UL10C
- Listed US & Canada
- Bolt Throw 0.75"

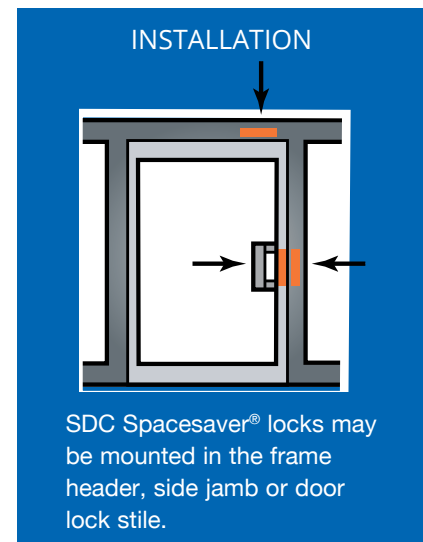


Figure 3A, 3B, 3C, 3D: Typical Frame Header or Side Jamb Installation

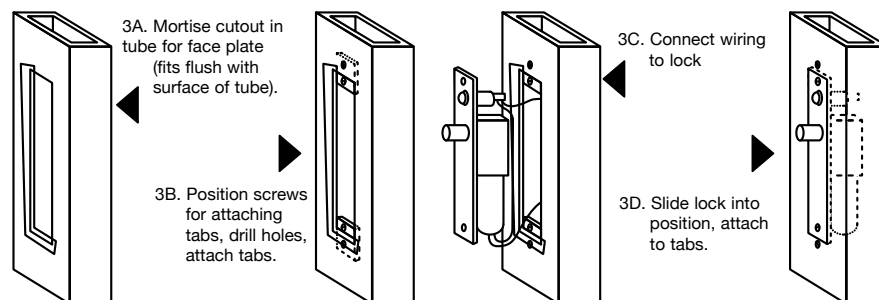
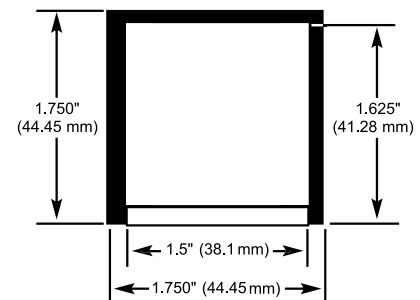


Figure 4



SPECIFICATIONS

Face Plate	8"H x 1-1/2"W x 1/8"D - standard 11"H x 1-3/4"W x 1/8"D - wood
Strike	4"H x 1-1/2"W x 1/8"D
Frame Inner Dimension Requirements	1190A: 8"H x 1-1/2"W x 1-1/2"D (See figure 4) 2090A: 10"H x 1-1/2"W x 1-1/2"D
Bolt Material	Solid Stainless Steel
Bolt Diameter	3/4"
Bolt Throw	3/4"
Mounting Tabs	Two aluminum mounting tabs are provided for easy lock installation. See figure 3B 1190A: 0.7 Amp @ 24VDC 2090A: Inrush 2.5 Amp, Continuous 0.5 Amp @ 24VDC
Weight	1.45 lbs

PRODUCT SKU SAMPLE: **1190AU D**



HOW TO ORDER

1| SPECIFY MODEL

1190AU	Fail-safe, 24VDC only
1190AWD	Fail-safe, 24VDC only, specifically for wood frames
2090AU	Fail-secure, 24VDC only
2090AWD	Fail-secure, 24VDC only, specifically for wood frames

2| SPECIFY OPTION

B	Bolt Position Sensor, SPDT
D	Door Position Sensor, SPDT

1490 / 2490 Spacesaver® Bolt Locks



The **Spacesaver® Extra Narrow** is fully concealed and easily installed in 1.5" (38.1mm) frame or door stile. First designed and patented by SDC, the **Spacesaver®** is a fundamental innovation in electric locking technology for access control applications.

The stainless steel bolt projects at right angles to the lock mechanism, allowing installation of **Spacesaver®** locks, by means of a simple cutout, in virtually any standard 1.5" frame, or in most door lock stiles. With the entire lock concealed, esthetic acceptability is complete, security is greater and installation in old or new construction is fast, easy and economical.

FEATURES

SOLID STAINLESS STEEL BOLT

Greater security is provided by the .625" diameter stainless steel bolt. The bolt rotates freely, making attempts to tamper or cut extremely difficult.

SPECIFICATION GRADE SOLENOIDS

All **Spacesaver®** lock solenoids are manufactured by SDC to precision specifications. SDC solenoids are capable of superior overall performance in both force and longevity, providing years of service.

FIELD ADJUSTABLE AUTO-RELOCK SWITCH

The automatic relock switch keeps the bolt retracted while the door is open. The door depresses the ball switch assembly on closure, causing the bolt to project automatically locking the door. In addition, the ball switch assembly is bi-directional, permitting the locks to be used on swinging and sliding doors.

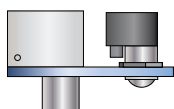


Fig. 1

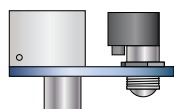


Fig. 2

The auto relock assembly is field adjustable to compensate for wide door gap. See Figure 1 & 2

MODELS



1490AI
2490AH

Fail-safe, 24VDC only
Fail-secure, 24VDC only



LOCK FUNCTION

1490A FAILSAFE

The **1490A** is locked when energized. Recommended for safety applications, it is intended that the door unlock automatically when power is interrupted by the access control, power failure or signal from a fire life safety system.

- Bolt Throw 1/2" (12.7mm)

2490A FAILSECURE

The **2490A** is locked when de-energized and unlocked when energized. Recommended for security applications only, it is intended that the door automatically locks when power is interrupted by the access control or power failure.

- Bolt Throw 1/2" (12.7 mm)



Figure 3A, 3B, 3C, 3D: Typical Frame Header or Side Jamb Installation

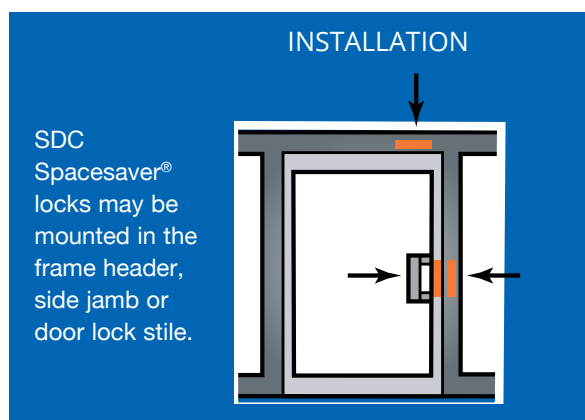
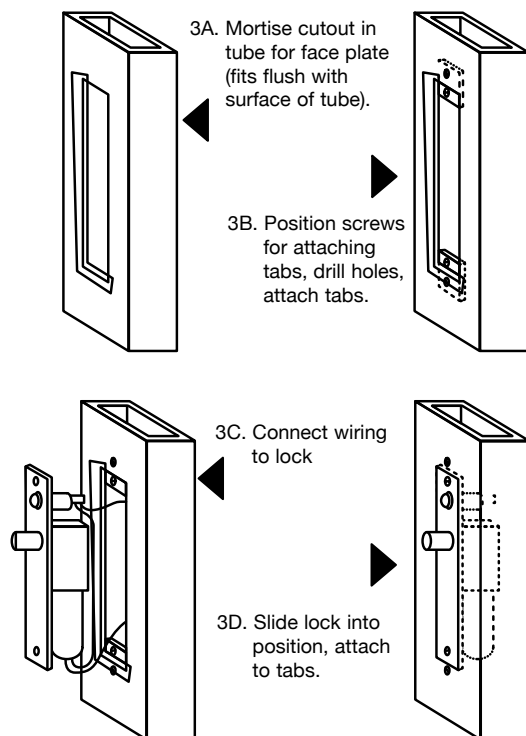
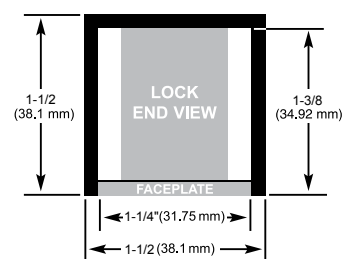


Figure 4



PRODUCT SKU SAMPLE: **1490AI C D B**



HOW TO ORDER

1| SPECIFY MODEL

1490AI Failsafe, 24VDC
2490AH Failsecure, 24VDC

2| SPECIFY FINISH

V 628 Clear Anodized Aluminum (Standard)

SPECIAL FINISHES:

C 605 Bright Brass
D 606 Dull Brass
F 611 Bright Bronze
G 612 Dull Bronze
H 613 Oil Rubbed Bronze
P 625 Bright Chrome
Q 626 Dull Chrome
U 630 Satin Stainless Steel
Y 335 Black Anodized

3| SPECIFY OPTIONS

B Bolt Position Sensor, SPDT
D Door Position Sensor, SPDT



SPECIFICATIONS

Face Plate	8"L x 1-1/4"W x 1/8"D
Strike	4"L x 1-1/2"W x 1/8"D
Frame Inner Dimension Requirements	8"L x 1-1/4"W x 1-3/8"D See figure4
Bolt Material	Stainless Steel
Bolt Diameter	5/8"
Bolt Throw	1/2"
Mounting Tabs	Two aluminum mounting tabs are provided for easy lock installation. See figure 3B
	1490 Failsafe 0.45 Amp @ 24VDC Continuous Duty 0.9 Amp @ 12VDC Continuous Duty
	2490 Failsecure 0.45 Amp @ 24VDC Continuous Duty 0.9 Amp @ 12VDC Continuous Duty
Weight	1.4 lbs

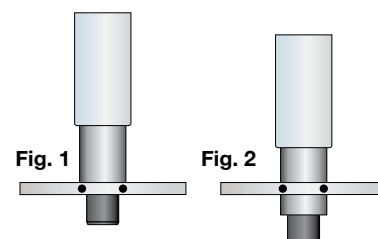
100 / 200 Conventional Mortise Bolt Lock



110/210 Series

The failsafe 110 and failsecure 210 are the most basic bolt locks available. The bolt assembly is adjustable forward up to 1" past the face plate to accommodate wide door gaps or special applications (See figures 1 & 2).

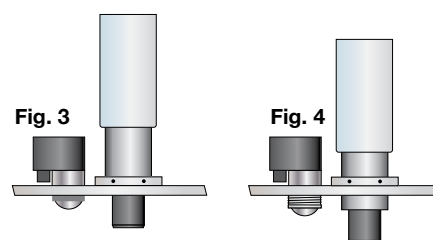
Not for use in wood frames.



160/260 Series

The failsafe 160 and failsecure 260 bolt locks are equipped with an auto relock switch that keeps the bolt retracted when the door is open and causes the door to lock when closed. The auto relock switch and the bolt assembly are both adjustable for wide door gaps. (See Fig. 3 & 4).

Not for use in wood frames.



MODELS



110IV

Failsafe

2-3/4" H x 1-1/4" W faceplate less auto relock switch



210HV

Failsecure

2-3/4" H x 1-1/4" W faceplate less auto relock switch



160IV

Failsafe

4-7/8" H x 1-1/4" W faceplate with auto relock switch

260HV

Failsecure

4-7/8" H x 1-1/4" W faceplate with auto relock switch

OPTION

MC-4

Door Contact Switch (mounted separate from lock)



SPECIFICATIONS

Electrical Specifications

Voltage Dual 900/450 mA @ 12/24 VDC

Mechanical Specifications

Finish 628 Anodized Aluminum

Faceplate **110IV, 210HV:** 2-3/4" H x 1-1/4" W x 0.25" D
160IV, 260HV: 4-7/8" H x 1-1/4" W x 0.25" D

Strike Mortise strike standard. **Not for wood frames.**

Bolt 1/2" dia. x 1/2" throw

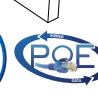
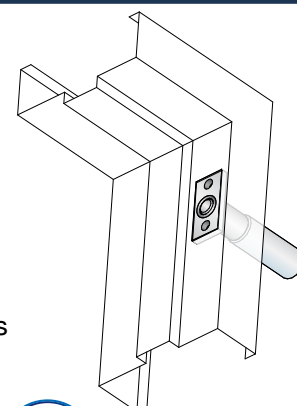
Depth 5"

Weight 1.7 lbs



APPLICATION

- Pharmacy Cabinets
- Gun Cabinets
- Utility Cabinets
- Display Cabinets
- OEM Applications
- Swing and Sliding Doors



180 / 280 Series Surface Mount Bolt Locks

UNIVERSAL MOUNTING CAPABILITY PROVIDES CONTROLLED ACCESS OF DOORS, CLOSETS AND CABINETS.

The SDC universal surface mount electric bolt locks are available in failsafe and failsecure, non-handed. The addition of a card reader, digital keypad or remote control provides access control and convenience of use for a variety of applications.



APPLICATION

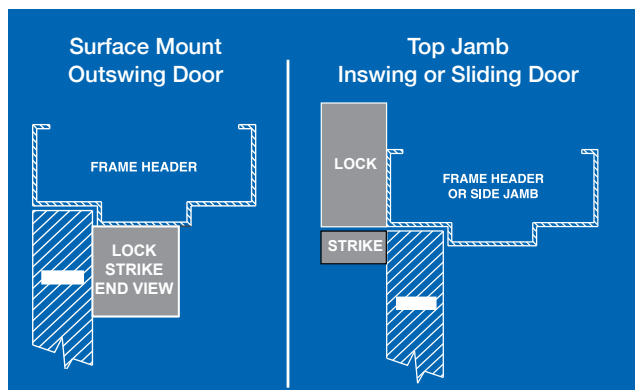
The SDC 180 and 280 series locks provide the ability to electronically secure several door configurations.

- Swinging or sliding doors
- Outswing or inswing doors
- Closet doors
- Pharmaceutical cabinets
- Gun cabinets
- Utility cabinets
- Museum display cases
- Retail display cases

SPECIFICATIONS

Bolt	Solid Stainless Steel, 1/2" dia. x 1/2" throw
Dual Voltage Coil	0.9 Amp @ 12VDC Continuous 0.45 Amp @ 24VDC Continuous
Lock Dimensions	6"L x 2"W x 2"H
Auto Relock	standard
Power Regulator	standard
Weight	2.5 lbs

INSTALLATION



PRODUCT SKU SAMPLE: **180AI V MC-4**



HOW TO ORDER

1| SPECIFY MODEL

- 180AI** Surface mount, failsafe, auto relock, power regulator standard
- 280AI** Surface mount, or top jamb mount, failsecure, auto relock, power regulator standard

2| SPECIFY FINISH

- V** 628 Aluminum (standard)
- Y** 335 Black

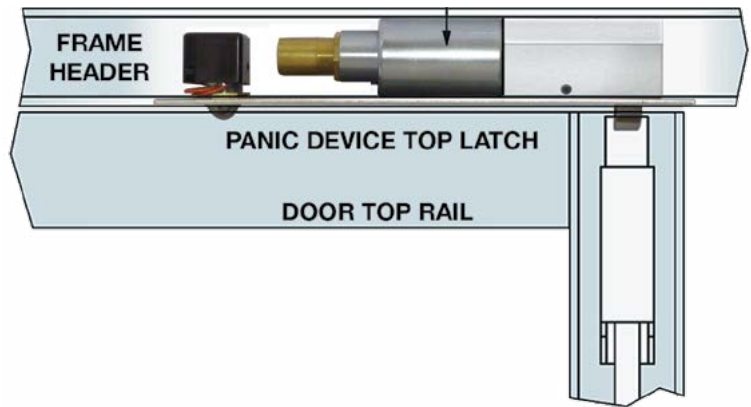
3| SPECIFY OPTIONS

- D** Door Contact Switch MP-4 (mounted separate from lock)



PD2090A PanicLok™

Panic Device Bolt Lock



Top Latch Release for Dor-O-Matic and Kawneer Vertical Rod Exit Devices. The **PBD2090A PanicLok™** permits access control and remote timer control of narrow stile glass doors equipped with Dor-O-Matic or Kawneer concealed vertical rod exit devices.

While the PanicLok™ is used to control entry from the outside only, the exit device is always operable from the inside for uninhibited egress.



FEATURES

FAILSECURE

When the PanicLok™ is energized the door is unlocked for free access and egress. When the PanicLok™ is de-energized, the door is locked on the exterior only. A power supply with battery backup capability is required for electrical unlocking during a power failure.

POWERFUL EXTRA HEAVY DUTY DESIGN

The PanicLok™ is designed with just a few moving parts. The solenoid is manufactured by SDC to precision specifications and provides superior performance for years of service.

AUTO RELOCK SWITCH

A ball type auto relock ball switch assembly is standard to keep the lock bolt retracted when the door is open. When depressed on door closure the ball switch causes the bolt to project, locking the door automatically. The auto relock assembly is also adjustable to compensate for wide door gaps.



SPECIFICATIONS

Face Plate	10"H x 1-1/2"W x 1/8"D
Frame I.D. Requirements	1.5"H x 1.5"W
Bolt	Beveled Stainless Steel
Voltage	24VDC Only (Suffix C)
Current	2.5 Amp Inrush, 400 mA Continuous
Weight	2.0 lbs



MODELS

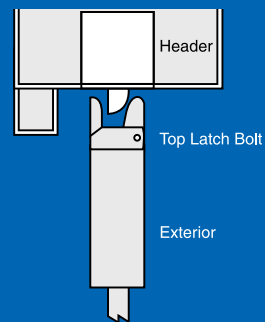


PD2090ALCU LH/RHR Failsecure



PD2090ARCU RH/LHR Failsecure

INSTALLATION



The PanicLok™ is adaptable to single or pairs of center hung doors and offset doors with a minimum of 0.125" reveal.



GL160/GL260 GateLok™

Outdoor Lock for Swinging or Sliding Gates

The SDC GL160 and 260 Series GateLok™ are designed to provide access control and remote locking and unlocking capability for manual or automatic chain link, tubular steel and wrought iron sliding or swinging Tubular Steel and Wrought Iron Gates. Higher Security than Electromagnetic Locks.

FEATURES

- Higher Security Than Electromagnetic Locks
- Solid Stainless Steel 0.625" Diameter Locking Bolt
- Continuous Duty Operation
- Low Current Draw
- Auto Relock Switch
- Heavy Gauge 0.125"
- Weather Sealed Steel Housing
- Access Control Compatible
- Designed for 3" Fence Post and 2" Gate Post and are Adaptable for Smaller Sizes

LOCK OPERATION

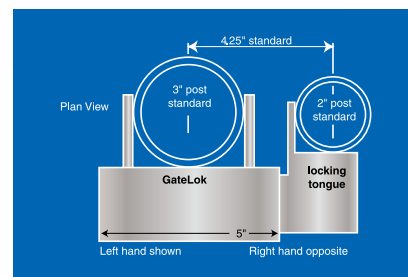
The GL160A/GL260A* GateLoks™ may be unlocked by an access control and remote control.

The GL163A/GL263A* GateLok™ may be unlocked by an access control, remote control and built-in keyswitch.

The GL260MRA GateLok™ may be unlocked by an access control, remote control and built-in mechanical key. The mechanical key is for momentary override and does not maintain a sustained unlocked mode. Mechanical key retracts the bolt even without DC power.

Standard with all GateLoks™ the adjustable Auto Relock Switch keeps the bolt retracted until the gate is in the closed position.

*Note: GL260A and GL263A cannot be unlocked without DC power.



SPECIFICATIONS

Size	5"W x 6-1/2"H x 2"D
Material	1/8" Steel
Bolt	5/8" Dia. x 5/8" Throw
Key Cylinder	ANSI 1-1/8" or 1-1/4" Standard or Interchangeable Core Mortise Key Cylinder. Provided by Others.
Failsafe	12/24 VDC 900/450mA
Failsecure	12/24 VDC 900/450mA
Finish	Black
Weight	9.0 lbs

HOW TO ORDER

1| SPECIFY MODEL

GL160AI	Fail-safe, 12/24VDC
GL163AI	Fail-safe, Built-In Keyswitch 12/24VDC
GL260AH	Fail-secure 12/24VDC
GL263AH	Fail-secure, Built-In Keyswitch, 12/24VDC
GL260MRAH	Fail-secure, Mechanical Key Release, 12/24VDC

Mortise Key Cylinder Provided by Others.

2| SPECIFY OPTIONS

D	Gate Position Sensor SPDT, 10Amp @ 30VDC
B	Bolt Lock Position Sensor, 10Amp @ 30VDC
CYL-KDQ	6 pin, 1.125" mortise cylinder, keyed different, dull chrome

PRODUCT SKU SAMPLE: **GL160AI D B**



290 Micro Cabinet Lock



The 290 Micro Cabinet Lock is designed to electronically secure cabinets and drawers. The need for keys is eliminated and the addition of a keypad or remote control of your choice provides true access control and convenience of use.

FEATURES

- For Swinging or Sliding Doors
- Failsecure Continuous Duty
- Field Reversible Solenoid for Failsafe Operation
- Dual 12/24VDC
- Nonhanded
- 600lbs of Holding Force

APPLICATION

- Pharmaceutical Cabinets and Drawers
- Retail Display Cases and Drawers
- Gun Cabinets
- File Cabinets
- Utility Cabinets and Drawers
- Museum Display Cases

SPECIFICATIONS

Dual Voltage	250/130mA @ 12/24VDC
Dimensions	3-1/4"L x 1-1/8"W x 1-1/8"D"
Weight	0.4 lbs

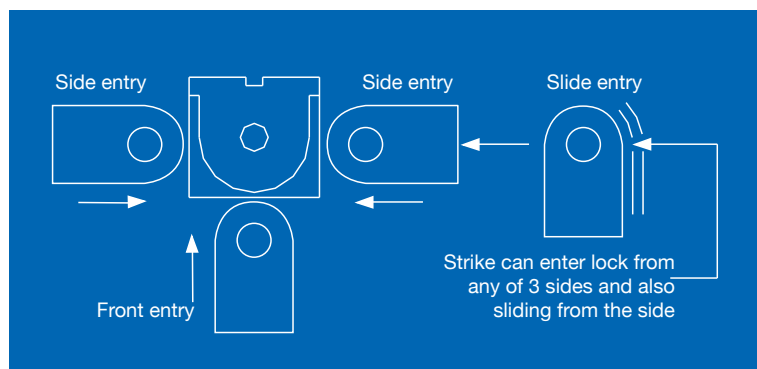
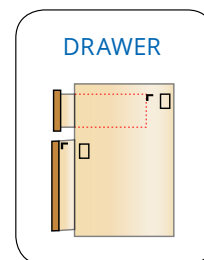
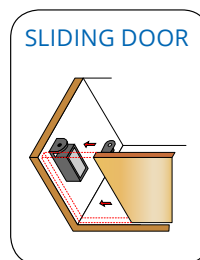
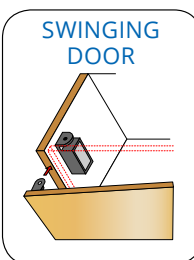
MODELS


290

Micro Cabinet Lock


290LS

Micro Cabinet Lock with Lock Status Switch



295 Programmable Cabinet Lock

The **SDC 295 Battery Powered Keyless Cabinet Lock** provides an easy, economical solution for security and keyless access control for a wide variety of cabinet doors, drawers, storage lockers and more. Quickly and easily add/delete up to 30 individual user PIN codes with programmable keypad. Powered by 2 x AAA batteries, the need for low voltage wiring is eliminated.



FEATURES

- For New Installations or Retrofit of Existing Manual Cam Lock Prep
- Vertical or Horizontal Keypad Mounting
- Multiple Locking Cam Positions, Left/Right, Bottom
- Programmable Multiple User Mode or 1-Time Use Mode
- 1 Master Code: Full Programming and Control Capabilities.
- 1 Sub-Master: Limited Programming for User Codes, Maintained Unlock, Unlock Time Only
- 30 User, 4-6 Digit PIN Codes, Must be Same Length as Master Code. Field Optional User Changeable PIN
- Unlock Time Programmable From 1 to 9 sec. Factory Default 3 Sec.
- Red/Blue Bi-Color LED
- Keypad Tamper Lockout: Inoperable for 10 Seconds After 3 Incorrect Code Entries
- 2 x AAA Batteries (Included), Up to 15,000 Operations
- Concealed Manual Key Cylinder (Replaceable), 2 Keys
- Battery Failure Override, Apply 9V Battery to External Contacts, Enter Master Code



MODELS



295 Programmable Cabinet Lock



SPECIFICATIONS

Supplied Locking Cams	(A) 1-1/2" From Spindle Centerline (B) 1" From Spindle Centerline
Door Thickness	Up to 3/4"
Cam Mounting	5/16" Square Spindle
Hole Required for Spindle	15/16" Diameter
Battery Powered	2x AAA Batteries
Dimensions	4.75"H x 1.4"W x 0.8"D - 1.4"D w/Dial
Weight	0.4 lbs

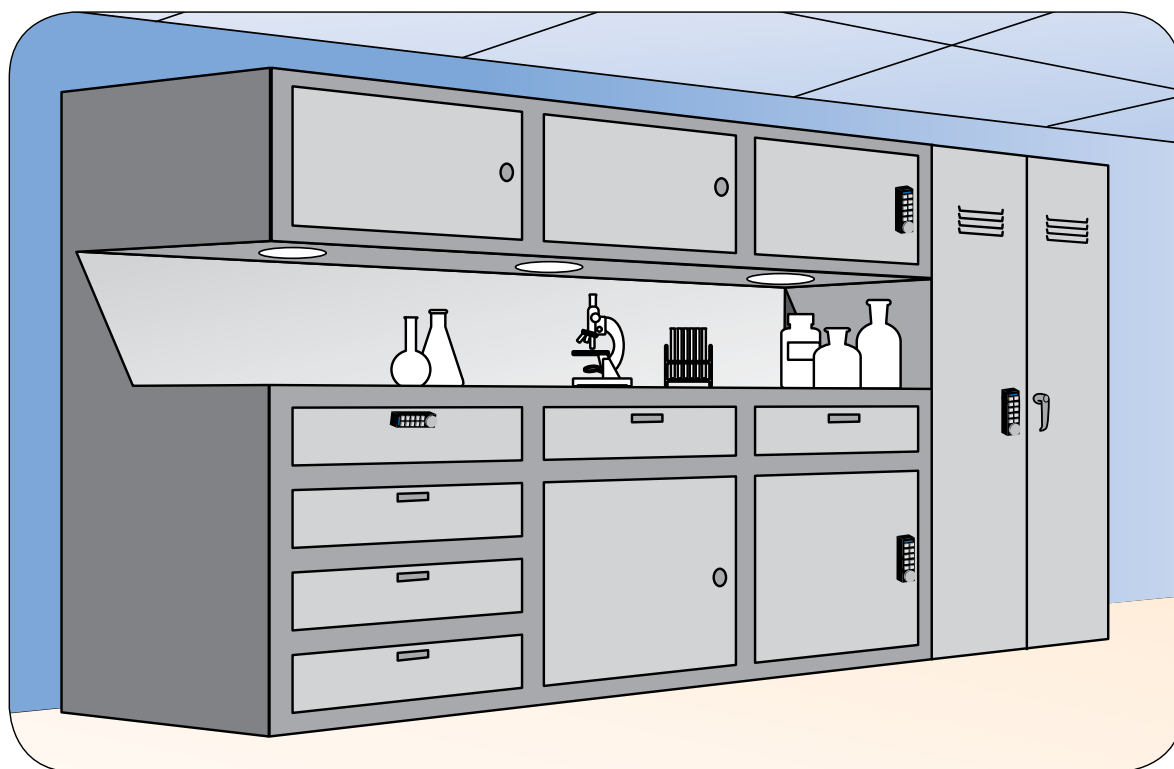


APPLICATION

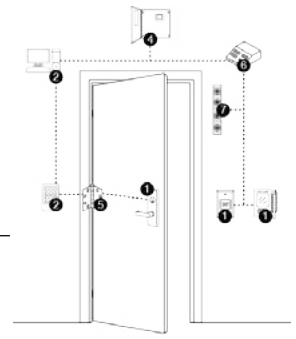
- Retail and Museum: Display Cases, Cabinets
- Laboratory, Healthcare, Pharmaceutical: Files, Cabinets, Lockers and Carts
- Businesses and Schools: Office, kitchen and Bathroom Cabinets, File Cabinets, Desk Drawers, Lockers and Carts
- Industrial/Manufacturing: Metal and Wood Cabinetry for Tools, Supplies, Inventory, Hazardous Material Storage
- Residential: Cabinetry, Closets, Desks and Files
- Law Enforcement: Firearm, Evidence Lockers, Cabinets, Desk Drawers
- Rack / Cabinets: Servers, LAN, HVAC, Communications
- Electrical/Equipment Enclosures: Hinged Electrical Cabinets, NEMA, Floor and Wall Mount
- Security Equipment: Key Control Cabinets, Alarm and Power Supply Cabinets
- Console Cabinets: Security/CCTV, Guard Console Station/Cabinet

PROGRAMMING FUNCTIONS OVERVIEW

- Change Master Code/Code Length: Performs all program functions
- Select Operation Mode
- Delete ALL User Codes
- Reset to Factory Settings
- Add/Change/Delete Sub-Master Code: Performs following programs only
- Set Unlock Time
- Add / Change User Code
- Suspend / Restore User Code
- Suspend / Restore ALL User Codes
- Enable/Disable Maintained Unlock Mode



SDC Door Check List



JOB NAME: _____

DOOR IDENTIFICATION: (EXTERIOR _____) (INTERIOR _____)

DOOR LOCATION OR NUMBER _____

SINGLE DOOR HANDING: RH ___ LH ___ RHR ___ LHR ___

DOUBLE DOORS HANDING: RH ___ LH ___ RHR ___ LHR ___

TYPE OF DOOR: HOLLOW METAL ___: ALUMINUM & GLASS ___: HERCULITE (TOP & BOTTOM RAILS) ___

HERCULITE (BOTTOM RAIL ONLY) ___: HERCULITE (PIVOT & LOCK PATCH FITTINGS) _____

DOES DOOR HAVE AN "EXIT" SIGN ABOVE IT ___ YES ___ NO

DOOR SIZE: W _____ X H _____ + DOOR THICKNESS _____ + LOCK HEIGHT _____ + LOCK BACKSET _____

HINGE TYPE _____ + **HINGE SIZE** _____ + **HINGE FINISH** _____

EXISTING LOCK TYPE & BRAND _____ + **FINISH** _____

DOOR CLOSER: SURFACE MOUNT: INSIDE ___ OR OUTSIDE ___: CLOSER MANUFACTURE _____

DOOR CLOSER: IN THE HEADER ___: HOLD OPEN FEATURE YES ___ NO ___: DEGREE OF OPENING _____

AUTOMATIC DOOR OPERATOR: MANUFACTURE & MODEL# _____

AUTOMATIC DOOR OPERATOR PUSH PLATE SWITCHES: HARD WIRED _____ OR WIRELESS _____

WHAT KIND OF CEILING _____ (PLASTER, DRYWALL, LIFT OUT, PANELS OR PUZZLE)

HOW HIGH IS THE CEILING _____

WHAT KIND OF HEADER _____ (NONE, WOOD, STEEL, ALUMINUM, GLASS)

WHAT TYPE OF TRAFFIC: LIGHT ___ MEDIUM ___ HEAVY ___

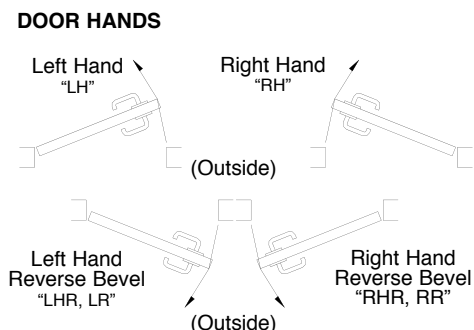
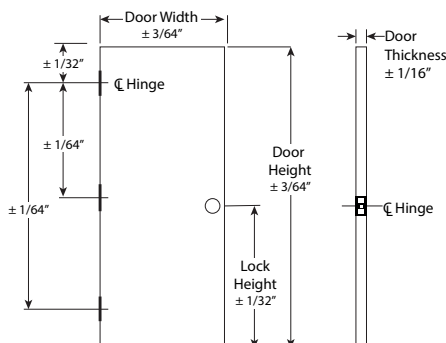
PICTURES TAKEN OF DOOR: YES ___ OR NO ___

MEASUREMENT FROM DOOR TO ACCESS CONTROLLERS: _____

MEASUREMENT FROM DOOR TO POWER SUPPLY: _____

WIRE GAGE _____: **WIRE TYPE** _____: **AMOUNT OF WIRES** _____: **EXTRA WIRES** _____

VOLTAGE AT DOOR: _____: **VOLTAGE AT POWER SUPPLY** _____: **CURRENT AT DOOR** _____



INDEX

Item Code	Page #	Item Code	Page #	Item Code	Page #
110	133	1562SC / 1562SCHDB	26	45-4 / 45-6 / 45-7	69
210	133	1565 / 1566	26	451 / 452 / 453P	187
260	133	1571DE	51	45A	69
280	133	1572 / 1573	10	463 / 474	189
295	143	1575DEU	51	491 / 492	591
918	153	1575U	29	510 thru 590	177
921	159	1576-MP	29	55 A thru F	67
923	157	1576-ZB	29	55-ABC	67
924	159	1576AB / 1576-BK	29	602RF	239
1511	39	1576DEU	51	621P	249
1561	26	1576U	29	631RF / 632RF /	
1562	26	1581 / 1582	10	634RF / 636RF	241
1571	10	1581-DF	10	7000-DB1/4	78
101-1A	283	1581DE	10	7000-DB3/8	78
101-1AK / 101-4AM	283	1581S	47	7000-DGK	78
101-DE / 101-KDE	51	1583V	10	701 thru 713	193
101-PAM	283	1591U	37	702R / 708R	193
1091A	123	180A	135	7250 / 7252 D, H, P, S, T	79
10TD	294	2090A	129	7500EB	90
1190A	129	2490A	131	7550 A thru V	91
1291A	123	25-4U	61	7850 / 7852 A thru X	83
12VR	260	290 / 290LS	141	801AL thru 813AL	193
14-2	294	30-4	63	920/921	155
1490A	131	350V / 352V	19	AB Angle Brackets	15
15-1	273	400U-L2	279	ACM-1	258
15-2 / 15-3	273	400U-RMB / 400U-SN	281	AL4 / AL8	271
15-4	59	412 / 413 / 422 /		APB1000A	297
1511-DF	10	423 / 424 / 425	179	AR11Y	14
1511DE	10	413MN / 423M	181	BBID	195
1511S	39	431 / 432 / 433 /		BL4 / BL8	271
1511T	39	434 / 435	183	BPS6S / BPG6S	213
1512 / 1513	10	441 / 442 / 443 /		BR64	265
1561S / 1561TJ	26	444 / 446	185	CB401-AU / CB401-B	225

INDEX continued

Item Code	Page #	Item Code	Page #	Item Code	Page #
CB701	225	MC-7	296	Z7550	87
CC1-5 / CC3-5	82	MD-31	293	ZA7850	81
CL4 / CL8	271	MS-12 / MS-14 /		ZD7250	80
CR4	257	MS-16 / MS-20	72	ZR7550	87
DBM	68	MSB550	173	ZS7250	80
DC-1	12	PB-16 / PB-8	258	ZT7550	91
DL4 / DL8	271	PD2090A	137	ZT7850	83
DPS-11	295	PSB560	171	ZY7550	87
DTMA / DTMO	269	PT-2U	235		
E1200 / E600 / E6200	21	PT-3V	235		
E300	33	PT-5	233		
E75 / E76 / E77	163	PTH	229		
EA100	277	PTM	231		
EH10 / EH20 / EH30 /		RB12V4 / RB12V7	261		
EH40 / EH42	287	RCC	271		
EKE03	96	S6100 / S6200 / S6300	95		
EMC	259	S6100-101	99		
EP17624 / EP17624TJ	35	S6303FH	105		
EZ-A / EZ-B / EZ-D /		SC-10	106		
EZ-T	11	SK-82 / SK-88	85		
FB-4	257	SK-L90	85		
FP Filler Plates/		TCC	271		
AB Angle Brackets	14	TJ1 / TJ2	12		
FS23M	127	TJ2440	264		
GKE03	96	TJ81 / TJ82	12		
GL160A / GL260A	139	TP1220 / TP2440	264		
HID1326-25	169	TR-12 / TR-24	263		
IP100	119	UB11 / UB12	13		
IPPRO	147	UF11 / UF12	13		
IPRW	151	UF81 / UF82	13		
LR100	113	UR-1 / UR2-4 / UR4-8	253		
MC-4	296	Z7250 / Z7252	75		

Icon Index



Made in the USA



UL Listed



Grade 1



CE Listed



Weather Resistant



Available through
shipQUICK Inventory



Lifetime Warranty



3 Year Warranty



5 Year Warranty



Field Selectable



ADA Compliant



Power over Ethernet
Capable Locking Hardware

NOTES

[illegible]

PUSH UNTIL ALARM
SOUNDS. DOOR CAN BE
OPENED IN 15 SECONDS.

