

Exit Device - Delayed Egress

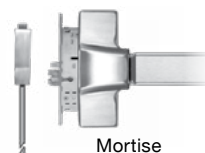
Distributor Discount Code **XK**



Delay electronics packaged on a 3-gang wall plate for recessed wall mounting or surface wall mounting with optional junction box. Features include: 15 second exit delay, 1 or 2 second nuisance delay, code dependent exit delay and nuisance times. Keypad for violation reset, momentary bypass and on-off; Voice Annunciation and digital countdown display with door open indicator. Status and remote control inputs are standard
Single: 24VDC @ 430 mA **Tandem: 24VDC @ 680 mA**



Rim Mount



Mortise



Vertical Rod



EE

GE



101-KDE



101-DE with SHD-J



DEC-J

Specify Trim for S61 and S62 - See page 39

SPECIFY DEVICE

Code	Description	Price
S61	Rim mount exit device	640.00
S62	Surface vertical	960.00
S63	Mortise [03 Lever Trim included] - specify: EE/GE Eclipse Escutcheon/Galaxy Escutcheon	1,174.00

SPECIFY FUNCTION

Code	Description	Price
01	Exit Only	
02	Dummy	
03	Nightlatch	N/C

SPECIFY PANIC OR FIRE RATED

Code	Description	Price
P	Panic	
N/C		
F	Fire	
		118.00

SPECIFY HAND (Mortise Only)

Code	Description	Price
RR	Right hand reverse bevel, RHRB	
LR	Left hand reverse bevel, LHRB	N/C

SPECIFY FINISH

Code	Description	Price
U	630 Dull Stainless Steel	N/C

SPECIFY LENGTH

Code	Description	Price
36	For 36" Door	N/C
42	For 42" Door	22.00
48	For 48" Door	44.00

SPECIFY CONTROLLER

See page for features

DE	Electrification of master exit device and wall mount controller with keypad control and reset	1,333.00
KDE	Electrification of master exit device and wall mount controller with both keypad and key switch control and reset, less cylinder - order cylinder separte:	1,440.00
CYL-6KDQ	6 pin, 1.125" mortise cylinder, keyed different, dull chrome	add 33.00
CYL-6KAQ	6 pin, 1.125" mortise cylinder, keyed alike, dull chrome	add 33.00
DES	For pair of doors, additional exit device equipped with delayed egress mechanism, less controller. Must be ordered together with DE and device.	534.00

SPECIFY OPERATION

If no Code is specified - NA is the SDC STANDARD OPERATIONS MODE for this product

NA	IBC, IFC, NFPA compliant, Field Selectable 15 to 30 second Exit Delay, 1 or 2 Nuisance Delay	N/C
NC	IBC, IFC, NFPA 101, NFPA 1-UFC, UBC, SBC compliant, Fixed 15 second Exit Delay, 0/1 Nuisance Delay, Calif. Building Code OSHPD/Manual Power Up	N/C
ND	IBC, IFC, NFPA 101, NFPA 1-UFC, UBC, SBC compliant, Fixed 15 second Exit Delay, 0/1 Nuisance Delay	N/C
BC	BOCA National Building Code/City of Chicago Compliant, Fixed 15 second Exit Delay, 0 Nuisance Delay, Auto Reset 30 seconds	N/C
BD	BOCA National Building Code, Fixed 15 second Exit Delay, 0/1 Nuisance Delay, Auto Reset 30 seconds	N/C

SPECIFY TRIM (Mortise Only)

Code	Description	Price
EE	Eclipse Escutcheon	
GE	Galaxy Escutcheon	N/C

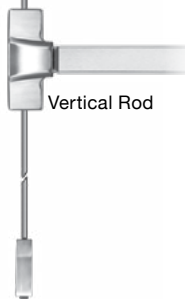
TRIM OPTIONS

CYL-6KDQ	6 pin, 1.125" mortise cylinder, keyed different, dull chrome	33.00
CYL-6KAQ	6 pin, 1.125" mortise cylinder, keyed alike, dull chrome	33.00
RIM-CYL-KA	Rim Cylinder for 03 Function, keyed alike - see page 39 for more info	36.00

SPECIFY OPTIONS FOR CONTROLLER

DEC-J	3 Gang Interior - 101-DEC	97.00	SHD-J	Shroud for outdoor Use DEC-J	97.00
--------------	---------------------------	--------------	--------------	------------------------------	--------------

- LED (field selectable Active or Off) Bypass - No LED
- Armed - Blinks every 4 seconds (Green when armed, Red when in alarm mode)
- Low Battery Alert - Siren will beep every 45 seconds. 15 or 60 second arming delay
- Remote status output
- Field selectable alarm modes include:
 - › Continuous alarm with manual key reset
 - › Alarm automatically rearms 2 minutes after door closes and may be retriggered. May be manually rearmed by key before automatically rearmed.



SPECIFY DEVICE [][][][][][][][][][][][] **LIST**

S61 Rim mount exit device	640.00
S62 Surface vertical	960.00
S63 Mortise [03 Lever Trim included] - specify: EE/GE Eclipse Escutcheon/Galaxy Escutcheon	1,174.00

SPECIFY FUNCTION [][][][][][][][][][][] **Add to List**

01 Exit Only	03 Nightlatch	N/C
---------------------	----------------------	------------

SPECIFY PANIC OR FIRE RATED [][][][][][][][][][][]

P Panic	N/C	F Fire	118.00
----------------	------------	---------------	---------------

SPECIFY HAND (Mortise Only) [][][][][][][][][][][]

RR Right hand reverse bevel, RHRB	LR Left hand reverse bevel, LHRB	N/C
--	---	------------

SPECIFY FINISH [][][][][][][][][][][]

U 630 Dull Stainless Steel	N/C
-----------------------------------	------------

SPECIFY LENGTH [][][][][][][][][][][]

36 For 36" Door N/C	42 For 42" Door 22.00	48 For 48" Door 44.00
-----------------------------------	-------------------------------------	-------------------------------------

SPECIFY EXIT ALARM [][][][][][][][][][][]

A Exit Alarm, 9V Battery Powered	427.00
B Exit Alarm with 12/24V AC/DC input (9V battery provides power backup)	470.00

Options

AD1 1 second arming delay	N/C
----------------------------------	------------

SPECIFY TRIM (Mortise Only) [][][][][][][][][][][]

EE Eclipse Escutcheon	GE Galaxy Escutcheon	N/C
------------------------------	-----------------------------	------------

TRIM OPTIONS (NOTE: use Clover Cam for S63) **Add to List**

CYL-6KDQ 6 pin, 1.125" mortise cylinder, keyed different, dull chrome	33.00
CYL-6KAQ 6 pin, 1.125" mortise cylinder, keyed alike, dull chrome	33.00
RIM-CYL-KA Rim Cylinder for 03 Function, keyed alike - see page 39 for more info	36.00

SPECIFY POWER TRANSFER (For the entire line of Power Transfer, see page 90 and page 91) **LIST**

PTM-2AL Two (2) Conductor Power Transfer Device: Two (2) 18 Ga. wires 5 Amp @ 12/24V AC/DV, Aluminum Powder Coat, US28 equivalent	383.00
--	---------------

PTH-4Q Four (4) Conductor Power Transfer Hinge 1 Amp @ 12/24V per pair, 4.5" x 4.5" standard weight, 626 Dull Chrome	161.00
---	---------------

SPECIFY POWER SUPPLY (For the entire line of Power Supplies, see page 93) **LIST**

602RF 1 Amp, class 2 output, 12" W x 12" H x 3.75" D box	279.00
631RF 1.5 Amp, class 2 output, 12" W x 12" H x 3.75" D box	374.00

SECURITY DOOR CONTROLS
 801 Avenida Acaso • Camarillo, CA 93012
 Email: Service@sdsecurity.com • www.sdsecurity.com



Specify Trim for S61 and S62 - See page 35



600 Series Power Supply 602RF (shown)

RIM DEVICES STANDARD STRIKES

Rim Strikes List



ST1P 22.00
 Standard for S6100P
 Projection: 13/16" (21mm)



ST1F 22.00
 Standard for S6100F
 Projection: 13/16" (21mm)

Optional Mullion Strike List



Optional for mullion application

ST1MP **ST1MF** 74.00
 For 6100P For 6100F
 Projection: 7/8" (22.5mm)

MORTISE STRIKE List

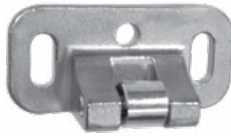


For use on 1-3/4" standard or 2-1/4" thick single door, and 2-1/4" double door with overlapping astragal and coordinator

ST3F **ST3P** 20.00
 Standard for S6300F Standard for S6300P

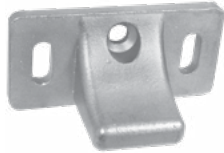
SURFACE / Standard VERTICAL ROD DEVICES Strike

Top Strikes List Bottom (Floor) Strikes List



ST2P 20.00
 Standard top strike for S6200P

Projection: 29/32" (23mm)

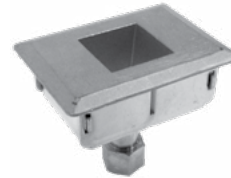


ST2F 20.00
 Standard top strike for S6200F

Projection: 1-1/8" (29mm)



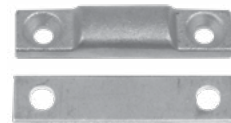
ST28P 22.00
 Standard floor strike for S6200P



ST28F 33.00
 Standard floor strike for S6200F

Mortise: 2-1/4" (57mm)

Optional Threshold Strikes List



ST28T 16.00
 Optional floor strike for using threshold openings

Projection: 3/8" (9.5mm)

OPTIONAL DOUBLE DOOR STRIKE List



ST2DF 52.00
 Optional for pairs of doors with rim mount device.

Projection: 1-15/16" (49mm)

REMOVABLE MULLION List



KR90F 694.00
 Standard Key Removable Mullion Less Key Cylinder
 For Panic Exit and Fire Exit Rim Mount Devices.

Length: 8ft
 Material: 2" 11 Gauge Steel Tube
 Finish: Primer gray

OPTIONAL CYLINDER List

RIM-CYL-KA 36.00

Rim Cylinder, keyed alike - see page 39 for more info

