

Exit Device - Electric Latch Retraction/Dogging

Distributor Discount Code **XK**

Momentary or maintained latch bolt and push pad retraction, with simultaneous dogging. Automatic re-triggering of latch retraction

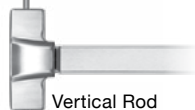
Voltage: 24VDC @ 700 mA activation, 200 mA continuous



Rim Mount



Mortise



Vertical Rod



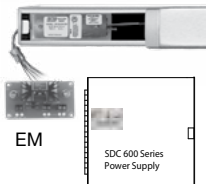
EE



GE



E



EM



SDC 600 Series Power Supply

Specify Trim for S61 and S62 - See page 39

SECURITY DOOR CONTROLS
 801 Avenida Acaso • Camarillo, CA 93012
 Email: Service@sdsecurity.com • www.sdsecurity.com



PTM Series



PTH x 5 Ft Cable



600 Series Power Supply 602RF (shown)

SPECIFY DEVICE LIST

S61	Rim mount exit device	640.00
S62	Surface vertical	960.00
S63	Mortise [03 Lever Trim included] - specify: EE/GE Eclipse Escutcheon/Galaxy Escutcheon	1,174.00

SPECIFY FUNCTION Add to List

01	Exit Only	02	Dummy	03	Nightlatch	N/C
-----------	-----------	-----------	-------	-----------	------------	------------

SPECIFY PANIC OR FIRE RATED Add to List

P	Panic	N/C	F	Fire	118.00
----------	-------	------------	----------	------	---------------

SPECIFY HAND (Mortise Only) Add to List

RR	Right hand reverse bevel, RHRB	LR	Left hand reverse bevel, LHRB	N/C
-----------	--------------------------------	-----------	-------------------------------	------------

SPECIFY FINISH Add to List

U	630 Dull Stainless Steel	N/C
----------	--------------------------	------------

SPECIFY LENGTH Add to List

36	For 36" Door	N/C	42	For 42" Door	22.00	48	For 48" Door	44.00
-----------	--------------	------------	-----------	--------------	--------------	-----------	--------------	--------------

SPECIFY ELECTRIC LATCH RETRACTION Add to List

E	Dual Electric Latch Retraction and Dogging	747.00
EM	External Module Dual Electric Latch Retraction/Dogging	801.00

SPECIFY TRIM (Mortise Only) Add to List

EE	Eclipse Escutcheon	GE	Galaxy Escutcheon	N/C
-----------	--------------------	-----------	-------------------	------------

TRIM OPTIONS (NOTE: use Clover Cam for S63) Add to List

CYL-6KDQ	6 pin, 1.125" mortise cylinder, keyed different, dull chrome	33.00
CYL-6KAQ	6 pin, 1.125" mortise cylinder, keyed alike, dull chrome	33.00
RIM-CYL-KA	Rim Cylinder for 03 Function, keyed alike - see page 39 for more info	36.00

SPECIFY POWER TRANSFER (For the entire line of Power Transfer, see page 90 and page 91) LIST

PTM-2AL	Two (2) Conductor Power Transfer Device: Two (2) 18 Ga. wires 5 Amp @ 12/24V AC/DV, Aluminum Powder Coat, US28 equivalent	383.00
PTM-10AL	Ten (10) Conductor Power Transfer Device: Ten (10) 24 Ga. wire 1 Amp @ 12/24V AC/DC, Aluminum Powder Coat, US28 equivalent	383.00
PTH-4Q	Four (4) Conductor Power Transfer Hinge 1 Amp @ 12/24V per pair, 4.5" x 4.5" standard weight, 626 Dull Chrome	161.00
PTH-10Q	Ten (10) Conductor Power Transfer Hinge 1 Amp @ 12/24V per pair, 4.5" x 4.5" standard weight, 626 Dull Chrome	209.00

SPECIFY POWER SUPPLY (For the entire line of Power Supplies, see page 93) LIST

602RF	1 Amp, class 2 output, 12" W x 12" H x 3.75" D box	279.00
631RF	1.5 Amp, class 2 output, 12" W x 12" H x 3.75" D box	374.00
EMC	Sequencer Module (For other Modules and pairs of doors see page 95)	161.00

Exit Devices

RIM DEVICES STANDARD STRIKES

Rim Strikes List



ST1P 22.00
 Standard for S6100P
 Projection: 13/16" (21mm)



ST1F 22.00
 Standard for S6100F
 Projection: 13/16" (21mm)

Optional Mullion Strike List



Optional for mullion application

ST1MP **ST1MF** 74.00
 For 6100P For 6100F
 Projection: 7/8" (22.5mm)

MORTISE STRIKE List

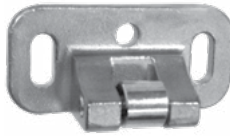


For use on 1-3/4" standard or 2-1/4" thick single door, and 2-1/4" double door with overlapping astragal and coordinator

ST3F **ST3P** 20.00
 Standard for S6300F Standard for S6300P

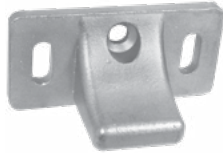
SURFACE / Standard VERTICAL ROD DEVICES Strike

Top Strikes List Bottom (Floor) Strikes List



ST2P 20.00
 Standard top strike for S6200P

Projection: 29/32" (23mm)

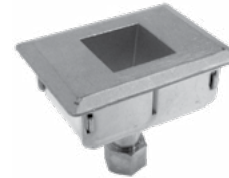


ST2F 20.00
 Standard top strike for S6200F

Projection: 1-1/8" (29mm)



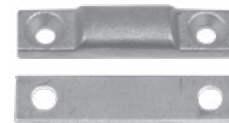
ST28P 22.00
 Standard floor strike for S6200P



ST28F 33.00
 Standard floor strike for S6200F

Mortise: 2-1/4" (57mm)

Optional Threshold Strikes List



ST28T 16.00
 Optional floor strike for using threshold openings

Projection: 3/8" (9.5mm)

OPTIONAL DOUBLE DOOR STRIKE List



ST2DF 52.00
 Optional for pairs of doors with rim mount device.

Projection: 1-15/16" (49mm)

REMOVABLE MULLION List



KR90F 694.00
 Standard Key Removable Mullion Less Key Cylinder
 For Panic Exit and Fire Exit Rim Mount Devices.

Length: 8ft
 Material: 2" 11 Gauge Steel Tube
 Finish: Primer gray

OPTIONAL CYLINDER List

RIM-CYL-KA 36.00

Rim Cylinder, keyed alike - see page 39 for more info

