



Remains latched when unlocked for fire door integrity. Failsafe (F) fire rated device for stairwell doors, power loss or signal from fire command center releases failsafe device immediately. Complies with national building and fire codes

Voltage: 12/24VDC @ 600/300 mA



SPECIFY DEVICE LIST

S63 Mortise [03 Lever Trim included] - specify: **EE/GE** Eclipse Escutcheon/Galaxy Escutcheon **1,174.00**

SPECIFY FUNCTION Add to List

01 Exit Only **03** Nightlatch **N/C**

SPECIFY PANIC OR FIRE RATED

P Panic **N/C** **F** Fire **118.00**

SPECIFY HAND (Mortise Only)

RR Right hand reverse bevel, RHRB **LR** Left hand reverse bevel, LHRB **N/C**

SPECIFY FINISH

U 630 Dull Stainless Steel **N/C**

SPECIFY LENGTH

36 For 36" Door **N/C** **42** For 42" Door **22.00** **48** For 48" Door **44.00**

SPECIFY TRIM

EE Eclipse Escutcheon **GE** Galaxy Escutcheon **N/C**



TRIM OPTIONS Add to List

CYL-6KDQ 6 pin, 1.125" mortise cylinder, keyed different, dull chrome **33.00**
CYL-6KAQ 6 pin, 1.125" mortise cylinder, keyed alike, dull chrome **33.00**

SPECIFY FAILSAFE OR FAILSECURE

MF Failsafe Electric Mortise Exit Device **214.00**
MS Failsecure Electric Mortise Exit Device **214.00**

SPECIFY OPTIONS LIST

D Door Position, MC-4 Door Contact **54.00**
L Latch Position Status Output **86.00**
R Request-To-Exit Output **86.00**



PTM Series



PTH x 5 Ft Cable

SPECIFY POWER TRANSFER (For the entire line of Power Transfer, see page 90 and page 91) LIST

PTM-2AL Two (2) Conductor Power Transfer Device: Two (2) 18 Ga. wires 5 Amp @ 12/24V AC/DV, Aluminum Powder Coat, US28 equivalent **383.00**
PTH-4Q Four (4) Conductor Power Transfer Hinge 1 Amp @ 12/24V per pair, 4.5" x 4.5" standard weight, 626 Dull Chrome **161.00**



600 Series Power Supply 602RF (shown)

SPECIFY POWER SUPPLY (For the entire line of Power Supplies, see page 93) LIST

602RF 1 Amp, class 2 output, 12" W x 12" H x 3.75" D box **279.00**
631RF 1.5 Amp, class 2 output, 12" W x 12" H x 3.75" D box **374.00**

RIM DEVICES STANDARD STRIKES

SURFACE / Standard VERTICAL ROD DEVICES Strike

Rim Strikes List



ST1P 22.00
 Standard for S6100P
 Projection: 13/16" (21mm)



ST1F 22.00
 Standard for S6100F
 Projection: 13/16" (21mm)

Optional Mullion Strike List



Optional for mullion application

ST1MP **ST1MF** 74.00
 For 6100P For 6100F
 Projection: 7/8" (22.5mm)

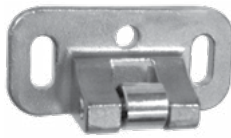
MORTISE STRIKE List



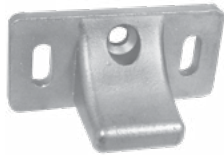
For use on 1-3/4" standard or 2-1/4" thick single door, and 2-1/4" double door with overlapping astragal and coordinator

ST3F **ST3P** 20.00
 Standard for S6300F Standard for S6300P

Top Strikes List



ST2P 20.00
 Standard top strike for S6200P
 Projection: 29/32" (23mm)

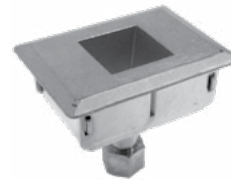


ST2F 20.00
 Standard top strike for S6200F
 Projection: 1-1/8" (29mm)

Bottom (Floor) Strikes List

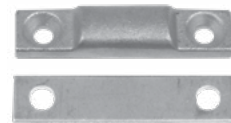


ST28P 22.00
 Standard floor strike for S6200P



ST28F 33.00
 Standard floor strike for S6200F
 Mortise: 2-1/4" (57mm)

Optional Threshold Strikes List



ST28T 16.00
 Optional floor strike for using threshold openings
 Projection: 3/8" (9.5mm)

OPTIONAL DOUBLE DOOR STRIKE List



ST2DF 52.00
 Optional for pairs of doors with rim mount device.
 Projection: 1-15/16" (49mm)

REMOVABLE MULLION List



KR90F 694.00
 Standard Key Removable Mullion Less Key Cylinder
 For Panic Exit and Fire Exit Rim Mount Devices.
 Length: 8ft
 Material: 2" 11 Gauge Steel Tube
 Finish: Primer gray

OPTIONAL CYLINDER List

RIM-CYL-KA 36.00
 Rim Cylinder, keyed alike
 - see page 39 for more info

