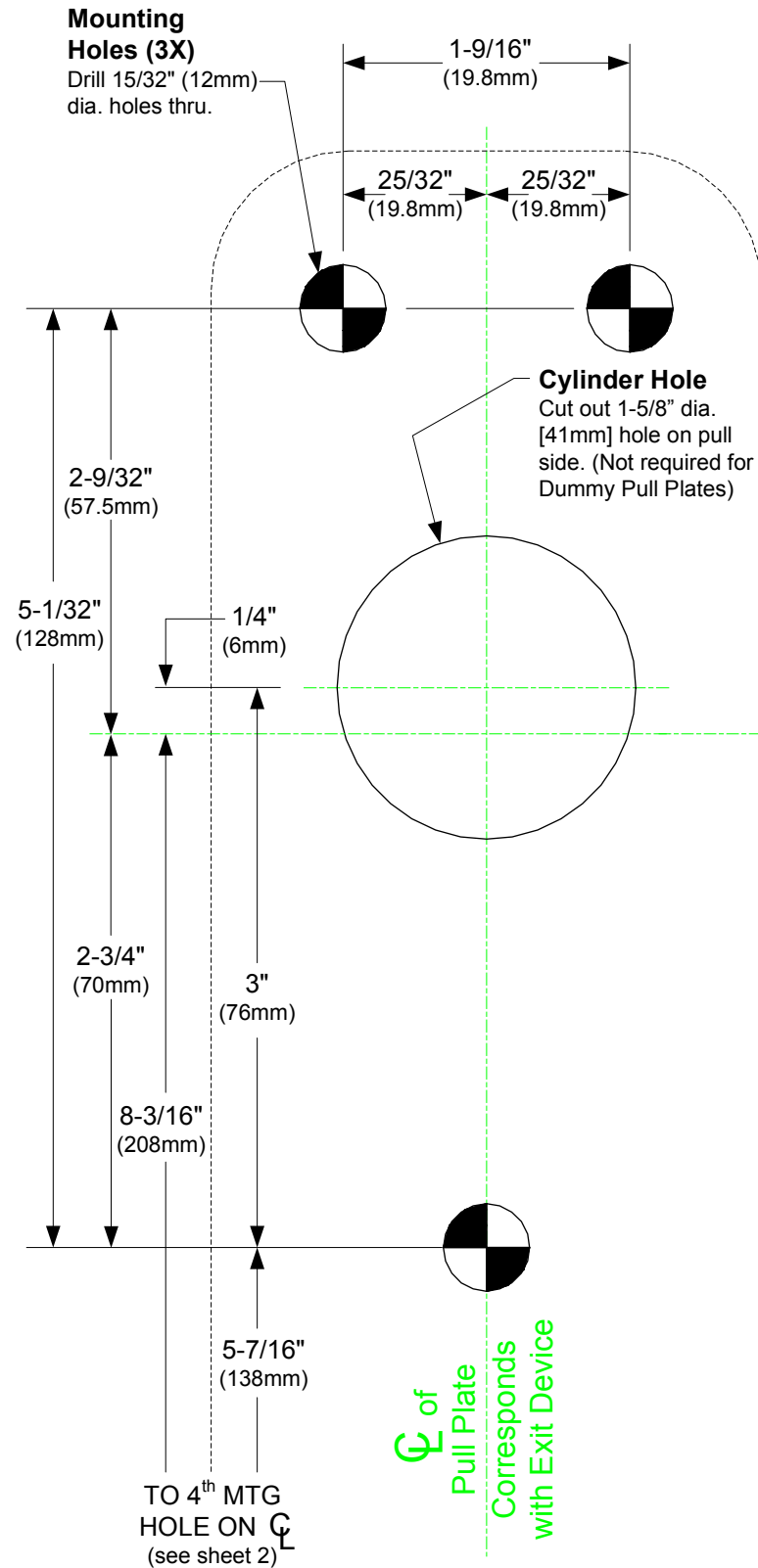


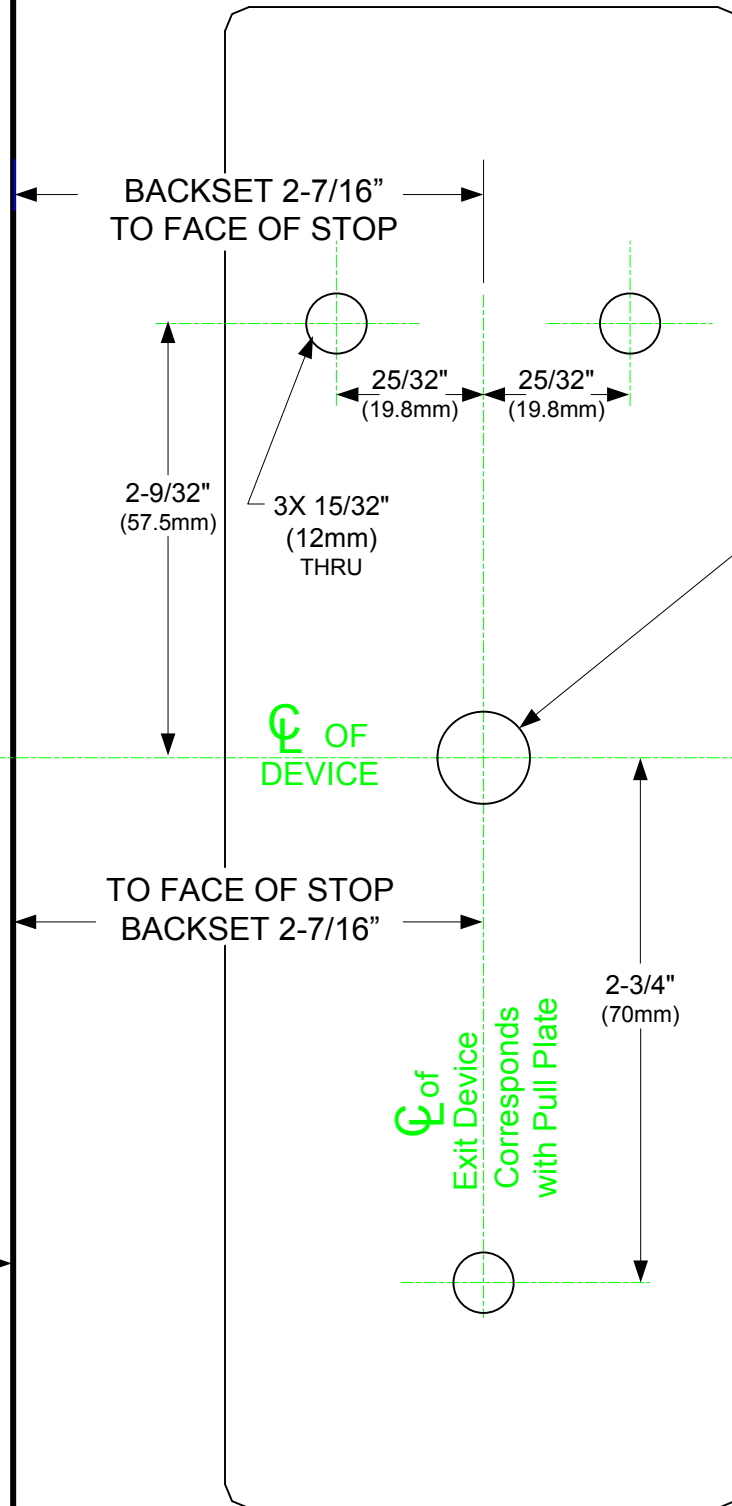
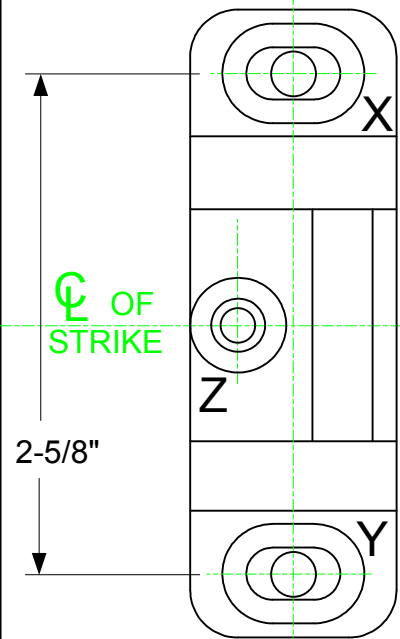
Note;
 This template is used for Rim Mount and Surface Mount Vertical Rod Devices. It is not available for Concealed Vertical Rod Exit Devices.

PULL PLATE



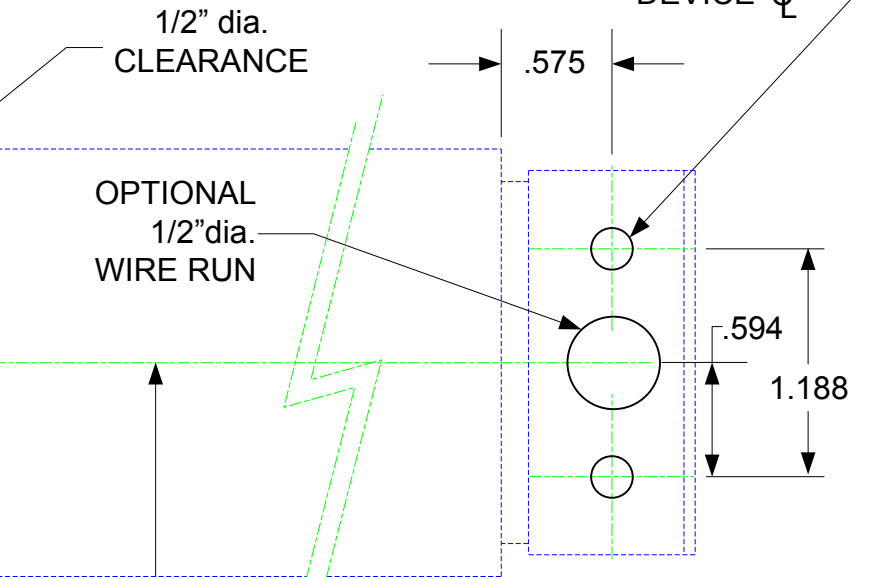
STRIKE MOUNTING HOLES:
 1. Drill .201 dia. (#7 Drill) holes 2X.
 2. Use #1/4-20 Tap

ADJUST THE STRIKE FOR PROPER ALIGNMENT WITH THE LATCH BOLT. LOCK STRIKE IN PLACE BY TIGHTENING THE SCREWS AT THE "X" & "Y" POSITIONS USING A 3/16" dia. DRILL. DRILL THE 3rd HOLE AT THE "Z" POSITION AND TAP WITH A #12-24 TAP. ATTACH 3rd SCREW.



INSIDE MOUNTING HOLES
 For Metal Door Surface Application:
 1. Drill 5/32" (12mm) dia. holes 3X as marked.
 2. For 4th mounting hole, drill 1/4" (6.35mm) dia. thru, then from outside, drill 15/32" (12mm) 1-1/2" (38.1mm) deep (see sht. 2).

AFTER EXIT DEVICE IS CUT AND MOUNTED, INSTALL END CAP BRACKET CENTERED ON DEVICE CL



801 Avenida Acaso, Camarillo, Ca. 93012
 • (805) 494-0622 • Fax: (805) 494-8861
 www.sdcsecurity.com
 E-mail: service@sdsecurity.com

TEMPLATE-S6100-SP
 Devices covered by this template:
 Panic Rim Device and Fire Rim Device.

