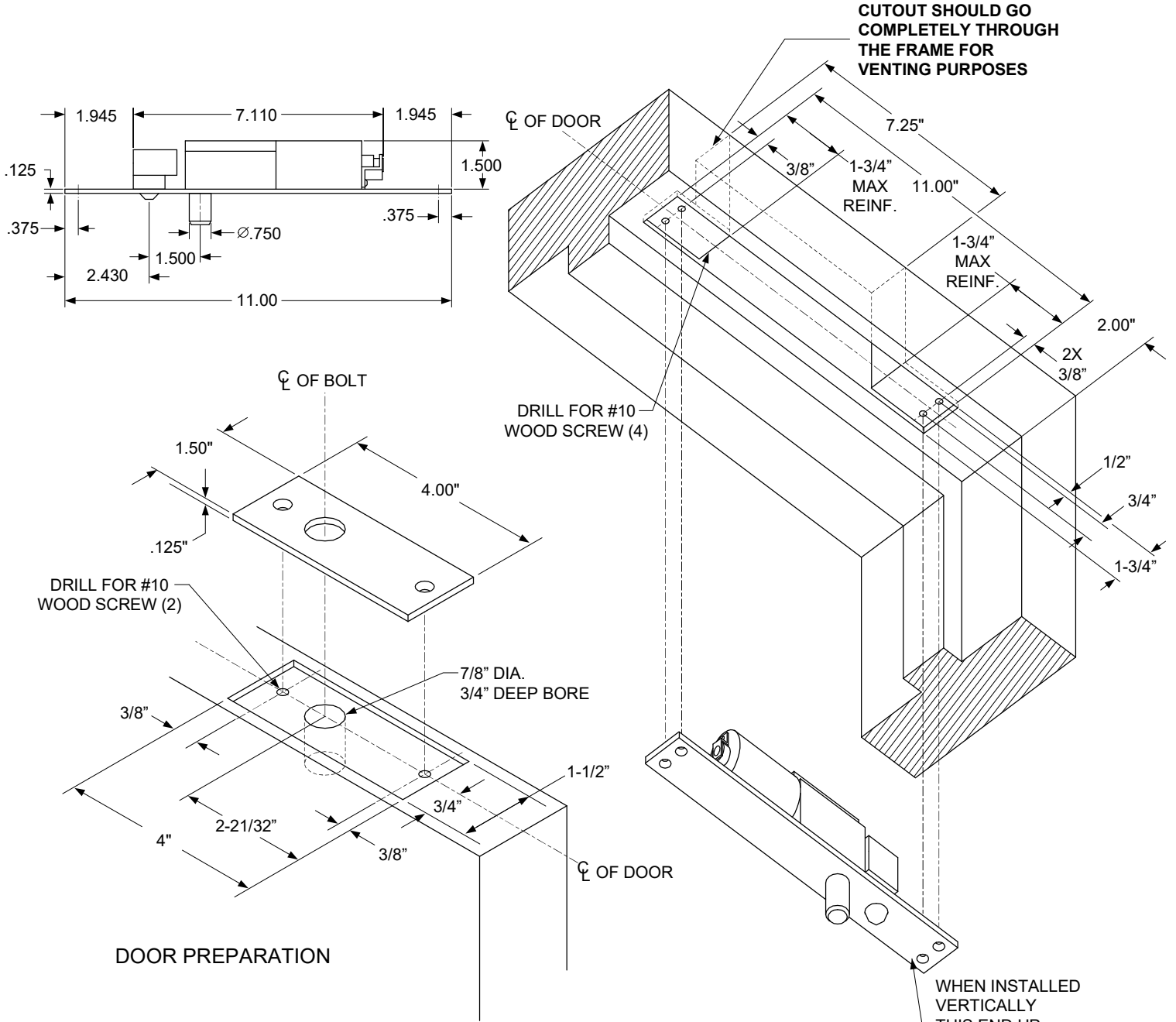




# INSTALLATION INSTRUCTIONS

## 1190AWD WOOD DOOR & FRAME APPLICATION



### TECHNICAL DATA (FOR STANDARD UNIT)

<b>FACE PLATE:</b>	11" x 1-3/4" x 1/8"
<b>STRIKE:</b>	4" x 1-1/2" x 1/8"
<b>BOLT:</b>	3/4" Dia. Solid Stainless Steel
<b>BOLT THROW:</b>	3/4"
<b>PR-1000 MODULE:</b>	3-3/4" x 1-1/4" x 1/2" (Required when mounted in frame.)

**NOTE: TEMPLATE DIMENSIONS ARE SUBJECT TO CHANGE WITHOUT NOTICE.**