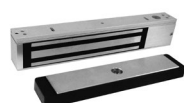


# Value & Specialty Electromagnetic Locks

**E1200****E6200****350****1591****1575****E300**

MODEL		LIST \$
<b>E1200</b>	Value Single Magnetic Lock, 1200lbs, 628, DPS, BAS, LED	<b>298.00</b>
<b>E600</b>	Value Single Magnetic Lock, 600lbs, 628, DPS, BAS, LED	<b>247.00</b>
<b>E6200</b>	Industrial Single Magnetic Lock, 1200lbs, Weatherized, 630, DPS, BAS	<b>487.00</b>
<b>350V</b>	Narrow Single Magnetic Lock, 1200lbs, 628, DPS, BAS, LED	<b>430.00</b>
<b>352V</b>	Narrow Double Magnetic Lock, 1200lbs, 628, DPS, BAS, LED	<b>858.00</b>
<b>1591U</b>	Sliding Door Single Magnetic Lock, 850lbs, 630	<b>408.00</b>
<b>1591UDPS</b>	Sliding Door Single Magnetic Lock, 850lbs, 630, DPS	<b>473.00</b>
<b>1575U</b>	Gate Single Magnetic Lock, 1200lbs, Weatherized, 630, DPS, BAS	<b>498.00</b>
<b>1576U</b>	Gate Single Magnetic Lock, Face-Drilled, 1200lbs, Weatherized, 630, DPS, BAS	<b>498.00</b>
<b>E300</b>	Cabinet Single Magnetic Lock, 300lbs, 628, BAS	<b>195.00</b>

## RELATED PRODUCTS

When you order any SDC products in this section, there are a number of related or complementary products that have proven to work well with your selection.

<b>E12F01*</b>	E1200 Filler Plate, 5/8" x 3/4" x 10 1/2"	<b>25.00</b>
<b>E12F02*</b>	E1200 Filler Plate, 3/4" x 3/4" x 10 1/2"	<b>25.00</b>
<b>E12L*</b>	E1200 Angle Bracket, 1 1/2" x 3/4" x 10 1/2"	<b>30.00</b>
<b>E12Z</b>	E1200 Top Jamb Mounting Kit	<b>99.00</b>
<b>E12U</b>	E1200 Glass Door Mounting Kit, 2 1/2" x 1 1/2" x 8 1/2"	<b>141.00</b>
<b>E1200-DF</b>	E1200 Heavy Duty Drill Fixture	<b>176.00</b>
<b>E6Z</b>	E600 Top Jamb Mounting Kit	<b>99.00</b>
<b>E6U</b>	E600 Glass Door Mounting Kit, 2 1/2" x 1 1/4" x 7 1/4"	<b>141.00</b>
<b>TJ62</b>	E6200 Top Jamb Mounting Kit	<b>141.00</b>
<b>TJ350</b>	350V Top Jamb Mounting Kit	<b>153.00</b>
<b>TJ352</b>	352V Top Jamb Mounting Kit	<b>269.00</b>
<b>HDB350V</b>	350V Glass Door Mounting Kit, 2 1/2" x 1 1/2" x 9 7/8"	<b>200.00</b>
<b>HDB352V</b>	352V Glass Door Mounting Kit, 2 1/2" x 1 1/2" x 9 7/8", Qty 2	<b>420.00</b>
<b>LAB</b>	1591U Sliding Door Angle Bracket, 2" x 2" x 8"	<b>65.00</b>
<b>AMP</b>	1591U Sliding Door Armature Mounting Plate, 1 1/2" x 5/16" x 6 5/16"	<b>53.00</b>
<b>1575-BK</b>	1575 Angle Bracket, 2" x 2 3/8" x 8 1/16"	<b>118.00</b>
<b>1576-AB</b>	1576 Armature Mounting Bracket, 2 3/4" x 3 1/4" x 10 7/8"	<b>94.00</b>
<b>1576-BK</b>	1576 Angle Bracket, 1 3/16" x 2 3/4" x 8 1/16"	<b>94.00</b>
<b>1576-MP</b>	1576 Armature Mounting Plate, 1/4" x 2 1/2" x 8 1/16"	<b>65.00</b>
<b>1576-ZBV**</b>	1576 Z Bracket, 5 1/16" x 3 3/8" x 10 7/8"	<b>186.00</b>

\* May be field cut for use with E600.

\*\* Includes 1576-MP mounting plate.